

Seasonal Timely Tips For . . .

FARMERS and POULTRY MEN



The following items are made available by reliable manufacturers and are needed especially at this time of the year.

Order Your Supply Today!

**FLY SPRAY BARN and CATTLE SPRAY
WEED KILLER DDT SPRAY
LICE POWDER and DISINFECTANTS
POULTRY and STOCK REMEDIES**

Complete Line Of **DELIGHT and LARRO Feeds** Available at all times.

We Are Always in the Market for Grain **FARMINGTON MILLS**

"Millers of Flour and Feed for Over 50 Years"
Phone 0026

Something To Crow About . . .

KASCO GROWING MASH

Striking for the flock, I'd say we prefer Kasco.



Yes, KASCO MASH is something which your chickens will crow about. They give it preference.

Poultry grows **MEATIER, EGGS INCREASE** in size and quantity with KASCO.

It's scientifically mixed - so much protein; so much of each kind of mineral; so much of every nutritious element.



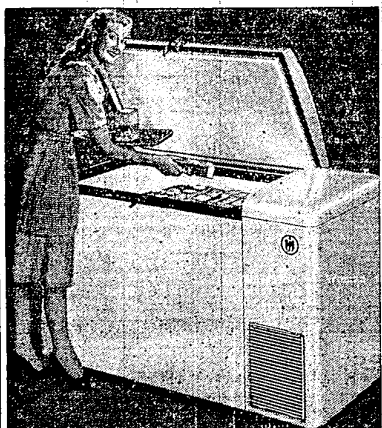
Buy KASCO GROWING MASH Today

FARM SERVICE SUPPLIES

High-Performance Poultry and Livestock Feeds

PHONE 0639
COR. ORCHARD LAKE and 12 MILE ROADS
FARMINGTON, MICHIGAN

Freezes, Stores 385 Pounds of Food



Homemakers with freezers not only enjoy a plentiful reserve of delicious fresh food, but are able to serve many fruits and vegetables out of regular season. An additional advantage is that freezing conserves vitamins and minerals important to the family health. Illustrated, with professional model, is the new International Harvester 11-cubic-foot freezer now on display at Everett Implement Co.

Everett Implement Co.

Grand River at Orchard Lake Road Phone 1516

FARM FEATURES

Farmers Fly to M.S.C. Meet



Michigan farmers established a new link in their contact with Michigan State college on July 8 when over 150 of them landed on the campus in 60 planes for the annual meeting of the Michigan Flying Farmers.

Above are some of the planes on the special landing strip set aside on the college farms. Below, M.S.C. President John A. Hannah (center) welcomes Les Tildesley, Milan, (left) President of the Michigan Flying Farmers, to the campus. Milton Grinnell, editor of the Michigan Farmer, (right), watches.

Fruit Growers Plan Field Day

Fruit growers in Oakland County and adjoining counties have planned a special field day on Thursday, August 7, Karl D. Bailey, County Agricultural agent announced this week.

Bailey stated that the fruit growers will meet at Hi-Point Farms, located on Fisher Road, 2 1/2 miles north and 3 miles west of Romeo at 10:00 a.m. This farm consists of 2,500 acres of which 165 acres are orchard. Allan Rush is the farm manager. A good crop of apples will be seen. Varieties - Jonathan, McIntosh, Cortland, Steele Red, Delicious, and Northern Spy. Sod-mulch system of culture is practiced. Equipment - Cold storage, 25,000 bushel capacity; packing house; 2 catpillar tractors; speed sprayer; Friend sprayer; and brush pusher.

At 11:00 a.m. they will visit the Mountain View Orchards of Leo Barrows located at the west city limits of Romeo. Two hundred and five acres of orchards - apples, peaches, plums, and pears. A large and conveniently arranged sales room will be of interest at this stop. Also Grabhill Grader; Marie Sprayer with 600 gallon tank equipped with 16 nozzle spray gun. Bailey urged fruit growers to bring their families and a basket lunch as a basket picnic dinner is to be held at Romeo Orchards located at the north city limits of Romeo on M-53. Refreshments will also be served.

The 12:00 exhibit will be at Romeo Orchards, managed by Homer Willhobe. It has 250 acres of orchards, including apples, peaches, pears and plums. Equipment - 45,000 bushel capacity cold storage; packing house; and apple juice plant.

Manufacturers, dealers, or distributors are invited to have equipment of interest to fruit growers on exhibit at this stop. Some of the equipment to be seen will be: Myers Air-blast sprayer; speed sprayers; pressure sprayers; dusters. Friend Spray Mast; irrigation equipment; grader for peaches, plums, and pears. Bartlett apple grader for hot-packing of apples. Aluminum picking ladders, and reversible conveyors. A short speaking program will be held in the packing house.

CARE OF COMBINE WILL SAVE GRAIN DURING HARVEST

This year of feed shortages and high grain prices is one in which farmers should be very interested in getting every pound of grain available from their fields during small grain harvest.

County agricultural agent Karl D. Bailey believes that proper attention to the combine will save grain on every acre cut. It is possible to lose from three to four bushels of grain per acre due to faulty adjustment of the combine. All wearing parts should be checked, with special attention to the bearings. Combines require a good job of greasing to avoid costly delays by breakdowns when harvest is in full swing.

Grain losses can be determined by counting the loose grains on the ground before the combine passes a given area and then recounting the grain and heads after the machine has passed. Adjustments can be made in lowering and raising the cutter bar, spacing cylinders to concaves, amount and direction of air blast, setting of shoe sleeves, the forward speed of the combine and suitable cylinder and rack speed for the particular grain combined. The rack losses, on the average, far exceed other combine losses. Experimentation will prove the best adjustments to be made.

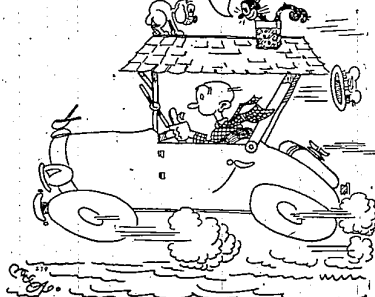
A checkup should be made two or three times daily and each time the machine is moved to a different field or to harvest a different grain. Much grain can be saved by combining the back swath or path of the combine and tractor on the opening round of the field.

Shower Costs Money
On the average, a man's daily shower takes \$7.50 worth of water a year, while a tub bath uses up only \$3 worth.

CAP SMITH

Auctioneer and Appraiser
SECURE YOUR DATES FOR SPRING AUCTIONS
All Farm Sales Conducted On A 3 Per Cent Basis
Res. New Hudson
Phone South Lyon 4365

IT'S JUST A LITTLE MISTAKE - WHEN THE TOP BURNED OFF THE BOSS LOOKED IN THE YELLOW PAGES OF THE TELEPHONE DIRECTORY FOR A ROOFER



Owner-Sampler Testing Begun

A new type of test for dairy cows will be started in southwestern Oakland County beginning the twenty-first of July.

A new program known as the owner-sampler testing is being operated as a cooperative project of farmers in Wilcox, Walled Lake, South Lyon and Farmington area. Leaders in the project are George Campbell of Walled Lake; John Hettrick, Walled Lake; John Bachus, Darold Heldt and Donald Reed, all of South Lyon.

Mr. Glen Robinson of Novi will do testing work which consists of picking up samples of milk from each cow in the herds of farmers enrolled in the project.

Further information can be obtained by contacting E. W. Alchin, Assistant County Agricultural Agent in Pontiac or Glen Robinson, Association tester of Novi.

Cover Crop Can Be Seeded In Corn

A wet year, such as 1947 has been so far, is a good year for sowing a cover crop when corn is sown later for the last time. B. H. Churchill, specialist in farm crops at Michigan State college, says that either domestic rye grass or sweet

clover is good for this purpose. Domestic rye grass produces an excellent cover crop for over winter when sown in corn and can be plowed under the following spring as a green manure crop. It is not suitable for pasture use. It should be sowed at the rate of approximately 10 pounds to the acre.

Sweet clover does not thrive as well when sowed with corn as does domestic rye grass, but if a good stand is obtained it can be pastured the following summer or plowed under as a green manure crop. Ten pounds to the acre is the rate for seeding sweet clover. Mixtures of rye grass and sweet clover sometimes produces good stands.

Churchill points out that the use of these cover crops is particularly important on slopes where erosion is a factor and in fields where green manure is needed.

Announcing Artificial Breeding Of Dairy Cattle

DR. H. R. HOUGHTON
20991 Gill Road Farm, 0569-J3

State Farm Insurance Co's.

AUTOMOBILE - LIFE - FIRE
RESIDENCE - PERSONAL & FARM LIABILITY

Michigan Farm Bureau, State Agent

Maurice Brown

LOCAL AGENT

33636 Grand River Avenue



CY and MARTY'S SERVICE

COMPLETE AUTO REPAIR

ALL WORK GUARANTEED TERMS IF DESIRED

FARMINGTON and GRAND RIVER CUT-OFF
Phone 1980

FOR TAXI SERVICE



PHONE 2270

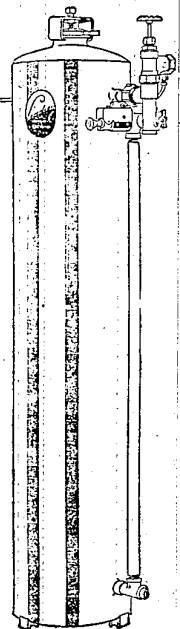
24 HOUR SERVICE

Calls Taken in Advance

FARMINGTON CITY CAB COMPANY

S. FARMINGTON RD. and GRAND RIVER
Across from the Farmington State Bank

Lindsay SEMI-AUTOMATIC WATER SOFTENER



PAY ONLY **\$4.00** PER MONTH NO DOWN PAYMENT INCLUDING INSTALLATION

End Your Hard Water Problems Today

100% SOFT WATER THE LINDSAY WAY IS YOUR BEST BUY

On Display at Dickersons Hardware

IMMEDIATE INSTALLATION AND DELIVERY

BUY OR RENT

KREASON Softener Service

29435 Greening Farmington 0592-R1



A Lady Likes to Be Treated Right

Ask any little girl who has exchanged burned-out lamp bulbs at an Edison office. She'll tell you she was treated like a debutante shopping for sables. For, although Detroit Edison supplies eight million new lamp bulbs to its customers annually, the Edison clerk never seems too busy to give her a smile and a cheery greeting. Next time you need lamp bulbs, take your burned-out ones, along with a recent electric bill for easy identification, to your nearest Edison office. You'll find that the clerk is genuinely concerned with your needs and viewpoints. And you'll find a willingness to go out of the way to help a customer, whether it be a little girl or a great-grandmother.

THE DETROIT EDISON COMPANY