

SALE... our Beverlee hosiery is sheer value

Fashioned by a famous maker of our own stretch nylon yarn. Tell height, weight when ordering.

11A. One size stretch sheer-to-the-waist pantyhose.

11B. One size stretch reinforced panty pantyhose.

Both fit most women 5' to 5'10", up to 170 lbs. In tan, taupe, beige, brown, navy. Hosiery Dept. (d. 911)

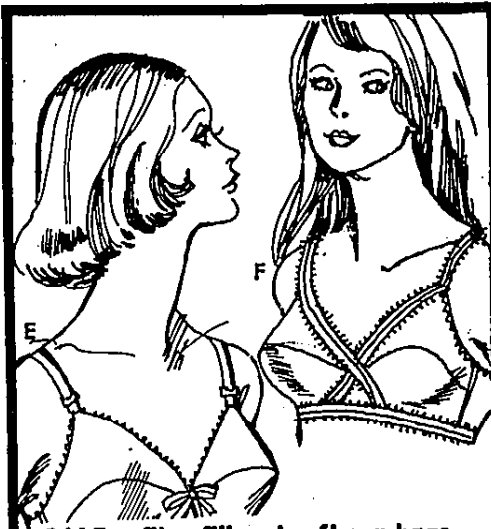
11C. Extra size pantyhose in
tan, taupe, beige, 1X, 2X, 3X fit
women up to 6'2" and
285 lbs. Hosiery. (d. 911)

1.59

11D. One size stretch stock-
ing fits sizes 9-11 up to 5'10".
Tan, taupe, beige, brown.
Hosiery Dept. (d. 911)

79¢

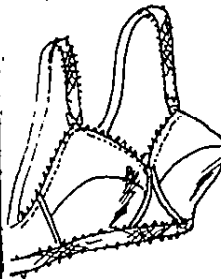
99¢



SALE... fiberfill and soft cup bras
from Precious Form for so little

2 for 3.97

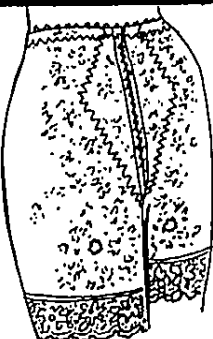
11E. Plunge bra with fiberfill cups is smooth
and shapely. A 32-36, B 32-38. **11F. Cross-**
over style bra for comfortable uplift. Soft
cups B 32-40, C 34-40. Fiberfill cups A 32-
36, B 32-40. White. Foundations. (d. 935)



2 for 3.97

SALE, famous bra

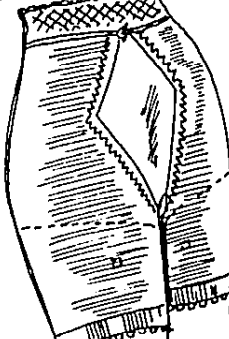
11G. Fiberfill A 32-36,
B 32-38, C 32-38. Soft
cup A 32-36, B 32-38,
C 32-36. White in
Foundations. (d. 935)



3.97

SALE... panty

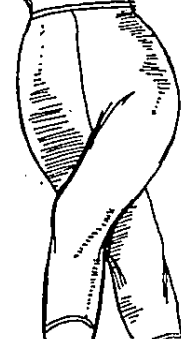
11H. Sil-O-Ette® nylon
lace, reinforced front
panel. White and col-
ors. S to XL. (d. 935)



2 for \$7

SALE... panty

11J. Extra size back
support panty. Front
control panels. 32-40
even. White. (d. 935)



2 for \$5

Sale, pants liner

11K. Bestform® in two
sizes. White, fashion
colors. Shapes you
naturally. (d. 935)

Hudson's Budget Stores

Hudson's Budget Stores are open Sundays for your shopping convenience from noon to 5 p.m., excepting Downtown Detroit