

# FARM FEATURES

**BREADY GARDEN TRACTOR**

**TILLS MULCHES CULTIVATES**

Increases Crop Yield 15% to 40%

Model G-16 Garden Tiller Cuts 16" Swath

**SAVES YOU TIME AND MONEY ALL YEAR 'ROUND**

The powerful, easy-to-operate Bready Garden Tractor means more work and money every month of the year. All purpose implements attached in a jiffy. See and operate the Bready now!

Come in for a Demonstration of this handy, all purpose GARDEN TRACTOR it's just what you have been looking for!

**Available Now**

Reconditions your soil, prevents erosion, increases your crop yield! M-E Garden Tiller has been tried and proven from coast to coast, is famous for rugged construction.

**ROTARY GARDEN TILLERS**

**BIG STAGE SHOW! DEALER'S FAMILY PARTY**

Don't Miss It!

**FRIDAY, MARCH 19**  
8:00 p.m.

- REAL LIVE ENTERTAINERS
- NEW COLOR MOVIES
- OTHER FEATURES

FARMINGTON HIGH SCHOOL AUDITORIUM

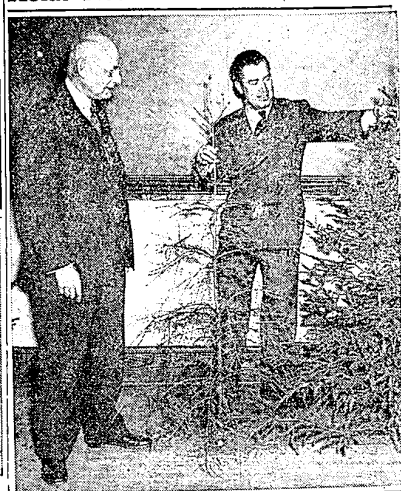
EVERYTHING FREE

**EVERETT IMPLEMENT CO.**

"YOUR INTERNATIONAL HARVESTER DEALER"

Grand River at Orchard Lake Rd. Phone 1515

## Holdes Needles on Christmas Trees



A newly developed plastic spray which holds needles on Christmas trees longer has been discovered and tested by Michigan State College research scientists. Dr. C. L. Hamner, right, shows W. R. Gardner, director of the MSC Agricultural Experiment Station, both sprayed and unsprayed trees. Both had been left in a room at 80 degree temperatures for a 15 day period. The tree on the right was sprayed with Goodrich Genon latex. The fine waterproof film prevented evaporation and left the tree forest-fresh after 15 days. Two other MSC horticulturists, Jack Gartner and F. L. O'Rourke worked with Hamner on the test. The product is now being produced commercially and will probably be on the market in time for use next Christmas.

## TOP QUALITY WOOL NEEDS CARE AT SHEARING TIME

It takes a year to produce a crop of wool but its value is often lowered by careless handling at shearing time, advises Graydon Blank, animal husbandry specialist at Michigan State college.

Much of the shearing in the state is done by custom workmen who do a fast neat job, but the damage to the wool often comes when chaff, dirty wool, or wet wool is left in the fleeces. Chaff can be kept out by providing the shearer with a clean floor on which to work. Dirty, wet, and stained wool should be kept separate so it will not damage the clean parts of the fleeces.

Wool should always be tied with paper twine, never with binder twine. Loosely tied fleeces are less likely to spoil if the wool should be damp.

on hand to assist the shearers in catching the sheep and to take care of the wool after it is removed. Most shearers are skillful workmen and take a great deal of pride in their work. However, flock owners should make sure that no more second cuts than necessary are made in the fleeces and that the sheep are not nicked excessively with the shearing knives.

Shearing time also gives the flock owner a chance to check the condition of his flock. Sheep in poor condition will be very evident. Ticks and lice can be seen easily, if present. It's also a good time to check the body conformation of the ram and to make plans to replace those lacking depth, thickness and natural fleshing.

Michigan State college poultry specialists say that eggs should be held at high relative humidity to prevent evaporation of water from the egg. Good apple holding conditions store eggs well. Eggs pick up flavors rapidly.

**FOR TAXI SERVICE**

**PHONE 2270**

24 HOUR SERVICE

Calls Taken in Advance

John Q. Young

**FARMINGTON CITY CAB COMPANY**

S. FARMINGTON RD. and GRAND RIVER

Across from the Farmington State Bank

**This is the Best Larro "CHICK BUILDER" We've Ever Sold**

**Larro "CHICK BUILDER"**

**"Farm-tested"**

REG. U. S. PAT. OFF.

**—Now Better Than Ever!**

General Mills has found new ways to get still more nutritional value from certain vital feed ingredients. It's been shown by years of actual feeding tests at Larro Research Farm that the Larro "Chick Builder" we're selling today and the Larro Pullet Plan give a greater opportunity than ever to build profitable layers. • Don't wait. Be guided by leaders in the science of feeding. Get Larro "Farm-tested" Chick Builder now.

**FARMINGTON MILLS**

"Mills of Flour and Feed for Over 50 Years"

Phone 0026

**So Nice to Come Home To**

It's spic and span! Neat as a pin! Attractive! Inside and outside, the magic of Pontiac Protective Coatings in their smart colors have created a glamorous home... one it's truly nice to come home to.

**USE PONTIAC PROTECTIVE COATINGS**

See Our Outstanding Stock of **HARDWARE SUPPLIES**

**FARM SERVICE SUPPLIES**

High-Performance Poultry and Livestock Feeds

Phone Farmington 0639 or L'ongacre 5-3262

COR. ORCHARD LAKE and 12 MILE ROADS FARMINGTON, MICHIGAN

## Lack of Space May Cause Chick Picking

Cannibalism in chicks is hard to stop once it gets started. Keep chicks busy at the feeders and water fountains, is the advice of Howard Zindel, extension poultryman at Michigan State college. Don't let the life chicks start something that will affect the entire brood.

If cannibalism should start, affected parts should be treated with pine tar or commercial preparations made for the purpose. Reduce the light in the houses; if possible exclude all light by shading the windows and use a red light if the house is wired for electricity.

Salt added to the drinking water at the rate of one tablespoonful per gallon of water for half-day periods on three successive days may prove beneficial. If the first treatment is not successful, repeat after three days.

## OAKLAND COUNTY TO HAVE GRASS DAY PROGRAM

A series of Grass Days for the state of Michigan have been planned for the month of June. Locations have been selected in 12 different sections of the state for the field days which will be sponsored by the Michigan State college extension service.

A Grass Day program was held last year in Mason county and attracted farmers from a wide area. This year's program will emphasize many of the successful features of that session. Information on planting, managing and harvesting the grass and legume crops will be stressed. Demonstrations of machinery and handling methods will emphasize ways of producing high quality hay.

Local committees will assist county agricultural agents and extension specialists in making arrangements for the events.

Upper peninsula Grass Days will be under the supervision of J. G. Welles Jr., district Extension Service supervisor in the upper peninsula.

Dates and locations of the Grass Days are as follows:

- Wednesday, June 9, Lenawee
- Friday, June 11, Oakland, Monday, June 14, Van Buren, Wednesday, June 16, Muskegon, Friday, June 18, Ionia; Monday, June 21, Tuscola and Baraga; Wednesday, June 23, Osceola and Menominee; Friday, June 25, Grand Traverse and Chippewa; Monday, June 28, Alcona.

Michigan State college agricultural engineers warn that corn moisture should be checked this spring if it's more than 20 per cent during the winter months, and the corn is stored in a poorly ventilated crib eight feet wide or wider, spoilage is very likely to occur in the spring when weather gets warmer.

CLASSIFIEDS MUST BE GOOD — SO MANY PEOPLE USE THEM

**Cap Smith & Son AUCTIONEERS**

New Hudson, Mich. Phone 4365 or 4649 S. LYON

**KAUFMANN ALUMINUM COMBINATION STORM WINDOWS**

The finest complete line of storm window combinations in the world! No down payment—2 years to pay! CALL FOR FREE ESTIMATE! Authorized Sales Consultant.

**WINFIELD B. BROWN**

Phone 0143-M, Farmington 24276 Middlebelt

**GLASS BLOCKS**

All Sizes

- Auto Glass
- Mantle Mirrors
- Window and Plate Glass

**DETROIT ART GLASS STUDIO**

PHONE KE. 2-4150

27102 GRAND RIVER (JUST EAST OF 8 MILE ROAD)

**I'm REDDY KILOWATT**

Your Electric Servant

You've never seen me before because I've always stayed inside the REDDY-BOX—your electric outlet. Now I'm stepping out so that we can get better acquainted.

I'm the symbol of good electric service... your servant that runs everything electrical.

I'm not like anyone you've ever seen before. My body is made of lightning flashes—my nose a light bulb—my ears are outlets—and those two things sticking out of my head are wisps of curly hair. I move silently in my rubber shoes. I move swiftly too, at the speed of 186 thousand miles per second... I'm the fastest thing on earth.

I'm your economical and willing servant who works long hours at low wages. Whenever you want me I'll be waiting in your nearest REDDYBOX—electric outlet. Remember, just... "PLUG IN, I'M REDDY!"

**The DETROIT EDISON Co.**