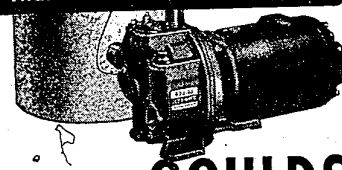
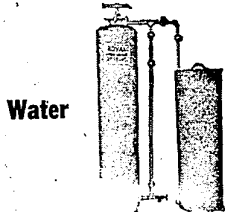


**FOR TAXI  
SERVICE****PHONE 2270**  
24 HOUR SERVICE  
Calls Taken in Advance

John Q. Young

**FARMINGTON CITY CAB  
COMPANY**S. FARMINGTON RD. and GRAND RIVER  
Across from the Farmington State Bank**4-LB. FRYERS IN 8 WEEKS**have been easily produced by many  
—have been feeding Larro Green Pel-  
let growers feeding Larro Green Pel-  
lets for Rabbits! When the young come  
out of the nest box and take solid food,  
their growth on Larro can be amaz-  
ingly rapid and uniform. See us today!**FARMINGTON MILLS**"Mills of Flour and Feed for Over 50 Years"  
Phone 0026**Larro GREEN PELLETS**  
Farm-tested for RABBITS**The IDEAL Water System  
That Will Fill Your Exact Needs****THE NEW GOULDS  
JET-O-MATIC**When you buy a water system you  
want one that will take care of your  
full requirements through many years  
of trouble-free service. That's why we  
recommend the new Goulds Jet-O-  
Matic. With its wide range of capaci-  
ties, it will give you just what you  
want. And long life and complete de-  
pendability are assured by Goulds,  
whose pumping equipment bears a  
trusted name throughout the world.**Dual Service**  
Same unit for shallow  
or deep well operation  
• FULLY AUTOMATIC  
• EASILY INSTALLED  
• ONE MOVING PART  
• NO UPKIP  
• NO ATTENTION REQUIRED  
• CAN'T LOSE PRIME  
• AMAZINGLY QUIET**COME IN AND LET US TELL YOU MORE ABOUT IT**  
**EVERETT IMPLEMENT CO.**  
"YOUR INTERNATIONAL HARVESTER DEALER"  
Grand River at Orchard Lake Rd. Phone 1515**You Can't Afford  
To Be Without A ROYAL . . .****Water****Conditioner**Save money - save time and trouble by  
having soft water all the time. Why  
waste soap - expensive softener chemi-  
cals - and fuel when you can have this  
home luxury within reach of all?

SOLD ON CONVENIENT MONTHLY PAYMENTS

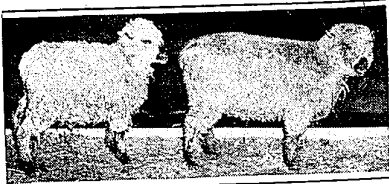
**• SALT •****\$1.25 per 100**

- WATER SOFTENER SALT
- MEDIUM SALT for Livestock
- ROCK SALT

**• HORSE MEAT •  
FOR YOUR PETS**2 lb. package ..... 35c  
4 lb. package ..... 70c**FARM SERVICE SUPPLIES**High-Performance Poultry and Livestock Feed  
Phone Farmington 0639 or Longacre 5-3262  
COR. ORCHARD LAKE and 12 MILE ROADS  
FARMINGTON, MICHIGAN

# FARM FEATURES

## Lamb Parasites Easily Checked

Importance of proper treatment  
of lambs for internal parasites is  
shown by these two lambs born the  
same day and given identical feed  
for a nine month period. Tests  
were conducted by research men at  
the agricultural experiment station at  
Michigan State college, East  
Lansing. The larger lamb, which  
attained a weight of more than 90  
pounds, was given free access to  
a lamb which phenothiazine was  
added. One pound of phenothiazinewas mixed with 14 pounds of  
salt and placed in a covered feeder.  
The smaller animal reached a  
weight of 40 pounds but got only  
known worm infected pastures and  
sheds. Internal parasite troubles  
caused many farmers to liquidate  
farm flocks. The simple self-worming  
process found recently through  
agricultural experiment station re-  
search has caused many to resume  
sheep rearing programs.

## HINTS OFFERED ON CONTROL OF BROWN ROT

Brown rot on Michigan fruit crops  
has been on the increase in recent  
years and has resulted in some serious losses.A. E. Mitchell, fruit specialist at  
Michigan State college, points  
out that the two critical periods of  
infection are during the spring in  
the tree as cankers on twigs and  
during the harvest period as fruit  
rot.Brown rot of peaches over-winters  
in the form of brown rot mummies  
found on the ground or hanging  
in the tree as cankers on twigs and  
fruit spurs. The mummies  
produce brown rot spores at blossom  
time and therefore should be  
removed from the tree when pruning  
during the dormant season.  
Cankers are less likely to produce  
spores, depending on their environment.Pruning should be done in such a  
way that all seasonal sprouts are  
easy to control. Brown rot may be  
applied. Much dead and diseased  
wood is removed when pruning and  
brown rot cankers on limbs are re-  
moved automatically by such prac-  
tices. If dropped peaches are picked  
up and removed from the orchard  
at picking time, much is gained in  
brown rot control.Mitchell recommends spraying in  
the spring with liquid lime sulphur,  
two gallons to 100 gallons. This  
mixture should be applied just be-  
fore full bloom when 90 per cent  
of the blossoms are in the advanced  
pink stage. If rainy weather pre-  
vents during the pre-bloom period,  
and brown rot was bad the previous  
season, it may be desirable to apply  
a liquid lime sulphur earlier in the  
pink period. Sprays must be dust-  
free. As all blossoms are not open  
at the same time, one application  
may be put on when 25 per cent  
of the blossoms are open and a second  
application when 75 per cent of the  
blossoms have opened.

## Sow Winners Used Good Practices

Winners in the 1937 sow testing  
project, sponsored by the Michi-  
gan State college animal husbandry  
extension service, followed sound  
and approved production practices,  
says Harry Moxley, MSC swine  
extension specialist.Top record in the contest was  
that of the Jackson Farm, Center-  
ville, Michigan, with a litter of 13  
cross-bred pigs that weighed 544  
and one-half pounds at 56 days of  
age.Moxley points out that records  
such as this are achieved because  
of prolific breeding stock, saving  
large litters, and good feeding prac-  
tices. Successful swine raisers  
were also careful to keep pigs  
thrifty and healthy.

## WE'RE READY . . .

to service your car for  
spring. Drive in today for  
friendly, dependable service.  
We are trained and equipped  
to give your car new life —  
to give you prompt, courte-  
ous service.Bring Your Car  
To CATLETT'S Today!**24 HOUR AAA TOWING SERVICE**

For Night Calls Phone 1359

**Catlett Hi-Speed Service**

Grand River at Grace

Phone 9022

## POULTRY TESTING SHOWS RESULTS IN PAST YEAR

Great strides have been made  
in disease eradication and improv-  
ment of Michigan poultry. C. G.  
Card, head of the Michigan State  
college poultry department, reports.The National Poultry Improve-  
ment Plan and the National Fur-  
ing to stamp out disease, are jointly  
sponsored by the Michigan State  
Poultry Improvement Association,  
the MSC poultry department and the  
U. S. Department of Agriculture.The results of the past few years'  
testing, retesting, and check test-  
ing have improved the livability of  
chicks and poulters produced last  
year to a very high level. Livability  
tests are based on cards sent  
out with each sale of chicks and  
poulters by the hatchery. At the  
end of 14 days, the farmer returns  
this livability card to the Michigan  
State Poultry Improvement asso-  
ciation office where results are tabu-  
lated.In 1947 cards were received which  
accounted for 731,446 chicks and  
poulters. The mortality percentage  
was 2.5 per cent on the birds and  
the livability percentage 96.5.  
Other significant steps in themovement to provide good chicks  
and poulters is the fact that 643,000  
chicks in 2,500 flocks were blood  
tested and leg banded. In addi-  
tion, 70,650 turkeys in 225 flocks  
were tested and leg banded.Fifty-five per cent of the total  
hatcheries in Michigan, represent-  
ing over 60 per cent of the total  
capacity, are now cooperating with  
the Michigan State Poultry Im-  
provement association.Lists of hatcheries cooperating  
can be secured from county agri-  
cultural agents, agricultural teach-  
ers, FHA and 4-H leaders or by  
writing to the Michigan State Poul-  
try Improvement Association, East  
Lansing.When the temperature in a brood-  
er house gets uncomfortably cold,  
chicks crowd against the "mother".  
Their instinct is to get under some-  
thing — they pile up and as a re-  
sult many chicks are smothered.**CLASSIFIEDS MUST BE GOOD —  
SO MANY PEOPLE USE THEM****Cap Smith & Son  
AUCTIONEERS**  
New Hudson, Mich.  
PHONE 4365 or 4649 S. LYON

## FARMERS: CUT FEED COSTS!

Buy Quality Feeds Now  
at FUSTON'SWe Have  
an 18% Protein EGG MASH made by KASCO  
priced special at \$5.52Backed by **RESEARCH • PROVED** by Use **KASCO****BABY CHICKS****Started Chicks****2 Weeks  
Old**

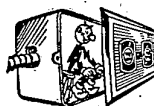
We are ready to take care of your needs

• Feeds •

<b>KASCO</b>	<b>CONKEYS</b>
EGG MASH	SCRATCH FEED
100 lb. bag \$5.85	100 lb. bag \$5.40
SWEET HORSE FEED	SWEET 20% DAIRY FEED
100 lb. bag \$5.85	100 lb. bag \$5.40

Greater Savings on Large Quantities  
**GARDEN-AID Tractors**  
Now on Display  
We Deliver**FUSTON FEED COMPANY**  
33314 W. Seven Mile Rd.  
AT FARMINGTON ROAD Phone 0671

## REDDY, AT YOUR FINGERTIPS!

I'll work for you the whole day through  
Toast your toast; cook, roast, or stew  
Wash your clothes; and press them, too.  
I'll beat, I'll clean; make ice for you.  
I'll help in factories, stores and schools  
And help the youngsters learn the rules  
For farmers I've got lots of tricks  
Like milking cows or hatching chicks.  
And, Boss, I bet you're glad to know  
I work long hours for wages low  
So call me early; keep me late  
In my REDDYBOX home I'll always wait.**Reddy Kilowatt**  
YOUR ELECTRIC BOSS**The DETROIT EDISON Co.**