

COME AND GET IT!



You Can Now Enjoy Picnics Right In Your Own Back Yard

For More Pleasurable Outdoor Hours During The Warm Summer Days Get a PENTWATER

PICNI-KOOK

The Ideal Grill for Outdoor Cooking

— at —

Farmington Lumber & Coal Co.

"EVERYTHING FOR THE BUILDER"

32800 Grand River

Phone 0020

To Keep YOUR Farm Equipment

Working!

GENUINE IH PARTS ARE A GOOD INVESTMENT



The small amount you spend now in extra replacement parts for your farm machines can pay off 10-to-1 at harvest time.

Don't take a chance on delays in the field or crop losses because your equipment is broken down.

Remember: Genuine IH Parts are made with the same precision and accuracy as those used on new machines.

So come in soon and get the Genuine IH parts you may need in case of an emergency.

EVERETT IMPLEMENT CO.

Grand River at Orchard Lake Rd.

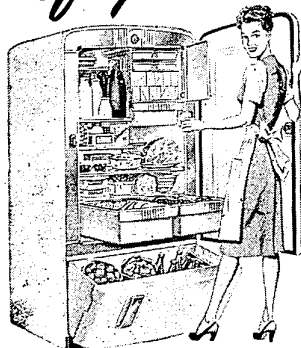
Phone 1515

INTERNATIONAL HARVESTER FARM EQUIPMENT HEADQUARTER'S

The news you've been waiting for...

INTERNATIONAL HARVESTER

Refrigerators ARE HERE!



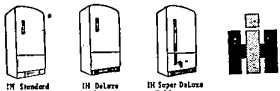
Room to spare... with spare room in your kitchen!

Good news for busy homemakers with the "mealtime blues" is the arrival of the refrigerator that makes it easy to store enough food for many taste-tempting meals.

These brand new, eight-cubic-foot International Harvester Super DeLuxe Refrigerators are more than roomy inside. More than 16 square feet of shelf area. "Stowaway" freezer locker stores up to 35 pounds of delicious frozen foods. "Ergidrawer" stores 13½ pounds of tender, juicy meat.

Two Crispers store over 3 pecks of dewy-fresh vegetables and fruits, and a Super-Storage Pantry-Bin stores food you don't refrigerate.

Come in today. Learn more about the safest, soundest investment in "shopping-storing-serving" freedom!



LICENSED ELECTRICIAN

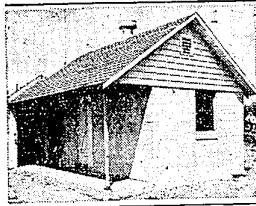
BRILL ELECTRIC CO.

32733 Grand River

Phone 1550

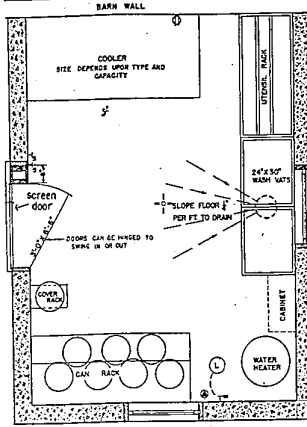
FARM FEATURES

MODERN MILKHOUSE AIDS DAIRIES



The modern milkhouse shown here has been designed by James Boyd, agricultural engineer at the Michigan Agricultural Experiment Station. It has numerous features that make it an efficient work-center. These include: a ventilation system that halves moisture condensation and takes out odors; a sheltered porch; a removable casing on the door that will permit large equipment to be moved in and out; and adequate space for all milk cooling operations.

Single copies of plans for this milkhouse are available free by writing to the Farm Building Plan Service, Department of Agricultural Engineering, Michigan State College, East Lansing, Michigan. In quantity, a charge of ten cents per plan is made. Plans for a vestibule type milkhouse are also available.



Flying Farmers Hold Annual Meeting At MSC

A hayfield on the Michigan State College campus will serve as an airport this week when the Michigan Flying Farmers "drop in" at East Lansing for their second annual meeting.

Highlights of the day will include demonstrations of planes and farm machinery and a program and business meeting in the afternoon. An attendance of approximately 150 people is expected for the affair.

We want to remind you car drivers once again to take it easy and have an enjoyable summer free of accident. Drive at speeds that are NOT too fast for conditions. Make SURE you can stop in case of an emergency. The National Safety Council points out that it's up to you to protect yourself against the other driver who isn't smart enough to take it easy.

GRASS DAYS DRAW LARGE NUMBERS OF MICHIGAN FARMERS

Between 25,000 and 30,000 Michigan farmers saw demonstrations during June which emphasized the need for more and better grass and legumes. Sponsored by the Michigan Cooperative Extension Service, the 12 demonstration days in different parts of the state attracted large crowds despite rainy and unfavorable haying weather.

Demonstrations in the use of fertilizer, proper seeding, pasture renovation, weed control, gully erosion control, contouring, and the use of modern haying equipment were featured.

Other agencies, including the Soil Conservation Service, assisted local committees in planning the field days. Local farmer committees worked with county agricultural agents in the many areas.

Extension Service officials at Michigan State College are considering plans now to continue the Grass Day Demonstrations next year. Great interest shown by farmers in growing and utilizing higher quality forage for livestock proved the need for continued emphasis on grassland farming, MSC officials believe.

Parasite Control Needed In Summer

Many lambs that go to pasture as good prospects for early marketing end up as inferior, unprofitable or dead lambs because of poor summer management, warns R. H. Nelson, sheep specialist at Michigan State College.

Very little time is needed to keep the lambs thrifty and profitable. Nelson recommends that farmers treat for worms. These parasites cause slower gain, higher feed costs, and frequent deaths of lambs. The simplest and most effective means of control is to keep a mixture of phenothiazine and salt before the flock at all times. It should be mixed at the rate of one pound of phenothiazine with each 12 to 14 pounds of salt. Protect the mixture from the sun and rain by feeding it in a covered salt box.

Caution Urged In Garden DDT Use

Careless use of DDT around the yard can cause injury to some shrubs and plants, cautions Ray L. James, extension entomologist at Michigan State College.

Some of the plants which may be injured include delphinium, bleeding heart and azalea. DDT causes the leaves to drop on privet and it may take some time for these plants to regain their foliage. Repeated treatments of DDT may kill privet, James warns.

For treating shrubbery and lawns to control flies and mosquitoes, one form that can be used is the 50 per cent wettable suitable for use with water. Use four pounds of 50 per cent wettable DDT in 100 gallons of water. This amounts to four level tablespoonsful to one gallon.

Various types of machinery such as knapsack sprayers, barrel pumps, or power equipment can be used to apply the DDT. In the case of power equipment, care should be taken to reduce the pressure especially on tender plants. Knapsack sprayers should be kept well agitated.

A five per cent DDT dust can also be used successfully on grass and shrubbery with the same reservations in its use as for the 50 per cent wettable DDT. Drifting is a disadvantage of dust.

James has another word of caution about DDT. It is poisonous to gold fish, fish in ponds, frogs and cats. Avoid accidental spraying of cats. Special instructions are available on the use of DDT for control of mosquito larvae (wrigglers) infesting ponds.

Never leave a campfire until it is completely out. Michigan State College foresters advise putting the fire out by stirring the coals while soaking them with water. Then wet the ground around the fire. If you can't get water, stir in moist earth and treat it down until it is packed tight over and around the fire.

QUICK ACTION SAVES PROFITS

Yes—when cecal coccidiosis strikes, prompt action is necessary. To prevent spread of this deadly disease, keep Dr. Solisbury's REN-O-SAL on hand. At first sign of cecal coccidiosis, mix 8 tablets of REN-O-SAL in each gallon of water. Birds drink and receive medication. Don't miss this effective, economical, easy-to-use treatment. Ask for REN-O-SAL.



NEED DDT? GET THE BEST

When you buy DDT, you should get the best. And there's none better than Dr. Solisbury's DDT products! There's a form for every use—100% DDT Dusting Powder for small-scale use; 20 DDT Emulsifiable, a liquid product, for mass spraying; and 50% DDT Wettable for all-around economy. Dr. Solisbury's DDT products are efficient and economical—choose the form you need.



BUY NAMES YOU KNOW AT A MILL YOU KNOW

POULTRY AND STOCK REMEDIES

GRAIN AND SEEDS

FEEDS — ● DELIGHT

● FULL-O-PEP

LARRO

● MASTER-MIX

FARMINGTON MILLS

"Mills of Flour and Feed for Over 50 Years"

Phone 0026

Corn treated with DDT should not be fed to livestock, warn Michigan State college entomologists. DDT is secreted in milk and stored in fat tissues of animals.

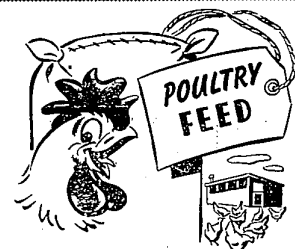
Sell It with an Enterprise Classified

Cap Smith & Son

AUCTIONEERS

New Hudson, Mich.

PHONE 4365 or 4649 S. LYON



Worth Crowing About That's KASCO!

BACKED BY RESEARCH PROVED BY USE!

For More Profits For A Healthy Flock

Buy Kasco GRO-MASH

Its perfectly balanced formula, its valuable growing qualities, make Kasco GRO-MASH tops with many successful poultrymen.

BUY IT TODAY for PROFITS TOMORROW

FARM SERVICE SUPPLIES

High-Performance Poultry and Livestock Feeds

Phone Farmington 0639 or Longacre 5-3262

COR. ORCHARD LAKE and 12 MILE ROADS

FARMINGTON, MICHIGAN



It's Vacation Time...

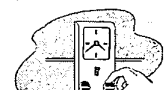
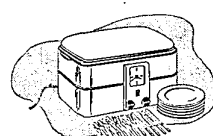
CARRY YOUR KITCHEN WITH YOU!

An Electric Roaster Oven Cooks Everything... Plugs In Anywhere

Wonderful in town... perfect in country! with you anywhere—it will broil, roast, grill or fry to perfection wherever there's A-C current. You'll find portable electric roaster-ovens in your favorite appliance store now—see your dealer today!

ROUGH IT... IN STYLE!

Practical, versatile, foolproof, these family-size roaster-ovens come equipped with accurate thermostats and automatic timers. Ideal for touring!



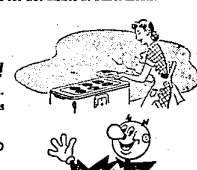
USE IT ALL YEAR ROUND!

Summer or winter, it's perfect for keeping food warm. Use one for backyard picnics—as an auxiliary oven in the kitchen—or for hot dishes at buffet meals.

LIKE HAVING A PART-TIME COOK!

Weighing only about 20 pounds, constructed of durable steel, aluminum and enamel, your roaster is easily carried, easily cleaned. Priced from \$36.95.

SEE THEM AT YOUR NEIGHBORHOOD EDISON OFFICE



The DETROIT EDISON CO.