



## Cooperatives Listed

# It's Time To Pick A Nursery

If you're thinking of enrolling that small member of the family in cooperative nursery next fall, it's not too soon to act.

Nurseries are right now compiling lists of children likely to be attending when summer's over and the big brothers and sisters head for school.

As a means of bringing together parents and nurseries, the Observer Newspapers again is printing a list of all such organizations in this area.

Cooperative nursery leaders all urge parents of prospective enrollees to be sure this kind of nursery is the best for both children and

Cooperatives provide a twice - or three - times - a - week school experience. Many parents prefer this for small children.

They are lower in cost than other nursery schools and day care centers because mothers help the trained teachers carry out the program.

Mothers - and occasionally fathers too - have a chance to share in the program. They are on hand two or three times a month to assist, and thus they can get a better idea of their children's behavior and have the opportunity to do something special with one child in the family.

Most cooperative nursery schools also require attendance at a monthly meeting when the business of the school is transacted.

Nurseries accept children who will be three or four by Dec. 1, 1973. Most also accept

five - year - olds who have not yet started kindergarten.

Usually the different age groups are placed in separate classes.

These are the cooperative nurseries serving Oberverland families:

**BULMAN Nursery, Inc.** -- Has three classes, one for three-year-olds two mornings a week and two for four-year-olds, two mornings or two afternoons a week. All meet in St. Paul Presbyterian Church, Five Mile west of Inkster, Livonia. Call Mrs. William Tancill, 17425 Doris Lane, Livonia.

**FAMILY LIFE Nursery** - Has two classes, one for three-year-olds and one for four-year-olds. Both meet two mornings a week in North Congregational Church, Lahser and Northwestern in Southfield. There is possibility that

the four-year-olds may also meet one afternoon a week next year if enough parents are interested. Call Mrs. Richard H. Lear, 19591 Hickory Lea Lane, Southfield.

**FARMINGTON** Cooperative Nursery - Meets in Our Lady of Sorrows Catholic Church, 2361 Powers, Farmington, with classes for three - year - olds two mornings a week and for four - year - olds three afternoons a week. Call Mrs. Regina

*observing*  
**Life** *observer*  
**newspapers**

Wednesday, March 7, 1973 Page #18

Publications of The Government Extension Service  
Lorraine B. Observer, Editor  
Observer, Union Observer, Ph.D. Observer, Home Observer, Ph.D. Observer, Southland News & Observer and Western Observer

the Garden City Presbyterian Church, Middle Belt just south of Ford. Three-year-olds are in one class, meeting in the morning. Four-year-olds are scheduled in one morning and two afternoon sessions. Call Mrs. Harry Spencer, 652-1444, Dillon, Garden City, to enroll three-year-olds and Mrs. Robert Fortin, 35638 Elmira, Livonia, to enroll four-year-olds.

• **HENRY CLAY Pre - School Nursery** - Has two sessions for four- year olds, one meeting three mornings a week and the other three afternoons. This nursery was established for children in the Henry Clay school, located at Six Mile and Levan in Livonia, but is not restricted to residents of that district. Call Mrs. Robert Sluka at 16791 Fitzgerald, Livonia.

**LATHRUP COOPERATIVE**  
Nursery - Children three, four  
and five years of age meet  
together three mornings a week  
in the Southfield United  
Methodist Church, 23795 Civic  
Center Drive, Southfield. Call  
Mrs. James H. Toltz, 2822  
Ranchwood, Southfield.

**LIVONIA NURSERY, Inc.**  
Has three classes, one for three-year-olds, one meeting on Mondays mornings a week and two for four-year-olds meeting on Wednesdays mornings or three afternoons a week. The location is Rosedale Gardens United Presbyterian Church, Hubbard and West Chicago, Livonia. Call Mrs. Donald Unsworth, 31815 West Chicago. This nursery will hold a masterpiece auction at 8 p.m. May 14 in the church. Each mother or father will make something to sell to raise funds.

**MAYFAIR** Cooperative Nursery School -- Has four classes meeting in Orchard United Methodist Church, Mile and Farmington Roads, Farmington. Three year-olds have one twice a week class and for four year-olds there are two classes meeting three times a week and one meeting twice a week. Call Mrs. K. Patterson, 31200 Sturbridge Farmington.

**MT. HOPE Cooperative**  
Nursery - Has classes for three-  
year-olds and four-year-olds,  
each meeting two mornings a week in Mt. Hope  
Congregational Church, 303  
Schoolcraft, Livonia. Call Mr.  
Robert Butrico, 35656 Minto  
Livonia

**NORTH LIVONIA Nursery**  
Has one class for three - year olds, meeting two mornings a week, and two classes for four year - olds, meeting three times a week morning or afternoon.

Holy Cross Evangelical Lutheran Church, 30650 Six Mile Livonia. Call Mrs. Richard Deska, 32010 Pembroke, Livonia. The nursery is planning fathers' days on three Sundays: March 11, 18 and 25, and an open house for prospective parents in May.

**PLYMOUTH CHILDREN'S**  
Nursery - Has five classes that meet in the schoolhouse located at the corner of Warren and Haggerty in Plymouth Township. Two classes are half three-year-olds and half four-year-olds and meet two mornings a week. There is a one-morning-a-week class for three-year-olds. In the afternoon there are two classes for four-year-olds, one meeting three times a week and the other twice. Call Mrs. Thomas Nasser, 713 Maple, Plymouth.

**REDFORD TOWNSHIP**  
Nursery -- has three classes  
one for three - year - olds  
meeting two mornings a week  
and two for four - year - olds  
meeting twice a week morning  
and afternoons. This nursery  
formerly was located in  
Redford Township church, but  
a fire there forced a move to  
the Jefferson School. A new  
location for the 1973 - 74 school  
year will be announced later.

**SALEM NURSERY** -- Has two classes, one for three - year-olds and one for four - year-olds, both meeting two mornings a week in St. Martin's Episcopal Church, Grand River near Seven Mile. An orientation for prospective parents members is planned in May. Call Mrs. Joe Petroski, 1681 Heyden Detroit.

**SOUTHFIELD NURSERY**  
Play Center Inc. -- Has two morning classes; one meeting three days a week and the other two in the Northwest Unitarian - Universalist Church, 2395 North Western, Southfield. Three- and four-year-olds are mixed in both classes. Call Mrs. Alden Halpert, 2194 Concord Southfield.

**WAYNE NURSERIES Inc.**  
Has two twice - a - week sessions for four - year - olds one meeting in the morning and the other in the afternoon at Warrenwoods . Wesleyan Church, Warren and Venetia Westland. A third session for four - year - olds may be added next year. One session for three - year - olds meets two mornings a week. Call Mrs. Richard Kearis, 31024 Avondale, Westland

**WESTLAND Nursery, Inc.**  
Has one class for three - year olds and one for four - year olds

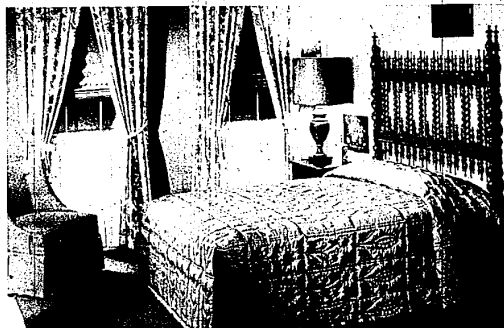
IN COOPERATIVE nurseries you find teachers, mothers and fathers -- but mostly kids. Our pictures were taken by photographers Bob Woodring and Leonard Poger in sessions of the Bulman and Garden City cooperatives. Mrs. Arlyne Lewis teaches the Bulman class (above left). Laurie Nicholson and Mrs. Jean Harris enjoy finger painting (above center), and Milton Baker goes fishing with his daughter, Brenda, (above right). The bright-eyed telephoner in the doll corner is Karen George.

spring refresher.

Great sale of nettle creek bedspreads

A bedspread in lilting colors with nice hand-guided quilting ... delightful in many settings and a remarkable value.

Twin \$75  
Full size \$82  
Queen, King \$94



*"A Ray Interiors exclusive" . . . yes, our quantity-buying makes these extraordinary prices possible. These elegant antique satin bedspreads are available in your choice of ten stunning colors, ranging from Cerise to Wedgewood. Choose your color. choose your size, and bank your savings.*

Our professional interior designers can help you coordinate draperies, window shades, furniture and accessories for a truly glamorous effect. Master Charge, BankAmericard, and our own custom charge.

## Ray Interiors

*furnishings for distinctive homes*

**33300 Slocum Drive, Farmington (2 blks S. of Grand River off Farmington Rd.)**  
**Phone 476-7272. Monday, Thursday, Friday 'til 9 P.M.**