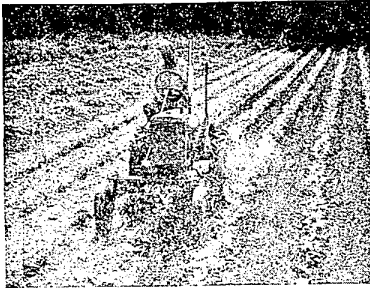


February Is Farmall Cub Month



The Farmall Cub tractor, manufactured by International Harvester Company, is shown here with its one-row cultivator working in beans. The Farmall Cub offers small-acreage and part-time farmers all the advantages of complete, low-cost mechanization. It is designed to handle all field and garden crop operations.

EVERETT IMPLEMENT CO.

"YOUR INTERNATIONAL HARVESTER DEALER"

Grand River at Orchard Lake Rd. Phone 1515

MACDONALD'S FARM FARMINGTON MILLS

| | |
|---|------|
| Further decline in grain prices has reflected into much lower feed prices. We stand in the 10th Series. | 3.90 |
| Delight SCRATCH FEED | 4.30 |
| Delight EGG MASH | 4.30 |
| Delight CHICK GROWER | 4.65 |
| (Prints) | |
| Delight CHOP FEED | 3.80 |
| Delight PIG BUILDER | 4.25 |
| Delight CRACKED CORN | 3.65 |
| Delight WHEAT BRAN | 3.30 |
| Arday DAIRY FEED 15% | 3.25 |
| Larro DAIRY FEED 20% | 4.20 |
| Larro EGG MASH (prints) | 4.85 |
| Larro BROILER PELLETS | 4.25 |
| Larro RABBIT PELLETS | 5.25 |
| Fuli-O-Pep EGG MASH | 4.35 |
| Fuli-O-Pep BROILER MASH | 4.95 |
| Master Mix RABBIT PELLETS | 5.50 |
| Master Mix CALF PELLETS | 6.00 |

It will pay you to buy from us on a declining market because we follow the market daily.

Are you having nightmares trying to figure out where to buy feeds that aren't so high and unreasonable? We can solve that problem... the FARMINGTON MILLS. We carry a line of LARRO feeds which are high in quality but low in cost. With the young chicks in the spring you'll be needing chick builder and broiler ration from our store.

MILLERS OF FLOUR AND FEED FOR OVER 50 YEARS

FARMINGTON MILLS

ESTABLISHED 1895 33408 STATE ST. L.F. GILDEMEISTER, OWNER

CATTLE HEALTH IS DEPENDENT UPON NUTRITION FACTOR

What farmers feed their dairy cattle often affects reproduction. This fact has been shown by a number of tests at the Michigan Agricultural Experiment Station.

C. F. Huffman, research scientist at Michigan State College, says that early experiments showed that the feeding of wheat straw in place of hay resulted in reproductive failures. Calves were often born dead, weak, or blind. Cows fed good green timothy hay reproduced in a normal manner.

Hay furnished carotene which is changed to Vitamin A by the animals. The possibility of Vitamin A deficiency occurring among cows under farm conditions appears remote because large quantities of this vitamin are stored in the body during the pasture period, Huffman reports.

The trace elements needed for normal reproduction are iodine and copper. Chemical tests of Michigan hay indicate the lack of copper is unlikely. Iodine deficiency, however, occurs on many farms in Michigan. A lack of this element during the last few months of pregnancy results in the birth of calves with "big neck" or goiter. Huffman advises that iodized salt be fed on such farms.

A Subscription will Save Money!

TAXI FAX

DON'T JUMP AT CONCLUSIONS

... call the FARMINGTON CITY CAB COMPANY when you want any packages delivered or picked up. We offer this service any time... day or night. SERVING YOU IS OUR PLEASURE.

Farmington City Cab

NEW TELEPHONE NUMBER 2570

"MY MOW CURING SYSTEM WAS A 'CINCH' TO SET UP!"

ELECTRIC HAY DRYING IS SUITED TO ANY SIZE BARN!

Equipment for mow curing hay is so simple to install and operate that any farmer can use it successfully. No boilers or coils are required—no costly equipment is needed.

Electric hay drying eliminates long field drying... permits high moisture-content while putting up. And no change is needed from your present system of making hay.

For complete specifications on the layout best suited to your needs, ask your Edison Farm Service Advisor *without delay!* He can give you practical help in planning a low cost curing system for your barn.

DUCT SYSTEMS ARE EASY TO INSTALL—ECONOMICAL TO OPERATE

FOUR OTHER ELECTRIC HAY DRYING ADVANTAGES

1. Cuts down weather risk—permits curing at right stage of maturity; rain, dew, and excessive sun bleaching eliminated; saves hay losses to bad weather.
2. Improves hay quality—eliminates leaf shattering, sun burning; assures more leaves, more color; gives increased food value, increased market value.
3. Reduces danger of spontaneous combustion—controlled temperatures in mow prevent hazards of fire.
4. Saves money—makes money—small investment, low operating costs; pays for itself in one season. Farmers claim \$1 to \$10 more per ton for mow-cured hay.

Can be used with loop, chopped or baled hay.

The DETROIT EDISON Co.

FARM FEATURES

New World Record Corn Yield



Carroll Brown, 35, member of the Iowa state legislature, is shown above on his farm near Rose Hill, Ia., where he produced a new world record in corn production—224.2 bushels per acre. The record was established in the 1948 Iowa Ten-Acre Yield test, an official contest sponsored by the Iowa Corn and Small Grain Growers association. Mr. Brown's record was made with Genuine Pioneer Hybrid No. 347 and No. 179 planted in old glacial sand. Fertilization was 200 pounds per acre of 45 per cent triple phosphate.

Fruit Growers To Meet Feb. 23

The annual meeting of the Southeastern Michigan Fruit Growers Society, held jointly with the Michigan Horticultural Society, will be held in the Oakland County office building, in Pontiac, Wednesday, February 23.

It is expected that the meeting will attract several hundred fruit growers from the 10 counties in Southeastern Michigan comprising the society.

The meetings are open to all fruit growers who wish to attend, as well as the general public. Paul Butten, of Farmington, has served on the program committee, and is one of the directors of the society. Karl D. Bailey, agricultural agent, will also participate.

The morning program, under the direction of Chairman R. L. Everts, of Metamora, will include discussions on such topics as "Effective Rodent Control Practices in the Orchard", "Utilization of New Spray Materials", "Composition of Michigan Apple Production", "Orchard Soil Management", "Prepackaging of Fruits and Vegetables". In the afternoon the Michigan Horticultural society will hold a business meeting, followed by discussion periods of various topics, including "Essentials of Profitable Strawberry and Raspberry Growing", "Blossom Thinning of Apples and Peaches", "Control of Red Banded Leaf Roller, Red Mite, Bud Moth and Two-Spotted Mite", as well as observations on California and Michigan fruit growing. A question period will be conducted by Karl D. Bailey, agent for Oakland County.

On the program to address the groups are C. A. Langer, A. B. Mitchell and A. L. Kenworthy of the Horticultural department of Michigan State College; Winard Farley, Jr., of the Michigan Apple Commission; Jerry H. Mandigo, Horticultural agent from Paw Paw; John Davidson of the Dow Chemical Company; Midland Boy Hutson, Michigan State College entomologist and H. D. Hootman, secretary of the Michigan State Horticultural Society.

MORE SOIL TESTING LABS ARE SET UP IN FARM COUNTIES

The establishment of soil testing laboratories in about ten counties in Michigan is the result of increased interest by farmers and agricultural groups in soil testing in the last three years.

Kirk Lawton, soils scientist at Michigan State College, says that this is one of the most useful services farmers can make since soil tests are necessary for a good fertility program.

The county soil testing laboratory provides a valuable service for the farmer or grower. The results of soil tests in the county laboratory are turned over to the county agricultural agent. He is often familiar with the particular farm area tested and can interpret the tests and make soil management recommendations.

The sponsorship of these laboratories has been undertaken by local agricultural groups including the county board of supervisors, farm organizations, the soil conservation district, and local business and civic groups. The soil science department at Michigan State College assists in setting up the laboratory equipment and methods. Soil tests are generally made for acidity, available phosphorus, and available potassium. A slight charge is made to defray costs of labor, equipment and chemicals.

Lawton advises farmers who wish to learn more about a soil testing program to get in touch with their county agricultural agent.

HIGH TEST HERDS GIVEN HONORS AT FARMERS' WEEK

Honored during Farmers' Week at Michigan State College were dairymen whose herds averaged over 400 pounds of butterfat under DHIA test for each of the past five years.

Leading the list with 1948 herd averages only were F. W. Tullis, Monroe, 578 pounds with registered Holstein cows; Dean Straub, Galien, 523 with registered Holsteins; Jay Dowdy, Ovid, 504 with registered Holsteins; and Myron Jacobs, 500 with registered Guernseys.

Other herds with more than 400 pounds were: L. H. Coffey, Fowlerville; Nye Brothers, St. Joseph; Hudson Brothers, Berrien Center; Arden W. Wright, Marcellus; Fred Bleason and Son, Sodus; Harold Klockleem, Laingsburg; Russel Fife, Niles; William R. Thomas, Ovid; Sole and Ensign, Sherwood; Ed Alles and Sons, Rockford; Armstrong Brothers, Fowlerville; Chas. Smith and Son, Galien; George Mathews, Union City; and Vern Vandemark, Fairgrove.

SELL IT WITH A CLASSIFIED Classified Ads Get Results

TURN YOUR IDLE SCRAP INTO LIVE DOLLARS
Cast Iron — \$40 per ton
Old Batteries — \$3 each
Other price correspondingly high.
Northville Scrap Iron & Metal
Black of FM Dept
PHONE 180
Prices subject to change without notice.

Length Of Sheep Jaws Aids Product Quality

A good point to consider when buying sheep is the length of the jaws, say Michigan State College sheep specialists.

If the jaws are of unequal length it is difficult for the sheep to make the best use of roughage.

FUEL OIL

DOMESTIC COMMERCIAL
MOTOR CITY OIL CO.

Will Accept New Customers in Your Vicinity
Near Major Prices

Call Farmington 0221

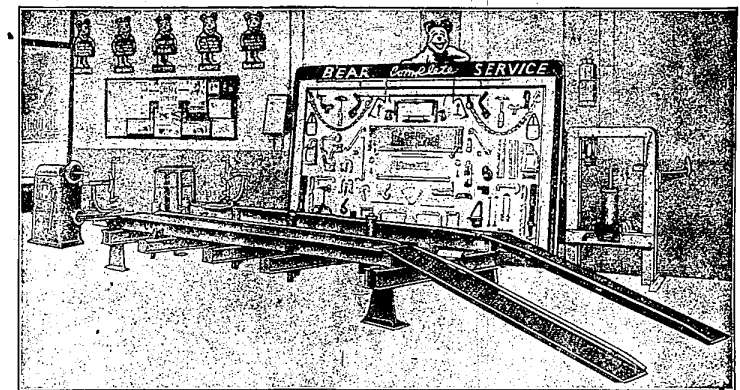


ANNOUNCING

Our New

BEAR Tire and Car SERVICE

Tire and Car Saving



You are cordially invited to visit Our New Department
See the Machine that adds Thousands of Miles to your Tires,
gives you Greater Driving Comfort and Safety

Now we are in a position to offer you that famous BEAR STEERING SERVICE. Yes, it is the same service that you have seen advertised nationally in the leading weekly magazines.

If your tires have a cupped or scrubbed look or show signs of uneven wear; if your car has a tendency to wander, weave or pound as it goes down the road, take heed. These are danger warnings of conditions that may lead to ruined tires or a very costly or tragic accident.

Protect your pocketbook, safeguard the lives of your passengers and yourself by stopping in today for a wheel alignment and wheel balance inspection in our new Bear Department.

Our skilled factory trained Bear operators will check your car with precision gauges. In case any misalignment or unbalance exists, we are completely equipped to make the proper corrections or adjustments. BEAR SAFETY SERVICE saves Tires — saves Cars — saves Lives.

Don't Gamble -- Don't Delay -- Drive In Today

Wheel Alignment Service to Garages and Service Stations at a SPECIAL RATE

SMITH - BERLING COMPANY

"SERVICE STERLING"
PHONE 2390

GRAND RIVER at ORCHARD LAKE ROAD

FARMINGTON, MICHIGAN



BABY CHICKS

PLACE YOUR ORDER WITH US NOW!

Only \$16.50 per 100
START A FLOCK OF CHICKS THIS SPRING
You Can Afford To Buy Feed Now — Prices Are Going Down.

BEST

AUTHORIZED DISTRIBUTORS — FOR — Feeds

FUSTON FEED COMPANY
33314 W. Seven Mile Rd.
AT FARMINGTON ROAD Phone 0671

INSULATE YOUR HOME

FOR MORE COMFORTABLE LIVING

BALSAM WOOL
SEALED INSULATION

Standard Thick 5½c sq. ft.
Double 8c sq. ft.

ARMSTRONG GLASS WOOL
Medium Blanket 6c sq. ft.

ZONOLITE
Pours into place \$1.45 bag
Poured 3" thick covers 17 sq. ft.

Farmington Lumber & Coal Co.
"EVERYTHING FOR THE BUILDER"
32800 Grand River Phone 0020