

**George Lockhart**

Fellow American Society of  
Piano Technicians  
Pianos Tuned - Rebuilt  
Reconditioned

PHONE  
Northville 678-W

**Sawmill Directories Now Available From Lansing**

Wood using industries and other interested persons can now secure a directory of sawmills located in the southern half of the lower peninsula from the conservation department.

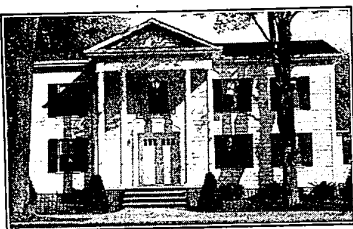
Copies can be obtained from district foresters or by writing to the department's forestry division at Lansing. A directory of sawmills in the northern part of the lower peninsula also is available.

**For Spring '49**

A soft new look, with short curled hair — so alluring with a new spring bonnet.

Make Your Appointment for a new PERMANENT and HAIR STYLE

Jean's Beauty Salon Phone 0630



## Spencer J. Heeney

### Funeral Home

For 28 years, on call 24 hours a day, I have never failed to personally conduct every funeral.

ESTABLISHED 35 YEARS

23720 N. Farmington Road Phone 0470

**All Insured Cold Storage**

**PRICES SLASHED!**

FUR COATS  
HAND CLEANED BY THE  
SAWDUST FURRIER'S  
METHODS

**\$3.95**  
Only 2% OF VALUATION

PROTECTS  
FURS  
and  
WOOLENS

MEN'S OVERCOATS . . \$189  
INCLUDING UP TO \$25 INSURANCE  
MEN'S & LADIES' SUITS . \$179  
INCLUDING UP TO \$25 INSURANCE  
LADIES' DRESSES, plain . \$179  
INCLUDING UP TO \$25 INSURANCE  
LADIES' COATS, plain . \$189  
INCLUDING UP TO \$25 INSURANCE

STORED IN  
SCIENTIFICALLY  
COOLED VAULTS

Pay Next Fall!

**SPECIAL**  
BATHROBES . . . 69c  
TIES . . . 4 for 19c

SHIRTS Beautifully laundered and finished in our modern laundry • Individually wrapped in cellophane 18c

**PRIDE**  
Cleaners

31404  
Grand River  
CORNER  
ORCHARD LAKE ROAD

# FARMINGTON BOWLING

**NEWS**

April 21, 1949  
Civic League

Team Games

Wanda's Bar	78	Kenner Tool	71
Farmington Bank	76	Van Valkenburg	70
Menke's Service	71	G & E Tool	69
Farmington Mills	69	LaRue Shaper	68
Dodge Plymouth	68	Tavern Auto	68
Fern. Hardware	67	Shield Tool	67
Farmington Radio	66	Western Tool	67
Farmington Dairy	63	Smith Berling	67
Conroy's Market	63	Mold-O-Matic	67
Farm. Fellowship	61	Hasley Products	67
Orbit Industries	58	L & H Dood	67
Curt Hall Pontiac	57	Jorgensen Tool	65
Everett Implement	55	Royal Tool	64
Farm. Lbr. and Coal	53	Eckerly Tool	46
Blackless Chevrolet	49	R & D Tool	42
Johnsons Market	38		

Legion League

No. and Capt.	Pts. Won	Total
11, J. McElroy	1	31
12, C. Goers	1	79
15, D. Fisher, Jr.	3	78
16, F. Haggard	4	70
17, J. Stollker	3	69
18, E. Catherman	3	69
7, F. Barber	4	68
8, J. Brewington	4	68
6, K. Bennett	1	65
2, W. Durham, Jr.	0	62
10, J. Altama	0	62
13, Al Smith	3	61
4, Al Lint	3	60
1, F. Schaeppeler	0	45
14, B. Stafford	1	44
9, C. Barber	1	44

High individual series, J. Mitchell, 673; high team series, G & E Tool, 2891. High individual single game, Ted Smith, 263; high team single game, G & E Tool, 1013.

A house tournament has been started. It has run two weeks and will run until the end of the month.

There are still 25 teams to bowl. Standings as of Monday night:

No. 8, J. Brewington, 594. High team series, No. 2, W. Durham, Jr., 2629.

### Band Boosters Hold Party At Clarenceville H. S.

The Band Boosters Mothers' Club will hold a card party April 29 at 8 p.m. in the study hall of the Clarenceville High School.

Purpose of the party will be raising funds for purchase of new band instruments.

Mrs. William Richmond, president of the organization, states \$800 for new band uniforms have been provided and the uniforms purchased.

At the card party, prizes will be awarded at the tables. These prizes are merchandise donated by stores. Refreshments will be served.

Chairman of the party committee is Mrs. Marble Hoppe. Her assistants are Mrs. Emma Nichols and Mrs. Grace Johnson.

### Local Pianists To Appear In Music Forum

Several youthful pianists of Farmington are scheduled to appear on the program of the Music Forum's Spring Musicale being presented Monday evening, May 2, at eight o'clock in the Auditorium of the McGregor Library, Massachusetts at Woodward, Highland Park, Michigan. The students being presented are the pupils of Ruth Dyer.

Mrs. Dyer indicated that friends of the students are cordially invited to attend.

In order of their appearance, they are: Judy McNeill, who will play, "Climb", by MacLachlan; "Joan de Banjo", by Repper, by Jane Boyce. Daniel Burnett is playing another of Repper's compositions called "Harbor Traffic". "Lois Ayres" selection is a Sonata by Mozart. Delene Ruth Domes will play Mozart's "Variations in C" and Weber's "Polka Brillante" is being played by Sylvia Jean Bates.

### State Lands To Be Auctioned

Public auctions of 11,597 acres of state owned land in the 15 upper peninsula counties are scheduled during the second week of May, at the conservation department announcements.

The department's land division is offering some acreage with water frontage in all counties except Gogebic, Ontonagon, Marquette and Chippewa, but advised most of this land is not desirable for summer cottage sites.

The auctions are to be held in county courthouses at 10:00 a.m. E. S. T., and the following lands will be offered:

At Escanaba, May 10, 2,599 acres in Luce, Schoolcraft, Menominee and Delta counties;

At Crystal Falls, May 11, 849 acres in Gogebic, Dickinson and Iron counties;

At L'Anse, May 12, 2,136 acres in Ontonagon, Keweenaw, Houghton and Baraga counties;

At Marquette, May 13, 4,322 acres in Alger and Marquette counties;

At St. Ignace, May 14, 1,639 acres in Chippewa and Mackinac counties.

Shop League

Team	Won	Lost
Westlake Eagles	72	48
Kenner Tool	71	49
Van Valkenburg	70	50
G & E Tool	69	51
LaRue Shaper	68	52
Tavern Auto	68	52
Shield Tool	67	53
Western Tool	67	53
Smith Berling	67	53
Mold-O-Matic	67	53
Hasley Products	67	53
L & H Dood	67	53
Jorgensen Tool	65	55
Royal Tool	64	56
Eckerly Tool	46	74
R & D Tool	42	78

High individual series, J. Mitchell, 673; high team series, G & E Tool, 2891. High individual single game, Ted Smith, 263; high team single game, G & E Tool, 1013.

A house tournament has been started. It has run two weeks and will run until the end of the month.

There are still 25 teams to bowl. Standings as of Monday night:

No. 8, J. Brewington, 594. High team series, No. 2, W. Durham, Jr., 2629.

At Escanaba, May 10, 2,599 acres in Luce, Schoolcraft, Menominee and Delta counties;

At Crystal Falls, May 11, 849 acres in Gogebic, Dickinson and Iron counties;

At L'Anse, May 12, 2,136 acres in Ontonagon, Keweenaw, Houghton and Baraga counties;

At Marquette, May 13, 4,322 acres in Alger and Marquette counties;

At St. Ignace, May 14, 1,639 acres in Chippewa and Mackinac counties.

A centrifuge capable of exerting a force 1,000 times that of gravity has been developed at the Naval Ordnance Laboratory.

A fast carrier last group of World War II could throw 200 tons of metal a minute at attacking aircraft.

### U. Of M. Will Hold Drum Major Contest May 21

Drum majors and majorettes from throughout the nation will gather in Ann Arbor May 21 for the University of Michigan Bands National Drum Major Contest, first such competition ever held anywhere.

The contest is open to junior and senior high school and college students. May 10 has been listed as the final date for receiving entries, according to Jack K. Lee, assistant conductor of University Bands and contest chairman.

Gold medal awards will go to the best military, twirling and all-around drum majors and to the outstanding drum majorette, Lee said. Other medals and certificates will be awarded to winners in the various divisions.

The contest will be held at Ferry Field.

### State Forest And Grass Fires Burn 4130 Acres

Forest and grass fires, 211 of them, took a heavy 4,130 acre toll last week in spite of a return visit of winter, complete with snow, rain and cold weather.

The total already burned in the short span of three weeks amounts to 10,497 acres, the conservation department warns.

The department's latest forest fire report shows 2,759 acres fired in the northern half of the lower peninsula and 906 acres in the southern half of the state.

The department's latest forest fire report shows 2,759 acres fired in the northern half of the lower peninsula and 906 acres in the southern half of the state.

The department's latest forest fire report shows 2,759 acres fired in the northern half of the lower peninsula and 906 acres in the southern half of the state.

The department's latest forest fire report shows 2,759 acres fired in the northern half of the lower peninsula and 906 acres in the southern half of the state.

The department's latest forest fire report shows 2,759 acres fired in the northern half of the lower peninsula and 906 acres in the southern half of the state.

The department's latest forest fire report shows 2,759 acres fired in the northern half of the lower peninsula and 906 acres in the southern half of the state.

The department's latest forest fire report shows 2,759 acres fired in the northern half of the lower peninsula and 906 acres in the southern half of the state.

The department's latest forest fire report shows 2,759 acres fired in the northern half of the lower peninsula and 906 acres in the southern half of the state.

The department's latest forest fire report shows 2,759 acres fired in the northern half of the lower peninsula and 906 acres in the southern half of the state.

The department's latest forest fire report shows 2,759 acres fired in the northern half of the lower peninsula and 906 acres in the southern half of the state.

The department's latest forest fire report shows 2,759 acres fired in the northern half of the lower peninsula and 906 acres in the southern half of the state.

The department's latest forest fire report shows 2,759 acres fired in the northern half of the lower peninsula and 906 acres in the southern half of the state.

The department's latest forest fire report shows 2,759 acres fired in the northern half of the lower peninsula and 906 acres in the southern half of the state.

The department's latest forest fire report shows 2,759 acres fired in the northern half of the lower peninsula and 906 acres in the southern half of the state.

The department's latest forest fire report shows 2,759 acres fired in the northern half of the lower peninsula and 906 acres in the southern half of the state.

The department's latest forest fire report shows 2,759 acres fired in the northern half of the lower peninsula and 906 acres in the southern half of the state.

The department's latest forest fire report shows 2,759 acres fired in the northern half of the lower peninsula and 906 acres in the southern half of the state.

The department's latest forest fire report shows 2,759 acres fired in the northern half of the lower peninsula and 906 acres in the southern half of the state.

The department's latest forest fire report shows 2,759 acres fired in the northern half of the lower peninsula and 906 acres in the southern half of the state.

The department's latest forest fire report shows 2,759 acres fired in the northern half of the lower peninsula and 906 acres in the southern half of the state.

The department's latest forest fire report shows 2,759 acres fired in the northern half of the lower peninsula and 906 acres in the southern half of the state.

The department's latest forest fire report shows 2,759 acres fired in the northern half of the lower peninsula and 906 acres in the southern half of the state.

The department's latest forest fire report shows 2,759 acres fired in the northern half of the lower peninsula and 906 acres in the southern half of the state.

The department's latest forest fire report shows 2,759 acres fired in the northern half of the lower peninsula and 906 acres in the southern half of the state.

The department's latest forest fire report shows 2,759 acres fired in the northern half of the lower peninsula and 906 acres in the southern half of the state.

The department's latest forest fire report shows 2,759 acres fired in the northern half of the lower peninsula and 906 acres in the southern half of the state.

The department's latest forest fire report shows 2,759 acres fired in the northern half of the lower peninsula and 906 acres in the southern half of the state.

The department's latest forest fire report shows 2,759 acres fired in the northern half of the lower peninsula and 906 acres in the southern half of the state.

The department's latest forest fire report shows 2,759 acres fired in the northern half of the lower peninsula and 906 acres in the southern half of the state.

The department's latest forest fire report shows 2,759 acres fired in the northern half of the lower peninsula and 906 acres in the southern half of the state.

The department's latest forest fire report shows 2,759 acres fired in the northern half of the lower peninsula and 906 acres in the southern half of the state.

The department's latest forest fire report shows 2,759 acres fired in the northern half of the lower peninsula and 906 acres in the southern half of the state.

The department's latest forest fire report shows 2,759 acres fired in the northern half of the lower peninsula and 906 acres in the southern half of the state.

The department's latest forest fire report shows 2,759 acres fired in the northern half of the lower peninsula and 906 acres in the southern half of the state.

The department's latest forest fire report shows 2,759 acres fired in the northern half of the lower peninsula and 906 acres in the southern half of the state.

The department's latest forest fire report shows 2,759 acres fired in the northern half of the lower peninsula and 906 acres in the southern half of the state.

The department's latest forest fire report shows 2,759 acres fired in the northern half of the lower peninsula and 906 acres in the southern half of the state.

The department's latest forest fire report shows 2,759 acres fired in the northern half of the lower peninsula and 906 acres in the southern half of the state.

The department's latest forest fire report shows 2,759 acres fired in the northern half of the lower peninsula and 906 acres in the southern half of the state.

The department's latest forest fire report shows 2,759 acres fired in the northern half of the lower peninsula and 906 acres in the southern half of the state.

The department's latest forest fire report shows 2,759 acres fired in the northern half of the lower peninsula and 906 acres in the southern half of the state.

The department's latest forest fire report shows 2,759 acres fired in the northern half of the lower peninsula and 906 acres in the southern half of the state.

The department's latest forest fire report shows 2,759 acres fired in the northern half of the lower peninsula and 906 acres in the southern half of the state.

The department's latest forest fire report shows 2,759 acres fired in the northern half of the lower peninsula and 906 acres in the southern half of the state.

The department's latest forest fire report shows 2,759 acres fired in the northern half of the lower peninsula and 906 acres in the southern half of the state.

The department's latest forest fire report shows 2,759 acres fired in the northern half of the lower peninsula and 906 acres in the southern half of the state.

The department's latest forest fire report shows 2,759 acres fired in the northern half of the lower peninsula and 906 acres in the southern half of the state.

The department's latest forest fire report shows 2,759 acres fired in the northern half of the lower peninsula and 906 acres in the southern half of the state.

The department's latest forest fire report shows 2,759 acres fired in the northern half of the lower peninsula and 906 acres in the southern half of the state.

The department's latest forest fire report shows 2,759 acres fired in the northern half of the lower peninsula and 906 acres in the southern half of the state.

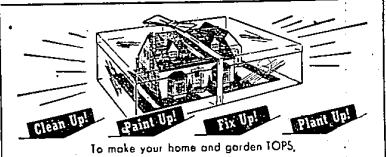
The department's latest forest fire report shows 2,759 acres fired in the northern half of the lower peninsula and 906 acres in the southern half of the state.

The department's latest forest fire report shows 2,759 acres fired in the northern half of the lower peninsula and 906 acres in the southern half of the state.

The department's latest forest fire report shows 2,759 acres fired in the northern half of the lower peninsula and 906 acres in the southern half of the state.

The department's latest forest fire report shows 2,759 acres fired in the northern half of the lower peninsula and 906 acres in the southern half of the state.

The department's latest forest fire report shows 2,759 acres fired in the northern half of the lower peninsula and 906 acres in the southern half of the state.



To make your home and garden TOPS, see us for brushes, paints and mops.

## THIS WEEK'S FEATURE

**SCREEN ENAMEL**  
A special sash and screen enamel which applies easily with brush or screen applicator.  
Black only. Flat. . . . . 38c

**LAWN BRUME**  
Has flexible metallic teeth. It's tight in weight yet it's tough and springy. Rakes without tearing up grass roots. Ready-to-use.  
Rust Proof Leak Proof  
\$1.25

**WALLPAPER CLEANER**  
GENUINE WHEELING HAND-DIPPED TWIN-PAUL GUARANTEED  
\$1.45

**DICKERSONS HARDWARE**  
25224 Orchard Lake Road  
AT 10 MILE ROAD

**FARMINGTON - CITY CAB - 2570**  
24 HOUR SERVICE  
TAXI SERVICE  
ALWAYS, IN ALL WAYS

**“Our 145-horsepower Ford Model F-8 BIG JOB is THE BEST TRUCK we ever had for heavy construction work!”**

**Side Report**  
FORD TRUCKS  
IKE TALBERT  
MERIDIAN, MISS.

**WE ARE completely sold on the extra power, economy, durability, as well as the low maintenance cost of the Model F-8 Ford,”**

**reports Ike Talbert of Meridian, Mississippi. “Our 145-horsepower Model F-8 is the best truck we ever had for moving heavy dirt-construction equipment. The longer we operate this truck, the more satisfactory it is.”**

**Sensational reports on the new F-7 and F-8 Ford Big Jobs are coming in from everywhere. Men who know trucks claim 6,000 miles per month, for months on end, with no time out . . . gross loads of 50,000 lbs. . . power that leaves other trucks eating dust . . . passenger-car type of driving ease and comfort . . . gasoline economy that even smaller two-ton trucks cannot excel on comparable runs. Come in and let us give you more facts on the Mr. Big of big-time trucking—the Ford Big Job for 1949.**

**★ Brand New 145-Horsepower Ford V-8 Truck Engine**

**★ New Heavy Duty Quadrax Axles; Single-Speed and Two-Speed**

**★ Big Tires; up to 10.00-20 on F-8, up to 9.00-20 on F-7**

**★ New Heavy Duty Five-Speed Transmissions**

**★ Big Rear Brakes, Power Actuated, 16-in. by 5-in. on F-8**

**★ Built and Warranted for the following ratings:**

**‘49 FORD F-7** Gross Vehicle Weight 19,000 lbs. Gross Train Weight 35,000 lbs.

**‘49 FORD F-8** 21,500 lbs. 39,000 lbs.

**★ Nationwide Service From Over 6400 Ford Dealers**

Your Ford Dealer invites you to listen to the Ford Allen Show, Sunday Evenings—11:30 Network. Listen to the Ford Theater, Friday Evenings—CBS Network. See your newspaper for time and station.

**Everything Goes IN..**

**(Over 139 Models)**

**FORD**

**Bonus Built**

**TRUCKS**

**BUILT STRONGER TO LAST LONGER**

USING LATEST REGISTRATION DATA ON 6,106,000 TRUCKS, LIFE INSURANCE EXPERTS PROVE FORD TRUCKS LAST LONGER!

**SMITH - BERLING COMPANY**