



**Who's the boss  
IN  
YOUR  
CAR?**

Do you drive your car or does your car drive you? Let us take the "winter bugs" out and give you complete control behind the wheel. Rapid service — low cost. Drive up today!

Bumper to Bumper Know-How

**WE SERVICE  
DYNA-FLOW — HYDRAMATIC  
FLUID DRIVE**

**We Rebuild Old Engines — Install New Engines  
Give You Complete Brake Service  
Using Only AUTHORIZED Manufacturers Parts  
For All Makes of Cars**

**PHONE 0330 GENERAL AUTO REPAIR**  
JAMES E. LAYN  
33712 Grand River

### Our Resolution for 1950

... is to continue our policy of milling and selling high quality products for the lowest possible prices and give the same good service we have tried to give in the past 55 years of operation.

We would like to give you one of our kitchen calendars. We also have some farm account books left for our farmer friends.

### BIRD SEED

Scarlett's WILD BIRD SEED  
15c lb.  
SUNFLOWER SEED  
30c lb.

MILLERS OF FLOUR AND FEED FOR OVER 50 YEARS  
**FARMINGTON MILLS**  
ESTABLISHED 1895  
33408 STATE ST. L.F. GILDEMEISTER, OWNER  
FARMINGTON, MICH. PHONE 6024

### Dairy Inspectors Summarize Year

Dairy inspection is never finished, said F. M. Skiver, Chief of the Bureau of Dairying, in giving a brief summary of the past year of dairy work under the Michigan Department of Agriculture.

With only 30 full time dairy inspectors to cover the entire state they can always find plenty to do. The inspectors have some 140,000 farms, 1200 dairy plants and stations, and 550 ice cream manufacturers to inspect. State inspectors try to reach every dairy plant for a complete check twice or three times a year.

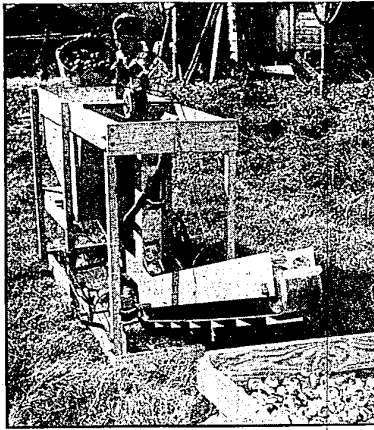
During the year just past, fieldmen from the Bureau of Dairying made approximately 5,000 official inspections and 17,000 official calls. In checking quality of raw milk and cream received at the dairy plants, 30,000 cans of milk were rejected and approximately 40,000 pounds of cream intended for use in the manufacture of butter were rejected as unfit for use in the manufacture of dairy products. Inspectors also condemned 6,425 milk and cream cans as unfit containers.

In enforcement of the dairy laws, 97 prosecutions were started. In two instances the cases were dismissed for lack of sufficient evidence. Prosecutions were largely on violations such as selling dirty milk, selling watered milk, selling ice cream and butter that were below the legal fat standards. The fines ranged from \$3 in some cases to \$100 for selling watered milk, and a fine of \$200 for selling low fat butter. One violator spent the 4th of July in jail for failing to comply with the Justice Court's order after conviction of a dairy law violation.

Skiver stated that his men are always careful to work with the local, city and county inspectors, but never duplicate inspection work. State dairy inspectors do very little farm inspection where the cities maintain adequate inspection of their own. State dairy inspectors have to devote most of their time to checking dairy plants and checking the farms producing milk for cities and villages that maintain no local inspection or enforcement.

The limited inspection personnel of the Bureau of Dairying will not permit a great amount of inspection on butter, and the state laws need revising before such inspection can be really effective, stated Skiver.

The United States produces the greatest amount of iron and steel in the world.



**BOY ELECTRIFIES FARM**—After running the gamut of 16-year-old Johnny Williams' dusting and counting machine, gladiolus bulbs are carried up by belt conveyor and dumped onto the screen in foreground. Johnny, who hails from Fayette, Ala., was one of 35 state winners in the "Better Methods" electric contest sponsored by the Westinghouse Educational Foundation.

### Oakland County 4-H Club News

By JOHN TROCKE, 4-H Club Agent

The farm implement dealers of Oakland County have organized into a council to promote the 4-H Club Tractor Maintenance Project. Farms have changed a great deal in the last few years and a large part of this change has been due to tractor power. Our young farmers need to know the specialized skills needed to operate and maintain these farm machines to prevent needless waste of fuel and repairs.

To answer this demand, the 4-H Live-Power program was started. Its slogan is: Better Care Not Repair. The farm equipment dealers in Highland, Pontiac, Holly, Davison, Orionville, Rochester, Farmington, Walled Lake, South Lyon and Waterford are each sponsoring a 4-H Tractor Maintenance Project. They will lead youngsters in demonstrations and lessons on tractor safety, air cleaner service, cooling system servicing, ignition and sparkplugs, carburetion and proper lubrication. The event will be climaxed by a Tractor Field Day to be held in the spring of the year. The 4-H members will put on the first contour plowing contest in the

State of Michigan as the main feature of the program. The Soil Conservation District Directors are co-sponsoring the plowing contest.

### 11 CAPERCAILLE SURVIVE TRANSFER TO WISCONSIN

At the recent Midwest Wildlife Conference, Wisconsin reported 11 capercaillie had survived from an original release of 26 of these birds and five black grouse. Both species were shipped in from Sweden and released on Wisconsin's Outer Island in Lake Superior. More will be imported in an attempt to establish these game birds in that state.

### Soil Conservation News

By Larry Tripp  
Soil Conservation Planner

Substituting hay crop silage for corn silage will help the soil and the pocketbook. The cost of growing hay crop silage is obviously much less than for corn silage. With corn silage the plowing, fitting, seeding and cultivation costs come every year. The seeding costs for alfalfa bromes can be spread out over several years.

Using the first cutting hay crop for silage allows a more flexible and efficient hay and pasture situation. Land yielding silage can be used for pasture in late summer when more acres of pasture are needed.

Land treated to improved practices should easily yield as much hay crop silage per acre as corn silage.

### No Golden Nematode Potato Pest In State

During the fall season the Bureau of Plant Industry of the Michigan Department of Agriculture has been working with the Bureau of Entomology and Plant Quarantine of the United States Department of Agriculture, in which 27,500 soil samples were collected in 32 counties to see if any specimen of the Golden Nematode which attacks potato roots and tubers, could be found, reports C. A. Boyer, Chief of the Bureau.

Golden Nematode has ruined the potato industry in some foreign countries and has been located in one county in New York State. It is a soil borne pest and can be carried by numerous host plants. All of the soil samples were officially checked in the U. S. D. A. Golden Nematode Laboratory located in Toledo, Ohio. They were gathered in the counties of Alger, Alpena, Antrim, Bay, Charlevoix, Cheboygan, Chippewa, Delta, Dickinson, Emmet, Genesee, Gogebic, Grand Traverse, Houghton, Iron, Isabella, Kalamazoo, Lenawee, Lapeer, Marquette, Mecosta, Menominee, Missaukee, Monroe, Montcalm, Oakland, Ogemaw, Oshtemo, Presque Isle, Saginaw, Tuscola and Washtenaw.

### FOR BOOKKEEPING AND ALL TAX RETURNS

**Call Farm. 0446**  
A PLAN TO FIT YOUR BUSINESS  
FOR PENNIES PER DAY  
**Farmington Bookkeeping Service**  
23037 Floral Ave. Farmington, Mich.



**When Were Your  
Eyes Examined  
Last?**

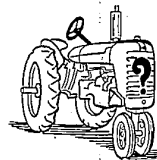
Be Sure — Be Safe  
Your eyes are so important.  
Don't take chances. Have  
them checked now!

**DR. M. M.  
HONEYMAN**  
OPTOMETRIST  
Eyes Examined  
Glasses Fitted

Contact Lenses

21620 GRAND RIVER AVENUE  
Phone KEnwood 1-8290 or 1-8291

### IS YOUR TRACTOR IN TOP CONDITION?



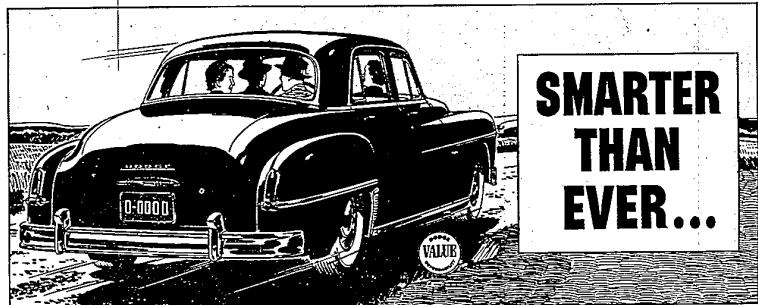
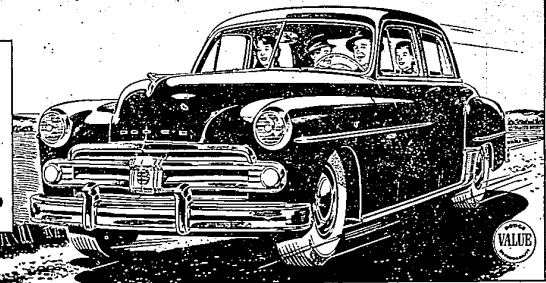
• Your tractor is the hardest working machine on your farm. Take good care of it because breakdowns mean a direct loss of time and money to you. Check your tractor now or better still bring it to us for a complete checkup.



### EVERETT IMPLEMENT CO.

"YOUR INTERNATIONAL HARVESTER DEALER"  
Grand River at Orchard Lake Road Phone 1515

**COMING  
OR  
GOING...**



### AGAIN THIS YEAR THE BIG VALUE IS DODGE!

You could pay a thousand dollars more and still not get all the new beauty... extra room... famous ruggedness of this great new Dodge

HERE'S BIGGER VALUE in smart new styling... in ease of handling... in comfort... in sound engineering... in actual dollars and cents, too, because the big new Dodge costs just a few dollars more than the lowest-priced cars.

Despite its smart, low, graceful lines OUTSIDE, Dodge is higher, wider, longer on the INSIDE to give you the roominess that spells solid comfort... that means extra room for your head, your legs. Less overhanging front and rear makes parking and garaging simpler, easier.

See this great new Dodge. Sample the flashing performance of the powerful high-compression "Get-away" Engine... the smoothness of Dodge Fluid Drive. Come in today.



**NEW BIGGER VALUE  
DODGE**

Just a few dollars more than the lowest-priced cars!



NEW VALUE! You'll thrill to the smoothness of Dodge Fluid Drive. Gyro-Matic, to free you from shifting, optional on Coronet models at moderate extra cost.

**HOWARD OTIS - 33015 Grand River Ave.**

Phone 0001

FARMINGTON, MICHIGAN

Phone 0909

**So Comfortable**  
EVEN THE SHEEP FALL ASLEEP...



WITH AN

### Automatic Electric Blanket

Honestly! It's just too relaxing for words to climb into a bed already warmed by an automatic blanket. You'll drift off to sleep before you know it. Why, even the sheep you've always counted can't stay awake.

Of course, you can count the added pleasures electric blankets bring. There's the delightful weight-free warmth... pride in owning a thing of beauty... ease in bed-making with

only one cover... savings in storage space with only one cover.

See an automatic electric blanket today at any Edison office, at your favorite department store or appliance shop.

**Detroit Edison**