

Complete
DRY CLEANING
and
LAUNDRY SERVICE
• PERSONALIZED FOR YOU •

MASTER SERVICE
Laundry

27565 Grand River Phone 1100
1 BLOCK EAST OF 8 MILE

Where Laundry and Dry Cleaning
Is a Full Time Business

"We Have A Feed For Every Need"

That's More Than a Slogan at FARMINGTON MILLS — It's a fact! You can always find the quality feed you want at FARMINGTON MILLS, whether it's:

CATTLE FEED
POULTRY FEED
RABBIT PELLETS
HORSE FEED
DOG FOOD

OUR 55 YEARS' EXPERIENCE HAS TAUGHT US
TO MAKE AND SELL THE PRODUCTS THAT WILL
PRODUCE THE BEST RESULTS FOR YOU.

MILLERS OF FLOUR AND FEED FOR OVER 50 YEARS

FARMINGTON MILLS

ESTABLISHED 1895 L. F. GILDEMEISTER, OWNER
33408 STATE ST. FARMINGTON, MICH. PHONE 0016

FARMERS INVITED TO FORM HUNTING CO-OPERATIVES

Southern Michigan farmers planning on Williamson hunting co-operatives next fall should submit applications to the conservation department's game division not later than September 10.

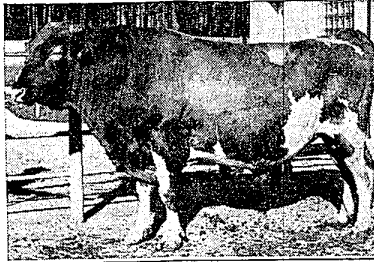
Those unfamiliar with the Williamson plan of controlled hunting can get complete information by writing to the game division at Lansing, Michigan.

Farmers on two or more square miles of land, banding together in a cooperative, may decide the maximum number of hunters they wish to permit on their lands. This number is apportioned among the members, who in hunting season will then issue two, three or four tickets per day allotted them. Since the hunter must ask for his ticket at the farmhouse and leave his car there, the farmer has an opportunity to look over the hunters that go onto his farm.

Game division representatives are available to explain the plan to groups of farmers, and the costs of printing tickets and boundary, gate and safety zone signs are borne by the conservation department — in consideration of the opening of the farmlands to some hunting.

Many farmers regard the Williamson plan as the happy medium between unrestricted hunting, with a trespass problem, and a complete ban on hunting, with the waste of the wildlife crop and, in the case of deer, the threat of crop damage by the expanding herd.

MSC Establishes Breeding Farm



CESOR NEPTUNE 284166

One of the real serious dairy problems farmers faced for years was securing rich dairy inheritance one generation after another. Farmers using the breeding program established by their own organization and represented by the seven-year-old bulls kept at East Lansing on one of the farms at Michigan State College have taken a long step to solve this problem.

Extension Dairyman A. C. Bolter says that thousands of dairy farmers in the past quarter century selected bulls which failed to improve production and thus depressed the money income to the dairy herd owner and his family. (Now a few carefully selected proved sires can provide the breeding ser-

VICES for the thousands of dairy herd owners and improved production is almost sure to result.) The dairymen understand that the breeding services come from rich milk and percent test inheritance in the sire. Such inheritance means keeping bulls until they are past five years, in order to compare the daughters with the bulls' mates or dams and thus secure proof of production.

Dairy farmers using bulls like Cesor Neptune will realize that his relationship to Anchor, Clare, Maxim and other richly bred Guernsey sires in use at the Michigan Artificial Breeders bull barns, East Lansing, is the answer and a long step in the direction of having continuous good production in their herds. Evidence from the Dairy Bureau, U. S. D. A., shows that a series of proved sires will go a long way toward planting rich milk inheritance in every day working dairy herds, and the farmers benefit from this by receiving improved dairy incomes. The proof on Neptune with 23 daughters having 40 records shows a yield of 8,966 milk, 5.1% test and 454 pounds fat. This kind of Guernsey inheritance is superior to that commonly found in one hundred other Guernsey sires listed in U. S. D. A. proofs, or it could be said Neptune is sufficiently good to be the one sired in a hundred that the farmer should have been using originally.

The Grist Mill

By ED ALCHIN

Keep an eye on the moisture content of your grain when getting ready to combine or thresh. Last year a great increase in the weevil in grain bins caused extensive loss in money to farmers in Oakland County. Today elevator operators cannot buy grain with too high a moisture content. Increased use of the combine means farmers must keep a close eye on moisture content in the grain. A sample test is to take a half pint of grain in a waxed carton, mix one teaspoon of salt, shake for two minutes, and pour out on a dry surface. If the salt particles are stuck together, then the grain is not ready to combine or thresh. Check with the manager before starting to combine. It takes a little time, but it may save you considerable money.

NATIONAL FOREST GROUSE HABITATS TO BE PRESERVED

To help maintain sharp-shinned grouse colonies in Michigan national forests, conservation department game men report agreement with federal foresters to exclude present habitat clearings from future tree planting programs.

No new habitat will be created, game men state, but present clearings in the Ottawa, Hiawatha, Marquette and Manistee national forests will be preserved.

Policy of maintaining habitat clearings in state forests has been in effect for several years.

The three-day national field archery tournament is scheduled at East Tawas August 18 - 21.

Racon Takes Joyride Under Department Jeep

Add a racoon with a penchant for joy riding in a jeep to the list of crazy characters in the wildlife world.

Game men at the conservation department's Rose Lake wildlife station are still puzzled as to whether the young male racoon used springs, differential housing or something else as a concealed perch for a bouncing three mile ride on the underside of a jeep.

Game biologist James Wheeler, running trap lines, tagged and released the animal. As many of the released coons do, this one temporarily scurried for cover beneath the jeep. Two hours and several miles later, Wheeler went home for lunch. After eating, game workers spotted a young racoon near the jeep, which they trapped. Tax number proved it to be the same racoon.

No man can possibly improve in any company for which he has not respect enough to be under some degree of restraint.

Birch Flush Doors

Manufactured by Haskelite

Arch-Kor Construction

2'6" x 6'8" x 1 3/8

\$12.95

**FARMINGTON
LUMBER & COAL CO.**

32800 Grand River

Phone 0020

Concrete Monuments Mark State Boundaries

Erection of concrete monuments on the shores of Lakes Michigan and Superior, marking watery dividing lines between Wisconsin, Michigan and Minnesota, has been completed except on the Michigan side of Lake Michigan.

Remaining work will be completed next summer, the conservation department's geological survey division reports.

Construction of the "reference points" is under the guidance of Prof. Jerry Service of the Michigan College of Mining and Technology.

STATE FARM INSURANCE



STATE OFFICE
MARSHALL, MICHIGAN

Local Agent

Maurice J. Brown
33636 Grand River
or U. S. 16



Come in
and See
ALL
THREE!

Right now you can have your pick of three vegetable-growing tractors — the Farmall Cub, Super-A, and C. They all have fingertip Farmall Touch-Control—and matched, quick-change multiple-row implements. Farming's a snap with new-way hydraulic implement control. Just ask about it...I'll be glad to explain how it saves not only your time but also your money.



**Everett
Implement Co.**
Your International Harvester Dealer
GRAND RIVER at ORCHARD LK.
PHONE 1515

DAVIS COUNTRY STORE

20330 Farmington Road • Phone 2573

We know what We Are Talking About When
It Comes to Dogs and Dog Foods. In Fact
We Have . . .

37 VARIETIES OF DOG FOOD
RIGHT IN OUR STORE

SARGENT'S DOG REMEDIES PULVER DOG AND CAT SUPPLIES
LEATHER-CRAFT COLLARS AND LEASHES

Top Quality KELLOGG FEEDS
PRATT'S INSECTICIDES **PRATT'S TONICS**
POULTRY FEEDERS

There Is No Price Increase in Feeding Equipment

VIGORO **PLANT FOOD** **TOL-E-GRO**

"Everything From Parakeet Seed
To Hay By The Ton

— WE DELIVER —

Can You Stop?



**GET YOUR FORD
BRAKES RELINED
Now**

**JUST
\$12.95**

INCLUDING PARTS AND LABOR
(hydraulic brakes only)

Offer good until August 31st Only!

DRIVE A SAFE CAR • DRIVE SAFELY AND SAVE LIVES!

SMITH-BERLING COMPANY

31506 GRAND RIVER at ORCHARD LAKE ROAD
PHONE 2690

Detroit Edison

Today
**See Your
DEALER**

**It's a Must
in Any Modern
Kitchen!**

**AN ELECTRIC
FREEZER GIVES YOU
EXTRA
CONVENIENCE**

Step to your freezer instead
of the stove. Enjoy straw-
berries in January... golden
corn in February. It's easy
and economical, too.