

Correct Fuse Essential To Efficient Electric Motor

An expensive electric motor may be ruined if you replace burned-out time-delay fuses with regular fuses, warns Michigan State College agricultural engineers. They suggest that you keep an extra supply of these delayed-action, motor-protection fuses on hand.

A regular fuse may be large enough to start the motor but too large to "blow" when the motor is overloaded. A burned-out motor may result.

Disease can often cause abortions in a dairy herd, so get a diagnosis from your veterinarian before you blame the abortion on an injury.

THIS CRISP HOMEY EXTERIOR SHELTERS

5 Wonderful Rooms!



DESIGN NO. 3141

ALL the wonderful features of this modified rambler, the newest addition to our ever-growing Weyerhaeuser 4-Square Home Building Service, are reserved for you.

A large, cheerful living room, with its great wall of windows, commands a full view of rear lawns and gardens. The efficient kitchen has welcome dinette space. The bedrooms are placed so as to assure privacy and quiet.

Come in and see this new design . . . for it must be seen to appreciate its unusual values.

Scores of Other Designs

Today there are over a hundred modern designs in our Service available for your study and use without charge. You will find, in this wide variety of styles and sizes, a home to meet your needs. Blueprints are available for all designs.

FARMINGTON LUMBER & COAL CO.

32800 Grand River Phone 0020

SPECIAL ELECTION

To the Qualified Electors:

NOTICE IS HEREBY GIVEN: That a Special Election will be held in the TOWNSHIP OF FARMINGTON County of Oakland, State of Michigan, on

FEBRUARY 18, 1952

At the place in each of the several Wards or Precincts of said Township as indicated below: viz:

Precinct No. 1—Farmington Town Hall

Precinct No. 2—Odd Fellow Hall 20911 Inkster Road

PURPOSE:
ZONING ORDINANCE

Notice Relative to Opening and Closing of the Polls

ELECTION LAW, REVISION OF 1943

(3093) Section 1. On the day of any election the polls shall be opened at 7 o'clock in the forenoon, and shall be continued open until 8 o'clock in the afternoon and no longer. Every qualified elector present and in line at the polls at the hour prescribed for the closing thereof shall be allowed to vote.

THE POLLS of said election will be open at 7 o'clock a.m. and will remain open until 8 o'clock p.m. of said day of election.

HARRY N. McCRACKEN, Clerk

Feb. 7 - 14

FARM NEWS

Sawdust Makes Cattle Bedding

Dairymen who have access to a supply of shavings or sawdust will find that they make an excellent bedding material for the herd, according to word from Michigan State College's Upper Peninsula Experiment Station at Chatham.

In northern Michigan supplies of shavings are naturally easy to get. However, dairymen in many other sections of the state may be able to locate a good supply at a nearby sawmill.

Shavings used as bedding or sawdust under straw make a warm, absorbent bed for the dairy herd.

The U. P. agricultural specialists say that some farmers think that sawdust or shavings will have a harmful effect on the soil when the manure is later applied to fields. This, they point out, is not true.

Arthur Wolcott, soils and crops researcher at the U. P. Station, says that under controlled conditions, mixing sawdust with soil, only one to two per cent of nitrogen need be added to counteract the effect of sawdust.

If the dairymen used two tons of sawdust per cow during the winter and the cow produced five tons of manure (which contains ten pounds of nitrogen per ton), this would provide one and one-quarter per cent nitrogen. This would be adequate under controlled conditions to counteract any possible ill effects to the soil caused by the sawdust.

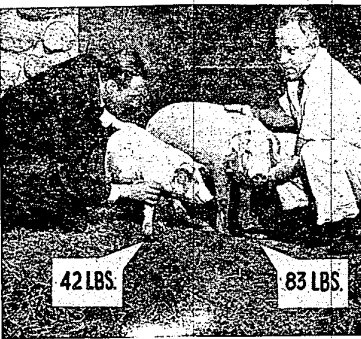
The savings in liquid manure in most cases would offset any disadvantages.

Laying Hens Need Lots Of Water, Not Ice

Laying hens need lots of water in their business but they prefer it in liquid form, not ice, William A. Boyd, extension poultryman at Michigan State College, said that a few changes can make a water system more effective in winter.

If water freezes in your laying house, Auld suggests using a galvanized metal box with a 50-watt bulb placed underneath the water pan. That will give off enough heat to keep water from freezing in the house and is inexpensive to make.

A fully automatic system can be made with drain pipes, float valves and heating cable. Poultry raisers can save themselves trouble, time and money if they check with their power company farm service man for pointers on proper installation.

Britisher Amazed At 'Miracle Drug' Pigs

Chapman Pincher (left), science editor of the London Daily Express, recently visited Lederle Laboratories at Pearl River, N. Y., and got a firsthand view of what the American farmer is doing with the antibiotic feed supplements to increase the nation's pork supply.

It is obvious Pincher needed no tape measure. Both these pigs are from the same litter and received the same basal diet. The only difference was that the larger pig also received a supplement containing aureomycin and vitamin B₁₂. While here, Pincher also observed similar growth-promoting results in poultry.

Bulk Handling, Mechanical Drying Of Onions Increasing In Michigan

Interest in bulk handling and mechanical drying of onions is increasing rapidly in Michigan. James Boyd, research agricultural engineer at Michigan State College, told a Farmers' Week audience.

Labor supplies are tight and growing in cost, he pointed out. Mechanization is the answer to many problems facing onion growers today.

Boyd cited recent research at the Michigan Agricultural Experiment Station to support his contentions. In a storage building located at the muck experimental farm near East Lansing, a series of bins were installed to study use of procedures for getting onions from field to bin. Onions were harvested into crates and poured into an elevator similar to those used for ear corn. Speed was reduced to one-half that of an ear corn elevator.

The elevator carried the onions to a conveyor near the ceiling which moved them horizontally to the proper bin. The conveyor was made of one-inch boards with two four-inch canvas belts. The onions were deflected off the conveyor with a 1 by 3 inch board set at an angle on the conveyor deck. A canvas funnel took them to the bin.

Whenever a bin was filled with onions, a sample was also stored outside in a crate similar to storage done on most farms.

The first two years of work showed onions could be stored in bins with less shrinkage than with crate storage. Bruising trouble in bin storage was negligible. Researchers found that small onions could be dropped as much as five to seven feet without significant spoiling. Larger onions could not be dropped more than five feet if bruising was to be kept at a minimum.

Mechanical drying tests also yielded favorable results, Boyd stated.

Michigan Leads Nation In Farm Electrification

Michigan leads the nation in percentage of farms with electricity according to latest figures recently released by the rural electrification administration of the U. S. Department of Agriculture, reported this week by Michigan State College agricultural engineers.

According to the statistics quoted, 87.7 of the farms are now electrified in the Wolverine State. Iowa ranks second with 85.8 per cent and Indiana third with 85.5 per cent of the farms electrified. Figures are based on complete but preliminary 1950 census information.

Milker Speed-Up May Cause Udder Injury

Some dairymen have the mistaken idea that the faster they run their milking machines, the quicker the cows are milked.

Michigan State College extension dairy specialists say that if milking time is to be reduced the operator, not the machine, should be speeded up. A speeded up machine may get less milk and give more chance for injury to the udder.

The manufacturer's recommendations should be followed for milking machine adjustment.

BOSSY MAY GET MORE PHOSPHORUS THAN SHE NEEDS

Some Michigan dairy cows may be getting more phosphorus than they need. Feeding phosphorus above the cow's actual needs won't hurt her but it does cost money — probably about \$1.50 a year.

A recent survey made by the dairy extension department at Michigan State College, and reported by extension dairyman J. G. Hays, indicates that about half of the leading dairy farmers feed their cows steamed bone meal to supply phosphorus.

Chances are that not all these herds need bone meal because good dairymen feed legume hay which is a fair source of phosphorus. They feed corn and oats which equal alfalfa in phosphorus content. They feed soybean oil meal which runs three-fourths of a pound of phosphorus to a hundred pounds, or cottonseed meal which runs a pound a hundred, or bran which runs a pound and a quarter a hundred.

Dr. C. F. Huffman, dairy researcher at the college, says that cows probably don't need extra phosphorus if they are fed mainly alfalfa or roughage. The same thing holds true if the grain ration contains at least one-sixth of a concentrate like soybean oil meal.

One of the best ways to supply phosphorus if you think it is needed is to let the cow help herself to a mixture of three parts of salt and one part of bone meal.

Hear **CECIL BROWN** report from overseas

AROUND THE WORLD

Brought to you by STATE FARM MUTUAL AUTOMOBILE INSURANCE COMPANY

Radio Station CKLW SATURDAY — 7:55 a.m. SUNDAY — 6:55 p.m.

M. J. Brown LOCAL AGENT 33636 Grand River Phone Farmington 0757

Don't Neglect This Danger Spot!

Your car muffler does more than just reduce engine noise. It plays a vital part in channeling poisonous gases away from the car and its occupants. Regardless of the trouble, we are trained and equipped to give you prompt, efficient auto repair service — always!

DRIVE IN NOW FOR A MOTOR CHECK-UP!

WE SERVICE **DYNA-FLOW — HYDRA-MATIC FLUID DRIVE**

We Give You Complete Brake Service

We Rebuild Old Engines Install New Engines Using Only AUTHORIZED Manufacturers' Parts For All Makes of Cars

PHONE 0330 **LAYN'S GARAGE** GENERAL AUTO REPAIR 33712 Grand River

Ceresota ENRICHED FLOUR

Comes to us direct from Minneapolis in carload lots. You can always be sure of freshness and quality when you order Ceresota Enriched flour from us.

FARMINGTON MILLS is the only place in town where you can buy a high grade flour that is NOT BLEACHED.

Get Ceresota Enriched Flour At FARMINGTON MILLS Today

MILLERS OF FLOUR AND FEED FOR OVER 50 YEARS

FARMINGTON MILLS ESTABLISHED 1895 33408 STATE ST. DELICIOUS FLOUR FARMINGTON — PHONE 0076

PLUMBING and HEATING

Complete Line of Plumbing and Heating Fixtures and Supplies

NEW • REMODELING • REPAIR

GLENN C. LONG Licensed Master Plumber 411 East Baseline Road Phone Northville 1128

Engelstolz Boarding Kennels

MODERN UP-TO-DATE KENNELS

• ALL BREEDS •

28011 ROLLCREST Off 12 Mile — Between Middlebelt and Orchard Lake Road

• MEAT FEEDING TWICE A DAY • DOBERMANS AT STUD

Phone Mayfair 6-2872 MIKE and HELEN BELLO

INTERNATIONAL HARVESTER Freezers

NOW IS THE TIME TO BUY!

MODEL 111 — stores 388 lbs. of food

See This Beautiful Freezer for Only \$290.00 7 FT. SIZE

EVERETT IMPLEMENT CO. "YOUR INTERNATIONAL HARVESTER DEALER" 31200 Grand River at Orchard Lake Road Phone 1515

Any way you figure it . . . **WATER ELECTRIC HEATERS** are finest for family use

Costs only pennies a day to operate on special water heater rate. Try it. You'll like it.

No soot! No smoke! No fumes! Put it in the kitchen if you wish. Clean as can be.

Finest hot water service this money can buy . . . just install and forget it . . . for years and years.

No charge for installation in most residences. Go electric . . . there's a wonderful difference!

IT ALL ADDS UP... the finest WATER HEATER you can buy

SEE YOUR DEALER or Detroit Edison