

2 WEEKS ONLY!



Give Love...Give Professional Portraits

Bring in your family and have a large wall portrait made at special savings.

Large Elegant	Reg. \$20 in Sepia Tapestry	\$9.95
11 x 14" Size:	Reg. \$50 in Life-Color	\$19.95

MONTGOMERY WARD

Professional Portrait Studio 1st Floor 427-1600

GOOD HEARING IS A VALUABLE ASSET!

Are you Neglecting Your Hearing?

IF SO... VISIT US... TODAY



JIM COFFRON
Certified Hearing Aid
Audiologist
License No. 0129

audivox HEARING AIDS

Licensed under patents of American Telephone and Telegraph Company, Western Electric Company, Inc., and Bell Telephone Laboratories, Inc. Stop in or phone for a test in our new SOUND ROOM. Chances are, greater happiness through better hearing waits for you. Every type of aid is here, plus the experience, the desire to help, and the honesty to advise you forthrightly.



29837 Plymouth Rd.

- Livonia

in the Service Arcade, Wonderland Center.

Hours Daily 9:30 a.m. - 5 p.m. 261-2630 Mon. - Fri. 9:30 a.m. - 9 p.m.

Wonderland Center

PLYMOUTH at MIDDLEBELT

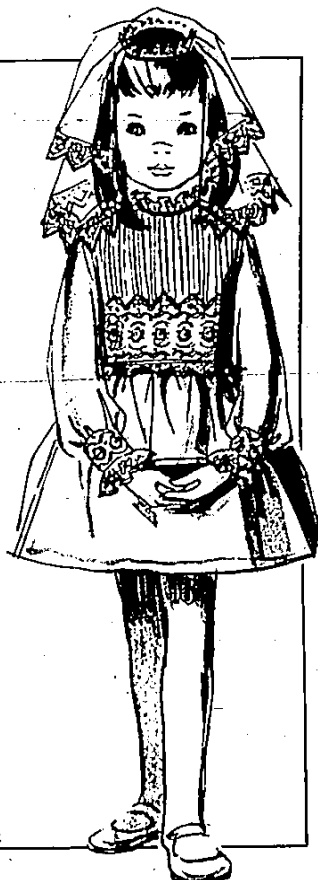
- Open 7 Days a week
- 65 Stores and Services to Serve YOU
- There's something for everyone at Wonderland



It's her special day...

let us help you select her communion dress from our collection.

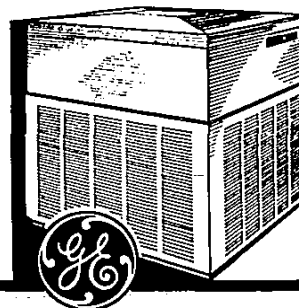
Girls sizes 6-10
Priced \$11 to \$20
Veils: \$5 to \$11



Richards
BOYS and GIRLS
Wear

WONDERLAND CENTER

\$40⁰⁰ CASH REFUND



...direct from General Electric with the purchase of a 1973 Deluxe central air conditioner

Special refund offer to homeowners with existing warm air heating systems who buy early. GE Deluxe unit features a Climatuff™ compressor and an automatic two-speed fan motor for your desired outdoor sound level. Get ready for summer now, and earn your big refund direct from General Electric! Capacity range of 24,000-60,000 BTUH. 1973 TA-RIC Models only. Offer valid from March 12 through April 30, 1973.

This offer is not good if purchase is made on a home improvement installation contract.

30073 Plymouth Rd.
Wonderland Center

**MOORE
FURNACE CO.** 421-1840