

GREEN GRASS COSTS NO MORE

Than doing it yourself and
WE DO THE WORK!

Jackson Landscape's Lawn Spraying men are professionals you can depend upon.

"WE GUARANTEE OUR WORK!"

OUR LAWN SPRAYING PROGRAM

MONTH	TYPE OF APPLICATION	MONTH	TYPE OF APPLICATION
April	Crabgrass Pre-Emergent & a well balanced fertilizer	Sept.	Dandelion and broadleaf weed control combined with fertilizer
May	Dandelion and broadleaf weed control combined with fertilizer	Oct. Nov.	Fall feedings. All applications of fertilizer at this time contain special root feeding which are so necessary to a healthy lawn
August	Applications of our own scientifically formulated fertilizer		

With our **FREE Lawn Survey** you will know exactly what your lawn needs and exactly what it will cost. Call now for your free lawn survey

349-4950

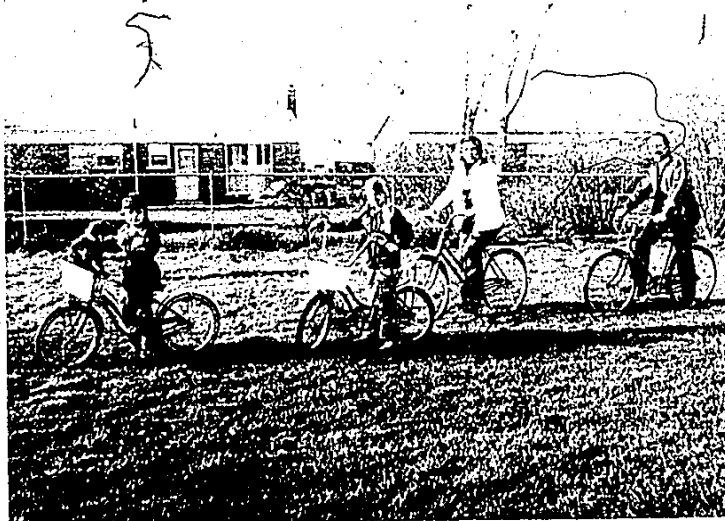


**LANDSCAPE
& NURSERY SALES**

349-4950

42350 GRAND RIVER, NOVI

Livonia Family Enjoys Nightly Bicycle Rides



A ROW OF REAMS on bicycles is a common sight in their Livonia neighborhood. Lowell Reams is threatening to replace his three-speed model with a 10-speed when the family moves to Plymouth. "You need extra speeds for that country living." (Evert photo)

Trade the
Summer of '72
For **Snapper '73**
(BIG TRADE-IN ALLOWANCE)



No more raking, because the Snapper vacuum cleans your lawn as you mow.

- 1 Year Warranty PARTS & LABOR
- PICK-UP AND DELIVERY ON TUNE-UPS

**HAIG'S
MOWER
SERVICE**

28879 Greenfield
567-3850

309 W. 7 Mi.
(E. of Woodward)
893-0909

Talk to Metro about ... Auto Loans

A METRO-MATIC AUTO LOAN SAVES YOU MONEY

(With one fourth down payment)

36 MONTHLY PAYMENTS

Amount Financed	Metro Matic Loan *		Conventional Auto Loan **		YOU SAVE AT METRO
	Monthly Payments	Total of Payments	Monthly Payments	Total of Payments	Total Amount Saved
\$1,500	\$47.29	\$1702.44	\$49.17	\$1770.12	\$67.68
\$2,000	63.06	2270.16	65.56	2360.16	90.00
\$2,500	78.82	2837.52	81.94	2949.84	112.32
\$3,000	94.58	3404.88	98.33	3539.88	135.00
\$3,500	110.35	3972.60	114.72	4129.92	157.32
\$4,000	126.11	4539.96	131.11	4719.96	180.00

*Annual percentage rate 8.41%

**Annual percentage rate 11.08%



**Metropolitan
Bank
farmington**

MAIN OFFICE
33205 Grand River

QUAKERTOWN
27500 Farmington Road

REDFORD OFFICE
25719 Grand River



FOR
**MINI-HOMES
TRAILERS
5th WHEELS
CAMPER
COVERS**

by

**FRANKLIN • TROPHY
REAL-LITE • PHOENIX
L'IL DARLIN • PIONEER**

**17'
TRAILER**

Refrigerator, heat, toilet
6 Sleeper

\$1995

CANNOT BE
UNDERSOLD

RENTAL RESERVATIONS
NOW BEING TAKEN
FOR MOTOR HOMES & TRAILERS
LEONARD'S
8 MILE ROAD
NEAR MIDDLEBELT
477-6616