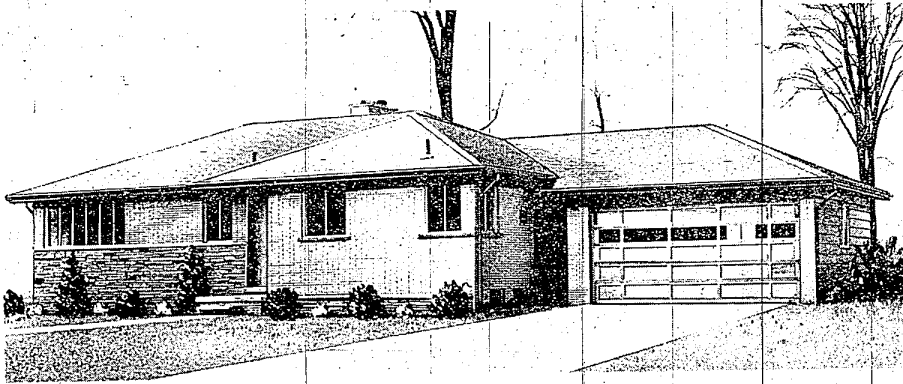


The Wolfe Organization Proudly Announces: WARNER FARM in Farmington

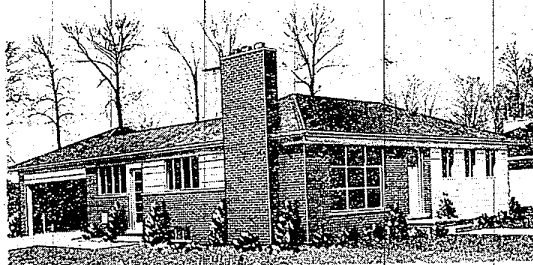


TOWN AND COUNTRY — This spacious three-bedroom model on a large lot includes a finished recreation room with asphalt tile floor, basement fireplace and lavatory, large living room with one wall paneled in Philippine mahogany, marble window sills, sliding shower door, ceramic tile bath, aluminum windows, complete with storms and screens, garbage disposal, outdoor patio, two car garage . . . and dozens of other custom features. Price including all features listed . . . \$26,500.*

The "Town and Country" has been completely furnished for comfortable living by the R. L. Pope Furniture Co., 14751 W. Seven Mile Road.

THE SQUIRE — a knotty pine den, breezeway between house and garage, and many other features included in the "Town and Country" model are to be found in this lovely two-bedroom home. Price including these features . . . \$23,500.*

*These homes can be duplicated without extras at a lower price.



5 Models Now Open . . . One Completely Furnished

Out where the living is Pleasant . . . and the children have plenty of room to roam, you'll find a new community of custom ranch homes. Warner Farm, planned by Harry E. Wolfe, is designed to bring you the most in satisfaction for the home-dollars you have to spend. You can select from five basic models which can be individualized to your needs and desires — or you can choose from many plans available in the Wolfe Sales Office. Each home in Warner Farm will be different from its neighbors. In such an individual neighborhood, your home will always be in demand, and will always command top prices.

THESE QUALITY FEATURES . . .

Attractive ranch homes in Warner Farm will be situated on large lots. The many features of the community include paved streets, city water, sewers, street lighting, only three blocks from Farmington, and close to schools. Careful planning has gone into the homes, too! Among the many convenient extras you'll find in the five models are attached garages, sliding closet doors, disposals, glass tub enclosures, unusual floor plans designed to save steps, heat and stain resistant sink and counter tops, divided basements, copper plumbing and hundreds of basic construction features of material and workmanship found only in custom built homes.

SALESMEN TRAINED TO HELP . . .

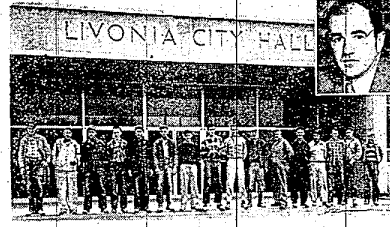
Prospective home owners will find that the Harry S. Wolfe sales staff has the ability to interpret and find their particular home requirements. Each of the representatives on the Wolfe sales staff must have a thorough background and experience in the building industry. Perhaps for the first time in the Northwest area a group of thoroughly trained building salesmen has been assembled that can make "on-the-spot" changes in floor plans, exterior finishes, and features, and provide the buyer with an almost immediate price quotation. For the first time, Metropolitan Detroit buyers can request changes in basic home design and know exactly whether their changes will fit their budget requirements. In addition, Wolfe representatives are skilled in arranging and handling mortgages, and in many cases initiate and conclude these arrangements.

A CUSTOM COMMUNITY . . .

You'll find no "dull row-housing" in Warner Farm. The interesting variety of architecture is part of the community's planned attractiveness. Both an architect and a professional interior color-consultant work in close association with the Wolfe organization — they are available to help you "customize" your home according to your needs. Besides the 5 basic models, there are many plans to choose from.



The Wolfe Sales Organization. Robert Follett, Sales Manager, is at left of top row. William Gufrut is third from left, Robert Carnell, Joe Nebriek. Bottom row from left to right: Harry Bottomley, Pete Pierce, Viola Manning, William Pankratz, Bea Clancy, Larry Bilsmer, Jim Richards.



Members of the Wolfe Commercial Construction Co. in front of the Livonia City Hall. Eugene Versillo (inset at right) is construction superintendent. From left across: John Persha, Art Green, Robert Swales, Jack Grabowski, George Persha, D. Salvaggio, Douglas Verville, Melvin Rude, Mervin Meyer, Edward Wolmark, Henry Cook, Gus Grabowski, Francis Keller, Walter Lutz, Tony Tillger, Elwin Clark.



HARRY E. WOLFE



HARRY S. WOLFE

DIRECTIONS: Three blocks east of Farmington Road, two blocks south of Grand River.

Models Open Daily and Sunday 10:30 a.m. to 8:30 p.m.



The residential construction staff. Top row from left: Wilfred Guy, Don Cardwell, Ed Mattioli, Construction Superintendent, William Mans. Bottom row from left: Frank Traverso, Wyatt White, Lloyd Wilkie, Robert Harward, Alfred A. Johnson, Walter White, George W. Sandau, El Roy Juve.



The Wolfe office staff. Top row from left: Margaret Schmidt, Edith H. Kaufman, Arlene Teich. Bottom row from left: Gladys Smith, Claudia Burns.



Will Build to Suit in the Growing Suburban Northwest

Offices: 22741 Mayfield Ave., Farmington, Mich.
Phone: Farmington 2232