

MSC EXHIBITS OFFER PROFIT FOR FARMERS

"Strengthening Michigan Agriculture" is an apt theme for Michigan State College exhibits during Farmers' Week, next Monday through Friday, emphasizes Herbert R. Pellegrino, chairman of the exhibits committee.

First-hand information and demonstrations will help thousands of visitors improve their own farming operations, he explains. The football stadium concourses alone will have exhibits of 26 departments.

Visitors can see the home of yesterday—set up by the museum—with home furnishings and weaving equipment of early days. "Do it yourself" will be the subject of wood-working displays, including boat-building. Landscapers will show new flowers, shrubs and trees, and help strengthen agricultural home life with beauty and

relaxation. Crop-drying equipment, ventilation fans, garden tools; seed displays, a grain and potato show and special crop exhibits will be among the farm exhibits. There will be exhibits on corn hybrids, use of specific gravity in separating potatoes for boiling and baking, weed control and pasture development.

Management, use of water resources, care of shade trees and detail on the life of our gaudy Oriental import — the pheasant — all will be shown. Insecticides, eight ways to get more dollars from livestock, bulk handling of milk and ways to poultry profits will be other features.

Animal exhibits will include small animals like mink and rabbits and there will be a machine that sorts eggs by color.

FARM NEWS

Welch Elected To Farm Board

Henry T. Welch of Ionia has been elected to the Farm Credit Board of St. Paul by the 176 national farm loan associations in Michigan, Wisconsin, Minnesota and North Dakota.

As a member of the seven-man Farm Credit Board, Mr. Welch will also serve as director of the Federal Land Bank, the Federal Intermediate Credit Bank, the Production Credit Corporation, and the Bank for Cooperatives, the units making up the Farm Credit Administration of St. Paul.

In making the announcement, Robert J. Barry, general agent and general counsel of the Seventh Farm Credit district, stated that one of the methods of increased farmer participation and control of the Farm Credit System provided for by the Farm Credit Act of 1933 was election of additional directors by the farmer borrowers in place of appointed members whose terms expire. With Mr. Welch's election, four of the seven members of the Farm Credit Board of St. Paul are elected members.

Mr. Welch was born on a farm and has been actively engaged in farming, stock raising, and dairy operations all his life. He has previously served on the Farm Credit Board of St. Paul as an appointed member.

Mr. Welch's term is for three years and began January 1.

Expect 35,000 Persons During 'Farmers' Week'

All the people in the city of Port Huron visited Michigan State College in one week, the campus would be about as crowded as it will be next week for Farmers' Week, February 1-5.

Ralph Tenney, short course director who has supervised Farmers' Week preparations for many years, expects more than 35,000 people at this 39th annual event. Thirty more than Sault Ste. Marie and Alpena combined, more than Iron Mountain Harbor and St. Ignace combined, more than Mt. Clemens and Livonia combined, and almost as many as Alpena, Cadillac and Traverse City combined.

Some housing will be available on campus and the campus housing office, in the college administration building, has lists of East Lansing and Lansing homes with rooms for rent. Many hotels and motels are available but reservations should be made early.

Whichever Your "List" — A Few Lists of the Classified Pages Will Get Results, Phone 3000 • 3001



ROOT OF THE TROUBLE — Joyce Chandler, of Columbia, Mo., were taken from fields where the Missouri Farmers Association is conducting experiments in the use of soil insecticides. The stalk on the left suffered rootworm damage, while the stalk on the right, from a row treated with aldrin, had a healthy root system and no rootworm damage.

Feed Molasses In Grain, Hay

Judging from the number of inquiries by telephone and letters to the Michigan State College dairy department on the feeding of molasses to cows, there's a lot of interest in the subject.

Here's the story on molasses feeding from MSC extension Dairyman J. O. Hays: Molasses is heavy, weighing about 12 pounds to the gallon. It's a carbohydrate, more similar to corn than any other cow feed in feeding value. Six and a half gallons of molasses is equal to one bushel of ground shelled corn.

That would mean that a ton of molasses — or 171 gallons — is equal to about 1,500 pounds of ground shelled corn. Best molasses is quoted at about \$18 a ton in lots. And corn is quoted at about \$5.5 a ton.

Hays suggests that molasses is somewhat of a nuisance to feed. It's added to grain when grinding or mixing — that's the easiest way to feed it. Molasses should not be over 20 per cent of the total mix. Or it can be poured on grain in the feed manger — a cupful twice a day is equal to about two pounds of corn.

Molasses also can be spread on roughage to induce cows to eat low quality hay. This may not be a good idea, Hays noted, but if good roughage is not available, molasses may be a big help. Many cattlemen believe molasses to be good for a cow's health. It makes the animal's coat shine. Molasses is easier to feed than the wet kind, Hays says, but has no more feeding value, pound for pound, than liquid.

As for self-feeding molasses, it's of doubtful value for dairy cattle when the amount they eat must be controlled. If it is self-fed, the cows should be exposed to it gradually. And the amount placed before cows at one time should be no more than that recommended.

FARM CALENDAR OF EVENTS

February 1-5, 39th Farmers' Week, Michigan State College; and will include:

February 1, Michigan Purebred Dairy Cattle Association meeting and meetings of Yorkshire Breeders, Brown Swiss Cattle Breeders, Guernsey Breeders, Holstein-Friesian, Jersey Cattle Club, Milk and Shorthorn Association, Red Danish Cattle Association.

February 3, 19th annual breed sale, Michigan Sheep Breeders Association, Livestock Pavilion.

February 3, Short Course Alumni Association banquet, Union.

February 3, Michigan Swine Breeders Association annual meeting, Union.

February 3, Annual meetings of Michigan Beef Cattle Association, Michigan Hereford Association, Michigan Aberdeen Angus Breeder Association, Michigan Shorthorn Breeders Association, Michigan Filled Hereford Breeders Association and Michigan Red Poll Cattle Breeders Association, all to be held in the Union.

February 3-4, Michigan Beekeepers Association Annual Meeting, Union.

February 4, Michigan Farm Managers and Rural Appraisers' meeting.

February 4, Michigan Lamb Feeders' Association annual meeting, Union.

February 4, Michigan Chapter, Soil Conservation Society of America.

February 4, Michigan Cooperative Wool Marketing Association, Union.

February 4, Michigan Flying Farmers' luncheon and program, Union.

The Fabricast Division of General Motors uses more than 20 million pounds of aluminum a year in the production of castings.

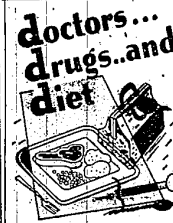
Zindel Named To Direct Poultrymen At College

Howard C. Zindel, 38, extension poultryman at Michigan State College for the past eight years, is the new head of the MSC poultry department. He succeeds Carl O. Gard, who retired on December 1.

Zindel is widely known for his work with poultry producers and processors throughout Michigan. He received his B.S. and M.S. degrees in poultry from Michigan State College and recently completed work toward a doctor of education degree.

During his undergraduate days, he was a member of the Spartan football team and in recent years has served as a member of the school's athletic council.

John Clappison Sells Insurance



If you are overweight... or underweight... it's just common sense to visit your Doctor for professional advice. Your Doctor, with the help of diet, and in some instances a prescription, can help you gain good health. When he prescribes, bring your prescription here for accurate compounding.

OAK PHARMACY
33401 Grand River Phone 6100

Plan To Show 'Bowl' Game Wednesday at MSC

Sound motion pictures in color of the Michigan State College football trip to Pasadena, California, of the Tournament of Roses display and of the Rose Bowl football game won by the Spartans of New Year's Day will be a special Farmers' Week attraction.

They will be shown from 4:30 to 6:00 p.m. Wednesday, February 3, at the college auditorium.

High analysis fertilizers, which require less bag litter, are available to farmers who order early, stresses Paul J. Rood, MSC soil scientist.

TIRES We Sell CORDUROY

We Will PUNCTURE-PROOF YOUR TIRES For Less Than \$2.00 Each

TEXACO Service Station
S. H. STEVENS, Owner
28420 Grand River Phone Farm. 0001



ANSWERS YOUR QUESTIONS

Q. What is the best treatment for cecal coccidiosis?

A. There are many satisfactory treatments -- one of the best controls is Dr. Salsbury's Sulquin. Use it in liquid or soluble powder, in drinking water or mash. It's quick and easy, and it controls both cecal and intestinal coccidiosis. Another good control for cecal "coxy" is Dr. Salsbury's Ren-O-Sal. Protect your profit with Sulquin or Ren-O-Sal.

BE ON THE ALERT! When You Need Poultry Medicines Ask For...

DR. SALSBUURY'S



ANSWERS YOUR QUESTIONS

Q. Is it too late to vaccinate birds against Newcastle?

A. It's never too late to vaccinate -- till disease breaks out. You can still vaccinate for Newcastle, fowl pox, laryngotracheitis. Choose Dr. Salsbury's Vaccines, because they're "Vaccized" to help insure maximum strength. Also, for your protection they're purity tested. Get profit insurance! With Dr. Salsbury's Vaccines -- now!

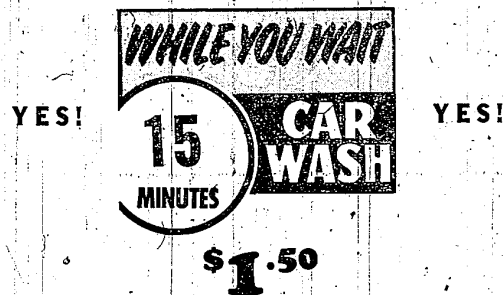
BE ON THE ALERT! When You Need Poultry Medicines Ask For...

DR. SALSBUURY'S



Keep The SALT off Your Car USE OUR

WASHMOBILE SERVICE



The ONLY ONE in Farmington

BERLING-McHUGH, INC.

FORD SALES AND SERVICE

30711 Grand River Ave. Farmington, Mich. Phones 2690 - 1 - 2

Weather Report

Ice and Snow... BE PREPARED

Calcium Chloride

Carry Some In Your Car

100 lbs.

\$2.25

25 lbs.

90c

Sand

20c a bu.

FARMINGTON LUMBER & COAL CO.

32800 Grand River in NOVI Phone 0020
43755 Grand River Phone Northville 308

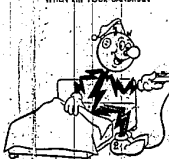


LIGHT, WARM AND ALWAYS WELCOME...

an AUTOMATIC BED COVERING

- They're feather light—and one to a bed's all that's needed!
- It's old fashioned to smother under a mule-numbing pile of bedding.
- Be feather warm—automatically! Dial the warmth you want, and there it stays, regardless of room or outside temperatures.

"SLEEPING IS A DREAM" WHEN ON YOUR SANDMAN



SEE YOUR DEALER or Detroit Edison

15 TRUCKS "The Fleet That Service Built"

IS READY DAY OR NIGHT TO MEET YOUR EVERY EMERGENCY!

Authorized Timken Sales and Service



SALES

PLUMBING • HEATING • OIL, GAS & COAL BURNERS SERVICE

Licensed Master Plumber and Unlimited Heating Engineer

John M. Campbell, Inc.

Member Wayne County and National Association of Plumbing Contractors

38630 PLYMOUTH ROAD

Phone Days Plymouth 1504

Phone Nights, Sundays and Holidays Livonia 2073