

Expand Your Living-- Create A New Patio

Nothing increases the pleasure of outdoor living as much as a patio.

Regardless of the size or location of your home, a patio will provide an extension of your living area and a variety of activities that will more than compensate for the initial investment.

Proper location is the key to enjoyment. Consider the relationship of the patio site to the living areas of the house, the rest of the outdoor area, the street, and the afternoon sunlight.

IF YOU CAN BUILD IT adjacent to the living room or dining room, it will provide an extension of lounging, dining, and entertaining areas, without creating the potential embarrassment of having guests pass through the kitchen or other working areas.

Although it should ideally be separated from other sections of the yard, where children may be playing while you're entertaining friends over cocktails, it should be an integral part of the landscaping, not a chunk out of an otherwise-useful setting.

If you must locate your patio close to the street, make thorough plans to ensure maximum privacy and quiet. A row of small trees, a high shrub, or an attractive fence enhanced by ground plants or climbers may be the answer.

You will want to test the site for sunlight and heat at various times of the day before beginning construction. An area that is shaded from the summer sun but that traps the winter sun is preferable. Shade trees should be placed according to the time of day you will be using the patio the most.

IN PLANTING FOR SHADE, don't forget the need for a breeze on hot summer nights. Or is your problem one of too much breeze? If so, the same type of shields used for the sun can be used to protect you from the wind.

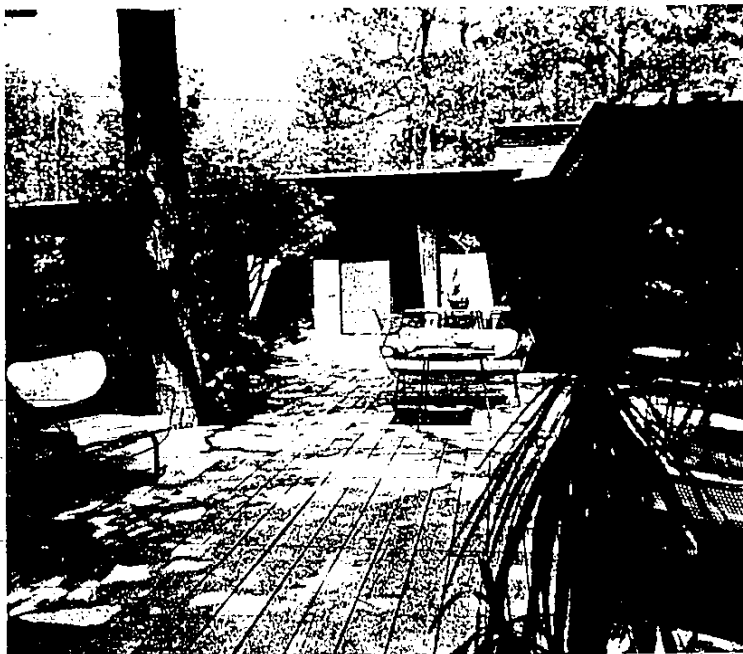
The ground cover should be both attractive and easy to care for. You might want to use brick, exposed aggregate, flagstone, ceramic tile, colored asphalt, or a wood deck. Used brick, which is inexpensive and easily available, is always attractive. You can lay it yourself, using sand and cement between the bricks.

If an entrance to the house opens onto the patio, make the patio surface the same level as the doorway, to facilitate carrying food or drinks in and out.

BE IMAGINATIVE in creating the patio design. Curving edges will add interest to your landscaping. What about leaving a hole in the surface for a tree or a shrub, if your patio is large? Or you may want to plan portable planters that can be rolled out of the way for dances and cocktail parties.

In planning trees for shade, be sure to avoid ones that drop flowers, fruit, or seeds onto the patio. Be sure to include room for some low shrubs and flowers in the vicinity. Potted geraniums, petunias, begonias, or heliotrope can be placed in corners or along edges of the patio to add color and to help blend the patio with the rest of the yard.

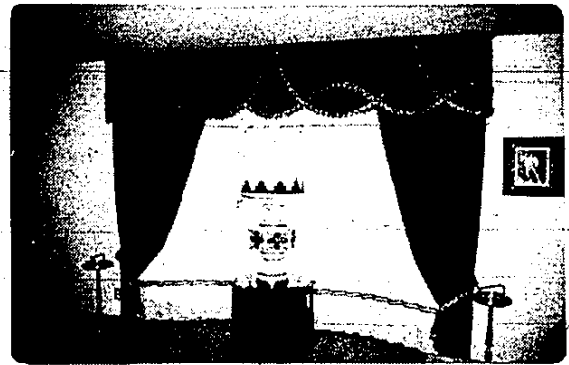
Whatever design you decide upon, think it through very carefully before beginning construction. Your patio will be a source of constant pleasure to your family for the lifetime of your home.



BUILD A PATIO that incorporates existing trees, add potted plants and flowers and you have another room for entertaining and relaxation.



Jaylis® DRAPERIES



Jaylis® enhances any decor regardless of style
Jaylis® defuses light without darkening the room
Jaylis® resists fading, protects rugs & furniture from fading

For Additional Information & Brochure Write:

Trends in Drapery Fashion

27812 SHIAWASSEE

Farmington, Michigan 48024

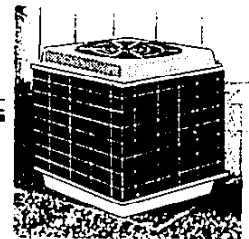
or phone (313) 477-8224



\$50 OFF

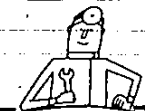
ON THE FAMOUS

COOL CUBE



CENTRAL AIR CONDITIONER

Save a cool \$50.00 now on the amazing new Cool Cube that is installed economically to your existing forced air furnace for lowest possible installation cost. Call the Day & Night Weather Doctor listed below and have a happy summer.



G & W
HEATING & COOLING
582-2261

PLYMOUTH OFFICE
459-0303

day & night
Weather Doctor