



ALL IN A WEEK-END, you can build an exciting outdoor living area. Place three-foot modules of two by four-inch wood in alternating directions over bed of sand and gravel to form parquet-pattern deck. Wood in direct contact with ground should be preservative-treated.

BEDECK YOUR HOME WITH WOODEN DECK

Biggest room of the house for many families can be an outdoor room, simply by adding a wood deck to side or back yard, plus a privacy screen or sun shade if needed.

Happy new experiences await the family with an added deck, such as outdoor dining and entertaining, sunning or just relaxing with a good book.

A deck of western wood with built-in benches or patio furniture opens the way to discovering the joys of outdoor living in pleasant months, and it dries quickly for a play area between stormy spells.

A DECK FITS almost anywhere, enhancing any site, flat or sloping. It can be placed over a garage or driveway, off a second story or just one step off the ground.

Decks, of course, come in many styles, sizes and shapes. One popular pattern, especially suited for a flat lot, is a parquet deck, with three-foot square sections placed over a bed of gravel and sand.

A 12-foot square version of this

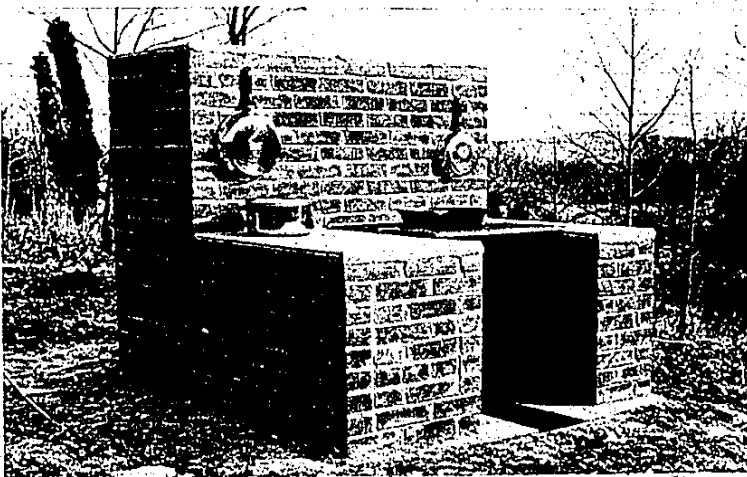
deck can be installed by the home handyman over a weekend. The 16 modules are nailed together in a jig, using 176 three-foot lengths of 2 x 4-inch Douglas fir or western cedar.

The site is excavated to hold three inches of sand over three inches of gravel. The modules are placed in alternate directions in a checkerboard pattern.

WOOD MEMBERS that come in direct contact with the ground should be treated with a preservative for longer life. Galvanized or non-ferrous nails are recommended.

It's also wise to check local building codes when a deck is to be attached to the house, and determining exactly where property lines run could prevent future problems.

For a plans booklet on parquet, hexagonal and raised decks, plus an eight-page color booklet of deck ideas, send 25 cents in coin to Western Wood Products Assn., Dept. 502-13M, Yeon Bldg., Portland, Ore. 97204.



THE PERFECT COMPANION to your deck or patio is an outdoor fireplace. For Fireplace Pattern No. 73, send \$1 cash, check or money order to Observer Newspapers, P.O. Box 2428, Livonia, Michigan, 48151. Make check payable to East-Bild Pattern Co., Inc.

YOU CAN HAVE BETTER COLOR PICTURES WITH A CHANNEL MASTER ANTENNA

MODEL 3663

UHF-VHF ROTOR

TERMS AVAILABLE
We are headquarters for the complete line of famous Channel Master Antennas.
Master Charge • Visa • American Express

DO-IT YOURSELF
for only **79.95**
OR FOR EXPERT INSTALLATION --

Call Us Today
Bill Brown's

MAGNAVOX
SALES & SERVICE
HOME ENTERTAINMENT CENTER

LIVONIA DEARBORN HTS.
31155 Plymouth 22344 Van Born
1 blk. E. of Meridian East of Telegraph

522-9600 565-4600

DANISH INN

BUSINESSMEN LUNCHEONS
Daily Specials

WE INVITE YOU TO JOIN
PAT FLOWERS
AT THE ...

PIANO BAR

RESERVATIONS RECOMMENDED FOR WEEKENDS

DANISH INN
32305 GRAND RIVER
476-5320

Parking Attendant on Duty in the rear

HOURS:
FULL COURSE DINNERS
UNTIL 11 NIGHTLY, WEEKEND
'TIL MIDNIGHT

SANDWICHES AND
HORS D'OEUVRES
'TIL CLOSING

Family CAMPERS Only

WORLD'S ONLY CAMPER COUNTRY CLUB
ONE HOUR FROM DETROIT
YEAR 'ROUND CAMPING

YOU MUST SEE IT TO BELIEVE IT!
Look What Only \$350.00 PER YEAR

Gets You (All items listed below FREE with Membership)

- OVER 1,000 ACRES OF PURE NATURE
- YEAR-ROUND CAMPER STORAGE
- 3 MILES OF LAKE FRONTAGE
- SWIMMING - BOATING - FISHING
- 40x75 LOTS WITH ALL HOOK-UPS
- 9 HOLE GOLF COURSE
- GOLF DRIVING RANGE
- 9 HOLE MINIATURE GOLF COURSE
- THE WORLD'S LARGEST SLIDE & SWINGS
- A MERRY-GO-ROUND FOR THE KIDS
- 1 MILE PAVED GRAND PRIX TRACK
- HORSE STABLE AND RIDING CLUB
- RECREATION CENTER INCLUDING PING PONG AND POOL TABLES
- PENNY ARCADE
- 10 TENNIS COURTS
- 10 BASKETBALL COURTS
- 10 SOFTBALL DIAMONDS & 1 FOOTBALL FIELD
- LARGE RESIDENT POOL
- 80 ACRE AFRICAN NATURE TRAILS
- WINTER SPORTS, SNOWMOBILES, ICE FISHING, SLEIGH RIDES

Greenwood Acres

Take I-94 West to Race Road Exit East of Jackson, follow signs to Greenwood Acres.

Private Camper Country Club

FOR INFORMATION CALL
477-1840, Local
1-517-522-4925
Park Office

Make your reservations now for Memorial Weekend!