

Enterprise Classified Ads Bring Quick Results

# Lake Theatre

420 PONTIAC TRAIL PHONE MAIN 4-2151  
WALLED LAKE

ON OUR NEW PANORAMIC WIDE-VISION SCREEN

Friday and Saturday, May 14, 15  
RANDOLPH SCOTT • LEX BARKER  
"THUNDER OVER THE PLAINS"  
In Color  
MARLA POWERS • STAN FREBURG  
"GERALDINE"

Sun., Mon., Tue., Wed., Thur., May 16, 17, 18, 19, 20

In Cinemascope  
TYRONE POWER • TERRY MOORE  
"KING OF THE KNYBER RIFLES"  
Technicolor

ALWAYS PLENTY OF CONVENIENT PARKING SPACE

## Looking for a Good Place for Your Savings?

If you don't have a savings account at one of Detroit's fine banks or savings associations, get to know First Federal. Seven offices, friendly service, with savings insured to \$10,000. Any amount opens your account.

## FIRST FEDERAL SAVINGS OF DETROIT

GRAND RIVER AT McNICHOLS  
Phone KE 3-6100

**IN YOUR NEIGHBORHOOD**

**FREE PARKING**

**DOWNTOWN HEADQUARTERS**  
Grizwald at Lafayette  
Across from City Hall

Hours:  
Monday thru Thursday 9:30 - 4:00  
Friday 9:30 - 6:00

### Traffic Deaths, Injuries Show Slight March Drop

Traffic deaths and injuries showed a reduction during March as compared with the same period last year, but accidents increased slightly, according to the State Police monthly statistical report. There were 177 persons killed, a decrease of 12, or 6.4 per cent, below 189 in March of 1953. Injuries numbered 3,596, a drop of 10 per cent, or 385. Accidents totaled 14,474, a gain of eight per cent, or 1,045.

There was a substantial decrease in urban and rural trunk line deaths, but rural county road deaths were higher.

Michigan's traffic toll for the first three months of 1954 includes 552 killed and 11,989 injured in 47,195 accidents. Deaths dropped two per cent below 369 in the first three months last year. Injuries jumped six per cent, or 729, over 11,260, and accidents increased 14 per cent, or 3,792 over 11,405.

Estimated motor travel during January and February, the latest figures available, was 3.7 billion miles, an increase of two per cent over 3.6 billion for the same period last year. The death rate of 6.7 per 100 million miles of travel was down four per cent.

### All-A Students Honored By M.S.C. President

Gabriel N. Muebling of Farmington, a junior at Michigan State College, will dine in select company Friday evening at the college.

She is among 144 students to be honored at a dinner by MSC's President Dr. John A. Hannah for earning an "all-A" academic average winter term.

Names of these students will be placed on the Honor Roll which reads: "In recognition of the highest attainment of scholarship during the winter term 1954."

**3-1954**

**TIME AND YOUR HEALTH**

Time is important in protecting your health. When you are sick, your doctor may say—these medicines, plenty of rest, and time will cure you. In desperate illness, when your doctor prescribes immediate medication, you can be sure your Rexall pharmacist will give your prescription priority, utilizing his skill to prepare the medicine with accuracy in the least possible time. On prescribed medicines to be taken over a long period of time, your Rexall pharmacist will give you consistently fine service—always at fair prices.

**YOUR REXALL PHARMACIST**

**BRADLEY**

**Rexall**

**DRUGS**

REKALL FOR RELIABILITY

3323 GRAND RIVER AVE.

### Michigan Among Top Manufacturing States; Produces Variety Of Items

If you think that automobiles are the only commodity turned out by Michigan factories, you're wrong—dead wrong. The fact is that Michigan manufactures 31% of all types of products, making it one of the most diversified manufacturing states in the country. Michigan doesn't produce tin cans, wallpaper, straw hats, or beehive coke ovens, but you will find manufactured artificial eyes, stoves, dumb waiters, perfume, roller skates, worms, and wormicides.

In all, out of a total of 451 industry groups listed by the Census Bureau there are only 87 not present in Michigan.

In values of shipments of passenger cars, Michigan stands first with 52% of the total U. S. value, putting it well at the top. The state also ranks first in value of shipments of other vehicles on chassis of own manufacture such as trucks and automobile trailers.

Michigan's number of other manufacturing firms to boast of—gray-iron, cutting tools, wood-working machinery, considerable hardware, plating, and polishing, and salt and cereal preparations.

Michigan is among the leaders in the production of drugs, refrigeration machinery, internal-combustion engines, machine tools, computing and related machines, iron and steel forgings, copper rolling and drawing, malleable-iron castings, screw-machine products, sporting and athletic goods, furniture, tires and inner tubes, chemicals and paper products.

Just as Detroit is generally known as the automobile capital of the world, many other cities have earned the right to be known as capitals of their principal products. To name a few: Battle Creek—cereals; Holland—furnaces; Grand Rapids—furniture; Kalamazoo—paper products and drugs; Midland and Wyandotte—chemicals.

Michigan has a fair number of great companies. In addition to the giant automotive companies located in Detroit, Pontiac, Flint and Lansing, there is the Upjohn Company of Kalamazoo, operator of the largest pharmaceutical plant in the world; the Dow Chemical Company of Midland, one of the world's largest chemical centers; the Fisher Company of Fremont, the nation's No. 1 producer of canned baby foods; and the world's largest single Portland cement plant in Alpena.

Not so important perhaps to Michigan's economy, but nevertheless interesting are the Thomas J. Nichol Company of Grand Rapids, the country's outstanding calligraphic repair center, and the Village of Colon, the principal industry of which is the manufacturing of magellan's equipment.

Also of interest is the fact that Kalamazoo is known as "The Paper City", having some of the largest gray-iron casting foundry, T. Muskegon, has the world's largest gray-iron casting foundry; the largest billiard table and bowling alley factory, and is the largest independent internal combustion engine producer.

With all of these industries, both large and small, Michigan ranks fifth in the country as an industrial state, although standing only seventh in population. It stands second among the ten ranking industrial states in the value of products per worker.

As a consequence, Michigan and its industrial workers are fairly well off today. The average factory worker makes \$86.50 per week, and the annual income of Michigan's 1,240,000 families is more than \$6,600—well above the national average.

All in all, Michigan people can view with pride their state's industrial accomplishments.

### OUTDOOR HAZARD POINTS FOR CHILD AT PLAY LISTED

Now is the time that youngsters begin a long season of play outdoors. Will your children be safe from injury while they are out of your sight, or will they be headed for tragedy?

The Institute for Safer Living warns that there are ten common hazards to be found in nearly every community in the country. These hazards are responsible for hundreds of tragic child deaths each year.

The most serious community child hazards listed by the Institute are as follows:

1. Water filled holes, pits and ditches; also unprotected natural streams.
  2. Old ice boxes and refrigerators.
  3. Steep cuts and banks, particularly sand banks.
  4. Community junk heaps.
  5. Junked autos and unused machinery.
  6. Accessible electric wires.
  7. Unsafe outside stairways and ladders left standing against buildings.
  8. Abandoned sheds and buildings.
  9. Unguarded construction projects.
  10. Unprotected chemicals and building materials.
- Controlling or getting rid of these ten leading community trouble makers should be the objective of every parent with young children.

Youngsters love to explore and have little real sense of danger. Warning them about unsafe places to play is not enough, the Institute points out.

Baltimore, Md., estimates it has saved \$80,000 by using 8,000 tons of fly ash from coal in Liberty Dam, the East's first fly ash concrete dam.

### 'Parents' Day' At MSC Attended By Hamilins

Mr. and Mrs. Delos Hamlin, 22631 Brookdale, were among the 2,000 parents who gathered at Michigan State College last week end for the fourth annual "Parents' Day" on campus.

Activities Saturday included an intra-squad football game and the showing of Rose Bowl parade and game films, coffee sessions, open houses, a carillon concert and a concluding "Collegiate Comeback" dance and student talent show in the evening. Organ music at the Alumni Memorial Chapel and the annual outdoor M. S. C. Satority Sing highlighted Sunday's activities.

M. S. C. President John A. Hannah addressed the parents at the Kellogg Center Saturday afternoon.

If the folks at your house are diet conscious, don't cut milk out of your menus. Skim milk, butter-milk and nonfat dry milk solids are recommended. They are lower in calories and in Vitamin A than whole milk, but are high in protein, minerals and riboflavin.

## New...! ANNUAL PAYMENT PLAN ON GENERAL'S FIRE INSURANCE

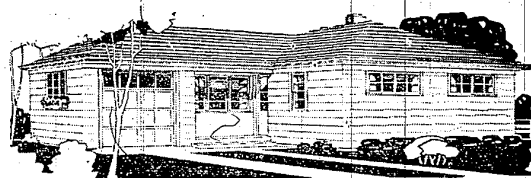
NOW... with General's easier payment plan you pay small yearly premiums and enjoy the same savings you would realize by paying the 3 year premium... In addition, General Insurance Company has never paid less than 15% dividend to its policyholders.



**R. LEWIS BROWN**  
AND ASSOCIATES  
Farm. 2971-J

AUTO - CASUALTY - FIRE - LIABILITY - LIFE INSURANCE

## We Build To Your Liking YOUR PLANS OR OURS



Have Been Building in Farmington for 10 Years

★ ★ ★ ★

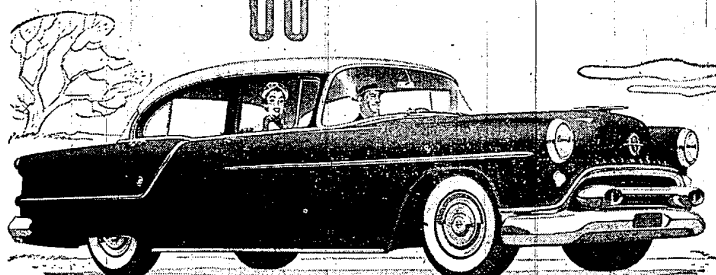
## R. W. ELLIS BUILDER INC.

29245 List Ave. Farmington Phone 0689

### IF YOU LIKE IT in the showroom

... If you spark to the low-slung silhouette of this stirring Super "88" ... those long and lovely lines of sweep-cut doors and fenders ... the dramatic panoramic windshield that makes others look old ... In short, if this car gives you a thrill just standing still ...

**-You'll Love it on the Road!**



Super "88" 4-Door Sedan. A General Motors Vehicle

Love it? You'll rare about it! It's like nothing you ever felt before—because it's like nothing ever built before. Never such picture-window vision. Never such a road-hugging, relaxing ride! Never such a breath-taking burst of power as from this record-breaking "Rocket" Engine! Never such effortless ease and security as with this new Safety Power Steering! Yes, behind the wheel of this Oldsmobile you're really living! So why waste another day of May? Make your date with a Super "88" today—for the "Rocket" ride of tomorrow!

\*Optional extra cost

"ROCKET" ENGINE

OLDSMOBILE

— SEE AND DRIVE IT AT YOUR NEAREST OLDSMOBILE DEALER'S —

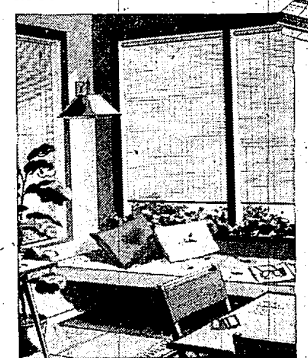
Earl Vivier

Phone Farmington 0950

or visit 33205 Grand River Ave.

CHECK YOUR CAR - CHECK ACCIDENTS - MAY IS SAFETY MONTH!

## They're Here! Lattishades WOVEN WOOD IN SOFT DECORATOR COLORS...



Newest idea in window treatment for traditional, period or modern interior! Narrow strips of bordered woven with 3-cord soft Irish cotton warp threads. Sun- and weather-resistant, easier to clean—just wipe with damp cloth. Natural, off-white, walnut, citron yellow, dove gray and willow green. Smaller size Lattishades are mounted on spring rollers, larger sizes with pull cords and automatic stop-locks.

Columbia Lattishades custom-made to measure. Come In and See Our Lattishades and Get Our Prices to Meet Your Needs

**DICKERSONS**  
**HARDWARE STORE**

24225 Orchard Lake Rd.

Phone 0004