

Latest home case pieces are designed to be versatile, according to a leading authority on home furnishings. In many instances these cases fit into a one-room character and prove adaptable to living room, dining room and bedroom.

There are cases which answer the problems of storing table linens inconspicuously in base sections, and other long, low cases, some extending to 72 inches, with curved double doors to reach the long line.

Vacant space in your freezer? Put it to use, suggest Michigan State College home economists. By freezing main dishes Casseroles made of ovenproof material can be covered and then sealed with freezer tape or wrapped.



FIRE — LIFE — AUTO
30760 Grand River
(Near D Mile)
Phone 2210

PUT Spring IN YOUR LAWN

Spring Time Is Just Around The Corner and that calls for LAWN SEEDS and FERTILIZERS

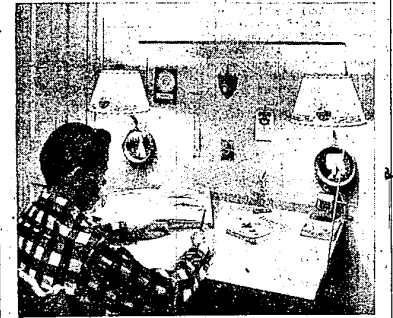
We Have In Stock Mixed Grade A Lawn Seed Kentucky Blue — Red Top — White Clover — Perennial Rye — and Fescue Seeds.

For Lawn Fertilizers, We Have DAVCO GRANULATED FERTILIZERS KO-K-O, TOL-E-GRO, SHEEP MANURE, PEAT MOSS and LIME



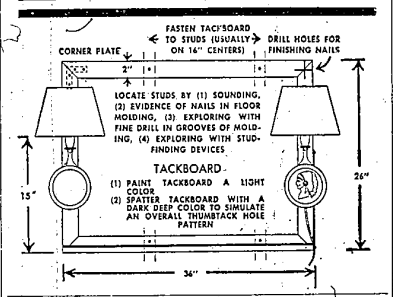
Homes and Gardening

A 'Do-It-Yourself' Study Center Built In The Home Will Help Enhance Good Study Habits In Youngsters



Most teachers agree that good study habits begin at home. One quick way to interest young students in homework is to help them set up their own study center. Their own desk with comfortable and eye-protecting lighting will help encourage concentration. For the student it will pay big dividends in helping him do his studying faster and with less strain.

Although the old saying about shoemaker's children may be true in some cases, 13-year-old David Allen, son of Carl J. Allen, school lighting expert for the General Electric Lamp Division, believes in practicing what his dad teaches at home. His home study center, pictured above, is not only planned for good seeing but it's his dad's own original design for a home-built study center which they made together.



Late Spring Feeling Can Be Brought Into Home By Plant Forcing Process

Are you getting eager to enjoy the heavenly scents and colors of those first flowering shrubs and trees?

Why not force spring a little and brighten the drab look of your home by cutting branches of your favorite shrubs and bringing them indoors for forcing?

Elada Clover, associate professor of botany at the University of Michigan, states that there are numbers of plants which may be easily and successfully forced so you can enjoy their out-of-season beauty.

The rates for forcing are very simple and the results rewarding. The branches should be cut after the buds have begun to swell but before they show signs of blooming. The botanist says. Some people suggest crushing the ends with a hammer or cutting the lower ends diagonally with a knife, although this is not essential.

Place the branches in rather deep, lukewarm water in a bucket-sized container. The air should be somewhat moist and cool. A basement or a cool spare bedroom would be ideal. Remember the developing buds need light but it should not be direct, or too intense. The branches should be sprayed with water every few days to keep the buds from drying out," she says.

"First to come out under indoor forcing will be Forsythia, with its much-loved brilliant yellow flower, and the silvery-grey pussy willow.

"The silver maple, with its small clusters of reddish flowers growing close to the stem, also has fine decorative value.

"Cottonwoods, and other poplars, may be enjoyed for the novelty effect of their brilliant red or greenish-colored catkins. The older's long trailing catkins, consisting of many minute brownish flowers, may be used to add a touch of the whimsical.

"Most beautiful of all are the scented, delicately colored blossoms of the flowering fruit trees. Easily forced are the exquisite pink and white blossoms of apricot, plum, apple, peach, pear, and Japanese quince.

"Redbud and Spirea will lend themselves readily to this treatment, and you should also have good luck forcing the branches of the little woodland shrub, Benzoin, and prickly ash. Both of these have small yellow flowers.

"Most of these are very easily forced and will probably give you flowers within a week or ten days. But — decorative considerations aside — you can have fun watching the spring development of almost any blossoming branch," Professor Clover promises.



Pots and pans stay SPARKLING CLEAN when you cook electrically

Just think... no rubbing, scrubbing to shine pots and pans. And that isn't all. Kitchen walls and curtains stay cleaner and brighter, too. Electric cooking is clean as light.

SEE-YOUR DEALER OR DETROIT EDISON

Dress Up Those Walls With Woodpaneling

It doesn't require the wealth of a millionaire to have luxurious paneled walls in the home. Wood-panel offers authentic reproductions of select wood grains. These panels capture all the warmth and beauty of the world's most expensive woods, yet cost only pennies per foot. Use woodpanel on walls, built-ins, or table tops exposed to rough usage.

The soft-proof baked finish is fused to a strong tempered hard-board base for permanent beauty. The large, lightweight panels quickly cover old or new wall can be easily cut to any size or shape.

John Clappison Sales Insurance

Label On Lawn Grass Seed Mixes Tell Contents

Ten per cent of the 93 million pounds of lawn seed used nationally are estimated to be sown in Michigan where within a few weeks homemakers and others will be sowing new lawns or patching up bare spots.

Since no one lawn mixture is ideal for all conditions, G. S. McIntyre, director of the Michigan Department of Agriculture, urges purchasers of lawn mixtures to read well labels on the containers before buying.

Labels not only should contain germination percentages of the ingredients but also the various types of grass seeds that go to make up the mixture.

In its seed testing laboratory at Lansing the Michigan Department of Agriculture runs hundreds of seed tests for germination and purity year. Lawn mixtures make up a sizeable part of the total tests. And they are the most complicated.

Lawn mixtures are made up of anywhere from five to nine different kinds of grasses, considered by the company offering it to be the most suitable for the purpose intended.

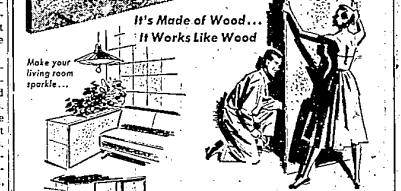
In the Department's seed laboratory a sample from a lawn mixture is carefully taken. Skilled analysts work under strong lights. They use a glass that looks like a jeweler's glass in sorting out the various seeds. Most analysts at a glance can identify 125 different kinds of noxious weed seeds. When found, these weed seeds count against the

sample's percentage of purity. After various kinds of grasses are segregated, the various types are germinated. The results in the Department's laboratory. There is a big factor in the germination time of different kinds of grass seed. Some types such as white clover or red clover, Japanese Bluegrass, some of the best, take as long as 35 days. In the completion of a lawn mixture test, the Department's laboratory is one of the slowest in the country.

Frequent cutting doesn't make your hair grow faster, experts say.

New Long-Bell flakewood decorative paneling

for smart modern interior finish



It's Made of Wood... It Works Like Wood

Do it Yourself... with Ordinary Tools

Flakewood brings a beautiful new depth in wood tones to any room. The most modern of pressed woods, made of fibers and flakes in a new Long-Bell process. Unusually strong — easy to stain, paint, or varnish. You can work it with ordinary tools. Economically install Flakewood yourself.

Available in 4 Natural Woods: Federal Oak, Western Red Cedar, Flakewood comes in 4' x 8' panels 12' x 12' — 16' x 16' sizes.

FARMINGTON LUMBER & COAL CO.

32800 Grand River in NOVI Phone 0020
43755 Grand River Phone Northville: 308



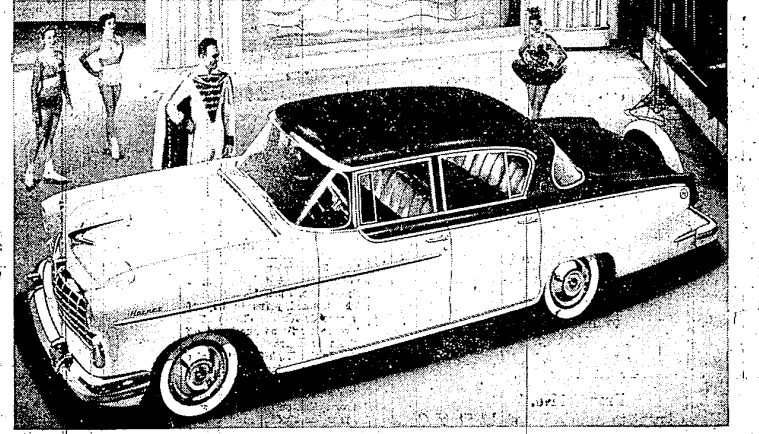
INTERIOR DECORATORS



Panning Ideal For Space Behind Stove

Above the stove in the kitchen is perhaps the hardest place in the entire house to keep clean, being subjected to moisture, splattered food and grease.

This problem can be solved by installing a 4 x 4 foot prefinished wallpanel to the wall behind the stove. Select a paneling with a baked finish which is impervious to moisture, grease and food stains; wipes clean with a damp cloth.



Beautiful Performers... the brilliant, new, years-ahead Hornet and the flashing stars of the 1955 Shipler and Johnson Ice Rollers.

American Motors goes all out with New Hudson Hornets and Wasps

— new high style, new power, twice-as-safe bodies, three times better ride

Quick, rugged power — new Hornet V-8, latest, greatest of them all — low friction, quick action. Or choose the Champion Six, winner of over 150 stock-car events — fully automatic drives offered with both engines.

Twice as strong, twice as safe — Double Strength Single Unit Body — one-piece, rustproof. This structure makes possible new Deep Coil Ride — extra-long coil springs with three times ordinary cushioning power — three times better ride.

Hudson Hornets • Wasps • Ramblers • Metropolitans are products of American Motors

TAVERN AUTO SALES

28001 GRAND RIVER WM. — DON & BOB SHAW PHONE FARM, 1692 — KE. 2-0181