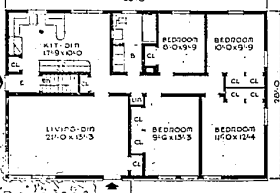




A SMALL HOUSE PLANNING BUREAU DESIGN NO. C-358



A HOUSE PLAN plan with plenty of bedroom space for a larger family is Design C-358 above. For further information, write the Small House Planning Bureau, St. Cloud, Minnesota.

## MORE PROFITS for YOU

COUNT YOUR BLESSINGS Get a bigger yield per acre . . . and reap a bigger profit . . . by planting the best seed you can buy: scientifically developed, farm-tested, proved successful!

CERTIFIED CLINTON and KENT SEED OATS

- Alfalfa Seed — Red Clover
- Alsike Clover — Lidino Clover
- White Clover — Sweet Clover
- Timothy Seed — Blue Grass
- Red Top — Perennial Rye — Brome Grass
- Orchard Grass — Fescue and
- Grade A Mixed Lawn Seed

MANY DIFFERENT ANALYSES OF FERTILIZERS ARE AVAILABLE NOW FOR EARLY SEEDING

MILLERS 1/2 FLOUR AND FEED FOR OVER 50 YEARS

**FARMINGTON MILLS**

ESTABLISHED 1895 35408 STATE ST. FARMINGTON, MINN. PHONE 0689

**START NOW**

**enjoy**

these comforts in Spring & Summer

Lawn furniture will make outdoor living a pleasure.

**DO-IT-YOURSELF**

You can save a lot of money by building your own lawn furniture. Start early and have it ready for those sunny days.

East-Build Patterns

LUMBER CEILING TILE

PLYWOOD INSULATION

PANELING ROOFING

FLOOR TILE SIDING

**FARMINGTON LUMBER & COAL CO.**

32800 Grand River Phone 0020

in NOVI

32755 Grand River Phone Northville 308

## Life Of Seed Depends On Soil Covering

When seeds are sown directly in garden soil they face many hazards. It is not unusual for professional growers, sowing top quality seed, to fail to "reap a crop." But home gardeners can protect their seeds with precautions which would be prohibitive on large acreage, and they are well advised to do it.

The first fight which a growing seed must win is the struggle to reach the sun. This is no small matter in a heavy soil, which tends to form a crust which a tiny seedling may not be able to penetrate. The top inch of soil, for this reason, is to the seed the most important in the garden.

The fall pay home gardeners will to prepare a special soil with which to cover the seed. Save your best loose, sandy loam and mix in all the compost you can, and lacking compost, use peat moss. Then after the seed is sown, cover with this special soil, which will not form a crust and will allow both water and air to penetrate for the benefit of your seedlings.

This treatment is especially important in hot weather, when most soil is liable to bake into a surface crust.

Other hazards lie in the path of a seed sown in the garden. Its life may be destroyed before it even emerges from the soil by drowning, when water stands too long in the spot where it was sown; or by disease, especially in cold damp weather, which encourages the growth of molds and fungi, while delaying germination of the seed.

Disinfectants are outmanned with which seeds can be treated to protect them from disease.

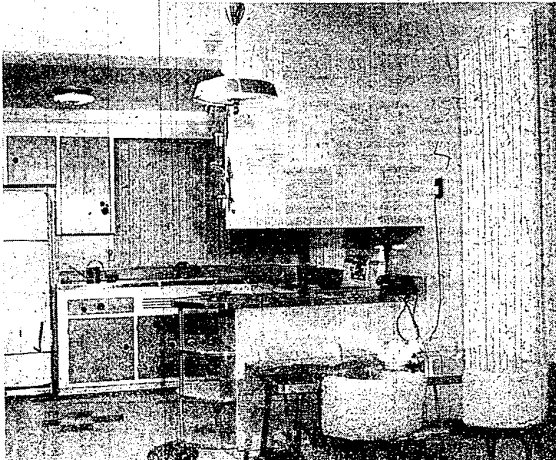
Soil must be firmed above the seeds to form close contact and prevent air spaces from separating the soil and seed. This is especially important with beet and Swiss chard seeds and others of large and irregular shape. But firming does not mean pounding. Press down with the hoe blade or use the side of a rake, and afterwards draw the rake lightly over the row to break up the crust and prevent baking.

Experienced gardeners learn through trial and error to watch this point, and take precautions to avoid conditions which may prevent seeds from growing. A heavy rain falling soon after seed is sown may pack the soil too hard,



## Homes and Gardening

### 'Do-It-Yourself' Building Project Proves Big Success



The end results were worth the many hours of planning and hard work.

#### EDITOR'S NOTE:

Building activities are very prevalent about the Farmington area these days and a wide variety of both exterior and interior designs are being used. Not only in new homes, but in older homes being remodeled, many unusual and attractive building ideas are being employed. We will present to you from time to time on this page pictures and stories of these unusual and attractive building accomplishments as they are brought to our attention. If you or any of your neighbors in the Farmington area have a home, room in the home, garden, etc., which you feel others in the area might be interested in hearing about, we would appreciate hearing from you about it.

### Springland Subdivision Couple Plan, Build Attractive Kitchen

The attractive kitchen in the photo above is a feature of the William Ward home on Springfield Drive in Springland Subdivision. The compact kitchen is laid out for convenience and ease in the preparation of meals.

Truly professional workmanship is in evidence throughout the room, yet most of the building in the kitchen was done by Mr. and Mrs. Ward themselves. Countless hours were spent by the ambitious couple in planning and building the room to their complete satisfaction.

The walls of the kitchen are painted Berkley Blue. All counter tops are finished with light pink linen Formica with the cupboards doors of natural birch set against a white base. The floor covering is white plastic tile, with black speckled tile used for the border. Matchstick bamboo red spatter drapery with black scroll on a

white background adorn the windows. The light fixture for the dining area is real type to allow for head room while not in use. The snack bar serves as a divider between the kitchen area proper and the breakfast nook. One side of the snack bar provides cupboard space with the other side, being seen from the kitchen, is finished off in attractive Weldon block paneling. The painting was painted white and blue and wiped off white still wet in each case, giving a very appealing finish to match the walls of the rest of the kitchen.

The snack bar, of original design, is the Wards' own creation. Besides proving very useful as a place to lunch from and a divider, the snack bar does a great deal in adding to the appeal of the kitchen. This is a project which any home handyman can do.

### Fendt Builders' Supplies Add New Equipment

Fendt Builders' Supplies of Farmington announced the completion of another phase of their expansion program.

The latest improvement is the installation of a new block producing machine, a Stearns model 30-3 block machine, which will considerably increase production capacity.

The equipment will also facilitate the manufacture of a lightweight Buellite block, a product of increasing demand, which the company heretofore has not manufactured.

Fendt Builders' Supplies, located on Gill Road, have been doing business at the same location since 1925. In 1929 block and other concrete producing equipment were added, and in 1951 transit mix concrete was added to their growing list of builders' supplies.

This latest development is another step in the long range improvement and expansion program inaugurated by L. E. Fendt, owner and operator of the company.

The company extends a welcome to anyone wishing to visit the plant. Arrangements to do so can be made by contacting the management, at which time they will give their assistance to assure an interesting tour.

A creative economy is the fuel of magnificence.

John Clappison Sells Insurance

## We Build To Your Liking

YOUR PLANS OR OURS



Have Been Building in Farmington for 10 Years

## R. W. ELLIS BUILDER INC.

29245 List Ave. Farmington Phone 0689



Look! No scouring pad... honest!...

Pots and pans stay

## SPARKLING CLEAN

when you cook electrically

Just think . . . no rubbing, scrubbing to shine pots and pans. And that isn't all. Kitchen walls and curtains stay cleaner and brighter, too. Electric cooking is clean as light.



COOK ELECTRICALLY

SEE YOUR DEALER OR DETROIT EDISON

## Highest Quality OF FIELD GROWN



These **ROSES** are all POTTED in Clover Set Pots, Ready to Place in Your Rose Garden

PATENTED TEAS — POLYANTHAS

FLORIBUNDAS — HYBRID

ALL AMERICAN WINNERS 1954 and 1955

Chrysler Imperial Mojave Queen Elizabeth

## STEINKOPF NURSERY

20815 Farmington Road Phone 0730