

# In And Around The Springland Area

MRS. RALPH EVERT Phone GR. 4-0278

Last week residents in this area were registered for the Bond - Eagle Blood Bank, a part of the Inter-Lakes Blood Bank, for the Red Cross Bloodmobile visit to the West Bloomfield Township Hall on Orchard Lake Road on Monday, February 20.

It is revealed the response was very good. Cooperation was excellent by residents in canvassing for registration, officials stated.

Many residents also offered aid in providing transportation and in donating blood. Others offered to help at the Blood Bank on that day.

Funeral services were held in Cleveland, Ohio, the first part of the week for Mrs. Ann Cleary, mother of Mr. E. R. Warnke of Bramwell, Mrs. Cleary died February 9.

Mr. and Mrs. Warnke and son, Bob, left for Farmington Saturday, February 11, to attend the services in Cleveland. They plan to stay there several days.

On February 5, Mr. and Mrs. Oscar Vetter and son, Charles, of Holly Hill Drive, attended the dedication of the St. Paul's Lutheran School on Park Hill. It is reported that 100 students are now attending the school.

Mr. and Mrs. Hubert Neal and family of Rockshire Drive entertained Dr. and Mrs. Howard Pearl and daughter, Virginia, last Saturday, February 11. Dr. Pearl and Mrs. Neal are friends of long standing, having attended college together.

Schools throughout Oakland County, including the Farmington schools, were allocated \$655,087 for 138,204 pupils.

Michigan Bell's tax payment, the largest in the company's history, amounted to \$4.74 for each of the 1,740,788 youngsters in the state between the ages of 5 and 19 who are on the census rolls.

The company, in common with railroads, Pullman, railway express, telegraph, and other telephone companies, pays a state property tax earmarked for the Primary Fund in lieu of other property taxes.

Schools throughout Oakland County, including the Farmington schools, were allocated \$655,087 for 138,204 pupils.

Michigan Bell's tax payment, the largest in the company's history, amounted to \$4.74 for each of the 1,740,788 youngsters in the state between the ages of 5 and 19 who are on the census rolls.

The company, in common with railroads, Pullman, railway express, telegraph, and other telephone companies, pays a state property tax earmarked for the Primary Fund in lieu of other property taxes.

Schools throughout Oakland County, including the Farmington schools, were allocated \$655,087 for 138,204 pupils.

Michigan Bell's tax payment, the largest in the company's history, amounted to \$4.74 for each of the 1,740,788 youngsters in the state between the ages of 5 and 19 who are on the census rolls.

The company, in common with railroads, Pullman, railway express, telegraph, and other telephone companies, pays a state property tax earmarked for the Primary Fund in lieu of other property taxes.

Schools throughout Oakland County, including the Farmington schools, were allocated \$655,087 for 138,204 pupils.

Michigan Bell's tax payment, the largest in the company's history, amounted to \$4.74 for each of the 1,740,788 youngsters in the state between the ages of 5 and 19 who are on the census rolls.

The company, in common with railroads, Pullman, railway express, telegraph, and other telephone companies, pays a state property tax earmarked for the Primary Fund in lieu of other property taxes.

Schools throughout Oakland County, including the Farmington schools, were allocated \$655,087 for 138,204 pupils.

Michigan Bell's tax payment, the largest in the company's history, amounted to \$4.74 for each of the 1,740,788 youngsters in the state between the ages of 5 and 19 who are on the census rolls.

The company, in common with railroads, Pullman, railway express, telegraph, and other telephone companies, pays a state property tax earmarked for the Primary Fund in lieu of other property taxes.

Schools throughout Oakland County, including the Farmington schools, were allocated \$655,087 for 138,204 pupils.

Michigan Bell's tax payment, the largest in the company's history, amounted to \$4.74 for each of the 1,740,788 youngsters in the state between the ages of 5 and 19 who are on the census rolls.

The company, in common with railroads, Pullman, railway express, telegraph, and other telephone companies, pays a state property tax earmarked for the Primary Fund in lieu of other property taxes.

Schools throughout Oakland County, including the Farmington schools, were allocated \$655,087 for 138,204 pupils.

Michigan Bell's tax payment, the largest in the company's history, amounted to \$4.74 for each of the 1,740,788 youngsters in the state between the ages of 5 and 19 who are on the census rolls.

The company, in common with railroads, Pullman, railway express, telegraph, and other telephone companies, pays a state property tax earmarked for the Primary Fund in lieu of other property taxes.

Schools throughout Oakland County, including the Farmington schools, were allocated \$655,087 for 138,204 pupils.

Michigan Bell's tax payment, the largest in the company's history, amounted to \$4.74 for each of the 1,740,788 youngsters in the state between the ages of 5 and 19 who are on the census rolls.

The company, in common with railroads, Pullman, railway express, telegraph, and other telephone companies, pays a state property tax earmarked for the Primary Fund in lieu of other property taxes.

Schools throughout Oakland County, including the Farmington schools, were allocated \$655,087 for 138,204 pupils.

Michigan Bell's tax payment, the largest in the company's history, amounted to \$4.74 for each of the 1,740,788 youngsters in the state between the ages of 5 and 19 who are on the census rolls.

The company, in common with railroads, Pullman, railway express, telegraph, and other telephone companies, pays a state property tax earmarked for the Primary Fund in lieu of other property taxes.

Schools throughout Oakland County, including the Farmington schools, were allocated \$655,087 for 138,204 pupils.

Michigan Bell's tax payment, the largest in the company's history, amounted to \$4.74 for each of the 1,740,788 youngsters in the state between the ages of 5 and 19 who are on the census rolls.

The company, in common with railroads, Pullman, railway express, telegraph, and other telephone companies, pays a state property tax earmarked for the Primary Fund in lieu of other property taxes.

Schools throughout Oakland County, including the Farmington schools, were allocated \$655,087 for 138,204 pupils.

Michigan Bell's tax payment, the largest in the company's history, amounted to \$4.74 for each of the 1,740,788 youngsters in the state between the ages of 5 and 19 who are on the census rolls.

The company, in common with railroads, Pullman, railway express, telegraph, and other telephone companies, pays a state property tax earmarked for the Primary Fund in lieu of other property taxes.

Schools throughout Oakland County, including the Farmington schools, were allocated \$655,087 for 138,204 pupils.

Michigan Bell's tax payment, the largest in the company's history, amounted to \$4.74 for each of the 1,740,788 youngsters in the state between the ages of 5 and 19 who are on the census rolls.

The company, in common with railroads, Pullman, railway express, telegraph, and other telephone companies, pays a state property tax earmarked for the Primary Fund in lieu of other property taxes.

## Obituary

William Mark Woodard

Funeral services were held Saturday, February 11, for William Mark Woodard of 31560 Leelanau, who died suddenly on February 8 at Mt. Carmel Hospital. Funeral services were held at the Sparks-DeMund Funeral Home in Royal Oak. Interment was in White Chapel Cemetery.

William Woodard, who was born December 10, 1930, is survived by his parents, Mr. and Mrs. William Woodard, and a sister, Debra Lynn; paternal grandparents Mr. and Mrs. Leon Woodard and Mrs. Stanley Gogis of Madison Heights; and a great-grandfather, John Von-derweater of Drayton Plains.

OFF-CAMPUS CLASSES

The University of Michigan is offering nearly 350 second-semester classes in some 40 off-campus centers and communities of the state. Most of the classes began the week of February 13, though some in the real estate program began in January. A number of eight week courses will open in mid-semester.

Wanna Buy, Sell, Rent or Trade? Try A Classified Ad!

## CRANBROOK SCHOOL, KINGSWOOD READY ANNUAL OPERETTAS

Farmington area residents are invited to the annual operettas of the Kingswood and Cranbrook Schools in Bloomfield Hills, to be held this year on February 24 and 25.

The traditional Gilbert and Sullivan musicals will take its back seat this year as both schools shift to modern American operettas. They have chosen to present "The Lowland Sea" and "Sunday Excursion," written by Alec Wilder and Arnold Sungard.

"Sunday Excursion," which was adapted specifically as a curtain raiser, will precede "The Lowland Sea," an operetta based on American folklore and folk songs. Lois Chapman of Kingswood and Robert E. Bates of Cranbrook will co-direct the operettas.

Both performances, which are open to the public, will begin at 8:30 p.m. in the auditorium of Kingswood School. Tickets may be secured from the school offices at the door.

## Looking Ahead

By DR. GEORGE S. BENSON

(Continued from Page 2B)

other hand, if enough of us will adequately inform ourselves of the political and economic facts of life today — worldwide and at home — and strengthen our government by intelligent and unselfish participation in it, the American nation will not be destroyed; and Socialism, Communism and demagoguery will suffer defeat.

Any citizen can intelligently and unselfishly participate in his government by spending two cents for a post card and telling his representative in Congress, in the State legislature and in the county court house why he should take this or that action. But first he must know why. The Citizens Committee for the Hoover Commission can help you know the "why" of recommendations it has made to strengthen our Federal government through improved efficiency and economy. For a concise explanation of the recommendations, write the Committee for its 252-page digest and analyses — 441 Lexington Avenue, New York 17.

Part of the proceeds from the operettas are customarily donated to Children's Hospital in Detroit where Cranbrook students maintain a room in memory of an alumnus.

John Clappison Sells Insurance Phone GR. 4-3511

## Three Attain 'A' Averages At MSU

Three students from the Farmington area were among a group of 216 students at Michigan State University who were honored for their high scholastic achievements. Local students honored were Loren R. Clifford, son of Mr. and Mrs. L. G. Clifford of 33630 Hillcrest Drive; Barbara J. Eichler, daughter of Mr. and Mrs. J. D. Eichler of 34703 Nine Mile Road; and Michael K. Nichols, son of Mr. and Mrs. Kenneth Nichols of 26475 Fourteen Mile Road.

Dr. John A. Hannah, university president, honored the students with a dinner on Tuesday, February 7. Each student achieved an all "A" academic average for the fall term.

Names of the honor students will be placed on the honor roll, which reads "In recognition of the highest attainment of scholarship during the fall session."

WALLPAPERING ? Cranston Paint Shop 31185 W. Ten Mile, Near Orchard Lake Road GR. 4-2674

### FAMOUS - FOR QUALITY! - FOR LOW PRICE! - FOR FINE CLEANING

**MEN'S SUITS & TOPCOATS**

**LADIES' COATS & DRESSES**

CLEANED AND REWASHED

**\$29**

**CASH AND CARRY SAVES THE DIFFERENCE**

**SPECIALS**

Wash and Dry Feb. 25

Men's Felt HATS ..... 69c

TIES ..... 3 for 39c

Blouses ..... 49c

**5 FOR 1.19**

**SHIRTS**

Regularly laundered and finished, including dry cleaning in telephone

**SHOE REPAIR**

Special shoe service for your shopping convenience

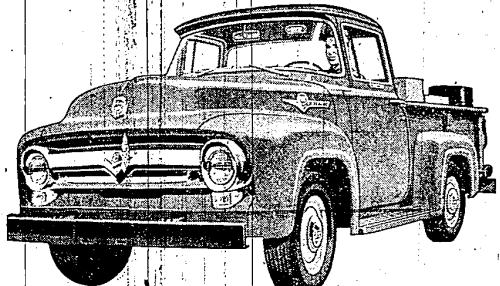
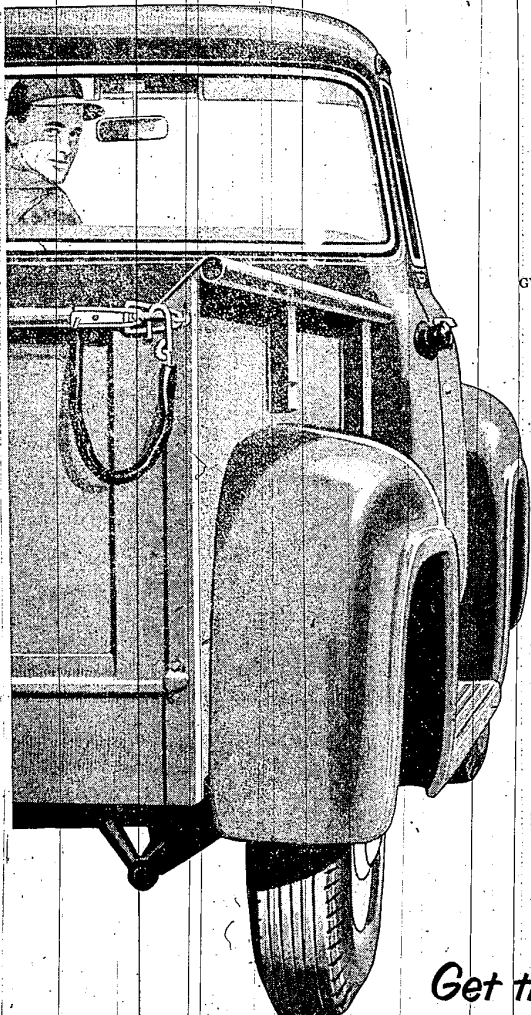
**Famous CLEANERS**

There's a Service For You!

**24071 Orchard Lake Road**

In The New Bel-Aire Shopping Center

# Biggest money's worth in Pickups for '56



NEW FORD F-100 8-FT. 1/2-TON PICKUP, GVW 5,000 lbs. Choice of 133-h.p. Six or 167-h.p. V-8.

## Most Power!

Ford's new 1956 line of Pickups offers you the most power and performance in Ford history. Only the Ford Pickups give you gas-saving Short Stroke design in two engine choices, V-8 and Six! Ford's got the only modern Short Stroke Six in the 1/2-ton field!

## Most Capacity!

Ford's new 8-ft. box gives you more loadspace than any other 1/2-ton pickup—up to 19 cu. ft. more. Available on the 118-in. wheelbase. Extra cost is surprisingly low. The standard 6 1/2-ft. box, or the 110-in. wheelbase, is one of the roomiest in its field—gives you a full 45 cu. ft. of loadspace.

## Most Comfort!

Ford's new Driverized Cab is the easiest of all cabs to get in and out of. Doors open a full 70°—as much as 25° wider than other trucks. Most restful ride in any truck is yours with full foam rubber, 5 inches in seat, 3 inches in seat back... offered with 13 other extras in Custom Cab, low added cost.

## Most Safety!

Only Ford Trucks have new deep-center Lifeguard steering wheel. Helps protect driver from contact with steering column in case of accident. Only Ford Trucks have new Lifeguard door latches, to help guard against doors springing open in an accident... No extra cost! Ford seat belts available at low added cost.

# Get the Best Value During Our FEBRUARY SALES JUBILEE

## BERLING - McHUGH, INC.

FORD SALES and SERVICE  
Farmington, Michigan

GREAT TV! FORD THEATRE, WWJ-TV, 9:30, THURSDAY

GR. 4-1234

### FEBRUARY FEATURES

AT YOUR **REXALL** DRUG STORE

FEATURING NATIONALLY ADVERTISED PRODUCTS

**SHAVING COMBINATION**

Two famous together in more than 1/2 pint. Silig Shave Cream and Silig Shaving Lotion.

**NOW ONLY 69¢**

**SILICONE LOTION**

A protective liquid that leaves an invisible, flexible, soft coating on hands that will actually repel water. Grease, dirt, detergents all protect your hands against raw winter weather.

REG. \$1.00 2 ounce bottle

**77¢**

**COLGATE TOOTH POWDER**

Great - Size

**43¢**

**FASTEETH**

Medium Size

**59¢**

**REXALL MINERAL OIL** Odorless, tasteless, candle-like lubricant. .... **.69**

**BISMA-REX MATES** Antacid tablets for acid indigestion. .... **.89**

**REXALL BISTACALMA CREAM** Contains antihistamine and calamine. .... **.87**

**REX-SALVINE FOR BURNS** Grease quick, cooling relief. 1/2 oz. tube. .... **.57**

**V-10 MULTI-VITAMIN FORMULA** Rebuilds, restores body from supplies. .... **1.98**

**CARA NOME COLOR SHAMPOO** Takes minutes, lasts months! 12 generous shampoos. .... **1.25**

**CARA NOME NATURAL CURL SPRAY HAIR NET** Keeps hair "picture perfect." No lacquer - no drying. .... **1.25**

**PONDS GOLD CREAM** .... **.43**

**LYDIA PINKHAM COMPOUND** 7 ounce bottle. .... **.89**

YOU CAN DEPEND ON ANY DRUG PRODUCT THAT BEARS THE NAME **REXALL**.

**BRADLEY REXALL DRUGS**

**GOOD HEALTH TO ALL FROM REXALL**

33323 Grand River GR. 4-3123