

JAYCEE ROAD-E-O
APPLICATION FORMS
NOW AVAILABLE

Application blanks for the annual Teenage Road-E-O, sponsored by the Farmington Junior Chamber of Commerce, to be held May 13, are now available at the Farmington Junior and Senior High School principals' offices, officials stated.

Written tests will be required for all teenagers wishing to compete. The first testing will be given on Thursday, May 3, at the high school.

All teenagers of the community are eligible to take part in the Road-E-O provided they have a driver's license or permit and have not had any moving traffic violations for the six month period prior to making registration.

James Whitman, Family
Return From Germany

Specialist 3/C James Whitman and his wife, Barbara, and their daughter, Nancy, returned recently from Augsburg, Germany, where James has been stationed for the past year with the 5th Infantry.

Whitman has now completed his two year service obligation. The Whitmans will remain in Farmington until late summer when they will go to California. James, a 1934 graduate of Michigan State, will take advanced courses at U. C. L. A.

More than 41 per cent of the deaths and more than 35 per cent of the injuries due to motor vehicle accidents last year occurred on Saturdays and Sundays.



STILL TALKING about the tasty food and snacks served at the Eagle School PTA Spring Fair and the many shows and attractions offered is the large turnout of young and old who attended. Shows stopping for a snack of cheese and crackers at the Old Country Store were Mrs.

Knight and her son, Kirk, of Franklin Knolls. Presenting the taste delights was James Fleming, a chief cook. According to reports, the first without fail sponsored by the PTA was a huge success. Proceeds will be used to help sponsor various PTA projects.

COUNTY ASSESSING
ASSOCIATION NAMES
NEW OFFICERS

The annual business meeting of the Oakland County Association of Assessing Officers was held last week in Pontiac with officers being elected for the coming year.

Leonard Watchowski, administrator for the City of Lathrup Village, was named as president. Others elected were: Frazer Staman, Novi Township Supervisor, vice president; Theodore Koella, Jr., City of Sylvan Lake Assessor; treasurer; and Herman Stephens, equalization staff officer, secretary.

Elected to the executive board were: Howard Crenshaw, City of Berkley Assessor, three year term; Frank Voll, Oakland Township Supervisor, two year term; and George Kostishak, equalization staff, one year term.

Clarenceville Schools Experience
Record Enrollment Increases

Statistics issued recently by the Clarenceville School District revealed a record enrollment increase of 496 students during the period between 1950 through 1955.

The enrollment in all grades for the current school year was 1935 as compared with an enrollment of 1439 students in 1950. In 1950 38 classroom teachers were employed as compared with 61 employed at the present time.

1209 students are now enrolled in the elementary grades and 717 in the secondary grades, seven through twelve.

By the end of the 1956-57 school year, it is estimated that enrollment will swell to 2300 pupils. Of this total, it is estimated that 1450 will be elementary students and

850 will be secondary school students. It is anticipated that an additional 14 teachers will be required to handle the enrollment increases.

That growth is heavy is borne out by the fact that there will be only 75 students lost through graduation this year while it is estimated that 220 new kindergarten students will be enrolled at the beginning of the next school year.

Construction of 248 homes in Heartstone Subdivision and another 160 housing units in the southeast quarter of Section One of Lonia will account for a big enrollment jump, school officials indicated. Builders expect to complete at least 108 homes in Heartstone Subdivision, between Botsford and Central Elementary Schools, before classes begin next fall.

It is estimated that the capacity of students in the four present elementary buildings is 1366, with accommodations for 198 students to be provided in the Botsford addition. These totals include kindergarten students on half-day sessions. A breakdown shows Edgewood School can handle 255 students; Central, 345; Botsford, 462; and Westbrook, 284.

School officials have indicated that approximately 650 students can be handled in the present Junior-Senior high school building. If estimates are correct for the coming school year, accommodations will be needed for an additional 200 students.

Edgewood P.T.A.
Youth Recreation
Talk, Film Planned

The Edgewood P.T.A. which will meet Thursday, May 3, will hear talk on the variety of opportunities available for children taking part in the summer recreation program to be given by Mr. Thuis. The meeting will be held in the Edgewood School multi-purpose room starting at 8 p.m.

Pictures taken by Mr. Larue of previous Park and Recreation activities and the youngsters taking part in them will be shown. Lunch will be served at the close of the meeting.

Clarenceville area residents are reminded of the Edgewood P.T.A.-sponsored Spring Dance to be held Saturday, April 28, in the Clarenceville High School gymnasium.

Dancing will start at 8 p.m. and continue until 11:30 p.m. Efforts are being made to encourage as many alumni as possible to attend the dance.

Tickets may be obtained by calling GR. 4-2889 or may be purchased at the door the night of the dance.

Douglas Byron Places
Third In Golf Meet

A report from Olivet College last week disclosed the Douglas Byron of 2152 Tulane Street, Farmington, had placed third in the annual Frank Ham Golf Tournament for all Olivet College students.

A total of 61 boys took part in the competition this year at the Alwyn Downs Golf Course in Marshall, Michigan. An 18-hole handicap tournament was played.

For placing third in the tourney, Byron received three golf balls as a gift.

FRANKLIN CHURCH
NAMES COMMITTEES
FOR COMING MOVE

Edward Green, chairman of the Franklin Community Church board of trustees, has announced the appointment of two new committees as the date nears when the congregation will start worshipping in the new church on the Village Green.

Heading a working committee to organize steps to create a lawn about the new building is Ray Adams. Others on the committee are Norman E. Kreider, Charles Blood, Kenneth Bristol and Bert Wood.

Rudolph Hanson will be chairman of a committee to organize the moving of equipment and supplies from the old to the new church. Assisting him are Robert Yingling, James Keane, Doyle Tippit and Harry Lang.

A time moving date is anticipated but an earlier use of the building is scheduled for May 24, when the Colonial Dinner will be held at the new site.

Tulip Festival Bus
Slated For May 19

Reservations may now be made locally to attend the Tulip Festival in Holland, Michigan, from May 10 to May 19, it was disclosed this week.

A Greyhound bus has been contracted by the Grace Lutheran Church of Farmington to take residents of this area on Saturday, May 19. A total of 15 buses will make up the Lutheran Caravan to Holland on the final day of the festival.

Persons wishing to make the trip are asked to contact Mrs. Ella Plichter, local leader. Telephone reservations may be made by calling GR. 4-4949.

Remember...
OUR LADY OF SORROWS
MINSTREL - MUSICAL
April 28, 29 and 30

Susanne Runde Named
To M.S.U. Handbook Staff

Miss Susanne Joan Runde, sophomore, daughter of Mr. and Mrs. Byron A. Runde of 32045 Valleyview, Farmington, was recently appointed to the staff of "Helix," the student orientation handbook at Michigan State University. The handbook is sponsored by the M. S. U. student government, the associated women students and Blue Key, men's honorary.

Miss Runde is a graduate of Farmington High School.

Excessive speed was the principal cause of traffic accidents in 1955.

John Clappison Sells Insurance
Phone GR. 4-3511

WALLPAPERING?
Cranston Paint Shop
31185 W. Ten Mile
Near Orchard Lake Road
GR. 4-2074

Learn...

HOW CHRISTIAN SCIENCE HEALS—
how the power Christ Jesus used helps you solve your problems.

Free Lecture Entitled
"HOW CHRISTIAN SCIENCE
MAKES GOD'S
POWER AVAILABLE"

Arnold H. Exo, CSB, of Chicago
Member of the Board of Lecturers of The Mother Church,
The First Church of Christ, Scientist, in Boston, Massachusetts

April 29 — SUNDAY — 3 p.m.
Eighth Church of Christ, Scientist

20811 GRAND RIVER AVENUE
AT EVERGREEN ROAD, DETROIT

MICHIGAN BELL



ONE GOOD EXAMPLE of how telephone research benefits all of us is the amazing transistor. This versatile marvel, an electronic amplifier, was conceived, invented and developed at Bell Telephone Laboratories. As development progresses,

transistors are replacing vacuum tubes in more and more telephone equipment. Tiny and mechanically simple, transistors last longer than vacuum tubes and need little power. These economical features help keep down the cost of providing telephone service.

WHAT DO YOU have planned for, say, next week end? Perhaps a drive to see some friends or relatives in the next town. Or maybe you're going to spend a quiet two days at home. Either way, the telephone can help you enjoy your week end. If you're planning a visit, call ahead and let the folks know just when you'll be there. And if you're just going to loiter around the house, wouldn't that be a good time to talk to those out-of-town friends or loved ones? Telephone calls cost so little and they are so appreciated.



BREAKFAST IN BED is one good example of luxurious living. But that's a luxury most of us can't often afford. A bedside phone on the other hand is a very inexpensive "luxury." For about \$1 a month you enjoy the comfort and convenience of an additional telephone at your finger tips. It will mean the end of stumbling around when you make or get calls at night—you just reach for the phone. To order your bedside telephone, call our Business Office.

DRESS UP YOUR HOME FOR SPRING
CUSTOM MADE
TRAVERSE DRAPERIES
SLIP COVERS and
RE-UPHOLSTERING

Select Fabrics in the Comfort of Your Home

UPHOLSTERY FABRICS
Nylon Matelasse
Imperted Matelasse
Nylon Textured Boucle
Chromespan Mohair Tweed
Nylon Warp Tapestry
Brocades
Bemberg Twill
Satin Back Friese Velvet
Antique Velvet
Nylon Frizze

DRAPERIES and SLIP COVERS
Fortisan
Fibreglass
Plaids
Prints
Stripes
Moderns
Traditionals

All First Quality Fabrics
FREE ESTIMATES
Day or Evening Appointments
Just Phone
GR. 4-3661

Clarence W. Morrison
22398 Ruth
Farmington, Mich.

FIREPLACE SCREENS
CUSTOM STYLED
(ON OUR OWN SHOPS)
To Fit Any Style Fireplace
Free Estimates at Your Home
— QUICK SERVICE —
MAYFAIR 6-3411
THE NORTHWESTERN CO.
32732 Northwestern Hwy., at 14 Mile Rd.
Farmington Township

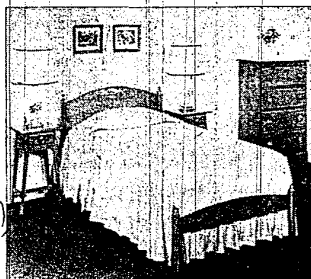
Michigan's Finest Rug Cleaning
Comes To FARMINGTON!

For 63 years, Detroiters have relied on Star to make their dirty rugs absolutely clean, beautiful and new-looking. Now Star is making regular pickups and deliveries in Farmington. So now you, too, can enjoy Michigan's finest rug cleaning at economical cost by phoning Lorain 7-3400.

STAR
CARPET CLEANING CO.
Lorain 7-3400

SALE NEVER TO BE REPEATED!

Never again will you have the opportunity to purchase quality furniture at such low, low prices. We cannot guarantee quantities to last, so come in as soon as possible. Sale positively ends Saturday.



Genuine Winston Salem Suite
Beautiful solid rock maple pieces finished in warm nut brown, quality construction throughout. Suite consists of full or twin sized bed complete with footboard and a large toy-drawer chest.

Regularly Priced at \$79.95
SALE PRICED \$49.95
A very large Mr. & Mrs. Chest only \$10.00 additional. Other pieces at low, low prices.

SPECIAL TERMS \$5.00 DOWN, \$5.00 MONTHLY

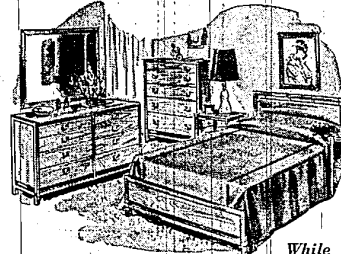
BEAUTIFUL LOUNGE
ROCKER

that swings as well as rocks. Truly beautiful fabrics in a wide choice of colors. Foam Rubber, reversible cushion.

Nat. Adv. Price \$89.95

NOW \$49.95

Special terms — \$5.00 down, \$5.00 monthly

CLOSING OUT ALL
BLOND BEDROOM
SUITES

Five different suites to choose from. Bookcase headboard bed, large dresser and mirror and a fine large chest.

Nat. Adv. Price — \$229.95

\$159.95

While They Last

The Pleasure & Leisure SHOP

Modern and Colonial Furniture
22384 Grand River
Open Monday, Thursday, Friday and Saturday Evenings
Phone: KE. 1-7300