

A Subscription to The Enterprise Will Enable You to Keep Abreast of The Farmington Area's Progress.

FORDS

1956 DEMONSTRATORS
and USED CARS

\$169.00 DOWN

\$52.20 Per Month

Up to 36 Months To Pay

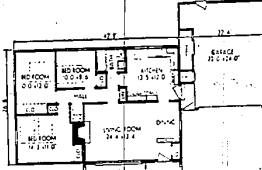
BERLING - McHUGH, INC.
GR. 4-1234

Ask For FRANK or BILL

just the **PLAN**
for you...

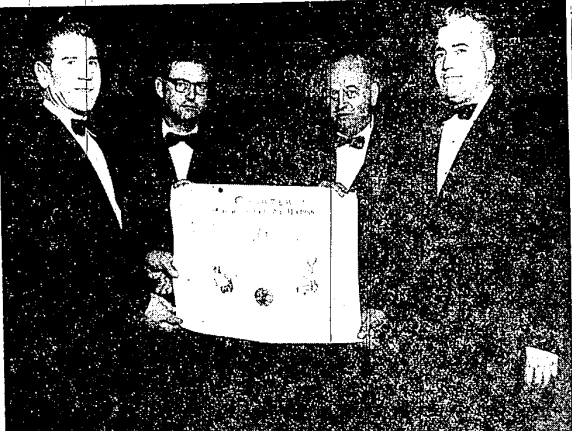


PLANS MATERIALS FINANCING



FARMINGTON LUMBER COMPANY

32800 Grand River GR. 4-4015
in NOVI
43755 Grand River Phone Northville 308



A CHARTER was officially presented recently to newly organized Farmington Elks Lodge 1986 in ceremonies conducted by officials of Royal Oak Elks Lodge 1523 with State Elks Association heads in attendance. Hurling up the charter following official presentation are, left to right, John Miller, Exalted Ruler of Royal Oak Lodge 1523; Francis J. Buttermore, Exalted Ruler of Farmington Lodge 1986; Alfred Tillin, Esteemed Leading Knight of the Farmington Lodge; and Frank Hanson, Past Exalted Ruler of the Royal Oak Lodge. Officials of the Royal Oak Lodge also conducted a formal initiation ceremony during the evening program.

NATURAL BEAUTY

The strong interest in the natural beauty of genuine hardwood plywood is shown in the names that various manufacturers have given their finishes on their furniture items—names like spicewood, platinum, pumice, nutwood, fruitwood and so on.

Subscribe to The Enterprise



Silver Lighter
Philip B. Thomas
JEWELER
23619 Farmington Road
GR. 4-4061

Worthwhile County Agencies Benefit From United Fund Contributions

When giving to the United Fund Drive that kicks off on October 15, besides your township mothers, agencies and those included in the Michigan United Fund, you will also be helping in support the work and programs of seven agencies in Oakland County.

You will be giving to the Salvation Army, whose perhaps most workmen task is the rehabilitation of the man who has fallen from family life, to work with unmarried mothers, to provide good boarding homes for children that need them and to handle adoption. You will benefit by your contribution to the United Fund from society because of alcohol. The Oakland Child Guidance Clinic, whose major service is the diagnosis and treatment of emotionally disturbed children to ward a happier future, will be a part of their program. Other agencies of the program include the St. Joseph Mercy Hospital Clinic to provide mental care by the best of Oakland County's professionals to those persons who are unable to receive such help in other ways.

All of these services are offered to the individual in need, regardless of his station in life or the circumstances in which he finds himself. Only with the cooperation and assistance of the public-minded citizen can these agencies be continued in our community, through the United Fund, officials concluded.

Forest Fire Losses Being Held At Minimum

A perfect week of fire prevention was recorded last week, with no fires reported on state and private lands in Michigan. To date this year 2,000 acres of state and private forests and grasslands have been damaged by fire. The figure compares with 2,350 acres damaged during the same period in 1954. Michigan's best forest control fire year. Last year the loss total for the same period was 6,530 acres.

These figures do not include damage on lands administered by the federal government.

John Clappison Sells Insurance
Phone GR. 4-3511

ADVERTISEMENT FOR BIDS

CLARENCEVILLE PUBLIC SCHOOLS
29210 Middlebelt Road
Livonia, Michigan

REQUEST: Sealed bids for High School, Stage 12 consisting of approximately 28,000 sq. ft.

Bids will be received to October 11, 1956, 8:00 p.m., Eastern Standard Time, at the present Clarenceville High School, 29210 Middlebelt Road, Livonia, Michigan at which time they will be publicly opened and read.

ACCESS TO PLANS: Office of the Superintendent, 29210 Middlebelt Road, Livonia, Michigan. Office of the Architect, W. T. Anick & Associates, 23900 Washtenaw, Ann Arbor, Michigan. F. W. Dodge Corporation, Detroit, Michigan. Builders & Traders, Detroit, Michigan.

Plans and Specifications may be secured of the Architect or the Superintendent of Schools upon deposit of Twenty Dollars (\$20.00) which will be refunded upon return of same.

RANS OF BIDDING: One General Contract including all trades.

All bids must be accompanied by a Bid Bond, Cashier's Check or a Certified check, without restrictions of the Percent (5%) of the Bid submitted, made payable to the Board of Education.

All plans and Specifications shall be returned at time of bidding. Contractor shall identify with his name each plan and specification, which will be used as a basis of signed contract set. No Bid shall be accepted from any Contractor unless this item is fulfilled.

The Board reserves the right to reject any and all bids and to waive any irregularities when in the opinion of the Board such action will serve the best interests of the School District. No bid may be withdrawn after closing time for a period of thirty (30) days.

Successful Bidder will be required to furnish One Hundred Percent (100%) Performance, Labor and Material Bonds.

CLARENCEVILLE PUBLIC SCHOOLS
Livonia, Michigan

By William G. Lawason
Secretary of Board of Education.

Sept. 27 - Oct. 5

New Convalescent Hospital Opened In Area

The new Kenwood Convalescent Hospital has now been opened at 20200 Farmington Road by Dr. Richard Drake, D. O. Prior to this time Dr. Drake practiced general medicine in an office at 24-045 Schoolcraft for six years.

The new home will serve 16 bed patients and will have all the conveniences available to bring about rapid recovery. Dr. Drake said. Cases of strokes, cardiacs, cancer, fractures and post-operative care will be specialized in. Doctor Drake said that he has an ambition of making the convalescent hospital one of the outstanding and bright spots in this section of the country. He will continue his present general medicine practice.

The great \$99,800,000 bridge under construction across the Mackinac Straits will set two records. It will be the world's costliest bridge and, from anchorage to anchorage, the world's longest suspension bridge. It will be opened in 1957.

FOR FULLER BRUSHES

+ +
Call
KE. 3-1559

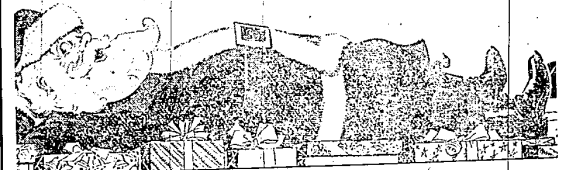
By rigid discipline through the years, we managed to live within our income, and then they add a dime here and a quarter there to the price of everything and we became discouraged.

The farmer is covetous of his dollar, and with reason—he knows how many strokes of labor it represents. His bones ache with the day's work that earned it. —Ralph Waldo Emerson.

Flock owners!
get your
Bonus Silverware
here

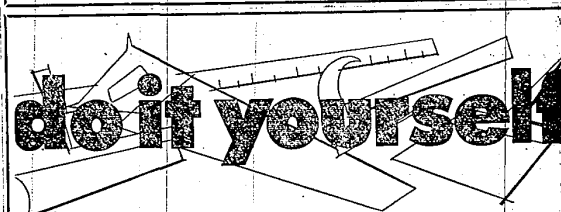
Costs you nothing extra for this exciting 3-piece Queen Bees Pattern table setting when you order your first Yeton of Larro SureLay at our store in September. Coupons for this same beautiful silverware are packed in every sack of Larro SureLay—to help you complete the set.

See us for details!
FARMINGTON MILLS
L. F. GILDEMEISTER, Owner
33408 State St. Farmington
Established 1893 GR. 4-3334



Easiest way to shop for Christmas...
LAY-AWAY
Time At

MAC'S 5c to \$5 STORE
GR. 4-4412 S. TRACEY, Owner 33317 Grand River
OPEN Friday and Saturday Evenings to 9 p.m.



do it yourself

CUT COST ON HOME REPAIR

A CUMMINGS Home Work Shop

SEE IT IN OUR SHOW WINDOW

A 1/4" DRILL COMBINATION

Includes a SAW, LATHE and DRILL STAND

WAS \$79.95 **Sale Price \$39.95**

AN IDEAL CHRISTMAS PRESENT FOR DAD AND SON

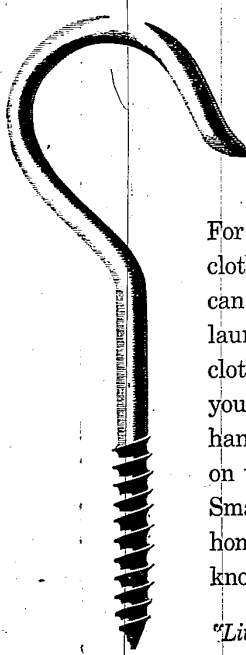
GET READY
GET SET
GO HUNTING

With the Right Kind of Equipment . . .
Our Guns and Shells are Top Quality; they will add fun to your hunting!

BY REQUEST: OUR FALL SALE CONTINUES

+++ + + + +

HATTON'S FARMINGTON HARDWARE
PAT BUTTERMORE F. M. BUTTERMORE
33316 Grand River GR. 4-2454



For the price of 2 clothesline hooks* you can dry 2 loads of laundry in an electric clothes dryer. And you'll never have to hang heavy wet wash on the line again. Smart and thrifty homemakers know how to...

"Live Better... Electrically"

*Based on an average price of 2 for 10¢

SEE YOUR DEALER OR DETROIT EDISON