

Clip and Save: 1964 Grid Schedules for Area Gridders

Bentley Coach Larry Joiner Sept. 18—Farmington, 8 p.m. Sept. 25—At Dearborn, 4 p.m. Oct. 2—At Plymouth, 8 p.m. Oct. 9—At Belleville, 8 p.m. Oct. 16—Trenton, 8 p.m. Oct. 23—At Redford Union, 8 p.m. Oct. 30—At Allen Park, 8 p.m. Nov. 7—At Franklin, 2 p.m.	Plymouth Coach Mike Hoben Sept. 18—Northville, 8 p.m. Sept. 25—At Farmington, 3:30 p.m. Oct. 2—At Dearborn, 4 p.m. Oct. 9—At Trenton, 8 p.m. Oct. 16—At Redford Union, 8 p.m. Oct. 23—At Allen Park, 8 p.m. Oct. 30—At Belleville, 8 p.m. Nov. 6—Walled Lake, 8 p.m.	Thurston Coach Bill McDonald Sept. 18—Southfield, 2 p.m. Sept. 25—At Highland Park, 2 p.m. Oct. 2—At Oak Park, 4 p.m. Oct. 9—At Franklin, 2 p.m. Oct. 16—At Groves, 2 p.m. Oct. 23—N. Farmington, 2 p.m. Nov. 6—At Redford Union, 2 p.m. Nov. 14—Hamtramck, 2 p.m.	Clarenceville Coach Ralph Tenby Sept. 18—N. Farmington, 8 p.m. Sept. 25—At Brighton, 8 p.m. Oct. 2—Northville, 8 p.m. Oct. 9—West Bloomfield, 8 p.m. Oct. 16—At Clarkston, 8 p.m. Oct. 23—At Bloomfield Hills, 8 p.m. Nov. 6—At Redford Union, 8 p.m. Nov. 14—Hamtramck, 2 p.m.	St. Agatha Coach Dave Brazil Sept. 18—Immaculate Conception at Hamtramck, 8 p.m. Sept. 25—Our Lady of Sorrows, 2:30 p.m. Oct. 2—Waterford OLLH, 2:30 p.m. Oct. 9—Oak Park St. Mary's, 2:30 p.m. Oct. 16—At St. Frederick, 8 p.m. Oct. 23—At St. Michael, 2:30 p.m.	Farmington Coach John Hayes Sept. 18—At Bentley, 8 p.m. Sept. 25—At East Detroit, 8 p.m. Oct. 2—Pontiac Northern, 3:30 p.m. Oct. 9—Walled Lake, 3:30 p.m. Oct. 16—At Dearborn, 4 p.m. Oct. 23—At Waterford, 8 p.m. Oct. 30—At Roseville, 3:30 p.m. Nov. 6—Southfield, 3:30 p.m. Nov. 13—At North Farmington, 3:30 p.m.	Franklin Coach Bob Bentley Sept. 18—Cherry Hill, 2 p.m. Sept. 25—At Redford Union, 8 p.m. Oct. 2—At Groves, 8 p.m. Oct. 9—Thurston, 2 p.m. Oct. 16—Wayne Glen, 8 p.m. Oct. 23—Oak Park, 2 p.m. Oct. 31—At N. Farmington, 2 p.m. Nov. 7—Bentley, 2 p.m. Nov. 14—Wayne, 2 p.m.	Our Lady of Sorrows Coach Bud Webster Sept. 20—At Waterford Our Lady of Lakes, 8 p.m. Sept. 27—St. Agatha, 8 p.m. Oct. 4—St. Fredericks, 8 p.m. Oct. 11—At St. Michael, 8 p.m. Oct. 18—Orchard Lake St. Mary, 8 p.m. Oct. 25—St. Gertrudes, 8 p.m. Nov. 1—Royal Oak St. Mary's, 8 p.m. Nov. 8—At Ann Arbor St. Thomas, 8 p.m. All games at 2:30 p.m.
---	--	--	---	--	---	---	---

Bentley, Farmington To Battle In Opener

Farmington vs. Bentley at Bentley High Friday evening.

It shapes up as an interesting high school football opener for both sides.

Reason: Both teams are hopeful of bouncing back on the prep grid scene after some tough going in recent years.

If there's an edge on the eve of the game it would appear to belong to Farmington, which boasts a solid backfield of veterans while Bentley is best with some problems, especially at the quarterback slot.

Coach John Hayes at Farmington, who has seen his charges win only seven times in the last four years, presently bemoans two facts: Lack of weight on his team and a murderous schedule.

He'll present an experienced backfield with Ron Cleveland at quarterback, Dick Johnson at left half, Roy Leach at full and Bruce Charles at right half.

Behind them are Dick Isbell and Ray Lardie, the latter back after missing the '63 season with a broken leg. Ron Short and Mike Wilson could help — the Wilson young man with his fine passing.

Hayes also is grooming some "fun" for the opposition. With capable runners and passers in the game at the Farmington line, he has played some quarterback and heaved the ball well a year ago, there's no telling who might be about to run or pass.

"Maybe we can startle our rivals that way," adds Hayes. The veterans in the Farmington line will include Tom Mitchell and Terry Neilson at the ends; Keith Collins and Rick Leach at the tackles; Mike Freeman and King O'Connell at the guards, and Mike Parry, a linebacker.

Bill Crane, out most of last year with injuries, is on deck to lend experience at center.

The weight problem at Farmington boils down to one shocking figure. Lessway is the only 200-pounder up front.

"I hope the rivals don't wear us down," adds Hayes.

Over at Bentley, where Coach Larry Joiner is eager to get his forces off on the right foot after a 2-5-1 season in '63, he still is working between Nick Bonder, a junior, and Harvey Jaksch, a senior, as his quarterback.

"I think we'll just have to try both of them under fire," said Joiner, "to see which is the best man to handle the job."

There are nine veterans on the Bentley roster. They are Backs Phil Maynard, Mike Matern, John Plumley, Dennis Lopez and Bob Lucas.

In the line, the holdovers are All League Dick Larsen, guard last season, but now a tackle; Tom Doll, a guard; Ken Cox at center and John Harrison at end.

"We're going to have to learn in a hurry," adds Joiner, who so far has been impressed by the bustle and the desire of his squad — especially the inspiration provided by the newcomers.

Joiner warns Bentley followers not to be shocked by any mistakes during the early going.

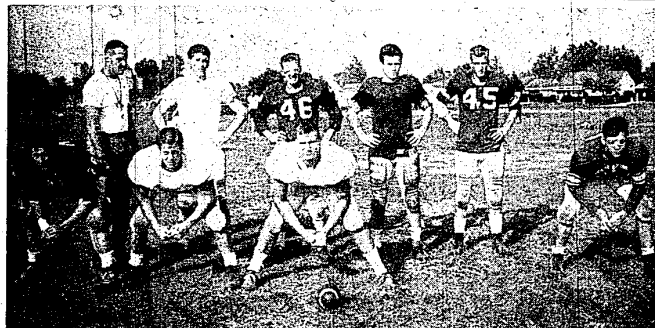
"One has to remember that the bulk of our squad is composed of sophomores," says the coach. "Then, too, neither of our two quarterbacks is a letterwinner. They'll have a lot of pressure on them."

All of which explains why the first game shapes up as vitally important to Bentley — and to Farmington.

After the recent losing season at both schools, happy beginning can make all the difference as the fall season progresses.

"If you lose — and badly — well, neither coach wants to think negatively at this time of the year.

Kickoff Friday is slated for 8 p.m. on the Bentley gridiron.



FEW HOLES remain to be filled before Bentley High football coach Larry Joiner has his team ready for Friday's 1964 opener against Farmington under the lights on the Bentley High field. Joiner is shown with eight returning regulars from last fall — but there are three big gaps in the line. The group includes (line, from left): Tackle Rich Larsen, Guard Tim Doll, Center Ken Cox and End John Harrison; (backfield, from left): Coach John Joiner, Halfback Phil Maynard, Fullback John Plumley, Halfback Mike Materna and Halfback Bob Lucas.

Awaiting Debuts Two New Coaches

All coaches are nervous at the outset of a new season.

But for Bob Bentley and Bill McDonald these are particularly anxious moments.

That's because, come Saturday, both will make their debuts as head football mentors.

Bentley at Franklin High and McDonald at Thurston High.

Neither is a stranger to the coaching ranks. Bentley long has been identified with basketball powerhouses — first at Bentley High School and then at Franklin.

McDonald, too, has a basketball background. He coached the varsity at Thurston a few years back, before moving to Junior High in the South Redford district.

To "relax" a little from the rigors of varsity competition, But the urge of varsity coaching got to McDonald and when Gordie Young resigned last summer to devote full time to running Thurston's sports program, McDonald happily accepted the appointment and became only the school's second grid coach in his history.

Both Bentley and McDonald talk in about the same vein as they prepare for their Saturday afternoon home openers.

Franklin entertains Cherry Hill while Thurston engages Southfield.

The kickoff in each instance will be at 2 p.m.

"This is a challenge for me," says Bentley. "I always have liked football. I assisted at Bentley and at Franklin, and always looked forward to the day when perhaps I might take over a football team and run it."

Over at Thurston, McDonald commented: "This is a great break for me. We have fine football talent in Thurston. I've helped in football in the past and I must admit, I hoped the day would come when I had a chance to be a head coach in football."

By coincidence, both Bentley and McDonald find themselves in the same league — the Northwestern — in which North Farmington also is a member along with Birmingham Groves and Oak Park.

Clarenceville To Greet N. Farmington Gridders

Something must give right off the bat Friday night when North Farmington invades Clarenceville (8 o'clock) to lift the lid on the 1964 football season for both high schools.

Both coaches—Ralph Tenby at Clarenceville and Red Holland at North Farmington—envision possible winning seasons.

A "winner" would be something new at Clarenceville. When the school won its 1963 finals, it marked the first time in two years Clarenceville had triumphed on the gridiron.

"While we lost several boys," says Coach Tenby, "we sense a new spirit on this team. The great number of new boys on the team seem to inspire those who are returning."

Danny Freels is slated to guide the Clarenceville attack from the quarterback slot. He played the post during most of the '63 season. Right behind him are Dave Wilson and Chuck Watkins.

Jim Bedson, last year's speedster, is back. So is Chris Hawley, who worked mostly on defense in '63 but now will go both ways.

Mike Nye, a sophomore; Ray Parker, junior; Paul Murrell, junior; Larry Martin, sophomore, and Larry Ray, senior, also are contesting for backfield posts along with Rich Hahn, a senior fullback.

In the front wall, Tom Nelson, a junior and Gary Voth, a senior, have returned. But sophomores Jim Amick and Ron Ray have done a good job in practice and will be seeing considerable service.

At the tackles, there are Jim Prisk and Fred Welton, juniors; John Harrison and Randy Smith

R. Union Unveils New '11'

Football Coach John Rogers of Redford Union high school doesn't like to sing a dull tune.

He'd rather warble a merry song — especially when it comes to his grid squad.

But, he has little choice at the moment.

With only five veterans around with whom to build, Rogers has his work cut out for him.

"It could be a long fall for us," says Rogers, as Redford Union gets ready to start the season against Redford in a non-leader Friday night at RU.

RU will start with Harry Kendrick at quarterback and Mike Fritz at one end. They make one of the best passing combinations around these parts.

Eric Bargo at fullback will give the RU team a nifty runner. In the line, Charles Strock at tackle and Bill Melvin at guard will lead the way.

The rest of the lineup will be comprised of comparatively new faces — names like Terry Shiner, Jimmy Johnson, Rick Carson, Bill James, Ray Wisner, Keith Hirvonen and Bob Gigolotti.

"We get off to a good start Friday night by facing a team we might lose some folks," adds Rogers.

"But the way it looks now, we'll have to fight uphill most of the time this fall."

"Hazel" To Give Punt, Pass Tips At Wonderland

A 20-minute color movie featuring AV comedienne Shirley Booth will be shown Saturday, Sept. 19, in the Wonderland Center Civic Room.

The film, produced by the Ford Motor Company to acquaint youngsters with the National Football League's "Pass, Punt and Kick" contest, will be shown continuously from noon to 8 p.m.

Miss Booth is the star of "Hazel," popular television series.

The Pass, Punt and Kick contest in this area will be held at Wonderland Center. Youngsters interested in competing can register now at Bill Brown Sales, Livonia Ford Dealer.

Let the other fellows' experience be your best teacher.

John Page or Soph Barry Simms gets the call at quarter isn't certain.

The only certainty is that Pate Naresse, a hard-driver, will be at fullback. He's the lone returning backfield vet.

Over at Franklin, Coach Bentley has a reverse situation. He has the backs — but not the line.

In fact, Bentley says he'll have a terrific backfield. Don Wagner and Bernie Carbo are fighting it for the No. 1 quarterback job. It'll be either Sam Antozzo or Larry Nufsch at left half. Ken Bruchterman has moved over to right half where Roger Frayer is contesting him for the regular spot.

At fullback, Franklin is three deep — Larry Yenish, Ron Hively and Gary Rogalski.

In the line, Franklin will pre-

(Continued on Page 3)

Sorrows Eyes Tough Going

Seven and nothing in 1963 — and the divisional champs!

This year it's going to be much different for Farmington Our Lady of Sorrows' football team, under the coaching of Bud Webster.

"Graduation just wrecked us," declared Webster as he prepared his charges for next Sunday's opening game at Waterford's Our Lady of the Lakes.

"I'd say we'll be lucky to finish with a 5-6-5 record this season," the coach continued.

Webster was quick to admit that he wasn't singing a gloomy note just to keep pace with other members of the coaching profession.

"Those who know me will tell you I call 'em as I see 'em," explained the coach. "Last year, I expressed optimism from the start. I knew we had ourselves a good team. This year, it's just a much different story. You

can't win with a lot of inexperienced players."

In a nutshell, Webster described most of his players "as green as grass."

Sorrows does have some fine talent around, although it's on the short side.

There's Mike Bars, 6-4 and 215 pounds at center. His coach calls Bars the "best Class C center in the state."

Guards Pat McPeak at 100 and Tony Stencil at 155 both are four-year men on the Sorrows' varsity.

These three constitute the only veterans up front.

In the backfield, Myles Kearney, 175 pounds, shapes up as the key man. He'll do the passing, running and punting. Or at least most of it. He, too, is another four-year performer on the varsity.

Dennis Connelly, in his third year, never has been a regular. This 185-pounder is coming along fast in his bid to become the first string fullback.

Mike Bloomin, 176-pound tackle, has no previous offensive experience. This year he will have to go both ways. It's still a question whether Jim Keason, first string tackle who is recovering from a broken leg, will be of any service.

Tommy Hornes, a sophomore, has excelled in early work at tackle while Rick Korte, shifted from defensive back, tops the end candidates. The Sorrows' team suffered heavily in losses at end — with the four top 1963 men at the post all graduating.

Bob Urbane, a leading candidate for quarterback, is handicapped by a broken thumb. This could mean that either Jerry Turner, who weighs only 120 pounds, and Jim McGrath (145) will handle Sunday's opener.

Jim Barnes, 155 pounder, rates as a fine wingback who should be seeing considerable service.

Webster is no novice at coaching. Before coming to Sorrows, he guided teams in New York, Florida, Massachusetts and New Hampshire.

He has helped this season by Herb Coleman, a one-time star at Notre Dame. Coleman's son, Mike, starred at Sorrows last season and now is at the University of Pittsburgh.

FLAT ROCK SPEEDWAY
SATURDAY, SEPT. 12
Season's Championship
Late Model & Figure 8's
Last Show of Season
Qualifying 7:30
FIRST RACE 8:30
ADULTS 1.75
CHILDREN, 6 to 12 — 50c
1 mile south of Flat Rock
Right on Telegraph Road

ROCKCOTE PAINT CO.
Wishes Congratulations
And Success
FOR THE
GRAND OPENING
OF
HARDWARE & SUPPLY CO.

GOLF RANGE AUTUMN SPECIAL
2 for 1
2 Buckets For the Price of 1
SEPT. 16-21
OASIS GOLF CENTER
3950 S. MILE at ECKLES
also Miniature Course

AIR SHOW
BILL BARBER
4th ANNUAL EEA
Dawn Patrol
Sept. 25 & 27, 1964
Metropolitan Airport
Joy Rd. and Lillian
PL 240776, Mich.
ADMISSION \$1 Adults
CHILDREN UNDER 12 FREE

PRIVATE GOLF & POOL CLUB
Memberships Available
Unlimited Golf or Pool Privileges—No Daily Fees
No Initiation Fee Now — Pay Dues 12 Months of the Year
Member Golfing — \$25 Per Month
Member Golfing and Family Pool — \$35 Per Month
Member and Family Golfing — \$45 Per Month
Member & Family Golfing & Family Pool — \$65 Per Month
Social-Family Pool plus locker fee
For Information—Write, Visit or Phone GL 3-7272
Fox Hills Country Club, Plymouth, Mich.
4 Miles West of Plymouth on N. Territorial Road