

Good Landscaping Raises Value of All Dwellings

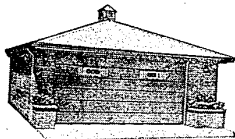
If you're going to build next summer, don't put it all in the house. Leave something over for landscaping.

This is the advice of Lester Lytton, outdoor living specialist, who points out that a well-landscaped house has a premium value in today's real estate market.

A modest investment in a sound landscaping plan at the time of construction can pay for itself many times over.

GARAGES CEMENT WORK

Hand Crafted Quality "From The Old School"



We Guarantee to Save You Money "Get The Bid Then Call Us"

We have no salesman to pay. Every job carries our five-year DIXIE quality warranty. We have our own cement crew with 25 years experience. We build in All Suburbs. All jobs sold by owners.

Northwest
KE 8-1220
9110 Telegraph
Directly across from
Korvett's store.
Drop in and see
our Models.
After 7 P.M. Call KE 8-6233

No money down — Up to 7 years to pay — FEA terms

West
PA 8-2050
North
LI 1-4475
Pentac
OR 4-0371

DIXIE

CONSTRUCTION COMPANY
General Contractor

Building or Remodeling?

It will pay you to consider the more efficient methods and the higher quality possible when you use the service of an experienced General Contractor.

• MORE KNOW-HOW • BETTER PLANNING

All types of construction . . . modernization—repair. Give us a no-obligation call. We'll be glad to talk over your particular problem. We may have the answer.

One of Our Many Trucks and Experienced Crews May Even Now, Be in Your Neighborhood.

NIEMELA CONSTRUCTION COMPANY
GENERAL CONTRACTOR
KE 5-8090 • GR 6-2864 • NO 2-5661 nights KE 5-8010
27776 GRAND RIVER, Farmington, Michigan

outlet, he says, will grow into a major asset over a 10-year period and set your house apart in a way you'll be proud of.

You needn't wait until the house is complete. Even while it is still in the planning stage, a landscape artist can be tremendously helpful in assuring the best eventual use of your land.

Then later, working with your architect or builder, he can create an outdoor area to complement the rooms and give you the added living space that is so important during the warm months of the year.

A paved patio or terrace should be a part of the original house plan to be sure it is properly related to living and dining areas.

A small structural change, like shifting a door or substituting a sliding glass panel for a window, will cost little or nothing if planned early but a lot if neglected till the house is finished.

A custom aluminum patio cover and screening will make this important area usable in all weather, day and night, and assure the family of maximum outdoor enjoyment this first summer.

If there is no landscape artist in your area, or if his services come too high for your pocketbook, you will find that the local nurseryman from whom you will probably buy your plantings can give you sound advice.

For information on patio covers, a free booklet is available by writing to "Avaling Booklet," c/o Bridgeport Brass Company, Bridgeport 2, Conn.

Eliminate Moving Woes, Get Booklet

If you may be moving this year, and your family is the one in six that will be another state, a free booklet is available that can eliminate a lot of the work and worry. The booklet explains about such matters as packing, unpacking, bills of lading, interstate moving rates and storage. It contains a check list of things to do before you move and after you arrive at your new address.

The booklet also contains a room by room inventory check list to help you ascertain the value of your furnishings for insurance purposes. For a free copy of the booklet entitled "Moving—It's Simple," write to Burnham Van Service, Inc., Columbus, Georgia.



APPLES, PEACHES AND PEARS were canned by home economics students at Bryant Junior High School in Livonia, and a class contest was held Friday to pick the best examples. Shown with teacher Miss S. Tellep and judges

Mrs. W. Geoghagan and M. Grabowski are, left to right, students Diane Foster, Norma Colsher, Sue Baranek, Sandy Bruff, Pat Raab, Denzil Wolf and Carolyn Hartley.

Few Rules To Increase Heater Life

Quality automatic water heaters are designed to provide years of dependable service—if they're treated right. Here are a few basic rules that will help you realize the most benefits from yours:

• Most important is the size of the heater purchased — it should be large enough to meet family hot water demands now as well as in the future. An undersized unit is more than just an inconvenience. It is well-known that the more frequently a tank is

heated up, the more it will corrode.

An inadequate tank must be heated over and over to provide everyday requirements, meaning that it will corrode and wear out much faster than a larger tank that would give the same hot water with far fewer heatings.

Ideally, water heaters should be no smaller than 40 gallons capacity.

• The heater temperature should be carefully regulated. Excessive temperatures (over

140 degrees) will needlessly increase operating costs as well as cause greater corrosion!

For longest life and lowest fuel expense, have your plumbing contractor adjust the temperature control to the proper setting.

• Every water heater should be equipped with a temperature and pressure relief valve—an automatic safety device that guards against excessive pressures or temperatures due to overheating or control failure. The relief valve should be operated manually every few months to be sure it is always in working order.

• About once a month, open the drain faucet at the bottom of the heater tank until the water runs clear.

Such regular cleaning will remove sediments, mineral deposits and rust accumulations at the bottom of the tank, reducing corrosion and increasing heating efficiency.

Further information about water heaters as well as other plumbing tips are included in a handy little booklet called "Plumbing Care and Repair." It can be obtained by sending 15 cents to the Plumbing-Heating-Cooling Information Bureau, 35 East Wacker Drive, Chicago, Illinois 60601.

Be Careful In Installing Bath Fans

Moisture is the villain in bathrooms. It loosens wall coverings and corrodes plated fixtures. A fan that has not only exhausts away steamy moisture-laden air but also odors.

Placement of bathroom exhaust fans is important. Best location is in the middle of the ceiling or on the wall opposite the door.

The fan pulls replacement air from under the bathroom door and sweeps through the room, carrying with it moisture and odors which are ducted to the outside.

A Memphis, Tenn. firm recently developed a bathroom exhaust fan that has multiple features. It not only exhausts moisture and odors, but also provides light and heat.

Tile Will Not Burn

If you're planning to remodel your kitchen, here's a point worth remembering:

For approximately \$2 more than you would normally spend you can transform an ordinary kitchen into a beautiful custom creation.

Since the kitchen is subjected to heavier wear than any room in the house, you will want to use durable materials such as ceramic tile on counters and backsplashes. Real tile is impervious to burns and scratches, so you

can place a sizzling pan atop it or carve on it with no fear of damage.

First select the tile you want from any of more than 250 colors and shades. Then order about one-fourth of the total tile area in contoured tiles—those sculptured patterns that give a three-dimensional effect.

You can create an attractive arrangement of these decorative tiles from any of dozens of layouts now available. The price difference between plain tile and contoured patterns is less than 15 cents per square foot.

Franchise Dealer for
"FLEXSCREEN"
and
"MODERNSCREEN"
Williams Co.
SPECIAL RECESSED SCREEN
Up to 36" wide, with Truvis
operator Free
Reg. \$27.50
\$19.95
Special of Raffle Plect Cordes
INKSTER LUMBER CO. 27540
MICHIGAN AVE. LO 3-1600

Fireplace Screens
CUSTOM BUILT IN OUR SHOP
WHILE YOU WAIT
Bring in measurements
FREE WITH CUSTOM SCREEN
OR \$1.00 Carpet Lap
Tote
LOG GRATE \$1.18
Special of Raffle Plect Cordes
Other styles and sizes
at discount prices.
FREE ESTIMATES
PHONE LO 3-1600
PA 2-1550
1 Block W. of Inkster Rd.
27540
MICHIGAN AVE. LO 3-1600

FENCE SALE!
LIVONIA FENCE CO.
Free Estimates
IMMEDIATE INSTALLATION
**CHAIN LINK
REDWOOD**
Call Day or Night
GA 1-0012
GA 1-2358

Rustic Stockade

HOME IMPROVEMENT SPECIALS!
PANELING
Unfinished MAHOGANY \$2.99
4x7
GUTTERS 99¢
10' 'K' Galvanized
CEILING TILE from 12 1/2¢
classic style
FABRIC FRAME SHUTTERS from \$159
Custom decorator
Partitions, Shutters
styling limited only
your imagination.
Special Order Only
PINE LUMBER
12222 INKSTER ROAD
1/2 Mile North of Plymouth Rd.
Mon. & Fri. 8 a.m. - 6 p.m.
Tues., Wed., Thurs. 8 a.m. - 6 p.m.
Saturday 8 a.m. - 5 p.m.
Sunday 10 a.m. - 4 p.m.
KE 2-9030
COMPLETE LINE OF BUILDING SUPPLIES

PRACTICALLY EVERYTHING
IN
"SLEEP WEAR"

THEIRS
HIS & HERS
THEM

• DESKS
• BUNKS
• TRUNDLE BEDS
• MAPLE - WALNUT - OAK

• BEDS
• HUTCHES
• LAMPS

For Your Convenience We Are Open Evenings 'til 9
531-1740 531-1740
BED - N - BUNK SLEEP SHOPPE
25014 PLYMOUTH ROAD

Observer Newspapers
HOME and GARDEN page

House Temperature Set By Homeowner

Many homeowners make the mistake of establishing one firm temperature setting on the house heating thermostat and then judging the efficiency of the heating system on the basis of their resulting comfort.

Because there are many variables, there is no one "right"

Hot Water Cleans Best

It still takes plenty of hot water with soap or detergent and agitation to get laundry really clean.

When it comes to sheets, towels and everyday cotton, there's nothing like hot water to boost the effectiveness of cleaning compounds. Even the new so-called cold water detergents do a better cleaning job when the wash water is heated.

One thing which makes western softwoods so popular with every weekend camper is the ease with which they can be sawed, planed, chiseled, sanded and finished into beautiful objects.

Setting. Such factors as the clothing you wear, the activity in which you are involved around the house, the humidity, the outside temperature, air motion in the home all have an effect on the temperature that is most desirable.

Depending on the above factors, you may be perfectly comfortable with a temperature of 72 degrees one day, while you may find it too cool at a setting of 78 degrees on another day.

The basis for deciding when a thermostat is correctly set is not the thermometer—but you. The temperature in which you and the other occupants of the home are most comfortable is the only "right" setting.

Because of these climatic changes and varying demands in comfort, the setting should be flexible. Actually the thermostat can be compared to the speedometer on your car. You shouldn't leave the thermostat at one firm setting any more than you would drive your car at only one speed.

Modern thermostats are designed to give precise control of the heat that is delivered to your home.

TIMBER-TOWN INC.
37500 Ford Road
3 Bks. West of Wayne Rd.
721-1616

PANELING SPECIALS
4x7 V-G U-F Mahog. \$2.99
Cash and Carry
V-G Prefinished 4x7 4.29
Pink Mahogany 4x8 4.99

2" x 4" x 8
Clean Bright Stock
Cash and Carry
56¢

PREFINISHED
ANTIQUE BIRCH 4x8x1/4" **\$8.95**
PANELING

ARMSTRONG
SUSPENDED
CEILING
NOW ON DISPLAY
AT LOW PRICES
As Low As 25¢ Sq. Ft.

12x12
ACOUSTIC TILE
Pin Hole 1st Quality S.F. **13 1/2¢**

FIR PLYWOOD
Int. G.I.S. **\$2.99**
4x8x1/4"

K-GUTTER
8 ft. Section **89¢**

COMPARABLE SAVINGS
ON GUTTER FITTINGS

FIBERGLASS
INSULATION
Foil One Side
1 1/2 x 100 SF. **\$3.49**

ALUMINUM
COMBINATION
WINDOWS
\$10.50
Std. Sizes

FOLDING
STAIRWAY
Utilize Your
Storage Area
\$16.95

COMPLETE
NEW CEILING
For 10'x12' Area
\$20.99
INCLUDES:
• White Ceiling Tile • Furring
• Nails • Staples • Molding
FREE USE OF STAPLE GUN
WAINSCOTT
PANELING
48" x 36"
As Low **\$1.99**
As
IF IT'S LUMBER,
Call Our Number
GA 1-1170
You'll Be Glad You Did

Livonia Building Materials Co.
12770 Farmington Rd.
bet. Plymouth and Schoolcraft
Hours 8 Mon. thru Friday
8-12 Saturday

"FOLKS Autumn's an ideal time to plant New Evergreens and your first consideration should be in your choice of variety . . . let us help you pick the right one for the 'right spot'."

JUST ARRIVED . . .
LARGE SHADE TREES
INCLUDING 4" TO 5" MOUNTAIN ASH
• Balled in Earth, Ready for Planting

Also — JUST ARRIVED FOR FALL PLANTING IMPORTED
HOLLAND BULBS
• DAFFODILS • HYACINTH
• TULIPS • CROCUS

EVERGREEN COLLECTION
We feel that the quiet beauty of an evergreen garden is the ultimate triumph. Therefore we have always offered our clients an extremely wide choice of varieties and sizes to select from.

PIERIS JAPONICA
Broadleaf Evergreen, very handsome in form, with lustrous leaves delicately tinted. A nice addition to any landscape plan.

PYRACANTHA
... a remarkable fruiting Evergreen shrub . . . attractive white flowers during the late spring, followed by an abundance of orange-scarlet berries late into the winter.

LANDSCAPING PLANS
... Our competent landscape experts will help you plan, or completely landscape your property . . . Call GA 1-2888 . . . We have everything to beautify your home surroundings.

WAYNE COUNTY'S LARGEST SELECTION OF EVERGREENS and SHADE TREES

HAROLD THOMAS NURSERY
"28 Years in The Landscape Business"

14925 Middlebelt Road, Livonia GA 1-2888
Between 5 Mile and Schoolcraft
OPEN SUNDAYS — No Phone Calls on Sunday PLEASE!