

Including How To Operate A Horse Farm

Schoolcraft Has Courses For All Community Needs

With an enrollment of almost 1,100 day students and approximately 900 evening school students, Schoolcraft College is rapidly fulfilling its primary purpose of making education available to all residents interested in, and capable of, benefiting from such an educational program.

That was the statement of James Dotseth, assistant dean in charge of Technical Instruction, to members of the Plymouth Chamber of Commerce at the monthly businessmen's forum.

"The College has a fulltime faculty of 47 and 47 additional evening instructors," he said. "All but one of the fulltime faculty has Master's degrees and all of our evening faculty have at least a Bachelor's degree."

He pointed out that the four important goals of the institution are:

- 1.—To provide terminal programs for students not going on to four-year college programs.
- 2.—To provide transfer programs for students who do

wish to complete four-year college programs.

- 3.—To provide a technical institute for the community, serving local needs for vocational and semi-professional education.
- 4.—To provide opportunities for interested persons to achieve their vocational and cultural needs through evening classes.
- 5.—To co-operate with other departments at the school system, with civic groups, with educational institutions and organizations outside the

community, with educational foundations, and with private individuals and corporations in any proper endeavor likely to result in educational advancement to this Community College district.

To fulfill these goals the college catalogue provides basic information and the courses to meet these educational objectives.

The transfer curricula notebook contains 93 different programs of study approved by the Baccalaureate degree grant-

ing institutions in Michigan.

The career curricula notebook contains 23 different one and two-year programs leading to Certificates or Associate Degrees for those who complete the two-year career curriculum. The objective here is for employment.

The employment distribution for the college district is: professional and technical, 19.67 per cent; teachers, 3.13; managers and proprietors, 10.84; clerical, 16.96; sales, 11.55; crafts and fore-

man, 20.29; semi-skilled, 16.65; and household services, 1.11.

"Vocational education is not a crash program," Dotseth stated. "It is more specific. It takes as long to educate and train a topnotch tool and die maker as it does a doctor. Naturally, the subject matter is different than the doctor's."

"We have four advisory committees functioning now and plan another in the near future on business education. These committees review the various

educational programs and give me their composite judgements that if Schoolcraft provides such and such a curriculum composed of such and such courses that chances are the graduates will find initial employment and will have the background to advance in the occupational area of their choice."

"To further indicate our service to the community, we are developing a program that I would never have dreamed about. It came from one member of our technical

consulting committee who is a businessman in two areas.

The second business in which he says he can't make a living assists in bringing a sizeable amount of money to the communities of Livonia and Northville, is horse racing.

"He pointed out that there are more horses being raised in Michigan today than in Kentucky. Yet, there are no programs of education regarding horse care and farm management."

"It appears now that we have enough people for a class and we have an instructor. The plans are almost completed. We think this is an unusual service to the community."

Wayne Bench Endorses Judge Burdick for Nov. 3

In an unprecedented move, the Judges of the Wayne Circuit Court formally endorsed a candidate for retention on the bench by recommending the election of Judge Benjamin D. Burdick in November.

Presiding Judge Thomas J. Murphy wrote Judge Burdick as follows: At the regularly monthly meeting held in the City County Building in September, the judges of the Wayne Circuit

Court endorsed your record as a Judge of the Circuit Court and recommend to the people that you be retained in such office.

Judge Burdick was appointed on Sept. 6, 1963 after a 35 year career as a practicing attorney. He has served as Chief Public Administrator for Wayne County for six years; as Special Counsel for the Federal Housing Administration, Detroit; and was elected to the Wayne State University Board of Governors in 1959, a post he resigned to accept the judicial appointment. He was recently elected Governor Emeritus by the University.

Youth Finds Go-Karts Are Dangerous

John Lefevre, 15, of 28040 Stannum, Livonia, knows now that a Go Kart can be dangerous. He was rushed to St. Mary Hospital for examination after he reportedly was thrown off his Kart while driving on Stannum Road, according to Livonia Police reports.

The Bentley High sophomore told officers he hit a bump on the roadway, lost control of the Kart, skidded into the shoulder and was thrown off.



JUDGE BURDICK

The Observer
Wednesday, September 23, 1964 Page Three

The Candidates Speak

Between now and the Nov. 3 election, The Observer will print answers to questions on specific issues from Republican Governor George Romney and Democratic candidate Neil Staebler.

(Candidates Neil Staebler and George Romney tackle the issues of Mental Health Education in this next exclusive Observer feature. Next week: Civil Rights and Senior Citizens.)

Mental Health STAEBLER

I believe mental health problems have been growing faster than we have been dealing with them. Neglect in this area has resulted in climbing expenditures and wasted lives. Up to 70 per cent of the youths affected can be identified early in life and become productive members of the community.

Some indication of Michigan's deficiency in the care of mental ill persons are indicated by the facts that many children cannot even get on the waiting lists for treatment; Michigan has only 20 child guidance centers, despite estimates that 80 are needed; lengthy waits for admission to mental hospitals will continue after facilities presently under construction are completed; Michigan spends less per day for mental patients than most other states.

I will take the following corrective action: (1) The most rapid possible expansion of community mental health centers. (2) Increased appropriations for mental hospitals. (3) An expanded effort to identify emotionally disturbed youth.

The awareness of the future burden of the mentally ill dictates action. Action should be taken when national prosperity is making more money available to the state to meet the problems of the people.

ROMNEY

More progress was made during the past two years toward accelerating help for the mental retarded than in any two year period in recent Michigan history.

Particularly, for the first time the laws have been passed; the planning finished; and the budgets prepared for establishment of a network of 12 Community Day-Care Centers for severely retarded children; establishment of Outpatient Treatment Services at each state institution for the retarded; and construction of new hospital facilities for retarded children needing full-time treatment.

For the first time the Department of Mental Health is getting the necessary staff and facilities to undertake an intensive review of the retarded waiting list. Preliminary findings already indicate that at least half of the retarded children on the waiting list could be served in community programs rather than institutions.

Operation funds have been increased by about \$12 million — more than 13 per cent — in the last 20 months. A total of \$21.6 million has been appropriated for facilities either built or under construction during the same 20 months.

Six community day centers have been established in Port Huron, Muskegon, Grand Rapids, Genesee County, Eatenaw and Macomb County. Active plans are under way to set up centers in the Counties of Saginaw, Oakland, Jackson, Lapeer, Washtenaw and Wayne.

Education STAEBLER

I believe that the funds available from our national prosperity should be used to make important investments in youth — the alternative is huge expenditures in the years ahead to support an increasingly large, dependent population.

The state's share to education for all purposes dropped approximately 10 per cent in the 10 years prior to 1962. This drop has continued during the last two years when national prosperity has given the governor more money than any previous



CASTING ENVOUS EYES In the direction of the double oven electric stove that will go to the winner of the Sears-Edison bake-off next Tuesday at Sears Livonia Mall are 11 of the 12 contestants. (From left) Mrs. Alice Lambert, Mrs. Rose Allen, Mrs. Elaine Lampi, Mrs. Marianna Fortuna, Mrs. Alice Townsend, Mrs. Marge Dennis, Mrs. Evelyn Brooks, Mrs. Betty Glock, Mrs. Naomi Studd and Mrs. Doris Timmerlake with Mrs. Mary Becker standing in front.

Twelve Area Women Vie In Bake-Off Tuesday

Twelve housewives from the Livonia-Redford Township Detroit area and Northwest Detroit will participate in the first annual cake bake-off, sponsored by Sears Livonia Mall and Detroit Edison, next Tuesday, Oct. 13 in the employees cafeteria at Sears Livonia Mall.

More than 10,000 recipe books were handed out to housewives during the bake-off opening, each containing an entry blank for entering the contest.

The rules provided that each entrant present her best cake recipe and indicate whether she would be available for the bake-off in which the winners will receive a double-oven electric stove and other appliances.

From the hundreds of entrants, a screening committee selected the 18 best recipes of which 12 were picked for the competition and the remaining six were named alternates.

The screening panel included 16 judges under the supervision of Miss Marion Ryan, of Detroit. The finalists were selected on the basis of the recipes.

The 12 finalists are: Mrs. Marianna Fortuna, 8929 Mercader, Redford Township; Mrs. Alice Lambert, 20106 St. Francis, Livonia; Mrs. Alice Townsend, 16345 Polyanna Drive, Livonia; Mrs. Evelyn Brooks, 9841 Melrose, Livonia; Mrs. Naomi Studd, 19358 Vaughn, Detroit; Mrs. Donald Becker, 27225 West Seven Mile Road, Detroit; Mrs. Betty Glock, 19704 Parker, Livonia; Mrs. Doris Timmerlake, 18421 Woodworth, Redford Township; Mrs. Rose Allen, 30650 Mason Court, Livonia; Mrs. Elaine Lampi, 19965 Braille, Detroit; Mrs. Margaret Dennis, 29481 Delaware, Redford Township; and Mrs. Shirley Paul, 12931 Montrose, Detroit.

The bake-off is scheduled for 2 p.m. under the direction of Miss Ryan, Elmer Tischer, merchandising manager of all appliances for Sears' Detroit Group, and Arthur Cole, of Detroit Edison, in charge of dealer sales for Western Wayne County.

The 12 contestants will bake in the double ovens in six ovens set up in the cafeteria.

The judging panel will include Miss Ryan, Mrs. Edythe Melrose, WXYZ-TV Lady of Charm; Kay Savage, food editor of the Detroit Free Press; Cyril Riles, food editor of the Detroit News; and Mrs. Myra Cox, Women's Editor of the Observer Newspapers.

The contest will be viewed by who entered, each has been extended an invitation by the sponsoring companies.

During the time when the ovens are baking, members of the judging panel will give short talks to the audience.

Four prizes will be awarded the winners of the bake-off including the electric stove, a blender, a mixer and an automatic can opener.

In addition, prizes will be

Detroit Driver Skids Through Railroad Gate

Matthew Wroblewski, 45, of 19453 McArthur, Detroit, faces a charge of reckless driving after he reportedly skidded through the railroad crossing gates on Middlebelt Road, near the Kroger wholesale depot.

Livonia police reports show that Wroblewski applied his brakes as he neared the tracks but skidded through and across the tracks. Fortunately, the train was still some distance away and he was able to back off.

Detroiter Injured When Car Hits Tree

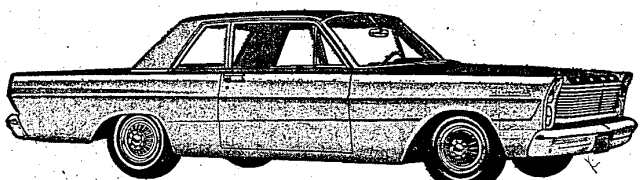
Harry Pukrop, 56, of 7280 Rockdale, Detroit, was seriously injured and taken to St. Mary Hospital in Livonia for examination and treatment after his car ran on the roadway and struck a tree while driving east on Ann Arbor Trail near Stark, according to Livonia Police reports.

Test Drive Total Performance

'65

at

BILL BROWN'S TODAY



1965 CUSTOM 2-DR. SEDAN as low as \$2,361

AT

BILL BROWN FORD, INC.

32222 PLYMOUTH ROAD
LIVONIA, MICHIGAN

GA 1-7000 KE 2-0900

ANOTHER FIRST for Schoolcraft College. Getting adjusted to the rigors of cross country races are these members of the college's first cross country team and the first athletic program sponsored by Schoolcraft. The group includes (from left) Nikola Sihon, of Bentley; Keith Watson, Farmington; Glenn Kios, Farmington; Tom Lepping, Farmington; Malcolm Ramsay, Farmington; Bob Gelst, Livonia; Walt Fieles, Garden City; Dennis Brant, Garden City; and Jerry Koski, Livonia. The team is coached by Tony Rizzo, a member of the Schoolcraft faculty.