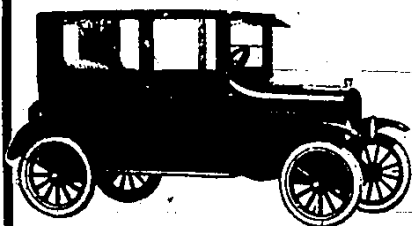


Remember the good old days?

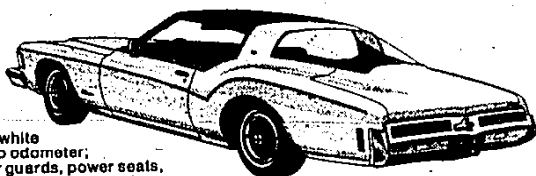


BUICK
TUDOR SEDAN
\$524

Extra wide doors and windows giving clear vision from inside. Collapsible front seat. Ample room for five passengers. Equipped with starter and demountable rims.

They're Back!

RIVIERA
'73



Stock #168. Stereo, white sidewall tires, air, trip odometer, tinted glass, bumper guards, power seats, and window door locks, chrome wheels, body side mouldings, vinyl roof.

\$5524



1973
LeSABRE

\$3524

Stock #197 Harvest Gold LeSabre 2 Door Hard Top, white wall tires, tinted glass, deluxe wheel covers, G.M. safety features, Brown vinyl top.

See the good old guys!

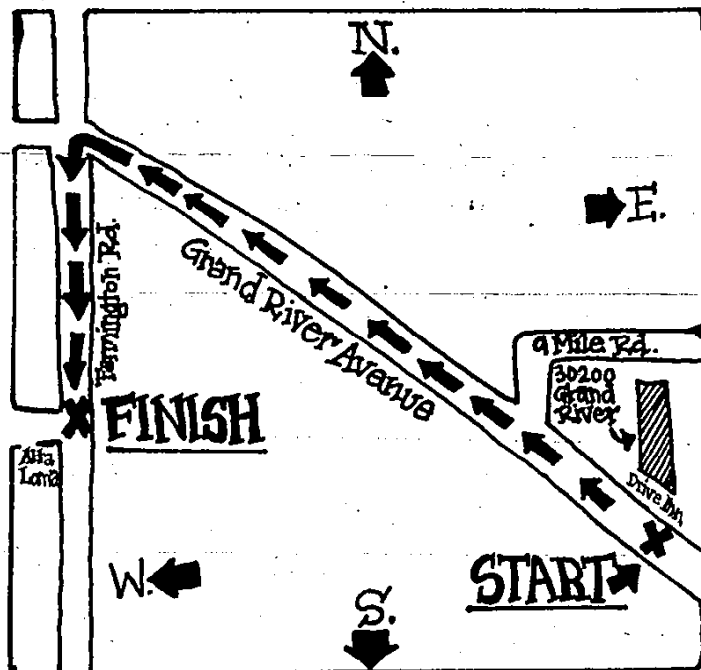


Left to Right • Ron Oberndorf • Bob Kulbacki • Russ Lucier
• Bill Eaton

Ray Conlon Buick

25330 GRAND RIVER AVE.
NEAR SEVEN MILE RD.

KE1-2500



FOUNDERS FESTIVAL PARADE ROUTE—The annual parade is set for 10 a.m. Saturday morning, July 28. Parade units should assemble at the drive-in. The parade will march up Grand River and along a short portion of Farmington Rd. Spectators, get there early, and bring your lawn chairs to sit on along the parade route.

Not enough time to give your lawn the care it needs?

Call
"The Lawn-a-Mat"
Man!

Get a thick, Green lawn.
Costs no more than doing it yourself.
And he does the work.

Only your neighborhood "Lawn-a-Mat" Man gives you: Free lawn analysis. — Lawn-a-Mat premium quality products. Backed by a "no-nonsense" guarantee. — Seeding, fertilizing, weed, insect, & fungus control, aeration and rolling. — Precision application with coast cutting automation. — A tested and proven plan for every lawn. For every budget.



\$24.95
for up to 4,000 Sq. Ft.

GET A COMBINED OFFER
• Seeding (1 lb. per 1,000 Sq. Ft.)
• Fertilization (Turf Master Fertilizer & Micro-nutrients)
• Power Aeration
• Power Rolling

1¢
Sq. Ft. Min. 4,000 Sq. Ft.

SUMMER SPECIAL
• Seeding (1 lb. per 1,000 Sq. Ft.)
• Fertilization (Turf Master Fertilizer & Micro-nutrients)
• Weed Control
• Grub Proofing
• Power Rolling
• Power Aeration

Annual Program includes all the services and controls your lawn needs 4 times a year. Plus 4 check-back spot treatments working. But it's a must! **PROVEN ON OVER A MILLION LAWNS COAST TO COAST**

Lawn-a-mat

Your Neighborhood "LAWN-A-MAT" MAN is backed by AMERICA'S FIRST, LARGEST and MOST EXPERIENCED producer of lawn products applied to the homeowner's lawn.

ACT NOW!

CALL In Southfield 356-8640

All Other Areas 477-4567