

Lodge-Eight Mile Interchange Opens Months Ahead of Schedule

The final portion of a tri-level interchange at the Lodge Freeway and Eight Mile Rd. in Detroit was opened to traffic at noon Thursday, the State Highway Department announced.

State Highway Commissioner John C. Mackie said a \$2.5 million bridge carrying Eight Mile over the Lodge Freeway was opened to traffic nine months ahead of schedule.

Completion of the half-mile-long bridge ends one of the Motor City's worst traffic bottlenecks.

The Lodge-Eight Mile interchange is located at the edge of one of the world's largest shopping centers and one of the nation's biggest developments of private office buildings.

The intersection is one of Michigan's busiest. Nearly 200,000 cars and trucks pass through it daily.

Mackie commended the contractors and employees of the State Highway Department for completing the bridge ahead of schedule.

One of the major factors in its early completion was the use of the Critical Path Method (CPM) of construction.

The CPM method calls for the use of computers to schedule work on complicated projects, thus enabling the contractor to meet a rigid construction timetable.

Mackie said the Eight Mile Rd. bridge is the first highway bridge in the nation to be built with a new corrosion-resistant steel which doesn't need painting.

Main feature of the 6.5 million pounds of steel used in the bridge is that it has a built-in



Painting bridges in urban areas is very costly, Mackie said. In many cases the work must be done on weekends, holidays and nights when traffic is light and premium wages must be paid to workers.

The U.S. Bureau of Public Roads has conducted limited tests of corrosion-resistant structural steel but the Michigan State Highway Department is the first one to use it in the construction of a highway bridge. Buildings in Chicago and Moline, Ill., have been built with the new type steel.

Mackie said the color of the bridge will change from a reddish-brown to a chocolate-brown during the next year.

The bridges on the Lodge Freeway adjacent to the Eight Mile Rd. interchange have been painted progressively darker colors to give motorists a transition from standard aluminum paint to the dark steel used in the interchange.

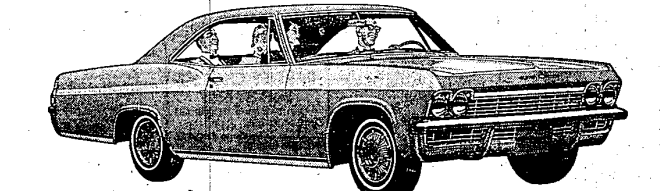
L. A. Davidson, Construction Co. of Lansing was the prime contractor on the tri-level interchange. The Eight Mile Rd. bridge was part of a \$4.1 million contract the Lansing firm had for work in the immediate area.

EXHIBITS of artwork by students in the classes taught by Mrs. Jessie Hudson at Plymouth High School have the attention of Karen Davids and Cynthia Allen. They are shown inspecting some of the items on display in the Dunning-Hough Library as a feature of National Education week.

NOW ROLLING IN...

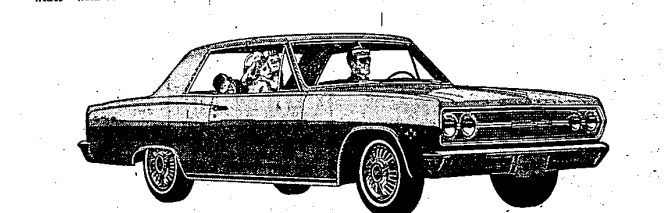
America's most popular cars!

So place your order now for delivery on the beautiful new kind of '65 Chevrolet that's right for you!



'65 Chevrolet Impala Sport Coupe

'65 Chevrolet Impala It's longer, lower, wider—with comforts that'll have many an expensive car wondering why it didn't think of them first. Even Chevrolet's Jet-smooth ride is smoother.



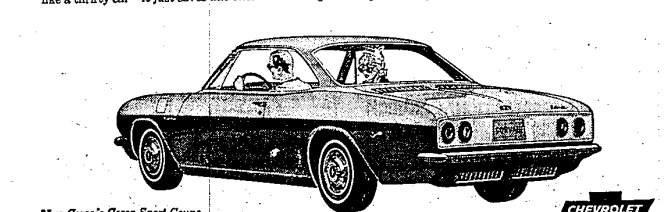
'65 Chevelle Malibu Super Sport Coupe

'65 Chevelle Malibu Brand new last year—It's even newer this year. Smoother, quieter going. With a range of six engines now available, including V8's that come on up to 350 hp strong.



'65 Chevy II Nova 4-Door Sedan

'65 Chevy II Nova It doesn't look or move like a thrifty car—it just saves like one. Widest range of power of any car its size, including V8's available with up to 300 hp. That's right—300.

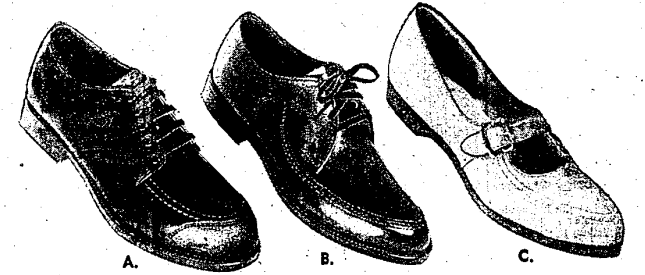


New Corvair Corsa Sport Coupe

'65 Corvair Corsa It's racier, it's roomier—it's a Corvair revolution all over again. Up to 180 hp available in the new Corsas. Also quicker steering, surer stopping and flatter riding.

More to see, more to try in the cars more people buy
Order a new Chevrolet, Chevelle, Chevy II, Corvair or Corvette now at your dealer's

CROWLEY'S LIVONIA MALL BUDGET Stores



Open Friday & Saturday Till 9 p.m.
(Closed Thursday, Thanksgiving Day)

For School, Dress or Play... BOYS', GIRL'S

Storybook SHOES

They're 10 Ways Better Than The Ordinary Children's Shoes... Sturdily Constructed in Every Detail
Sizes 8 1/2 to 12... 12 1/2 to 3
B, C, D, E Widths in Group

Boys' and Girl's will thrill to these new "grown-up" styles... "Storybook" fit, combination last, snug heel, wiggle-toe room for growing feet.

A. Boys' scuff - proof toe bumper oxford. 8 1/2 to 3, B, C, D widths \$5.99
B. Boys' Bootmaker finish oxford, just like big brothers. All-over jet pump in black or red 12 1/2 to 3, C, D, E black or town brown smooth polished leather. 8 1/2 to widths \$5.99
C. Girls' instep strap pump in black or red smooth leather. 8 1/2 to 12, 12 1/2 to 3 \$5.99

Crowley's Budget Store... Livonia Mall Second Level

- 10 Ways Better Because:
1. Injection molded poly-vinyl chloride soles and heels wear longer
 2. Sole and heel all in one piece
 3. Waterproof sole is bonded to upper
 4. No threads in sole to wear out
 5. No nails in heel
 6. Long wearing soles and heels
 7. Non-marking sole and heel
 8. Non-skid, grid - embossed sole
 9. Lighter in weight
 10. More flexible

"POREL" ... New Synthetic Material Created Especially for BOY'S Storybook SHOES



They're Tougher 'n Kids

Only Two Styles Shown... We've Dozens More at This Low Price!

\$5.99

Pair

Parents, here's the answer to all the problems usually found in boys shoes... and they actually outlast child's foot growth span. "POREL", the porous materials that actually breathes, retain original shape.

- No breaking-in. Are light and flexible from the start.
- No rubbers, so waterproof he can slosh in rain and mud.
- No marked floor. Even-wearing heels and soles never mark floors.
- No polishing, wipes to shine with damp cloth.
- Jet black oxford slip-on in B, C, D (oxford up to E) widths, sizes 8 1/2 to 12.

Crowley's Budget Shoes Second Level

INFANTS' and GIRL'S Storybook SHOES

\$4.99 and \$5.99

Excellent wearability, comfort, long-lasting good looks makes "Storybook" shoes perfect for infant's and girls... and reasonably priced at \$4.99 and \$5.99. Only 3 of the many styles shown here.

A. Fluff, taper toe dress one straps. Patent leather. Deep wine burgundy or all-over jet black. B, C, D, sizes 10 to 3 \$5.99
B. Mary Jane shiny black patent for the small fry. Sizes 4 to 8 \$4.99
C. Babies Hi-shoes in butter soft snow white leather. C, D, E widths. Sizes 3 to 8 \$4.99

Crowley's Budget Shoe Dept. Second Level



FREE BALLOONS
COLORING BOOKS
to all children.
No purchase necessary.