

# Looking for a new, used car? Stop at one of these dependable dealers today!

## 57—Automobiles

1960 CHEVROLET 4 door wagon, Black, whitewalls, radio, heater. Call GR 4-0118.

'59 CHEVY Convertible, stick, 348, sharp, \$595. GL 3-5010.

1959 MERCURY 2-door hardtop, automatic, radio, white walls, reasonable. GR 4-0495.

## 57—Automobile

1958 FORD C300 2-door, radio, heater, automatic, good tires and tires, needs valves. \$125. GA 1-7593.

'63 FALCON. Must sell, \$1000. 453-7075.

'57 CHRYSLER 2-door hardtop. Excellent condition. New tires. Needs battery. \$150. Call GL 3-0392 after 4 p.m.

'57 FORD two-door V-8. Excellent mechanical condition. Body and tires good. 56,000 miles. \$175. GA 7-3253.

1958 CHEVY Station Wagon. Original Owner. V-8 Automatic transmission, luggage carrier. Very good condition. 422-5671.

1961 PLYMOUTH Fury Convertible. one owner, like new. GR 4-0184.

CHEVY '54 automatic transmission, radio, heater, runs good, \$125. 425-3842.

## 57—Automobiles

1957 FORD retractable, black, radio, heater, automatic, white walls. GL 3-1034.

1959 FORD 2-door, power steering, automatic, good condition. \$400. 474-5795 after 6 p.m.

1964 Ford Galaxie 500, 2 door hardtop, 8 cylinder automatic, power steering, many extras, excellent condition, 1 yr. warranty. GL 3-2422.

1956 FORD Victoria 2 door, automatic V-8, new car inside and out. Perfect for wife or son's Christmas. GA 1-4578.

1963 FORD Fairlane 500—one owner, many extras, perfect condition, must sell. 274-5000—ask for Dr. Prasad.

1957 CHEVROLET, 4 door, automatic, power steering, radio, heater, very clean. Call 478-4077 after 5 p.m.

1957 CHEVROLET Station Wagon. Automatic, 6 cylinder, good tires, runs good, body needs work. First \$125 or offer. 425-8219 after 5:30 p.m.

1958 RAMBLER Station Wagon, stick, radio, heater, good transportation. Clean. \$150. 425-1875.

1957 FORD V-8, automatic transmission, radio, heater, clean inside and out. Price \$225. GR 4-3439.

## 57—Automobile

1960 CHEVROLET Impala Convertible, tri-power, 4 on the floor, tachometer, padded dash, wife's car, must sell, \$850. GA 7-8612.

1963 THUNDERBIRD, Hard Top, full power, under warranty, excellent condition. \$295. 427-4851.

1956 BUICK, radio, heater, excellent transportation. \$100; grandfather's clock, \$185. 533-4054.

1960 RAMBLER, 4 Door, 16,000 miles, perfect, \$775 or best offer. GA 7-3439.

1957 CHEVROLET, 4 door, automatic, power steering, radio, heater, very clean. Call 478-4077 after 5 p.m.

1957 CHEVROLET Station Wagon. Automatic, 6 cylinder, good tires, runs good, body needs work. First \$125 or offer. 425-8219 after 5:30 p.m.

1958 RAMBLER Station Wagon, stick, radio, heater, good transportation. Clean. \$150. 425-1875.

1957 FORD V-8, automatic transmission, radio, heater, clean inside and out. Price \$225. GR 4-3439.

1964 FLEETSIDE Pickup, heater, washers, heavy duty springs and clutch, with \$59 down, and its only \$59. Allison Chevrolet, 189 Plymouth Road, Plymouth, GL 3-0960.

## 57—Automobiles

1957 CHEVROLET, rebuilt engine and transmission. 2888 Hathaway, GA 1-9108.

CORVAIR, Monza, 1962, radio, heater, white walls, 4 speed manual, 25,000 miles, excellent condition. KE 6-4417.

1962 STUDEBAKER 4 door 6 cyl. Auto trans, R.H.I., W.S.W. Very clean, low mileage. 545-4966 after 5 p.m.

57A—Automobile Parts

FORD 302 or Chev. factory rebuilt motors, \$100; also 312-352-406, and Chev's 301-327-409. You or we install. Guaranteed Terms. 537-1117.

HURST Synecrolog Floor Shift Heavy Duty Tractor Bars—453-7975.

58—Trucks & Trailers

1/2-TON Pick-up to rent weekdays and evenings after 5 p.m. Call KE 4-664.

1958 FORD F-600. Dump truck. \$750. Inquire at 47500 Hartford, Plymouth, Mich.

1964 ECONOLINE Ford. Good condition. 478-5274.

1964 FLEETSIDE Pickup, heater, washers, heavy duty springs and clutch, with \$59 down, and its only \$59. Allison Chevrolet, 189 Plymouth Road, Plymouth, GL 3-0960.

## 58—Trucks & Trailers

FOR SALE — International truck, 2 ton stake, 1948, 30,000 miles, good condition good tires. GL 3-5000, Mr. W. Smith.

1964 CHEVROLET, pick-up. Big box, still under warranty. \$1,395. Garden City Rambler, 33468 Ford Rd. 728-4340.

59—Mobile Homes

1959 COZY Brookwood, 10x45, completely furnished, good condition. \$2,400. Call 453-0457 before 5 p.m. 453-5665 after 5.

1962 MARLETTE Custom, 55x10, 1 1/2 bath, 2 bedrooms, built-in oven and range. 478-7062.

## WE BUY JUNK CARS

HIGHEST \$ \$ PAID



Any Condition • Free Towing •

APPELGREN AUTO PARTS

1323 MAPLE, WAYNE — South of Mich. Ave.

off Hamman Rd. at NYC RR

PHONE: 722-6601

**YOU GOT \$25?**

We got a good used car for you. Easy monthly payments of not more than \$28.00.

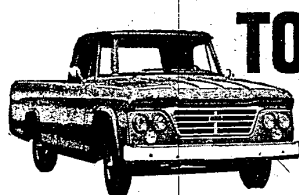
**BILL COCHRANE**

Chrysler - Plymouth - Valiant

27777 Ford Rd. GA 2-8700

## SWING IN AND SWAP

WE'RE MAKING IT REAL EASY FOR YOU TO GET



**TOUGH**  
\$1822

DODGE SWEPTLINE

1965 brings you the toughest truck you can put on the job. Dodge Trucks! Not only tough—they're tops in payload too. Here are the highest sides, widest floor of any pick-up. Here's more cubic feet of cargo space than similar models of other makes. Tough truck! Big loader! And you'll find it hard to beat our deal! Come see us now . . . for a tough-built truck at a price that's right.

**G. E. MILLERS**

NORTHVILLE DODGE

127 HUTTON

FI 9-0660

## THE BEST USED CARS

'64 CHEV. BISCAYNE

Stick, 6-cyl. R. & H. \$1,895

Very clean, like new.

'62 FORD

Fairlane, 2-door, radio, heater, whitewalls

'62 CHRYSLER 300

2-door, hardtop, radio, heater, power steering and brakes

'62 VALIANT WAGON

Automatic, radio, heater

'62 MERCURY METEOR

V-8, automatic, radio, heater

'63 VOLKSWAGEN

Like new

'60 VALIANT

4-dr. sedan, auto, radio, heater, air conditioned

'63 FORD HARDTOP

Galaxie 500, 2-dr. black with all vinyl red trim, R. & H. \$1,895

M. W.W., low mileage

**B. J. RATIGAN**

CHRYSLER-PLYMOUTH, INC.

30777 Plymouth Rd.

425-5800 535-7320

## HAPPY DAYS ARE HERE AGAIN!

## STRIKE'S OVER COME & GET EM!

'56 DODGE

4-Dr. \$145

'59 RAMBLER

Wagon \$299

'59 MERC

2-Dr. H.T. \$299

'59 PONTIAC

4-Dr. \$695

'60 PONTIAC

4-Dr. \$995

'60 MERC.

4-Dr. Wagon \$895

'61 MERC.

4-Dr. \$795

'62 COMET.

S-22 \$895

'62 FORD

XL Conv. \$1695

'62 MERC.

4-Dr. \$1289

'63 FORD

H.T. \$1795

'63 T-BIRD

\$2495

Many More Outstanding Buys in All Makes and Models

## WEST BROS.

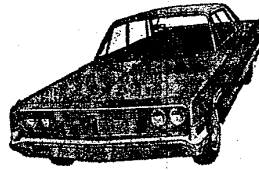
Comet-Mercury-Cadillac

534 FOREST DOWNTOWN PLYMOUTH

GA 5-2444 GL 3-2424

**\$49 PER MONTH**  
WITH \$99 DOWN

'65 CHRYSLER 4-DOOR



**\$79 PER MONTH**  
WITH \$199 DOWN

'65 PLYMOUTH 2-DOOR



**\$59 PER MONTH**  
WITH \$99 DOWN

'64 MODELS  
SAVE UP TO \$1000

## DAMERON

CHRYSLER-PLYMOUTH

29301 GRAND RIVER at MIDDLEBELT  
GR 6-7900 KE 1-8200

## A DETROIT BANK REPOSSESSION SALE TAKE OVER PAYMENT

Choose from Almost 200 Cars Such as These:

WITH NO DOWN PAYMENT

Automobile	Balance Due	Pay Weekly
New Car Warranty, 5,000 Miles, Sta. Wgn.		
1964 CHRYSLER	2633	17.29
Galaxie 500 Convertible		
1962 FORD	1283	11.89
Galaxie "500", V-8, Power		
1963 FORD	1588	14.49
Full Power, Convertible		
1963 CADILLAC	3879	23.14
Grand Prix, Full Power, Air Cond.		
1963 PONTIAC	2377	15.89
Galaxie 2-Dr. H-Top, Full Power		
1961 FORD	987	8.41
Bonneville Convertible		
1963 PONTIAC	2283	21.16
Catline, Dbl. Power		
1962 PONTIAC	1483	13.08
9-Passenger, Dbl. Power		
1962 FORD	1126	10.94
F-85 Cutlass, V-8		
1962 OLDSMOBILE	1384	12.73
New Car Warranty—2-Dr. H-Top		
1964 PONTIAC	2583	16.89
Convertible, Full Power		
1961 CADILLAC	2091	15.84
Double Power, Sharp		
1961 T-BIRD	1739	13.29

Automobile	Balance Due	Pay Weekly
Extra Sharp		
1961 BUICK	987	9.14
Hardtop, Full Power		
1961 OLDSMOBILE	1329	12.39
Full Power		
1960 T-BIRD	1328	12.57
Tudor, Automatic Transmission		
1960 COMET	714	7.03
Full Power, Air Conditioning		
'60 CONTINENTAL	1187	11.03
Double Power, H-Top		
1959 MERCURY	597	5.14
Tudor—Sharp		
1961 DODGE	591	5.87
2-Dr. H-Top, Sharp		
1959 PLYMOUTH	337	3.27
F-500 Convertible, Floor Shift		
1957 FORD	188	1.41
Station Wagon 9-Pass, Power		
1959 PONTIAC	621	5.99
Bonneville Hardtop		
1959 PONTIAC	833	8.44
Automatic, Sharp		
1959 CHEVROLET	488	4.73
Fordor Sta. Wgn., V-8, Auto.		
1957 CHEVROLET	391	3.89

## TELE-GRAND CAR COMPANY

Liquidators

LOCATED CORNER of GRAND RIVER and TELEGRAPH

CREDIT MEN ON DUTY AT ALL TIMES TO O.K. YOUR APPLICATION  
NO APPLICATION TURNED DOWN WILL PAY OFF BALANCE ON PRESENT CAR  
COURTESY CAR WILL PICK YOU UP

23917 Grand River

KEenwood 3-8700

## YOU GET A KING-SIZE DEAL WHEN YOU DEAL WITH LEO

Certainly you can own a better car . . . and at better-than-ever savings. Leo's only too happy to assist you. He's out to make friends and this is your opportunity to get a quality car . . . to get more pleasure out of driving.

1958 PONTAC

Starchief, white, 2-dr. R.H., runs good

1962 FORD

Country Sedan, 8-cyl. auto, R.H.I.

1961 RAMBLER

Just like new

1963 COMET

Conv. low mile

1962 FAIRLANE

500, 2-dr. R.H.I. auto, new white side wall

1964 FORD

Custom, 2-door, Cruiseomatic, red disc, whitewalls, 10,000 actual miles

1963 PONTIAC

LeMans, V-8, real sharp car

1960 MG ROADSTER

Low mileage, very nice looking car, only

1964 GALAXIE

500, 4-dr., demo, power steering, V-8, Cruiseomatic

1964 FORD

Galaxie 500, Cruiseomatic, radio, whitewalls, only

1964 THUNDERBIRDS

2 to choose from, all factory warranty, very low mileage, both loaded with accessories, from



RENT-A-CAR SYSTEM

**FORD**

DOWNTOWN PLYMOUTH

GL 3-1100



RENT-A-CAR SYSTEM

GL 3-1730