

"Developers Are Not Trolls"



veloped becomes too great. "It is used as a muscle to force people to sell out," Doner said.

"They don't have a choice," he added. "I always thought freedom of choice was an integral part of a democracy."

Both federal and state laws requiring environmental impact statements for all governmental development should be extended to apply to the private developer, Doner firmly stated.

Under both the Federal Environmental Protection Act (EPA) and the State Environmental Protection Act (SEPA), governmental development may proceed only after an impact statement, public testimony and alternative proposals have been considered.

"Developers are not trolls," Doner said. "They are trying to make a living, but they need to be checked because their needs and the needs of the community are not always in accord."

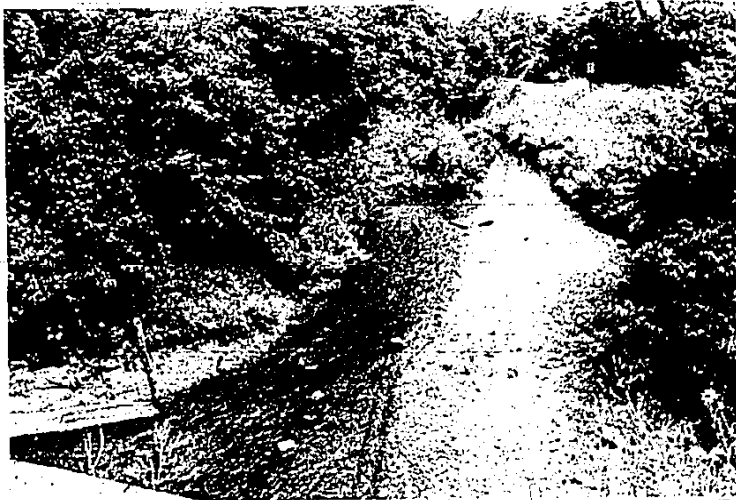
He called for "more city planning, more master plans and more citizen

representation on zoning boards. Zoning is an exercise in city planning. It has to be upheld. Every time a variance is granted, planning suffers a blow.

"ZONING BOARDS should be made up of citizens who hold no extensive real estate interests," Doner declared. "And, they should set up more comprehensive dialogues with the citizens they represent."

In Franklin, the current concern is in warding off a three story office building which is slated for the corner of 14 Mile and Franklin Road across from the Franklin Cider Mill. "The impact of such a building on traffic, river pollution and the flood plains will be tremendous," Doner emphasized, "to say nothing of damaging the esthetics of a well preserved community."

"It's time for all people — developers, legislators and citizens — to come together and create the kind of responsible planning which affords maximum protection of the land."



THESE DENSE WOODS may soon be chopped down for the sake of a three story office building. The site is directly across from the Franklin Cider Mill on 14 Mile and Franklin Road. (Evert photo)

FLOWERS

MEAN MORE THAN A BUSINESS TO US

Flowers are a symbol of a clean environment. Let's keep it that way.

- Selection of dried arrangements
- European silk arrangements
- Reasonably priced Wedding Bouquets

OPEN SUNDAY
NO DELIVERY
CHARGE



Just Call and say
Charge It
Service - Both Friendly
and Efficient
Ask about our Convenient
SPEED-A-GIFT SERVICE
"OPEN EVERY DAY
OF THE YEAR"

LIVONIA FLORIST

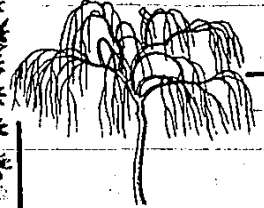
31110 W. 5 MILE, LIVONIA
In the Merri-5 Center

Open Seven Days
Mon.-Sat. 9-8
Sun. & Hol. 10-4

422-1313



THE EARTH'S GOOD TREES



NORWAY MAPLE "Hardy", Good Grower	'24" to '189"
RED MAPLE Outstanding Fall Color	'89" to '189"
MORaine LOCUST "Hardy", Fast Grower	'19" to '129"
PIN OAK Outstanding Fall Color	'89"
MT. ASH White Flower — Brilliant Orange Berries	'24" to '99"

32508 CHERRY HILL,
WESTLAND, MICH. 48185



721-6610

FOREST PLACE MALL

"The Street of Stores"

Bed 'n Stead
"THE LINEN SHOP"
455-7380

Little Angels Shoppe
COMING SOON
Clothing for INFANTS & TODDLERS

Mayflower Beauty
Salon
ALSO FASHIONS FROM
THE SMARTEE SHOPPE
DAY and EVENING APPOINTMENTS
453-8362 • 453-8320
HOURS: MON-FRI. 8 a.m.-9 p.m.
SAT. 8-6 p.m.

Muriel's Doll House
455-8110
Hours: 9:30 to 6:00 p.m.
Fri. til 9 p.m.



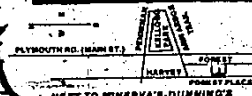
Madame Alexander Dolls
Creative Playthings

Nawrot Pendleton
Shop
MEN'S AND LADIES' SPORTS WEAR
Open Fri. til 9 P.M.

The Pan Handler
455-8080
Hours: 9:30-6:00 p.m.
Fri. til 9:00 p.m.
Gourmet Cookware
Kitchen Accessories

Plymouth Bookworld
455-8787
is pleased to announce Dr. B. DANTO'S new book
"JAIL HOUSE BLUES"
Hours: 10-9 Mon.-Thurs.-Fri.
10-6 Tues.-Wed.-Sat.

Baskets 'n' Bows
Floral Craft Supplies
and Instructions
455-8888
HOURS: DAILY 9:30 - 6:00 p.m.
Fri. til 9:00 p.m.



470 FOREST,
PLYMOUTH