

Here Are Some Flowering Trees to Think About

BY BOB LEE
Of Aldrich's Nursery, Kwanan and Japanese tree lilac with large creamy-white pyramidal flower clusters in mid-June. Cherry-like bark on the trunk and older branches. Single stem plants develop into a small tree suitable for narrow lawn. Leaves large and dark green.

Golden-Rain-Tree, handsome flat-topped small tree. Large clusters of bright yellow flowers in July. Thrives in cities and in many soils withstand drought and heat.

Golden-Chain-Tree, handsome small tree covered with showy pendant racemes of golden peashaped flowers in spring.

Sourwood tree, white flowers in August resembling the Lily-of-the-Valley, leathery foliage. Brilliant Autumn colors.

Weeping-Flowering-Cherry, a true weeping flowering tree with small single or double pink flowers, early blooming, very graceful.

KWANAN Cherry - double pink flowers. Kwanan and yedoensis make up the famous flower clusters in mid-June. Red-Bud or Judas-Tree. Rosey-pink flowers in May, all along the bare stems, large stem plants develop into a heart-shaped leaves. Pink or white dogwood tree. Small tree for sun or shade with red fruit in tiers. Brilliant fall coloring.

Last but not least are the many varieties of the flowering crab which is perhaps the most popular of all the flowering trees.

Idaho Locust, a remarkable tree that will become popular when it is better known in the spring it blossoms out with large clusters of bright pink flowers resembling sweet peas. The tree grows rapidly, is thornless, and has handsome dark green compound leaves. Furthermore it is extremely hardy and drought-resistant.



FARMINGTON GIRL SCOUTS from troops 680 and 439 viewed a demonstration of the "demonstration" on fire hazards that can be found in the home and illustrating the "demonstration" of fire prevention. The Girl Scout Troop leaders are Mrs. John Bowlick, Mrs. Robert Wheeler, Mrs. Albert Francis and Mrs. Frank Such.

Trees for St. Planting

BY BOB LEE
Of Aldrich's Nursery

Norway and Sugar Maples make an excellent tree for street or yard planting. Single stem birch with its attractive white bark, and small leaves.

Green Ash is a dense shaped tree, a quick grower, with a good fall coloring. The thornless honey locust is a strong stately tree with a strong straight trunk. An exceedingly clean tree.

The **Hopa and Eeyi** crabs also make a distinctly attractive street tree.

The sweet gum tree with its star shape leaves and brilliant fall coloring is an excellent tree for this purpose. The **Mt. Ash** makes an excellent street tree especially under the street wires.

Little-leaf Linden, a sense pyramidal form, with compact, glossy foliage. A fine street or home tree. Pin Oak with its excellent fall coloring, symmetrical shape and is a fast grower.

Smokers Warned On Ashray Safety

Spring Clean-Up is a time for cleaning the entire house and checking it for fire hazards, but care of ashtrays is a year round job, says the American Insurance Association.

If there are smokers in your house, you should have plenty of ashtrays, and large ones, too, in every room.

And, ashtrays should be emptied regularly before they become too full.

WHEN EMPTYING ashtrays, the Association reminds, be sure all fire is out.

NEVER SMOKE IN BED!!!

East Jr. High Announces Final Concerts of Year

Although East Junior High is only approaching the end of its second year, its musical groups have attained a high degree of proficiency. In addition to the regular concerts this year, a musical entitled, "Live By Your Heart," was presented at Farmington Junior High School in February. This involved students from the orchestra, band and Concert Choir and was such a tremendous success that Mr. Ross and Miss Davis are already planning another one for next year.

Right on the heels of the musical came the solo and ensemble festival for instrumentalists. East had 32 events entered and 29 received superior or excellent ratings.

THE MONTH of April was a busy one as all of the choirs and the Concert Band participated in district music festivals. The Concert Band, Concert Choir and Girls' Choir received superior ratings with the first two groups going on to the state festivals. Once again East Junior High was proud to have received excellent ratings for both groups.

At the present time both directors are "frantically" preparing finals programs for the year. The annual vocal concert will have as its theme, "Meet Me At the New York World's Fair," and will feature many soloists and instrumentalists in addition to the choirs. The event is scheduled for Friday, May 12, at 8 p.m.

THE FOLLOWING Wednesday, May 12, at 8 p.m., the Cadet and Concert bands will present their spring concert under the direction of Mr. Ross. Featured on the program will be a novelty number, "The Peck-Horn's Revenge," with the French horn section as soloists. Doug Lam will narrate the program.

Work Saving Tips Can Help Clean House

Work saving rules can make any job easier — even house cleaning.

Understanding the nature of the job is essential to help you organize your time and decide who should assume responsibility for the job, according to Michigan State University Cooperative Extension Home Economists.

Once you have established basic work plans, there are several ways you can lighten the work load:

Prevent dirt from collecting by frequent light cleaning, use of special fabrics and other dirt-saving devices.

Provide convenient storage. Take one job at a time.

SUIT YOUR EFFORTS to your needs — not "what the neighbors think."

The Home Economists also point out several guides for cleaning:

Make the best use of your body.

Use the best tool for the job. Get the dirt and food from your vacuum sweeper.



Be Careful When Using Aerosol Cans

During spring clean-up activities, be careful how you use aerosol cans, says Mary A. Hardy, Oakland County Extension agent, home economics. Spray paints, lacquers, insecticides and other toxic aerosol products should be used only where there is good ventilation.

Any products containing carbon tetrachloride are especially dangerous to health if inhaled. Alcohol intensifies the poisoning effects, and should not be consumed within 24 hours before or after using carbon tetrachloride. If you feel dizzy, drowsy, or nauseated while using spray products, stop work immediately.

BEFORE DISCARDING the can, depress the valve until all pressure is released. Never throw empty aerosol cans in the fire, since the gas contained in the can may cause an explosion.

Recently a neighbor had a fire which totally destroyed her kitchen. Two aerosol cans which were in the cupboard exploded in the fire and were firmly embedded in the kitchen wall. Remember that intense heat from the stove, radiator, or even from the sun can cause the cans to explode.

Lawn tip of the week

Now's the perfect time to knock out dandelion, plantain, buckhorn and similar lawn weeds. One simple application of bonus does the job. Scott's double-action bonus fertilizes your lawn too. Makes grass grow greener. Helps it spread out to fill in where the weeds were. Result? A greener, thicker, more weed-free lawn.



BONUS to treat 5000 sq ft 5.95

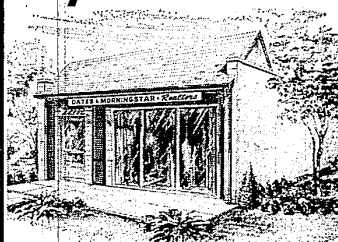
DAN LOWE HARDWARE

33405 GRAND RIVER 474-1022

WE DELIVER

"Big enough to serve you—Small enough to know you."

Buy • Sell • Trade



RESIDENTIAL & COMMERCIAL PROPERTIES
ACREAGE

You can Depend on D & M

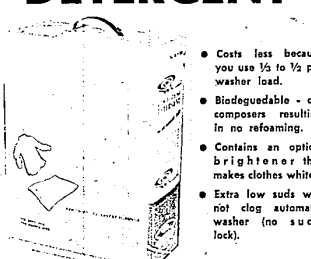
Member U.N.R.A. Multi-List Service

DATES & MORNINGSTAR

Realtors GR 6-4810

22722 Orchard Lake Rd.

INTRODUCING whirlpool LOW SUDS DETERGENT



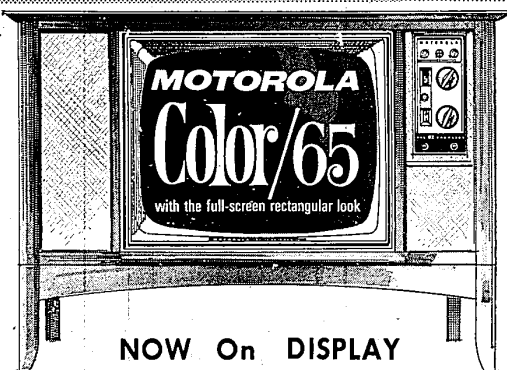
- Costs less because you use 1/3 to 1/2 per washer load.
- Biodegradable - decomposes resulting in no refoaming.
- Contains an optical brightener that makes clothes whiter.
- Extra low suds will not clog automatic washer (no suds lock).

ORDER TODAY

25 lb. box 6²⁹
DELIVERED TO YOUR HOME

Farmington Venting Co.

624-4635 or 626-9186



NOW On DISPLAY

MOTOROLA'S NEW RECTANGULAR TUBE

Now, you can enjoy color programs on a rectangular-shaped picture screen that's full, big, with a natural shape similar to color movies. Corners of the picture aren't completely cut off as they are on round-tube color sets.

NEW SLIM CABINETS

Motorola's new rectangular tube is about 5.2 inches more compact than round color tubes so cabinets can be trim and slim. They fit closer to the wall than ever before possible with large screen Color TV sets. You can choose from many fine cabinet designs... including decorator sets designed by Drexel exclusively for Motorola.

PROVED DEPENDABILITY

Motorola Color/65 TV sets have a hand-wired chassis precision crafted with hand and dip soldering for circuit connections of high reliability. They feature a Solid State UHF Color Tuner, a Color Indicator Light, an Automatic "Color Killer" system, Motorola-patented Automatic Color Synchronizer circuit and Two-

Stage Video Amplifier, a Motorola Color Demodulator System (3 patents) and a Motorola-engineered Convergence Circuit (5 patents). And they're guaranteed by Motorola's full year guarantee that covers free exchange or repair of any tube or part proven defective in normal use. Arranged through us. Labor extra.

Come in and let us demonstrate the many extra-performance features of Motorola Color/65

RICHARD'S TV

22434 Orchard Lake Rd. GR4-9123

GRAND OPENING

of FARMINGTON'S COMPLETE PET SHOP

Open Monday, Thursday, Friday Til 9 P.M.



DOG FOOD SAMPLES and BOOKLETS

Hand Tame Baby

MYNAH BIRDS

The Best Talking Bird in The World

Also A Selection Of

CANARIES • PARAKEETS • RARE FINCHES

39⁰⁰

YES, WE HAVE PUPPIES and KITTENS

COMPLETE LINE OF

Quality Pet Supplies
Frozen Horse Meat



Grooming Service

For

ALL BREEDS OF DOGS



All Pets Handled Under the Supervision of a Licensed Veterinarian

PETS 'N' PARTICULARS

22820 MOONEY

Opposite Farmington Shopping Plaza

474-6806