

Insurance and other extras) will be \$960. A 10 percent increase through error of falsification in the weight of this 8,000 pound shipment COULD COST AN ADDITIONAL \$96.

pounds. Other means might also be used to bump up the weight, such as placing concrete blocks or a horse in the van during the weighing process. (Don't laugh! This has hap-

One method of illegally increasing load weight involves weighing persons other than the driver on board the vehicle. If, for example, four persons are on board in addition to the driver, the weight of your shipment would have been unlawfully increased or "bumped" 600 to 800

For additional information on moving, including the "Householders' Guide to Accurate Weights," and an advisory on "Lost or Damaged Household Goods" write to: Attorney General Frank J. Kelley, Law Building, Lansing, MI 48913.

MAKE YOUR MOVE

To Gracious Country Living . . .

Close to Westland shopping, Churches, Schools

ONE BEDROOM

\$175

TWO BEDROOMS

\$194

Rentals Include

DRAPES
CARPETING
CENTRAL HEAT
SWIMMING POOL

AIR CONDITIONING
COMMUNITY BUILDING
SAUNA & TENNIS COURTS
ALL UTILITIES
Except electricity

TOTALLY SOUND PROOF and FIRE PROOF

Furnished Models Open Daily

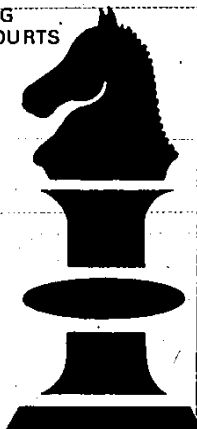


Village
SQUIRE
APARTMENTS

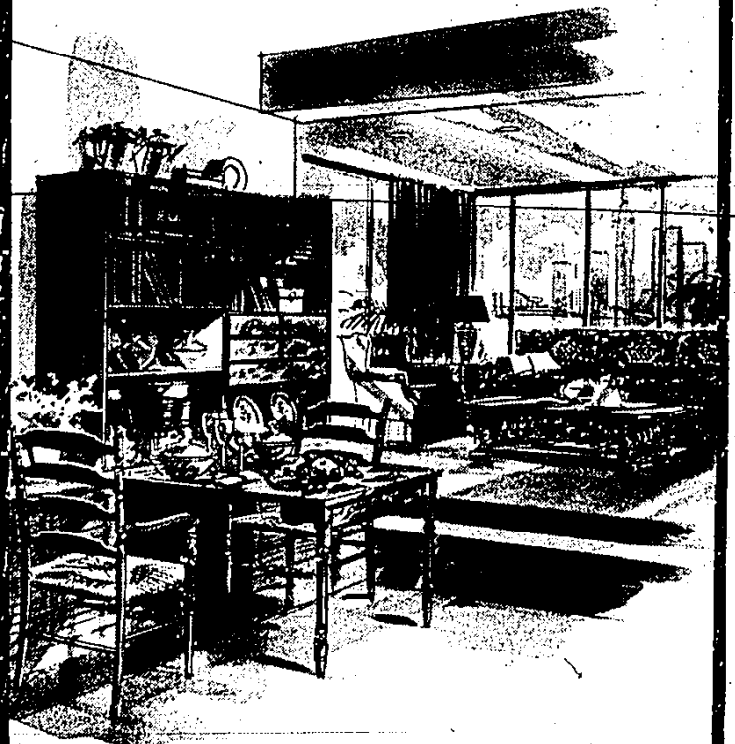
FORD ROAD between Newburgh
and Haggerty

453-8773

358-5550



save up to 20%
during our
Ethan Allen
HOME
FASHION
SALE!



Living rooms, dining rooms, bedrooms, dens, and children's rooms ... plus lamps, accessories, floor coverings and bedding! Ethan Allen brings you outstanding quality and craftsmanship in fine traditional furniture that adapts beautifully to any floor plan and decor ... from country colonial to compact condominium! So come in for great decorating ideas, great savings, and, of course, the same great personal service you find all year round!

CONVENIENT TERMS, OF COURSE

OPEN MONDAY THRU FRIDAY TIL 9 • SATURDAY TIL 5:30

the *Hearthside*
Michigan's Largest Ethan Allen Dealer

LIVONIA
15700 MIDDLEBELT
Just North of Five Mile Road
PHONE 422-8770

UTICA
50170 VAN DYKE
Between 22 and 23 Mile Roads
PHONE 739-6100