

"There is no grievance that the devil loves nothing better than the subject of redress by mob than the intolerance of the law." — Abraham Lincoln. —James Russell Lowell (1838).

"Where Insurance is a Business"

KENN LOOMIS INSURANCE

"Insurance For Every Need"

Personal Insurance Service to Policyholders Since 1925

CALL
KENN LOOMIS or "CEC" ROBERTS

23284 Farmington Road
Farmington, Michigan
NANCY E. HEYN

GR. 4-1690
Nights GR. 4-5940
GR. 4-3978

CIVIC Theatre

★ FARMINGTON ★

TONIGHT & FRI. — Frank Sinatra, Burl Ives, "FROM HERE TO ETERNITY"
Shown 8:14 Only

Shown 6:10-10:10

BIG STAGE & SCREEN SHOW FRI. MIDNITE

THE INVISIBLE CREATURE

BRIGITTE BARDOT

On the Screen, "CURSE OF FRANKENSTEIN", Color

SAT., Martin & Lewis in "JUMPING JACKS" & Gene Kelly, Barbara Lang, "HAPPY ROAD"

SUN., MON., TUES., "HOME BEFORE DARK" & PHAROAH'S CURSE"

Beginning Saturday

March 28

our

Farmington Office

will be open Saturdays

9:00 a.m. - 12:30

DETROIT EDISON

Area Curriculum Survey to Be Completed Soon

At a recent meeting the Sub-committee on Curriculum of the Citizens Advisory Committee of the Farmington School District heard a progress report from George Farrah concerning his interviews with parents and teachers regarding curriculum in the Farmington Public School System.

It was learned that his interview schedule is approximately half completed. Adverse weather conditions have hampered his efforts.

Farrah stated, however, he had obtained enough findings to indicate definite trends of thinking regarding the high school curriculum. For example, both parents and teachers asked questions pertaining to the areas of curriculum development and guidance.

Farrah told the sub-committee of the "fine, community spirit and the splendid co-operation" that he experienced during the course of his interviews. The idea of this kind of survey was enthusiastically received by those interviewed, he said.

The study has been designed to obtain, in a scientific manner, information on some of the desires of the community concerning subjects to be taught; the manner in which these courses should be presented; and to whom they should be offered.

During the next two weeks the remaining parents on the interview schedule will be contacted. It is the sincere hope of the sub-committee that parents approached by Farrah will help him in every way possible to complete his study quickly and efficiently; an official spokesman for the sub-committee stated.

Will Force Winter Garbage Cleanup

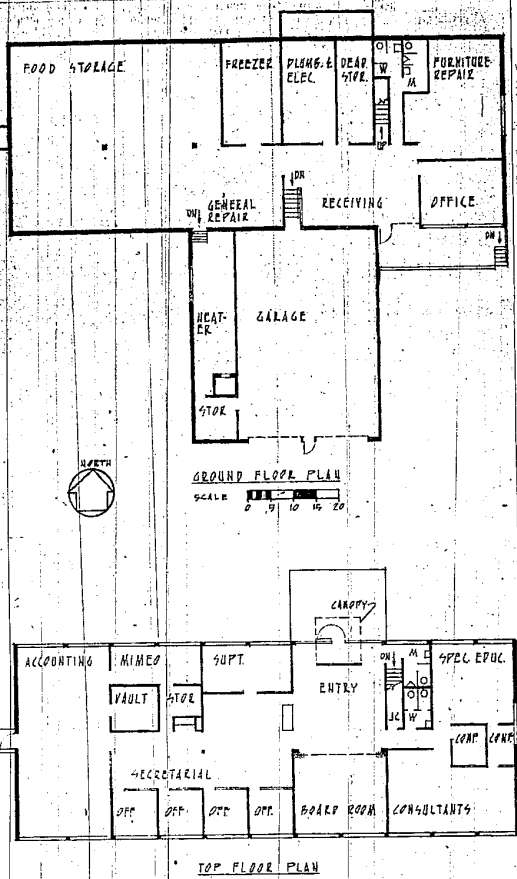
Immediate cleanup of winter garbage collections in the township was asked Tuesday by the township board. Some places throw out garbage all winter, then must be forced to clean up.

Private garbage collectors are asked to leave their address and phone numbers with the township clerk, as people often inquire who does this.

Walking into the street from between parked cars is in effect a sure way to commit suicide. The thinking pedestrian who desires to live to a ripe old age will avoid this practice.

GRAHAM FOR FARMINGTON CITY COUNCIL

—Paid Political Advertisement—



FLOOR PLANS for a new Farmington School District service and administration building, to be under construction soon show the location of the various facilities which will be incorporated in the building.

The lower floor will contain the service portion of the building including storage areas, repair sections, a receiving section, office and bus garage. The administration portion of the building on the second floor will include a School Board room, consultants offices and an accounting department area as well as individual administrative offices.

40% State Population Growth Predicted in Next 20 Years

"Michigan can expect a minimum population growth of 40 percent in the next 20 years with the majority of the increase developing south of a line from Bay City to Ludington, Dr. Frank W. Suggitt stated in a report to the Michigan Good Roads Federation.

Suggitt, head of the Department of Resource Development of Michigan State University, said the majority of this growth will likely develop in the 18 counties which now make up the "large urban area." The counties, he said, include Wayne, Oakland, Genesee, Saginaw, Bay, Macomb, St. Clair, Monroe, Lenawee, Washtenaw, Jackson, Ingham, Calhoun, Kalamazoo, Kent, Ottawa, Muskegon and Berrien. Counties in close proximity, such as Livingston, Eaton and Shiawassee will share in the growth, he said.

"These counties are developing into industrial corridors and fortunately for the present and the future the Five-Year Expressway Construction Program is designed to directly serve these areas and indirectly service their recreational needs," Suggitt said.

Suggitt reported that Michigan's population is increasing more rapidly than any of its neighboring states and much more rapidly than the population of the United States as a whole. Only one other state, California, has experienced a greater rate of gain (percentage increase) he said, and also a greater number of new people than Michigan since 1950.

Suggitt said, "Continued rapid growth predictions are based upon Michigan's proximity to the largest consumer market on the continent.

"Furthermore, Michigan's proximity to the natural resources upon which heavy industry is based adds to the bright prospect of growth. The iron ore and limestone of the Northern Lake States area are linked with the coal fields to the south and east by the Great Lakes and St. Lawrence Seaway, which further tend to concentrate industrial concentrations in the area.

"The abundant availability of fresh water for industrial processing, for human consumption, for waste removal, and for irrigation and recreation further assure Michigan's rapid growth. No other state is better situated with regard to water. This can well become the critical factor limiting industrial and population growth in many other states.

"The availability of accessible recreational features will be an important aspect of the state's industrial and recreational growth. The conveniently located forest, fish, game, beach and scenic resources of both southern and northern Michigan assure continued expansion of recreational travel and tourist and resort development."

Editor Herb H. Love, The Lincoln County, Idaho, Journal—Letting the state assume half the cost of maintenance and operation is tantamount to a loss of local determination in our schools. The Journal falls to see any advantage in loss of local control of any institution. And the peculiar part of such a situation would be higher administration costs with resulting higher taxes.

CLUB

FARMINGTON CITY COUNCIL

WATCH FOR TURNING CARS

KIWANISANS were kept in laughter during most of the program at their regular meeting Tuesday night with the conversation of these four girls in their presentation of a nonsensical debate. Studying speech at the Lancaster School of Expression, all four girls are students at Farmington Junior High. They are, left to right, Marie Harding, Sharon Woodard, Pam Campbell and Mary Sue MacIvaine.

Obituary

Hazel M. Treend

Mrs. Hazel M. Treend, a well-known Detroit art teacher who also taught several Farmington residents passed away at her home, 12263 Archdale, March 8, after a series of prolonged illnesses.

She was born October 3, 1896, in Newark, Illinois. After graduating from Yorkville High School, she studied music and art from various instructors.

Hazel was married to Edward I. Treend in 1923 at which time they moved to Chicago for a short time.

In 1928 the Treends returned to Detroit to make it their home after which Mr. Treend obtained a position at Detroit Edison. Mrs. Treend, in addition to raising two children, fulfilled a long-time desire to teach oil painting by conducting (as many as) three classes daily for five days a week in her home. Men and women from all walks of life, representing nearly every type of business attended, among them several from Farmington.

Over the period of years many invitational exhibits were held at various churches, usually depicting some country, state or international subject, the latest being an art exhibit of over 300 paintings with the main theme being the state of Michigan.

Mrs. Treend is survived by her husband, Edward, a daughter, Mrs. Portia Thede and a son, Edward Earle.

Funeral services were held at the Strathmore Methodist Church, 16801 Schoolcraft, at 2:40 p.m. March 11. Burial was in Grand Lawn Cemetery.

Register 100 Voters For Twp. Monday

One hundred voters were registered Monday, the final day, by Twp. Clerk Floyd A. Cairns. The office was open to 8 p.m.

While voter registration was good in the township since the primary election, it was not as heavy as before the Feb. 16 vote.

Civille Civic Assn. Annual Meet Mar. 19

The Clarenceville Civic Improvement Association will hold its annual meeting at the Farmington Township Fire Hall on Wheeler St. Thursday, March 19, at 8 p.m. sharp.

An election of new officers will be held.

Refreshments will be served following the business meeting.

Most middle-aged men enjoy dancing, if they can sit fairly close to the stage.

Special Meeting

A special joint meeting of the Farmington Township Board and Farmington School Board has been set for Friday night at 8 p.m. Members of the two governing bodies will meet privately to discuss mutual budget and tax problems.

Shop in Friendly Farmington

CONROY'S MARKET & FOOD LOCKERS

23534 FARMINGTON RD. GR. 4-3535

PROTECT YOUR DIAMOND'S BEAUTY

Orange Blossom Rings

Von Burg's

Oldest Established Diamond Merchant and Jeweler in Redford

Established 1929

22019 Grand River

Repairs by Expert Swiss Watch Makers and Jewelers

BILL ROOT CHEVROLET

GR. 4-0500 32715 GRAND RIVER KE. 5-3536

GET THE DEAL YOU ALWAYS HEAR ABOUT BUT CAN'T GET ANYPLACE ELSE!

LET US MATCH ANY DEAL YOU GET IN THE METROPOLITAN DETROIT AREA!

BRENNER'S FARMINGTON HILLS MARKET

24233 Orchard Lake, Corner 10 Mile

WITH THIS AD

HEINZ BABY FOODS	STRAINED — 10 oz. Jar 1 FREE	11 for \$1
TUNA	White Meat, Solid Pack or Mince Size	2 cans, 49c
COTTAGE CHEESE	FULL F&B. PACKAGE	15c
MILK	1/2 GALLON BOTTLE	33c
APPLES	Eating or Cooking	3 lbs. 10c
SUGAR	Pure Granulated	5-lb. bag 39c
GRAPEFRUIT	Seedless	3 for 10c

MEAT PRICES PREPARED FOR YOUR DEEP FREEZE

FLORIDA ORANGES 3 doz. \$1

VEGETABLE SOUP Campbell's 12c can

NO. 1 POTATOES 3c lb. 10 lbs. 29c

FAYGO SPARKLING WATER 5c Full Qt. Bottle

PET - CARNATION MILK 5 tall cans 59c

AWREY BAKED GOODS

COOKIE SPECIAL GET 1 DOZEN AT 1/2 Price

When You Buy 1 Dozen at Regular Price

AWREY BAKERY DEPT.

FRESH FISH WEEK-ENDS

STEWING CHICKEN 35c lb.

SLICED BACON 49c lb.

Hytred

PHONES GR. 4-9808 KE. 7-4275

OPEN DAILY 9-9 — SUN. 10-8

FRI. & SAT. TO 10 P.M.

AMPLE FREE PARKING

DELIVERY SERVICE