

USED CARS

1961 CHEVROLET, 4 door, radio, heater, auto transmission. Excellent condition. MA 8-1808. 42-10

1956 BEL-AIRE Chevrolet, A-1 shape inside and out. 23650 Haynes, south of 10 Mile Rd. 43-10 GR 4-3139.

1956 FORD Fairlane, looks and drives very good. All extras. GR 4-3139.

DODGE, '57, V-8 auto., black hardtop, 3 way power, 42-10 GR 6-0115.

1960 FORD, 2 door gray. Good condition. MA 6-5448. 46-10

1 Year or 12,000 Mile Warranty

1958 DODGE, Custom Royal, 3, 4, 5 door, hardtop, black with black and white upholstery and white tires. Radio, heater, automatic transmission, power steering. Priced for quick sale. Drive it away for \$99 down and financial balance for \$38.33 per month.

TOWN & COUNTRY DODGE

GRAND RIVER at POWER GR. 4-6750

DANNY DENTON SAYS

I'M ON MY WAY TO GET A

"DENTON DEAL"

1958 BUICK Super, 4 Door, Hardtop, Power	\$745
1959 BUICK LeSabre, 4 Door, Sedan, Power	\$995
1959 BUICK Invicta, 4 Door, Sedan, Power	\$1095
1959 BUICK Electra, Convertible, Full Power	\$1395
1961 BUICK Special, 4 Door, Station Wagon, Automatic	\$1395
1961 BUICK LeSabre, 2 Door, Hardtop, Power	\$1995

1962 OLDSMOBILE Starfire Convertible, Full Power, Maroon. LIKE NEW. \$3095

DENTON BUICK CO.

Across From 7-Grand Shopping Center
25400 GRAND RIVER KE. 1-8881

High On A Hill!

3 Bedrooms with possible 4th or study on Lower Level. Modern Kitchen with eating space. At least a Living Room (23'x15') spacious enough for massive furniture plus a window wall that will bring the beauty of the outdoors right to your chairside the year around. Carpeting and drapes throughout, all purpose Recreation Room on Lower Level that's ideal for family get togethers or teenage parties. Screened porch 23'x8' lets the breeze in and keeps the insects out.

Greenhouse 14'x11' heated and thermally controlled for the "Green Thumbers." Beautifully landscaped 160'x180' hilltop lot with trees gives youngsters a play park of their own. Located in a park like neighborhood, close to schools, churches, and Public Schools. Quick possession available. (Write or call for your free map of the Farmington Area.)

\$29,900.00

WESTGATE

31632 GRAND RIVER
KE. 4-6100 GR. 4-4990
Member of Multi-List Service

The Women of Kendallwood Farms

By JOAN HARRIS

Some people are never really on vacation. For example, men in business for themselves, oilmen, electricians, store owners, mothers, and of course the 1963-64 checked officers of The Women of Kendallwood Farms; Lillian A. Denslow, President; Elaine A. Denslow, Vice President; Wanda A. Denslow, Recording Secretary; Ruth Thomas, Corresponding Secretary; and Mickey Williams, Treasurer. Sure, they take a week off for a trip to the cottage or for visiting friends and relatives. Still, in the back of their minds, they are conjuring up ideas for their club.

Their first job was to appoint the other members of the executive board. This energetic and ambitious group of officers had many ideas for change and expansion for the coming year. So, in choosing these board members, they carefully considered the part each individual would play in their master plan for the year.

NOW LET'S MEET our new board members. Rita Wayne, Membership Chairman, has a busy summer ahead of her. She's bustling about planning neighborhood coffee's through out "K" 2, 3, and 4. These informal get together's will acquaint new girls with the purposes and objectives of the club and for those who aren't so new, you'll want to hear about our intriguing program plans.

Anyone is welcome, so please call Rita Wayne at GR 6-1558 if you would want to join us. When you become a member of the Women of Kendallwood Farms, you can be sure of a warm reception from our Hospitality Chairman, Mary Trebble. Her artistic talents will be put to use in planning the refreshments and table settings for the evening. In her usual efficient way, Mary has formulated her basic plan of action. She'll be on the lookout for new recruits each month, so if you want to get in on the ground floor and make new acquaintances, see Mary. Being remembered with a card on the proper occasion is a personal touch we are proud of. If she is notified, Joan Lennis, Remembrance Chairman, will drop a line to your friend in need. Incidentally, this includes any resident in the area.

KEEPING OUR meetings on the right track, that's the job of Shirley Kinsey, Parliamentarian. Her big undertaking for the year is to update our by-laws. Progress calls for a change. Most past presidents can sit back on their laurels. We choose not to give Gale Grolman a card on the proper occasion that chance. As Nominating Chairman, the club is still depending on her, this time for it's future. Publicity Chairman, by now you've guessed who that is, so help me with the job by watching for the column and for news briefs of coming events.

At present, we have lined up three major projects for the year. Not to mention others that are in the formative stages. Bea Schumacker is already devising the plans for a Telephone Bridge early in the fall. The profits from this evening will go toward financing the

Michigan Youth Chorale To Climax European Tour

Enthusiastic reports are being received from the Michigan Youth Chorale as it completes its European tour in Finland. Arriving on July 14, the group spent a week in Helsinki. Concerts were given at the Lintanmaki Amusement Park, to the 1,000 employees at the Oy Pohjoismainen Yhtyspankki (Bank) and the great Cathedral. The Chorale also sang for the President of Finland, by special invitation, and gave a television appearance in Teoston. While visiting the grave of Marshal Mannerheim, former President of Finland and outstanding national hero, the group placed two wreathes on the grave and sang Finlandia in Finnish and the American National Anthem.

TOURING WITH the Michigan Youth Chorale from Farmington are Farmington Senior High School graduates Marcella Neal of 30443 Rockshire Drive and Susan Sealey of 2676 Farmington Road.

Miss Neal is the daughter of Mr. and Mrs. Herbert Neal and Miss Sealey is the daughter of Mr. and Mrs. Richard S. Sealey. Between July 22 and July 30, the Chorale toured southern Finland by bus, singing in

Nature Center Attracts Many

Youngsters and parents are finding a wide variety of interesting and educational items on display at the Nature Center of Lower Huron Metropolitan Park near Belleville.

One of the most provocative is a beehive enclosed in glass, where visitors may watch bees make honey. Attached to the ceiling of the geodesic dome building, this beehive has a plastic tube which permits bees to enter or exit from the Nature Center.

THE AIM OF the Nature Center is to make city folks become more familiar with the natural history of southeastern Michigan. To help attain this goal, the following exhibits are now on display—four wall aquariums featuring fish, turtles, frogs, toads and snakes; a display showing tree leaves and another showing the growth of a tree; four different matching games; stuffed animals which persons may pick up to get the feeling of their paws; a slide show showing local animal life; an insect display featuring moths, butterflies and dragonflies; a mounted Black Duck exhibit with nest, young and eggs; twelve mounted birds; molds of parrots of various sizes; a display of various bird nests

LEGAL NOTICE

ADVERTISEMENT FOR BIDS
FARMINGTON PUBLIC SCHOOL DISTRICT
OAKLAND COUNTY, MICHIGAN

The Board of Education of the Farmington Public School District will receive bids for movable partitions at the O. E. Dunckel Jr. High School and North Farmington High School, at the Administration Building, 32509 Shawansee, Farmington, Michigan until 4:00 P.M. Monday, August 12, 1963. At that time bids will be opened and a read aloud.

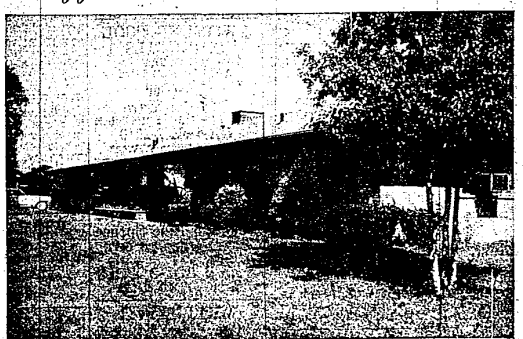
Detailed specifications may be obtained from J. M. Read, Assistant Superintendent at the Board of Education office, GR. 4-1050.

All proposals should be firm for a period of thirty (30) days after the reading of the bids.

The Board of Education reserves the right to reject any or all bids, and to waive any informalities herein.

BOARD OF EDUCATION
Farmington Public School District
Farmington, Michigan
BARBARA ANN BROWN, Secretary

Rangy Ranch on a Manicured Acre



Crimson sunsets etch the horizon and playful breezies romp across the lawn of this luxury home in an acre of Texas-size lots.

This is a custom home with special features throughout — 15 x 25 Living Room and 15 x 18 Family Room each with fireplace, 4 large Bedrooms, 3 deluxe baths and streamlined built-in kitchen. A cool 15 x 38 covered porch off the Family Room with a grill is ideal for summer entertaining.

There is much more invested than the asking price of \$38,750

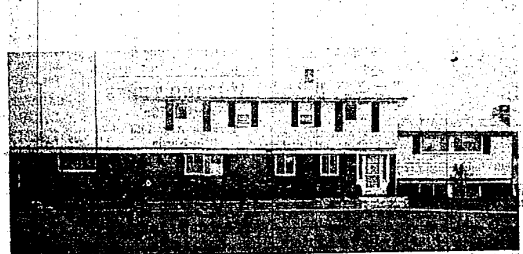
We Have Many Other Fine Homes at A Variety of Sizes and Prices

OMAR G. SANDERSON

REAL ESTATE SERVICE

CHECK OUR MULTI-LIST SERVICE

32300 Grand River Ave. GR. 4-3000



For The Large Family

3400 square feet of living space in this 5 bedroom custom built home, built in 1960, in Farmington's most exclusive area. — It features a 23' x 17' living room with balcony overlooking an 11' x 15 1/2' dining room, two natural fireplaces; living room and family room, built-in kitchen including dishwasher which adjoins a 10' x 14' breakfast room. All five bedrooms and two full baths are on the upper level, there is a half bath on the main level. There is also a workshop for Dad, and a large two-car attached garage. This spacious home has a beautiful setting on .134 acre lot — The owner has been transferred — Immediate possession.

\$44,900.00

GRINGLE REALTY

32500 Grand River Ave.
Phone GR. 4-7500