

The Farmington Enterprise

Official Publication for Farmington City and Township

THIS SECTION MAILED TO MORE THAN 12,000 HOMES WEEKLY

SEVENTY-SIXTH YEAR—No. 51

FARMINGTON, MICHIGAN, THURSDAY, SEPTEMBER 10, 1964

SECTION C

The Farmington Enterprise COMMUNITY CALENDAR

This calendar is being sponsored as a public service at NO CHARGE by The Farmington Enterprise in cooperation with the JAYCEE AUXILIARY. All copy should be called to the Calendar Coordinator, Sherry Laanma, GR 6-375, or Doris Baker, GR 4-5410, no later than Thursday previous to the week of publication.

SEPTEMBER 11

Fish Fry, St. Francis K of C Hall, 21900 Middlebelt. Open to the public or carry-out. GR. 6-1100.
Senior Citizens regular meeting, 1st Methodist Church, 8 p.m. Will feature Salvation Army Equestrian Kitchen Band. All Farmington area senior citizens invited.
Elks Lodge-Fish Fry every Friday evening, 33300 Grand River. Call GR. 4-4934 for carry-out.

SEPTEMBER 12

Farmington Players presenting "Taming of the Shrew." Performance time 8:30 p.m. Open house in honor of Shakespeare's birthday. Open to the public.

SEPTEMBER 13

Special performance by Farmington Players in honor of the merchants of the Greater Farmington area. Reception will follow. "Taming of the Shrew."

SEPTEMBER 14

Pioneer Golden Age Club, Frontier House, 11 a.m., business meeting and luncheon.
Farmington Garden Club, Dinner at the Parker House, 7 p.m. Husbands and guests invited.
Farmington City Council Meeting, 8 p.m., City Hall.
Township Board Meeting, 8 p.m., Township Hall.
Farmington Board of Education Meeting, 8 p.m., Administration Building.

SEPTEMBER 15

Kiwanis, Bolsford Inn, 6:30 p.m.
Adult registration for adult education classes, 8:30 to 9:00 p.m., Farmington Senior, High.

SEPTEMBER 17

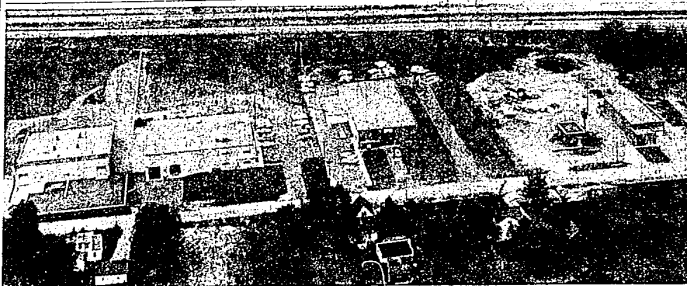
Senior Citizens Meeting every Thursday to make articles for the coming Fair. First Methodist Church, from 10:00 a.m. to 3:00 p.m.

SEPTEMBER 19

Altar Society Rummage Sale, Our Lady of Sorrows Parish Hall. Open to the public.

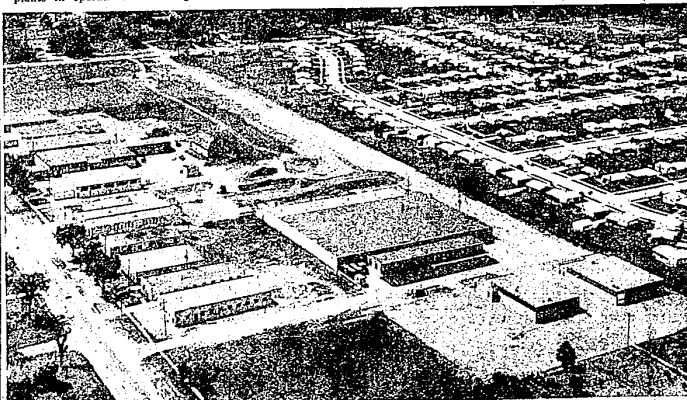
SEPTEMBER 22

Tent Fashion Show, 11:00, with Mary Morgan, 30555 Grand River.
Women of Kendallwood Farms, Fashion Show, St. Fabian's, 8:00. Members and guests invited. Children, teens and women's fashions.



THE NINE MILE ROAD industrial development in the City of Farmington still has about 16 acres undeveloped. Pictured in the aerial photograph above is the portion of the Nine Mile Road light industrial area which already has plants in operation. The Brighton-Farmington Express-

way can be seen at the top of the picture and Nine Mile Road can be seen forming the south boundary of the industrial area. These aerial photographs were taken by Enterprise photographer Ralph Evert.



THE CITY OF FARMINGTON'S Alta Berger Industrial Park area (pictured above) is nearing full development with 14 light industrial plants already located on the 23-acre site. In the aerial photograph above, Eight Mile Road can be seen in the extreme lower left hand corner. Farmington Road forms the western boundary of the industrial

park (top of picture) and a portion of Farmington Acres Subdivision can be seen in the upper right hand corner of the picture. The new industrial service drive now extends from Farmington Road, to the west, to Chesley Drive, to the east, forming the northern boundary of the industrial park.

Adversity has ever been considered as the state in which a man most easily becomes acquainted with himself, being free from flatterers.

—Samuel Johnson
Looking For Bargains? Enterprise Classified Ads.

Drive About to Open on North Side Of Growing City Industrial Park

City Manager John Dinan reported this week that the industrial service drive for the Alta Berger Industrial Park area, a 23-acre site at Farmington and Eight Mile roads in the City, is just about ready to be opened up to traffic.

The industrial drive, which extends east from Farmington Road to Chesley Drive, forms the northern boundary of the Alta Berger Industrial Park area. There are a total of 34 plants now located in the industrial park with an assessed valuation of one million dollars and providing the community with approximately \$53,000 in tax revenue annually.

THE PORTION OF THE INDUSTRIAL PARK

A similar industrial development along Nine Mile Road in the City presently has an estimated quarter of a million dollars in assessed valuation and provides the community with an additional \$14,000 in tax revenue. There are approximately 18 acres of the Nine Mile Road industrial park area still undeveloped. When totally developed, this area will represent a total assessed valuation of approximately one million dollars.

In addition to the direct benefit from the amount of taxes paid into the community from the light industrial plants, the purchasing power made possible by an estimated 600 employees working at these plants is substantial. A payroll of well over four million dollars annually is provided for these employees and a certain amount of this is retained by the community.

The 23-acre Alta Berger Industrial Development, if developed with above average homes, will yield the community an estimated \$45,000 in tax revenue on a total assessed valuation of some \$800,000. Each \$15,000 home yields approximately \$400 annually in taxes.

A going-away party was held last week for Brenda Foster, 13-year-old daughter of Mr. and Mrs. Fred Foster of Colchester in Farmington. The party for Brenda was given in the home of Mr. and Mrs. Russell Conway of Colchester Drive, Farmington, Tuesday night, September 11.

Fete Brenda Foster At Going Away Party

The two Conway boys, Russell Jr. and Robert "Hal" Conway, invited a total of 14 neighborhood friends to the party. Each of Brenda's friends chipped in 50 cents to provide funds for the refreshments. Brenda is moving with her family to Allen Park.

The books that help you most are those which make you think the most.

—Theodore Parker

Resident to Open Restaurant In Historic Florida Setting

Mrs. Alice W. Brown of 32680 Nine Mile Road in Farmington has purchased a Spanish style building in East Naples, Florida, and plans to open it as a restaurant approximately November 1 of this year.

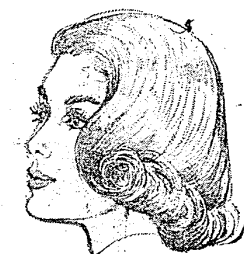
Mrs. Brown says there will be no structural changes in the building since she is interested in preserving its fine example of early Florida architecture. The proposed restaurant has a fine view of Lake Placid and will be air conditioned. It should be a fine place for fishermen or travelers to lunch or dine while in the East Naples area.

Shrine Club's Dinner Tonight

The Greater Farmington Shrine Club opens its Fall Season Thursday, September 10, with a dinner meeting at The Frontier Tavern (Parker House) 30580 Grand River Avenue. The social hour starts at 7 p.m. and dinner will be served at 8 p.m. The feature event of the evening will be the conferring of the Initiatory Degree of the Order of DeMolay by the young men of the Farmington Chapter. For reservations call GR. 4-3582, GR. 6-1700 or GA. 1-5416.

Back to College with an Jean's Easy-Care Permanent

Now You Can
"Charge-A-Wave"
or Other Beauty
Service Here
at JEAN'S with
your . . .



COUPON WORTH 100 TOWARD Any Perm or Tint THURSDAY ONLY

HAIR CUTS 100 With This Coupon WEDNESDAY ONLY



Open Evenings, Wed., Thurs., Fri. Until 9 p.m.

bel-aire beauty salon

GR. 4-7810

BEL-AIRE SHOPPING CENTER - ORCHARD LAKE RD. at 10 MILE RD.

BORED?

- Do you feel like a "trapped housewife"?
- Do you dread the coming winter months?
- Are you tired of kaffee klatches, bowling leagues, and time on your hands?
- Do you have an unfulfilled and frustrated creative urge?
- Do you long for new friendships, fun, and conversation while your hands are busy?
- Do you wish something would stimulate you to more interest in your personal appearance?
- Are you intrigued by fashion trends and coordinated clothes?
- Do you wish you could afford to wear high-style ensembles with that "custom-made" look?
- Would you like to model your own creations in a Hat Fashion Show?

MILLINERY CLASSES

DAY and EVENING
STARTING NEXT WEEK

12 HOURS \$6.50 - - - - - 18 HOURS \$10.00

FOR INFORMATION CALL

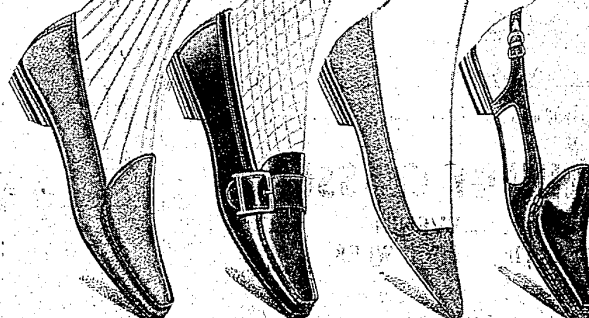
de Ancy CUSTOM MILLINERY

CUSTOM HATS 476-5160

MILLINERY SUPPLIES

31183 Ten Mile Rd. near Orchard Lake Rd.

a shoe dollar goes to school and a long way further
in American Girl
SHOE



Spare your purse and pamper your wardrobe with a shoebag full! 599 AND 699

Phone 474-7710

ROSS SHOES

FARMINGTON SHOPPING PLAZA

SHOP LATE
Mon., Thurs.,
Fri., Sat.
11-9 P.M.