

There's A Bucket Of Coins At Stake

Livonia Bank Opens New Mid-Seven Branch Thursday

Livonia National Bank will formally open its new Mid-Seven office Thursday at 9:30 a.m.

Located at the northeast corner of Middlebelt and Seven Mile roads, the new office—the bank's fourth—will provide full range banking services to nearby residents in addition to serving as a convenient banking center for persons visiting the massive Livonia Mall shopping center.

Commenting on the opening of the new office, bank president Fred Lavery said, "The dynamic growth of Livonia has brought an ever-increasing demand for banking services. This new office has been built as part of our continuing commitment to provide Livonia residents with the best possible banking facilities."

John Michlewicz, manager of the office, and his assistant, Joseph Bardon, will supervise the operations of the staff at the new facility, which has more than 6,000 square feet of service area, evenly divided between the building's two floors. Soaring white marble panels on the second floor exterior provide gleaming contrast to the black granite that covers ground level walls.

Two drive-up teller windows are spaced along the north wall of the building, where the night depository is also located. Customer parking for more than 40 cars is available in the spacious lot north of the building.

Interior decorators for the building, Robert Lowry Associates of Ann Arbor, have used wood tones and warm colors throughout the bank to convey a feeling of hospitality.

The first floor, in addition to the lobby area, has eight teller stations, an officers' platform, conference room, lounge area, and safe deposit vault section.

Oiled walnut wall-panels are accented with sections of vinyl wall covering in Nordic gold. Desks, furniture and teller stations are finished in walnut. Counter-tops of rust formica, drapes and carpeting in tones of gold, brown, russet and marigold, and ceramic tile insert panels in the corridor fronts that are done in gold and russet, provide contrasting highlights.

Paintings in a contemporary motif by the California artist Dietrich, add special notes of interest to the lobby and conference room. The paintings are done in a silk-screen process called serigraph.

The second floor contains the installment loan department and employees lounge with kitchen facilities.


Carpeting in the upstairs area is a soft gold that is picked up in the pale gold tones of the vinyl wall covering. Accent colors used in the furnishings are pumpkin, dark brown and lemon yellow.

Grand opening activities will include "open house" visits by the general public, with gifts for each person. In addition, cash prizes will be awarded to those who have lucky keys that open a treasure chest of money. The grand prize winner will be entitled to a bucket full of cash from the treasure chest.

In the words of President Lavery, "The people of Liv-

onia have fashioned a dynamic, growing city and it is the responsibility of our bank to keep pace by providing the most pro-

gressive banking service possible. This new office is a tangible expression of our belief in the future of Livonia."

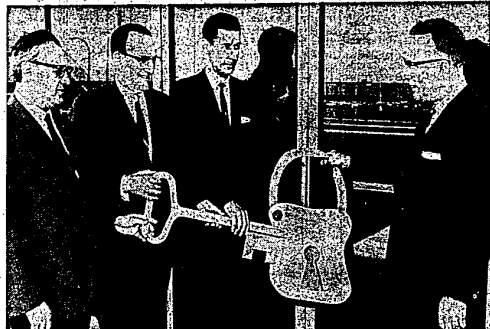


THE OBSERVER

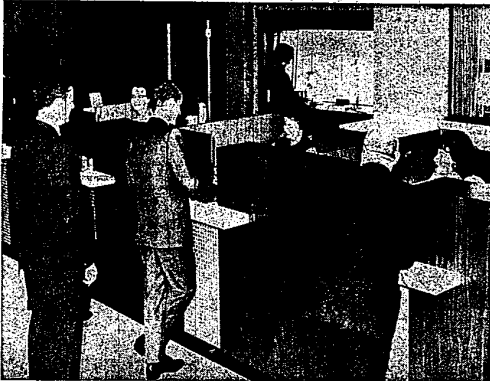
LIVONIA OBSERVER
PLYMOUTH OBSERVER
NANKIN OBSERVER

REDFORD OBSERVER
FARMINGTON OBSERVER
GARDEN CITY OBSERVER

Wednesday, July 14, 1965 Page 1-B



TURNING KEY in giant lock to officially open The group includes: (from left) Director E. of the Livonia National Bank's new branch at W. Marvin, Branch Manager John Michlewicz, Seven Mile and Middlebelt Rds. is President and Director Clarence Jahn. Fred Lavery assisted by other bank officials.



BUSINESS AS USUAL was the theme of workers in the new branch. Tellers are shown taking care of patrons, including the drive-in window. The new branch has parking facilities for more than 40 cars.

'65 BUICKS

CLOSEOUT

PRICES

JACK SELLE BUICK

200 ANN ARBOR RD.

PLYMOUTH, MICH.

JUST 2 MILES

FROM LIVONIA

SUMMER FLOOR CLEARANCE SALE!



Clearance of Chair Floor Samples

Fin Selection of Modern, Provincial and Colonial

SAVE 40% NOW

Priced From 29.95 to 179.95

BERRY'S DISCOUNT FURNITURE

25950 W. SIX MILE RD. WEST OF BEECH KE 2-5993

DIVISION OF BERRY'S HOME SUPPLY

Open Mon., Thurs., Fri. & Sat. 10 a.m. Tues. & Wed. 10-6 p.m.



THE HOTTEST VALUES IN TOWN

10-6-4 FERTILIZER
Covers 5,000 Sq. Ft. **\$117** Berry's Best Buy

G.E. STEAM, SPRAY & DRY IRON
Berry's Best Buy **\$1167** With Water Level

General Electric GLOCK RADIO
Berry's Best Buy **\$997**

Hoover Vacuum CLEANER BAGS
Berry's Best Buy **49¢** ea.

R.C.A. Whirlpool DEHUMIDIFIER
With built-in auto. humidistat. "BBB" **6195**

B.V.T. CAN OPENER and KNIFE SHARPENER
Berry's Automatic Best Combination Buy **\$997**

75-ft. 5/8" I.D. RUBBER HOSE
Berry's Best Buy **\$695**

Melnor Oscillating SPRINKLER
Berry's Best Buy **\$779** Reg. 12.95

G.E. 9-Cup Coffee Maker
Berry's Best Buy **\$995** Automatic

3/8" THOR DRILL
Berry's Best Buy **\$988**

20" Portable FAN
Berry's Best Buy **\$1397**

RAID Ant & Roach Killer
Berry's Best Buy **67¢**

POWER MOWERS
Close-Out on All

General Electric AUTOMATIC WASHER
Warehouse Special
Washer Family Size Loads **\$13981**

Zenith PORTABLE TV
Warehouse Special
• UHF-VHF **\$9941**

General Electric COLOR TV
Warehouse Special **\$297**

23" Emerson LOW BOY TV
Warehouse Special
• Walnut **\$15872**

McGraw Edison AIR CONDITIONER
Warehouse Special
• 4,000 BTU's **\$8995**

RCA Whirlpool AIR CONDITIONER
Warehouse Special
• 8,500 BTU's • 2-Speed Fan • Thermostat Control **\$16989**

19" General Electric PORTABLE TV
Warehouse Special
• UHF-VHF **\$11782**

14 Cu. Ft. Philco CHEST FREEZER
Warehouse Special
• Deluxe Model **\$168**

RCA Whirlpool AIR CONDITIONER
Warehouse Special
• 11,000 BTU's • 2-Speed Fan • Thermal Control **\$20681**



GENERAL ELECTRIC AIR CONDITIONER

\$9997



G.E. Portable DISH WASHER
Warehouse Special **\$10982**

6,000 BTU's—G.E. AIR CONDITIONER
Warehouse Special **\$9995**

5,000 BTU's Philco AIR CONDITIONER
Warehouse Special **\$138**

GENERAL ELECTRIC REFRIGERATOR

TA125A

- DIAL DEFROST
- ONLY 28" WIDE
- 12 CU. FT.
- FREEZER CAP. 63 LBS.
- 2 DOOR SHELVES

\$14787

GENERAL ELECTRIC WASHER

• 2 SPEEDS • 2 WASH CYCLES • FAMILY SIZE LOADS

\$14987

• NO MONEY DOWN • 36 MONTHS TO PAY • FAST, CAREFUL DELIVERY • SERVICE AFTER THE SALE

BERRY'S HOME SUPPLY

BERRY'S STORE and WAREHOUSE OUTLET

Open 9:30 a.m. to 9 p.m. Daily

27419 JOY ROAD at Inkster Road KE 5-5060 or GA 1-1717

CLOSED SUNDAY