

# Banquet With an International Flavor Set for Thursday



DR. ALBERT E. BURKE

Eighteen foreign exchange students studying in western Wayne and Oakland county schools will be the guests of The Observer and Burroughs Corp. at a dinner tomorrow night in the Mayflower Hotel, Plymouth.

Along with their American host families and officials of the American Field Service and Youth for Understanding programs, the students will feast on a re-created original Thanksgiving Dinner. About 125 persons are expected to attend the dinner.

Guest speaker at the banquet will be Dr. Albert E. Burke, star of the syndicated "Probe" television show, and former director of graduate studies at Yale University. Dr. Burke replaces Mrs. Margaret Shriver, who was originally scheduled to speak, but who has cancelled her December engagements.

U.S. Congressman Wes Virman will also be an honored guest. The dinner is the second held this year in tribute to students from abroad studying in Livonia, Plymouth, Redford Township, Farmington, Nankin and Garden City.

The first, held during Brotherhood Week last February, heard Mrs. George Romney, Paul M. Chandler, the late publisher of The Observer Newspapers, and former state representative, planned the program prior to his death.

This year, Burroughs Corp., a leading industrial corporation of western suburbs, is co-sponsoring the banquet with The Observer.

Observer Publisher Mrs. Myra Chandler and Edward W. Scheping, general manager of Burroughs' Plymouth plant, will be at the speakers' table.

Schening, a 30-year veteran with the Corporation, who has served as general manager in Plymouth since last June, will be master of ceremonies. Pastor Ronald Starenko of Faith Lutheran Church in Livonia will give the invocation and Skip Rosenbush, Livonia Librarian, will entertain with his banjo.

Students will be eating an authentic Thanksgiving Feast patterned after that originally eaten by the Pilgrims in New England. Hot Spiced Cider, Pumpkin Soup, Roast Goose and Native Turkey and Cranberry Tort Priscilla are some of the menu items.

Students invited to the dinner include:

Mary Ann Krulich (W. Germany), Alan Jeffrey Caswell (U.K.) and Ingeborg Masmahl (W. Germany), from Bentley High School; Beyza Untina (Turkey) from Thurston High School; Monica Raffell (Argentina), Mats Alberts (Sweden), Bengt Hansen (Sweden), Leena Rosenber (Finland) and Jutta Wachtendorf (W. Germany), from North Farmington High School; Richard Kummrow (Switzerland), from Franklin High School; and Geraldine van de Rijl (South Africa) from Clarencville High School.

Also Ervin Furlan (Guatemala), and Lars Jensen (Denmark), from Farmington High School; Eva Marie Dietrich (W. Germany) from Ladywood High School; Marianne Tommick (Austria), from Plymouth High School; and Mario Galleto (Brazil), Pierre Hirtz (Luxembourg), and Heidi Scherckamp (W. Germany), from Redford Union High School.

The dinner will begin at 6:30 p.m. in the Mayflower Room of the Mayflower Hotel.

## Garden City Accountant Joins N.A.A.

The Oakland County Chapter of the National Association of Accountants has elected a new member from the Garden City area. He is Frank G. Wilming, 7428 Kubis, Garden City, who is a senior accounting assistant, for The Detroit Edison Company.

N.A.A. is an organization which provides opportunities for its members to increase their knowledge of accounting practices and methods.

## THIRD ADDITION IN TWO YEARS

# Evans Slates \$3 Million Expansion

"The Transportation Equipment division of Evans Products continues to grow," said Vice President and Division Manager James Conway Monday as he announced a \$3 million addition, the third for the Plymouth plant in less than two years.

Work is already underway on the newest expansion which will increase the size of the railroad car building plant to 300,000 sq. ft. and the overall plant to more than 800,000 square feet.

Thus in the short time of two years, Evans has boosted the Plymouth Township tax base by more than \$6 million and hiked the school tax base by the same amount. This without all of the fanfare that came in recent months with the announcement of the location of several small industries in the community.

It was in 1964 that Evans' car-building plant covered 57,000 square feet and the two expansions, including the newest, have boosted that to more than 300,000.

Matter of fact, it was only a few months ago that Conway made a similar announcement of a \$1.5 million expansion. Workers had barely started building cars there until the latest improvement was announced.

Conway said the latest addition includes \$2.5 million in building construction with the balance in machinery and equipment. He also told of plans for an addition to the present research facilities with a proposed 18,000 square foot building to be added.

The Evans Vice President said the new addition, when completed, will enable the plant to equip 150 freight cars at one time. The additional facilities will increase the capacity from the present five to 10 new freight cars daily.

Conway indicated the new addition will probably boost Evans' payroll to more than 1,200 workers—the highest level in recent years.

"We can't say the expansion will add 200 employees," he quickly added, "We can use almost that many skilled workers right now but unfortunately they aren't available. There are men available for jobs but very few for the skilled positions we are trying to fill."

It was slightly more than two years ago that Evans moved the truck heater division from the Plymouth plant and sold the bicycle division to an outside firm. This required the shifting of almost 200 men but at that time Evans' officials stated they believed new types of jobs would more than make up for it.

That's when the company decided to go into the new freight car construction business. And the division has done nothing but climb ever since.

In 1961, the division's sales totaled a scant \$1 million and the entire company's \$98.3 million. Last year the division's share had soared to \$42 million, all but \$10 million in the rail business, and the company's total climbed to \$181.1 million.

This year Evans expects to exceed \$200 million. Of this total, some \$20 million will be generated by the division, including \$42 million in rail equipment.

At the moment, the division has a backlog of \$30 million and that's 10 times that of 1962 for transportation equipment alone.

Evans was first organized in 1915—in Detroit but moved to the 115-acre site in Plymouth in 1945. It ranked 313th in dollar volume in 1964 among the nation's leading companies.

The Transportation Division includes five plants, all under the control of Conway, located at: Grand Rapids, Plymouth and Gagetown in Michigan; Annapolis, Md.; Blue Island, Ill., and in Chicago.

WHILE SPELL SUCCESS to executives of Evans Products Co., especially the Transportation Equipment division in Plymouth, and Public Relations Director Sam Hudson (right) is shown pointing to the new 610-foot bay that is part of the new expansion program announced Monday.

Listening to Sam are: (from left) G. H. Decker, general manager of Railway Car Building Operations; John P. Moorhead, Director of Research and Development at the plant; and Vice President and Divisional Manager James Conway.

Madonna Benefit Listed Monday at Thunderbird at Thunderbird

The Madonna College Advisory Board, with the cooperation of the owners and operators of the Thunderbird Inn, will stage the annual benefit dinner-dance at the Inn on Monday at 8 p.m.

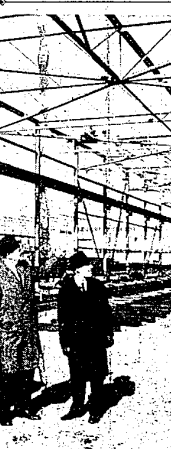
John Carlo and Arthur Kobierzynski, owners of the plush eating place, are donating the entire proceeds of the affair to a college scholarship fund.

The arrangements are being handled by Thomas Boscon, Donald Boscon, Jerry Scully and George Rovin.

The Thunderbird Inn management has arranged to have the Ink Spots, who will be there on Monday and Tuesday night, furnish the entertainment.

Ranks High in Sales

PAUL M. DAVIDSON, 19650 Deering, Livonia, an associate of a Detroit general agency of life insurance, ranked high twice in the firm's recent fourth annual autumn sales campaign. Davidson was 20th in volume nationally, with \$550,500 of life insurance applications, and 24th in percentage of quota achieved, 618 per cent in the five-week competition.



WITH STRUCTURAL STEEL framework overhead and building going on in all directions, James Conway, vice president and divisional manager of Evans Products Co. Transportation Equipment division with central offices in Plymouth, shows three of his top aides the

scope of an expansion program announced Monday. Work is already underway. Shown with Conway are: (from left) John P. Moorhead, G. H. Decker, Conway and Public Relations and Division Advertising Director Sam Hudson.

## 18-Year-Old Girl in Coma After Accident

An 18-year-old Southfield girl is in a coma in St. Mary Hospital as a result of injuries suffered when a car in which she was riding was involved in a head-on crash following a three-car accident near the Middlebelt Road exit from the Livonia Mall.

Sandra Friend, of 23745 Samoset Trail, Southfield, suffered serious head injuries and a broken leg, according to Livonia Police reports.

The accident happened, the reports show, when a car operated by John Turk, 20, of 26322 Havencrest, Farmington, started out of the exit to make a left turn on Middlebelt. Turk told investigating officers he saw a car approaching from the north but thought he had time to make the turn.

The approaching car driven by DeWayne Stephenson, 21, of 14280 Minehart, Plymouth, came up faster than Turk realized and he stepped on the brakes, he told officers. However, the Stephenson car, in which Miss Friend was riding in the front seat, struck Turk's car and then pivoted across the center line into a northbound car driven by Mrs. Marcelle Luther, of 4954 Brownfield Lane, Birmingham, hitting it head-on.

Miss Friend and Stephenson, along with Mrs. Luther and her son David, were rushed to the hospital for treatment.

The police reports show that Miss Friend was still unconscious late Monday night.

Nankin JP Leaves Post

Nankin Justice of the Peace Michael W. Bradley has taken leave of his bench until charges of malfeasance have been resolved by Gov. George Romney.

The 36-year-old attorney and judge has been accused by Grand Juror Edward S. Piggins, conducting a one-man grand jury investigation in ticket-fixing in the Wayne County Sheriff's Department, of irregularities in the conduct of his justice court.

Piggins has asked that the governor remove Bradley from the post he has held since 1955.

Bradley's lawyer, Robert E. DeMasco, has denied the allegations and said, "I am sure my client will be vindicated." Among the charges Piggins recited are that Bradley:

- Removed or destroyed certain public records from his court.
- Entered convictions for traffic violations against some defendants without their knowledge.
- Failed to tell the Circuit Court of his knowledge of ticket fixing by the Wayne County Sheriff's Department.
- Suspect sentence or dismissed many traffic cases involving members of United Auto Workers Local 182, located at 35603 Plymouth Rd., Livonia.

Livonia DPR to Open Night Gym Programs

The Livonia Recreation Department plans to open its evening gym program beginning next week with the schedule as follows: Mondays at Madison, Tuesdays at Webster and Adams, Wednesdays at Johnson, Thursdays at Hall and Lincoln, and on Fridays, at McKinley and Cleveland.

Recreation periods are scheduled from 6 p.m. to 8 p.m. for boys 12 through 15 years of age and from 8 p.m. to 10 p.m. for those 16 years through adults. The program will consist of basketball, volleyball and activities according to the desire of the group.

## Observer Second Front Page

Wednesday, December 1, 1965 Page ★ 3A

## Livonia Man Killed In Spectacular Crash

William Franklin, 34, of 14421 Melvin, Livonia, became the city's 12th traffic victim of the year when he was tossed out of a car that apparently skidded out of control on Schoolcraft midway between Inkster and Middlebelt Roads, and rammed into the embankment of the island, according to Livonia Police reports.

Police are still trying to determine the driver of the car. They know that Franklin and Richard Pollum, 20, of 1709 Arcola, Garden City, were in the car but the latter told officers he didn't know who was driving.

Farnum, a freshman Democrat Congressman for Michigan's 19th District (which includes Farmington) will discuss the 60th Congress. He was cited by Washington newsmen as one of the four outstanding freshman representatives last session.

A question and answer period will follow the talk.

Reservations can be made for the dinner by calling GR 64457.

Holley to Speak to Livonia Democrats

Excise assessor Milton Holley will speak on "The Truth About Your Taxes" before the Livonia Democratic Club at 8:30 p.m., Dec. 2 at Mitch House's Restaurant, Schoolcraft near Middlebelt.

The public is invited.

Pollum was rushed to St. Mary Hospital with serious injuries but was released three days later. Franklin died within hours after his admission to the hospital.

The car was going west on Schoolcraft when it apparently went off the right shoulder for some 100 feet where it swerved across both lanes, reared across the island another 82 feet where it hit a mound of dirt.

It tipped in the air, according to the reports, sailing about 30 feet and then slid another 34 feet before the front end dug into the ditch.

Franklin was thrown from the car when it hit the ditch and his body spun 110 feet across the eastbound lanes and onto the south shoulder. He was believed dead when police arrived.

Pollum also was thrown from the car into the ditch and when it landed on its top it fell across him from the waist down.

Want ads get quick results!

QUIET QUALITY

IN ALL '66 FORDS!

as low as

FOR THE BEST DEAL IN TOWN SEE "BILL BROWN"

\$43<sup>94</sup> Per Month With \$4 Down

DELIVERED Includes All Taxes and License Plates

AT

**BILL BROWN FORD, INC.**

32222 PLYMOUTH ROAD

GA 1-7000 LIVONIA, MICHIGAN KE 2-0900