

Sports

THE FARMINGTON ENTERPRISE

October 30, 1966

Lancers Romp To Sixth Win

by Harry Lapham.
OLS powered its way last week to its sixth straight victory by walloping Nativity 40-0. After a slow start, the Lancers romped through Nativity defense gaining 314 yards on the ground and 129 in the air. Cliff LaFond ran for 212 yards and Dave Hickey for 62 to lead the attack. A staunch Lancer defense held their opponents to only 139 yards.

In the closing seconds of the first quarter Jim McGrath threw a 77 yard touchdown pass to Tim Audette for the first score of the game. McGrath ran for the extra point. Cliff LaFond scored the second touchdown as he galloped 37 yards. Dave Hickey crashed over for the extra point. The first half ended with the score 14-0.

In the third quarter Sorrows unloaded all their guns on Nativity. The scoring blitz began with a 48 yard sprint by Cliff LaFond through the middle of Nativity's line. Hickey ran for the extra point.

The next time they got the ball, the Lancers marched 70 yards in three plays. A 39 yard run by LaFond put the ball on Nativity's 27. Then McGrath threw a 27 yard pass to John Allen who took it in for the TD. The fifth touchdown was the result of a 39 yard run by Cliff LaFond around left end as he broke loose from several tackles.

The last scoring play came

Falcons, Drop Homecoming

By RON SCHULZE
FHS Sports
Farmington 19, Walled Lake 7 with six minutes remaining on the clock. Six more minutes to wait out before an In-Lakes title, ranking among the state's top teams, and a possible undefeated season.

A 55' 155 lb. fullback and an opportunistic punter, Walled Lake team completely pounded and pulverized those Falcons hopes for a glorious season. "Mighty Mile" Gus Maragou scored two touchdowns, the last following a Farmington fumble on an inside kick, to lead an outplayed Viking squad to a shocking 21-15 victory in the final six minutes.

For the better part of four quarters, Farmington's previously undefeated legions had fought the highly rated Viking squad into apparent submission. Ed Snyder and Dan Wolfman outplayed their Walled Lake counterpart by completing 9 of 17 for 155 yards and two touchdowns. The ground attack, led largely by Wolfman, added another 100 yards. And the defense seemed to jell in key situations.

Adult Swimming

Adult recreation swimming is available at the Clarenceville High School pool on Wednesday evenings from 8 to 9 p.m. for a charge of 40 cents.

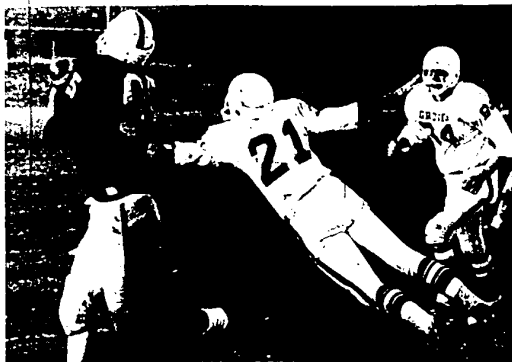
Take Fourth

The Falcon cross-country could do no better than fourth in the all-important Inter-Lakes Conference meet held at Cass Benton Park last Thursday.

Pontiac Northern, defending Inter-Lakes Conference champions, protected their title by a surprisingly large margin of 27-45 over pre-meet favorite, Walled Lake. Waterford finished third with a total of 56 points, followed by Farmington with 96, and Livonia Stevenson with 140.

Jim Lindler of Walled Lake repeated as individual Conference champion for the second year in a row. For Farmington Bob Donovan finished 13th, Russ Roth 15th, Pete Sevin 18th, Mike Hines 24th, and Dick O'Connell 26th.

The FIS team faced at the Clarenceville Invitational, also held at Cass Benton Park, last Tuesday. They finished fifth in a field of 15. Bob Donovan led the way for Farmington with a fourth place finish out of over 100 runners.
D. Shires, Journalism I



THIS MIGHT BE ENTITLED "Copping a Pass" as Rich Copp (No. 95) catches the pigskin for the Raiders with Rich Wiggins (No. 21 for Groves) executing a graceful

Raiders Bow To Groves In Hard Fought Game

By Ty Madge

The Northwest Suburban championship was possibly at stake last Friday as Birmingham Groves and North Farmington squared off on the Raiders' home field and the issue appeared solved from the opening kickoff. Groves moved the ball at will, with sharp passing by quarterback Mike Rafferty and powerful running by the Falcon backs.

Early in the first period, Greg Wood opened the scoring with a 10 yard dash, and before the Raider fans had their popcorn secure, Groves led, 19-0. An outstanding 70 yard punt return by sophomore John Thomas to the Falcon one inch line was wasted as North Farmington fumbled the ball away.

Groves opened the second half ready to add insult to injury, as Gary Wallace intercepted a Raider pass and Groves marched 35 yards for the score, with Steve Beshler going the final three yards.

As the scoreboard read 26-0 in favor of the Birmingham crew, and people in the Raider stands talked about next year, Norm DeCourcy threw a 12 yard scoring pass to Richard Copp, and the Raiders proved they would not lie down. Victorious defense and renewed spirit paved the way for a stirring comeback, featuring a 30 yard pass interception of a Rafferty pass by defense end Don Gaba, and a one yard plunge by Steve Heyn for two more Raider scores. Rich Chapman's successful onside kick gave North Farmington one last hope with 2:35 showing on the clock.

STATE OF MICHIGAN COUNTY OF OAKLAND

ELECTION NOTICE

TO THE QUALIFIED ELECTORS OF THE COUNTY OF OAKLAND,
STATE OF MICHIGAN

NOTICE IS HEREBY GIVEN that at the General November

Election to be held in the

CITY OF FARMINGTON,
County of Oakland and State of Michigan on Tuesday, November 7, 1966 from 7:00 o'clock in the forenoon until 8:00 o'clock in the afternoon Eastern Standard Time, the following will be submitted to the Electors of said

CITY OF FARMINGTON.

For the Purpose of Electing the Following Officers, Viz:

STATE—Governor & Lieutenant Governor, Secretary of State, Attorney General, Members of State Board of Education, Board of Regents of the University of Michigan, Michigan State University Board of Trustees, Wayne State University Board of Governors.

CONGRESSIONAL—United States Senator (Full Term), United States Senator (To Fill Vacancy), Representative in Congress.

LEGISLATIVE—State Senator, State Representative.

And Also Any Additional Officers That May Be On The Ballot

For the Purpose Of Electing the Following Officers, Viz:

NON-PARTISAN ELECTION

Two Justices of the Supreme Court Two Judges of the Circuit Court for terms ending Jan. 1, 1977; Two Judges of the Circuit Court for terms ending Jan. 1, 1973; Three Judges of the Circuit Court for terms ending Jan. 1, 1969; One Judge of the Circuit Court for term ending Jan. 1, 1967; One Judge of the Probate Court for term ending Jan. 1, 1973; One Judge of the Probate Court for term ending Jan. 1, 1973.

And To Vote On The Following Constitutional Amendments:

PROPOSAL NO. 1

Proposed amendment to lower the minimum voting age from 21 years to 18 years.

And To Vote On The Following County Propositions:

I. Parks and Recreation

FOR THE PURPOSE OF ACQUIRING OPEN SPACE TO DEVELOP PARKS AND RECREATION FACILITIES FOR THE PEOPLE OF OAKLAND COUNTY
Shall the tax limitation on the total amount of general ad valorem taxes which may be imposed each year for all purposes upon real and tangible personal property in Oakland County, Michigan, be increased as provided in Section 6, Article IX of the Constitution of Michigan for a period of five years from 1967 to 1971, both inclusive, by one-quarter (1/4) mill, twenty-five cents (25c) per One Thousand Dollars of the assessed valuation as finally equalized for the purpose of acquiring, developing, operating and maintaining Parks and Recreation areas in Oakland County, Michigan?

II. Oakland County Merit System.

Shall the action of the Oakland County Board of Supervisors dated September 19, 1964 enacting resolution No. 4000 establishing a merit system for the employees of the County of Oakland be approved?

All properly registered electors may vote on these Propositions.

**STATE OF MICHIGAN
COUNTY OF OAKLAND**

I. JOHN D. MURPHY, County Clerk of the County of Oakland and Clerk of the Board of Supervisors of said County of Oakland, do hereby certify that the foregoing mentioned Resolutions were duly adopted by the favorable vote of a majority of the Members of said Board of Supervisors at a regular meeting of said Board of Supervisors held in the Oakland County Building.

**JOHN D. MURPHY
County Clerk**

COUNTY TREASURER'S STATEMENT AS REQUIRED BY ACT 193 OF THE PUBLIC ACTS OF 1947

I, JAMES E. SEETERLIN, County Treasurer of the County of Oakland, State of Michigan, do hereby certify that according to the records in my office, as of October 7, 1966 the total of all voted increases in the tax rate limitation above the 15 mill established by Section 6 of Article IX of the Michigan Constitution of 1963, affecting intangible property in the County of Oakland, State of Michigan, is as follows:

| Public Corporations | Voted Increases | Years Effective |
|--|-----------------|--------------------|
| County of Oakland | None | |
| Township of Bloomfield | 1.00 | 1963 to 1972 Incl. |
| | 1.30 | 1966 |
| | 2.80 | 1967 to 1976 Incl. |
| | .50 | 1966 |
| Township of Farmington | 1.00 | 1967 to 1976 Incl. |
| | 2.00 | 1964 to 1973 Incl. |
| | 1.00 | 1962 to 1981 Incl. |
| | .50 | 1965 to 1984 Incl. |
| Township of Highland | 1.00 | 1958 to 1967 Incl. |
| Township of Holly | .50 | 1962 to 1966 Incl. |
| Township of Independence | 1.00 | 1959 to 1978 Incl. |
| Township of Orion | 1.00 | 1965 to 1969 Incl. |
| Township of Oxford | 1.00 | 1965 to 1984 Incl. |
| | 2.00 | 1955 to 1974 Incl. |
| Township of Southfield | 1.00 | 1963 to 1967 Incl. |
| Township of West Bloomfield | | |
| School Districts | | |
| County School District of Oakland County | .50 | 1954 to 1969 Incl. |
| Oakland Community College | .50 | Unlimited |
| County School District of Lapeer County | .50 | Unlimited |
| Intermediate School District of Genesee County | .50 | Unlimited |
| County School District of County of Macomb | .50 | 1956 to 1970 Incl. |
| Almont Community School Dist. No. 12 | 5.00 | 1956 to 1971 Incl. |
| | 7.50 | 1953 to 1974 Incl. |
| | 3.00 | 1964 to 1966 Incl. |
| | 3.00 | 1967 to 1968 Incl. |
| | 2.00 | 1967 to 1968 Incl. |
| Romeo Community School District | 8.00 | 1956 to 1975 Incl. |
| Macomb and Oakland Counties | 3.00 | 1961 to 1967 Incl. |
| | 3.00 | 1962 to 1968 Incl. |
| | 4.00 | 1964 to 1968 Incl. |
| | 4.00 | 1966 to 1970 Incl. |
| | 7.75 | 1954 to 1972 Incl. |
| Rochester Community School District | 7.00 | 1963 to 1967 Incl. |
| Oakland and Macomb Counties | 2.00 | 1964 to 1968 Incl. |
| | 5.00 | 1966 to 1975 Incl. |
| | 3.00 | 1965 to 1966 Incl. |
| | 6.00 | 1964 to 1968 Incl. |
| | 2.00 | 1965 to 1969 Incl. |
| | 3.90 | 1966 to 1970 Incl. |
| | 4.50 | 1953 to 1972 Incl. |
| | 4.00 | 1954 to 1973 Incl. |
| | 11.00 | 1962 to 1966 Incl. |
| | 7.50 | 1965 to 1968 Incl. |
| Bloomfield Hills School District | 10.00 | 1959 to 1973 Incl. |
| | 7.60 | 1962 to 1976 Incl. |
| | 2.00 | 1962 to 1976 Incl. |
| | 3.30 | 1965 to 1977 Incl. |
| School District No. 3, Filled, annexed to Bloomfield Hills School District | 10.00 | 1964 to 1973 Incl. |
| Brandon School | 8.00 | 1966 to 1968 Incl. |
| Lapeer Public Schools, counties of Lapeer and Oakland | 4.00 | 1964 to 1966 Incl. |
| Walled Lake Consolidated Schools | 3.00 | 1965 to 1967 Incl. |
| | 1.00 | 1960 to 1967 Incl. |
| | 1.00 | 1964 to 1967 Incl. |
| | 1.00 | 1965 to 1969 Incl. |
| | 4.00 | 1966 to 1970 Incl. |
| Farmington Public Schools | 9.00 | 1956 to 1973 Incl. |
| | 3.00 | 1965 to 1966 Incl. |
| | 5.00 | 1963 to 1972 Incl. |
| | 2.00 | 1965 to 1973 Incl. |
| | 2.00 | 1964 to 1970 Incl. |
| | 3.00 | 1967 to 1976 Incl. |
| | 4.80 | 1966 to 1975 Incl. |
| | 1.00 | 1967 to 1976 Incl. |
| Clarenceville Schools, Oakland and Wayne Counties | 4.00 | 1962 to 1966 Incl. |
| | 1.00 | 1968 to 1966 Incl. |
| | 2.00 | 1964 to 1966 Incl. |
| | 1.00 | 1965 to 1969 Incl. |
| | 7.00 | 1966 to 1975 Incl. |
| Schoolcraft College | 1.00 | 1962 to 1981 Incl. |
| | .77 | 1962 to 1981 Incl. |
| Goodrich Area School District, Counties of Genesee, Lapeer and Oakland | 4.00 | 1965 to 1966 Incl. |
| | 8.00 | 1966 to 1967 Incl. |
| | 2.50 | 1966 to 1967 Incl. |
| | 2.50 | 1966 to 1967 Incl. |
| Grand Blanc Community Schools, Genesee and Oakland Counties | 6.00 | 1963 to 1967 Incl. |
| Holly Area Schools | 4.00 | 1966 to 1970 Incl. |
| | 7.00 | 1962 to 1966 Incl. |
| | 5.00 | 1960 to 1969 Incl. |
| Clarkston Community Schools | 3.00 | 1955 to 1970 Incl. |
| | 5.00 | 1963 to 1972 Incl. |
| | 5.00 | 1966 to 1975 Incl. |
| South Lyon Community Schools, Oakland and Livingston Counties | 8.50 | 1964 to 1968 Incl. |

School Districts (Continued)

| | | |
|--|-------|--------------------|
| Huron Valley Schools | 7.50 | 1959 to 1975 Incl. |
| | 3.00 | 1963 to 1967 Incl. |
| | 5.00 | 1964 to 1968 Incl. |
| | 7.00 | 1966 to 1968 Incl. |
| | 3.00 | 1968 |
| Northville Public Schools, Wayne, Oakland and Washtenaw Counties | 10.00 | 1966 to 1970 Incl. |
| Now Community Schools | 7.00 | 1966 to 1970 Incl. |
| Farm School District No. 8, annexed to Now Community Schools | 5.50 | 1963 to 1967 Incl. |
| Lake Orion Community Schools | 3.00 | 1964 to 1967 Incl. |
| | 8.00 | 1950 to 1966 Incl. |
| | 8.00 | 1955 to 1974 Incl. |
| Oxford Area Community Schools | 4.00 | 1964 to 1968 Incl. |
| Pontiac City Schools, located in the Cities of Pontiac, Sylvan Lake and Townships of Avon, Bloomfield, Orion, Pontiac, Waterford and West Bloomfield | 4.00 | 1965 to 1969 Incl. |
| Lake Orion Community Schools | 9.00 | 1965 to 1967 Incl. |
| Oak Park Schools | | |
| | 8.75 | 1965 to 1974 Incl. |
| | 3.90 | 1963 to 1967 Incl. |
| | 1.60 | 1965 to 1969 Incl. |
| | 6.00 | 1954 to 1973 Incl. |
| | 8.50 | 1963 to 1972 Incl. |
| | 5.00 | 1964 to 1968 Incl. |
| | 3.00 | 1964 to 1968 Incl. |
| | 3.00 | 1965 to 1979 Incl. |
| | 5.00 | 1966 to 1980 Incl. |
| Lamphere Public Schools | 6.00 | 1951 to 1970 Incl. |
| | 9.00 | 1954 to 1973 Incl. |
| | 5.00 | 1963 to 1967 Incl. |
| | 5.00 | 1964 to 1968 Incl. |
| Royal Oak City Schools | 7.50 | 1956 to 1971 Incl. |
| | 6.90 | 1956 to 1974 Incl. |
| | 6.50 | 1964 to 1968 Incl. |
| | 6.75 | 1965 to 1969 Incl. |
| Berkley City Schools | 5.50 | 1953 to 1969 Incl. |
| | 4.50 | 1953 to 1972 Incl. |
| | 5.00 | 1962 to 1974 Incl. |
| | 7.00 | 1961 to 1966 Incl. |
| | 3.00 | 1963 to 1970 Incl. |
| | 5.00 | 1965 to 1974 Incl. |
| Hazel Park City Schools | 3.00 | 1957 to 1966 Incl. |
| | 3.00 | 1959 to 1968 Incl. |
| | 3.00 | 1962 to 1971 Incl. |
| | 3.50 | 1966 to 1970 Incl. |
| Fendale City Schools | 3.00 | 1967 to 1976 Incl. |
| Madison District Schools | 17.00 | 1966 to 1970 Incl. |
| | 12.50 | 1951 to 1970 Incl. |
| | 7.50 | 1953 to 1972 Incl. |
| | 7.00 | 1962 to 1966 Incl. |
| | 5.00 | 1964 to 1968 Incl. |
| Clawson City Schools | 13.50 | 1953 to 1972 Incl. |
| | 4.00 | 1963 to 1967 Incl. |
| | 5.00 | 1964 to 1968 Incl. |
| Southfield Public Schools | 4.50 | 1953 to 1972 Incl. |
| | 5.00 | 1962 to 1966 Incl. |
| | 3.00 | 1964 to 1968 Incl. |
| | 3.00 | 1966 to 1970 Incl. |
| School District No. 4 of Springfield Township, annexed to Holly Area School District | 19.00 | 1949 to 1968 Incl. |
| Tray City Schools | 8.00 | 1968-69 Incl. |
| | 5.00 | 1965 to 1969 Incl. |
| Warren Consolidated Schools | 5.00 | 1963 to 1967 Incl. |
| | 9.00 | 1964 to 1968 Incl. |
| | 5.00 | 1966 to 1970 Incl. |
| Waterford Township Schools | 5.40 | 1953 to 1971 Incl. |
| | 5.00 | 1954 to 1972 Incl. |
| | 2.50 | 1964 to 1968 Incl. |
| | 2.50 | 1963 to 1968 Incl. |
| | 10.00 | 1964 to 1968 Incl. |
| West Bloomfield Schools | 9.00 | 1963 to 1972 Incl. |
| | 9.00 | 1966 to 1970 Incl. |
| Dublin School, School District No. 7 of Township of White Lake | 6.00 | 1962 to 1969 Incl. |
| | 8.00 | 1964 to 1968 Incl. |
| | 4.00 | 1966 |

**Oakland County Treasurer's Office
JAMES E. SEETERLIN
James E. Seeterlin, Treasurer**

THIS NOTICE is given pursuant to the Statutes of the State of Michigan in such case made and provided.

**TRENA M. QUINN
CITY CLERK**

18-30, 11-6-66

ELECT
* **THREE TOP NOMINEES LAWYERS' OFFICIAL POLL**
AS YOUR **THREE NEW OAKLAND COUNTY CIRCUIT JUDGES!**

* **William R. BEASLEY**

* **Farrell E. ROBERTS**

* **Robert L. TEMPLIN**