

# Local Firm Wins Campus Contract

A Farmington firm has won a landscaping contract for the second phase of a master landscaping plan for the Schoolcraft Community College campus.

Wayne Oakland Landscaping and Nursery Sales was lowest of five bidders at \$19,308 and won the contract last week from the Schoolcraft board of trustees.

The work, which will concentrate on the campus mall, will be completed by June.

Other bidders were Charles F. Irish Co., Warren, \$28,155; Lars Henderson Landscaping, Birmingham, \$24,870; Harold Thomas Nursery, Livonia, \$25,622; and Michigan Landscaping Co., Riverview, \$22,306.

IN OTHER business, the Schoolcraft College board:

- Approved plans for remodeling of the Administration Building and authorized a call for bids for the work. The interior of the building is to be modified to provide additional working space for the president's office, the business office, and the office of instruction.
- Approved purchase of \$5,814 in furniture for the Office of Student Affairs, which is scheduled to vacate its present suite in the Administration Building and move into new quarters being prepared in the former student center in July.
- Authorized a call for bids on developing a new parking lot at the south end of the campus. The project timetable calls for completion of the new lot in late July.

## Highway Landscape Pact OK'd

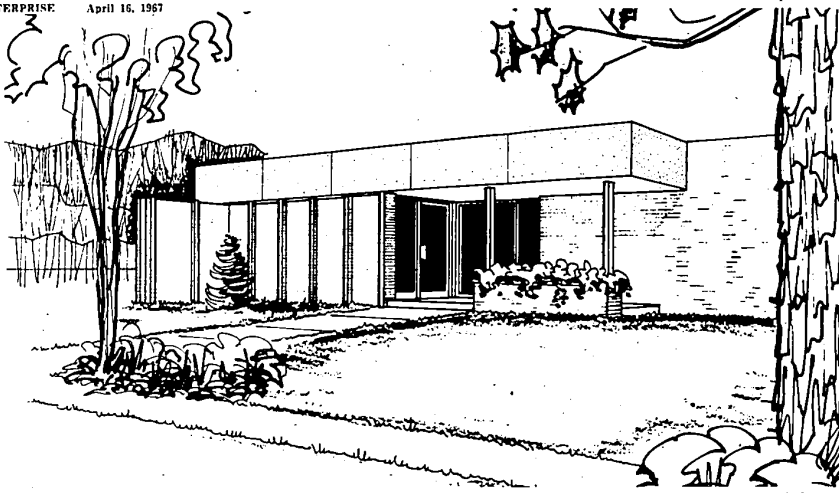
Wayne Oakland Landscaping and Nursery Sales of Farmington has been awarded a \$39,746 contract for landscape development on I-75, according to the State Highway Department.

The work will be on 5.5 miles of the expressway road of Mt. Clemens Street to west of Baldwin Road.

The project will be financed 90 per cent from federal funds and 10 per cent from the state.

**On Dean's List**

Carol Weber, daughter of Mr. and Mrs. Edward E. Weber of 32022 Wayburn Drive, has been named to the second term dean's list of Northwestern Institute, Midland. She is majoring in liberal arts.



OAK HILL NURSING HOME, now under construction at Grand River and Gill Road, will look something like this, according to architect John Allen's sketch, when it's completed in about a year. Dr. Edwin Blumberg and Mr. and Mrs. Kenneth Maas are partners of the 80-bed, \$450,000 project, which will provide first-class

nursing care exceeded in intensity only by a hospital. Approved by city officials two years ago, the project was delayed because of the tight money market, but Bank of the Commonwealth recently agreed to finance it, and ground was broken just a week ago.

## Kendallwood Comments

By STEFANIE KUESTER

Sometime back, Helen Streng of Craftsburg, K-3, planned a surprise party where sixty guests were invited to commemorate Bill's birthday of sixty years. Film strips and slides were shown by guests who toured such "never-never lands" as Finland, Sweden, Norway, Lucerne, Paris, Budapest as well as picturesque Hawaii.

To lend some gaiety to the party a chorus line was formed which included Hula Wahini Marge Mallen, The Roaring Twenties were Charlene "Chi Chi" Heuer, Rosita "Chiquita" Acosta, Mili "Bunny" Bragan, Maria "The Doll" Wyatt, Joyce "Joy Joy" Little, and Norma "No No" McCaig. Helen put on a beautiful spread of goodies and champagne popped everywhere.

The out of town guests were Barb and Jack Kane of Toronto, Canada, and Emil and Fred Bach of Akron, Michigan.

Your "Ever-lovin' heart" Marion Robinson of Atlanta, Ga. formerly of Baintree, K-3, sent in a song tape to the tune of "Mame" changing the words to fit this grand occasion.

Somewhere between last summer and fall, Marge Mallen and I formed a bridge club for the purpose of teaching bridge to non-bridge players. It turned out to be a rip-roaring success. The charter members are Shirley Robertson, Lois Witt, Ann Oppenheimer, Agnes Vagabond, Francie Uley, Skeeter Croity, Judy Brown, Helen Watson, Wilda Pierce, Marge Mallen and the scribe.

We haven't decided upon a name for the club but one of the husbands of this group came up with "Baintree Bridge Bags." How about it girls? This club will hold its first bridge luncheon at the Red Fox on April 26 at 11:30 a.m.

President Cathy Howland of the Palette Guild wishes to announce that the guild will present its 1967 annual outdoor exhibition and sale at the Botsford Inn Gardens, Sunday, May 21 from 12 noon to 6 p.m. The public is invited and there also will be no admission charge. Refreshments will be served.

Cathy would also like to remind her members the Palette Guild luncheon will be held at Devon Gables on May 16 at 12:30 p.m. Mark this date on your calendar.

Another reminder that there will be Kenbrook PTA Pancake Brunch to be held in Kenbrook School, Kendallwood 3 Sub. Sunday, April 16 at 11 a.m. to 1 p.m. Proceeds will be used to get more gym equipment and help keep the Kenbrook School library open all summer. The library will be open to all the children in and around the subdivision. Your cooperation is desired. For tickets call Skeeter Croity on 474-8284.

Remember to call me at the above number if you have news you wish known.

## Commonwealth Profits Up

Bank of the Commonwealth, which has two Farmington branches, has announced substantially increased consolidated net operating earnings for the three month period ending March 31.

First quarter profits were \$1,027,833, compared to \$782,548 in the same period of 1966.

Earnings were \$1.14 per share in 1967, compared to 87 cents a share in the first three months of 1966, a 31 per cent increase. It was reported by Donald H. Parsons, chairman, and George W. Miller, president.

Deposits grew from \$543 million March 31, 1966 to \$829 million on March 31, 1967.

## BeechviewPTA To Show Art

A student art exhibit and the installation of officers for 1967-68 will be featured at the April 17 meeting of the Beechview PTA. This will be the final assembly of the 1966-67 academic year. During the business meeting beginning at 8 p.m., the retiring officers will turn over the reins to the new officers.

Richard Angelo is the new president; David Stader, father vice-president; Mrs. Pat Pierson, mother vice-president; Carol Glessner, teacher vice-president; Mrs. Avonelle Slagle, recording secretary; Mrs. Dee Horst, corresponding secretary; and Richard Leonard, treasurer. The installation will be conducted by Aldo Vagnoni, the first president of the PTA at Beechview.

The student art exhibit will be open following the business meeting. This display of art work by the students of all

grades will be coordinated by Gilbert Maxwell, Beechview art consultant, in collaboration with the classroom teachers and should provide all parents with a picture of the creative art being produced by the current generation of elementary school students. Refreshments will be available during the Exhibit.

Prints and drawings recently acquired for the permanent collection of the Detroit Institute of Arts make up the museum's main building — downstairs gallery.

Two pen and ink studies by Guercino (1591-1666), Francois Boucher's red chalk of a seated man, works by Perino del Vaga and Battista Naldini are among the earliest items in this show.

## Meeting Held To Plan Club For Large Families

Ten families from Farmington met recently in the basement meeting room of Our Lady of Sorrows Church to help Mr. and Mrs. Richard Abowd, of 12 Mile Road, in the formation of a club for parents of large families in the Farmington, Livonia and Southfield area. These "charter" families, representing 74 children, will be present on Tuesday evening, April 18 at 8:30 p.m. at Our Lady of Sorrows church basement (Powers Road and Shiuwassee, Farmington), when Abowd, temporary chairman, conducts an organizational meeting for parents of five or more children.

The club's purpose is threefold: educational, social and economic. At least 25 "charter" families are needed to make the group effective. The club is open to parents of five or more children... regardless of race or religion. It is a non-political and non-profit organization. Its only aim is in helping to raise quality citizens from large families.

In addition to helping solve mutual problems, the club will have some social activities. Its most important objective will be the formation of a cooperative for the purchase of quality merchandise at wholesale prices.

All parents of five or more children in the Livonia, Southfield or Farmington area are welcome. (The church basement is entered from the rear parking lot.)

## Madonna College Slates Art Show

An exhibit of the accomplishments of Madonna College art students is slated for April 16 to 23. To be shown is the work of the regular college art students in conjunction with the adult education classes in painting. Various media and techniques will be represented; among these are: oils, both traditional and modern, watercolor, drawing, design, lettering, crafts, wood and stone sculpture.

The exhibit, an annual affair at the college located on Schoolcraft and Levan Roads in Livonia, will open with a reception on Sunday, April 16, from 2-4 p.m.

**Eagle PTA Slates Summer Camp Film**

The special education department and PTA at Eagle School will conduct a program on April 17 at 7:30 p.m. at the school. The school is located at 2910 W. 14 Mile Rd. at Middlebelt.

The program will feature information on summer camp for the handicapped. It will include films and a discussion about Grace Bentley Camp and the Muscular Dystrophy Camp. All interested persons are invited to attend.

## FARMINGTON Board of Commerce

23715 Farmington Road - 474-3440

## — FACT FINDER —

IN THE PAST FEW WEEKS we have attempted to answer a few of the questions relative to the activities of the Board of Commerce; asking ourselves the questions.

**NOW IT IS YOUR TURN.**

We encourage you to submit your questions about the B. of C. so that we might make the entire community familiar with our organization and its activities.

## FEED YOUR LAWN the BEST FOR LESS!

The formula golf courses use for that green color, rich texture! G & F LAWN FOOD gives that "greens and fairways" look to the home lawn. Feed your lawn the best... G & F... this weekend!



Feeds 5,000 square feet for just \$3.75  
... or 10,000 square feet for just \$6.75

**RA-MIL NURSERY SALES**  
30720 Orchard Lake Rd. Farmington

## This Book Has Helped...



**Concerning Social Security**

Many families have found McGraw-Hill's "Guide for the Family," a clear, up-to-date explanation of survivor benefits under Social Security. Facts concerning arrangements are presented accurately, forthrightly. Booklet available free.



A "Guide for the Family" May Have the Answers You Seek...

P. O. Box 4943  
Riverton Station  
Detroit 19, Mich.

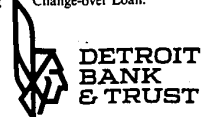
Please send me in a plain envelope  
a copy of your free booklet, "A Guide for the Family."

Name \_\_\_\_\_  
Address \_\_\_\_\_  
City \_\_\_\_\_ Zone \_\_\_\_\_  
Booklet Will Be Mailed in Plain Envelope

## marks the spot

## where your Family Banking Center can help you with a Spring Change-over Loan

Change the car, change the house, change the scene. If you're ready to trade cars, we can help with an auto loan the minute you find the car, or even before you start looking. If you're ready to make some changes in the house—bigger kitchen, second bath, new garage—we can help you with a home improvement loan right now. (No money down, up to five years to pay.) If you're ready for a change of scene, we can help you with a loan to buy a boat and the motor to move it and the trailer to move it on. Or we can help you with a vacation loan to take you anywhere. Just look for the Indian... he'll show you the best place to get a Spring Change-over Loan.



Family Banking Centers at 12 Mile-Orchard Lake Road • Grand River-Middlebelt

