

# MERRY CHRISTMAS



Audited Circulation  
12,242  
As of June 30, 1967

## The Farmington ENTERPRISE & OBSERVER

15,500  
Press Run  
10c Per Copy

Vol. 80, No. 26

Sunday, December 24, 1967

20 pages this issue

Philip H. Power, Publisher

### Youth Keeps Hoping

It's been two weeks, but a six year cerebral palsy victim hasn't lost his faith that his dog will return.

Kurt Zimmie remains convinced that the German shepherd, Red, will return in time to make his Christmas happier.

IT WAS Saturday, Dec. 9, that Red wandered off--or was taken--from the family home at 2281 Elm Grove, Farmington Township.

Kurt's mother, Mrs. Carl Zimmie, reports that since The Enterprise & Observer helped issue the boy's plea for his dog the family has received many phone calls.

"We were offered another German shepherd and a poodle along with many other dogs," she said, "but have refused all the offers because Kurt still believes that Red will return and he wants his own dog."

Mrs. Zimmie says that neither the county sheriff's department nor any of the police forces have been able to locate the dog.

She added that the family had contacted all the area veterinarians in hopes of finding Red.

THERE'S a special affection between Kurt and the dog because added to the normal attachment of a boy and his dog, Red saved Kurt's life two summers ago when he knocked the boy out of the path of an automobile.

Because of this action the Redbone hound paid the price of a broken pelvis and insertion of a pin in his left hind leg which has left him with a permanent limp.

The dog is described as standing between 24 and 26 inches in height and weighs about 65 pounds. He has short hair colored between the shades of auburn and brown and wears a tan collar.

KURT, a kindergarten in the Eagle Orthopedic School, has been hospitalized time and again since birth because of the cerebral palsy affliction accompanied by asthmatic attacks.

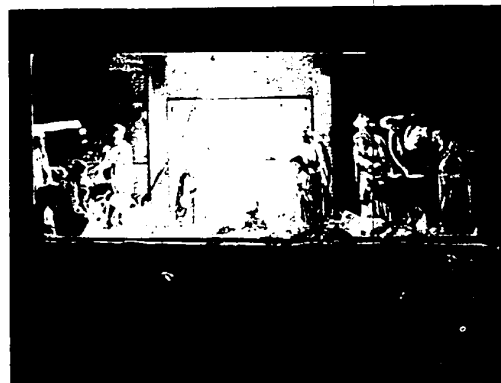
Just recently the six year old was forced to undergo the painful series of rabies shots when a neighboring dog bit him on the face, neck and chest. Anyone having any information about "Red" is asked to call the Zimmie home at 474-1065.

### Goodfellows Near Goal

Farmington Goodfellows are now confident that they will exceed their announced goal of \$4,500 in donations for Christmas.

Mallings to local industries and businesses were completed a week ago and checks are already beginning to come in. Transfers Local 614 at Tri-County Automation, Inc., raised \$160 among its members which was matched by the company, making a total of \$320.

Richard Korte, the chief steward, said, "We just wanted to do it."



THE FIRST CHRISTMAS--The manger scene at Our Lady of Sorrows Catholic Church reminds all of the event Farmington celebrates this weekend. The manger is located at the corner of Shiawassee and Powers Rds. Similar creches are located in the area churches and in many private homes.

### City Ups Don't Drink And Traffic Drive - Police Fines

Violators of traffic offenses in the City of Farmington will be required to pay increased fines when caught.

At its Dec. 18 session, the city council approved an ordinance establishing a violation bureau in the city and establishing a new rate schedule for payment of fines.

The ordinance was given immediate effect.

MUNICIPAL Judges Michael J. Hand and Dennis J. Pheneby compiled the new fine schedule. It was the first revision of the fines in 12 years.

Under the new schedule, the fines are in the most part higher. There are some reductions. Failure of the right to yield to a police car or fire engine has been reduced from \$75 to \$15.

If you are caught riding a horse on the sidewalk it will also cost less as the fine has been reduced to \$5 from the existing \$10 levy.

SERIOUS offenses such as driving under the influence of liquor; reckless or careless driving; and speeding at more than 25 miles per hour over the limit continue to remain as mandatory dates with the judge in court.

If you are speeding at up to 10 mph over the limit the fine is \$10. If you are caught going between 10-15 mph faster than the law allows the fine is \$20. Speeding of up to 20 mph over the limit will cost \$30, while between the 20 to 25 mph over the limit category costs \$40.

In most cases the fines that were posted at \$5 have been raised to \$10 and those previously set at \$2 or \$3 are now \$5.

Some of the fines were unchanged. It will still cost you \$10 to illegally chase a fire engine; \$5 if you are towing another vehicle improperly; and \$5 if your car is towed away from a no parking zone.

### INDEX

- Christmas Services... 2A
- Community Calendar... 2A
- Suburban Puz On Its Holiday Best... 1B
- Pair of Individuals In Justice Court... 3A
- Sports... 4B, 8C
- Went Ads... Section C

### Hamlin And Hall Approve Choice Of Airport Site

Both of the Farmington community's representatives to the Oakland County Board of Supervisors, Delos Hamlin and Curtis Hall, sided with the majority Tuesday when a site in Orion Township was chosen for the county's second major airport.

Over formal protests from both the Orion Township Board and the Lake Orion Board of Education, the county board approved airport development for a location five and a half miles north of downtown Pontiac.

The site is at the intersection of I-75 and M-24. The landing field there at present totals 440 acres.

AN ADDITIONAL 1,400 acres is needed by the county. The supervisors, on a roll call vote in face of protests that the money could be better spent on improving roads, transferred \$284,336 from the general fund to exercise purchase options.

With the imminent closing of Berz Airport on Maple Rd. in Troy, the county will be left with the present airport west of Pontiac as its principal facility for aircraft--and professional surveys show its facilities to be far short of anticipated future traffic demands.

Technically, the supervisors only approved adoption of a new airport master plan as recommended by consulting engineers.

In practicality, however, identification of the specific site and the spending of more than a quarter-million dollars for land acquisition carried the board to the point of no return.

THE AIRPORT will be developed one phase at a time, with needed funds to be appropriated as the need arises. Such needs would have to be weighed against other county urgencies at the time of consideration, and full implementation of the plan was reported to be at least 10 years distant.

### HE'S IN BUSINESS ON YOUR STREET



Your neighborhood boy is gaining valuable business training through his Observer route. The 40¢ you pay him each month for our new Carrier Subscription Plan assures his success in his first business venture. Be sure to ask for a receipt, which will guarantee delivery of The Farmington Enterprise & Observer.

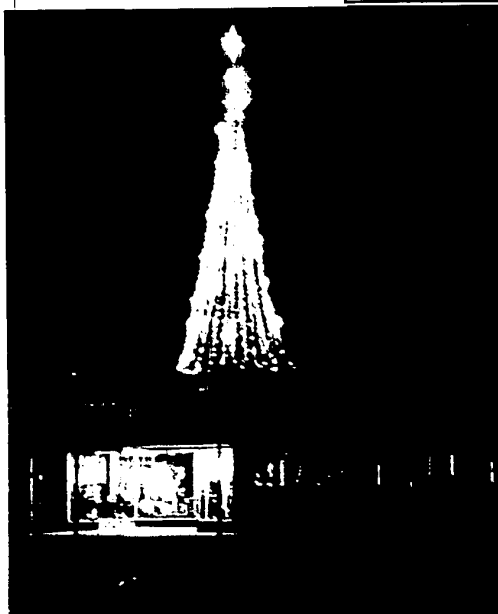
### Dr. Clark Out Of Jail

Dr. Ronald E. Clark, Farmington physician charged with manslaughter in the Nov. 3 death of his part-time nurse, was released on bond Friday from Oakland County Jail.

His bond, previously set at \$50,000 had been reduced Monday to \$15,000 by order of Circuit Judge W.J. Beer.

The full \$15,000 was presented to the court in a certified check by Mrs. Clark. It will be forfeited if he fails to appear for his trial.

Ironically, Dr. Clark had earlier signed an affidavit that he had no funds, and he is represented by a court-appointed attorney.



AGLOW--The huge Christmas tree on top of Farmington Plaza can be seen from many blocks away. The lights add to Farmington's festive decorations during the holiday nights.