

# *very sincerely yours...*

**all 1,300,000 square feet.**

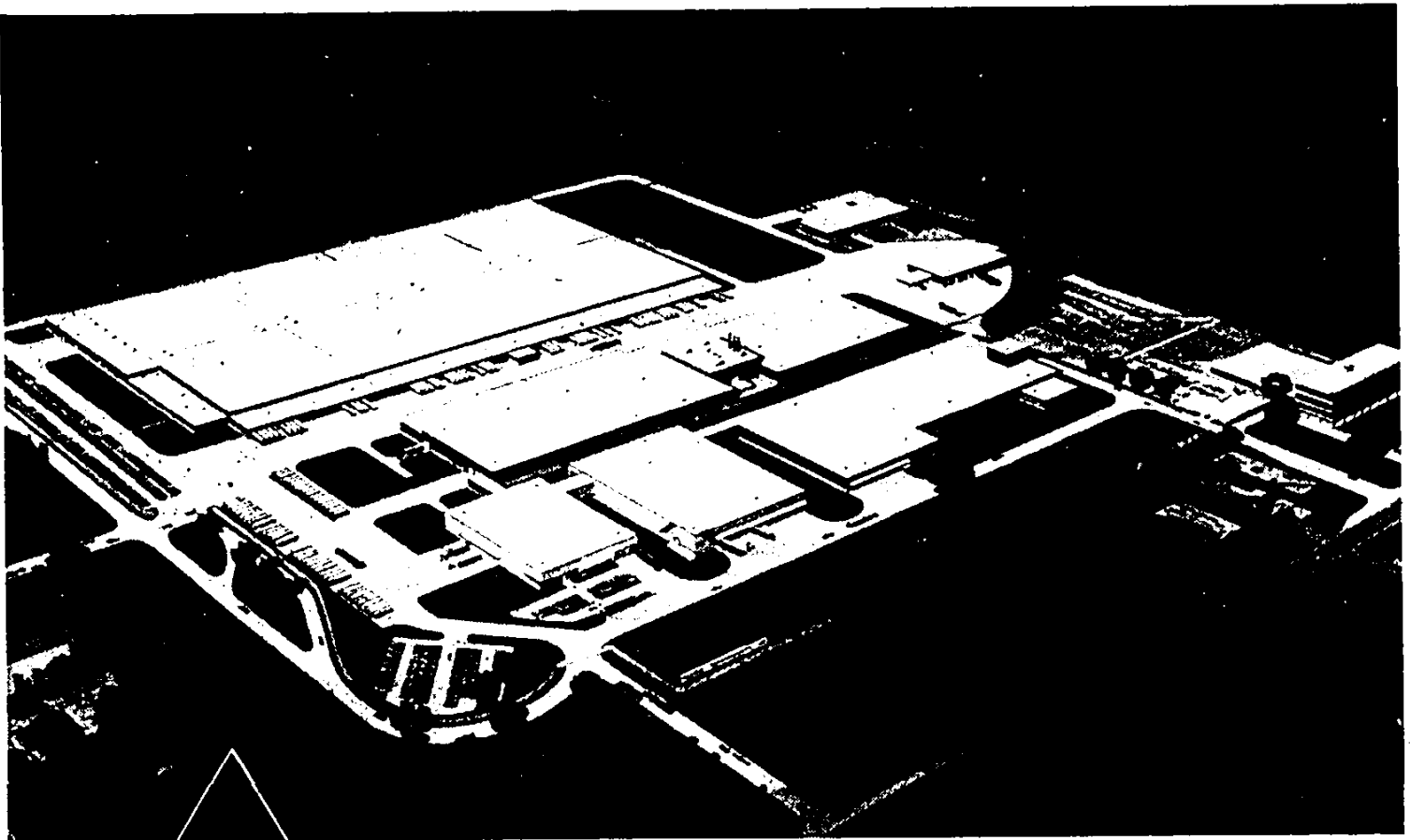
A perfectly planned distribution and processing center  
for economical food distribution.

This giant complex will consolidate all food handling facilities into a single unit and has been designed to move over a million tons of food annually. Accommodating Allied's rapid growth and projected expansion—a \$635 million sales goal within the four-state area of Michigan, Ohio, Indiana and Illinois by 1972. It will include processing of foods previously purchased from outside sources, and, will create over 2,000 jobs in the Livonia area.

And, who will lease and operate this miracle of efficiency?



**Very Sincerely Yours,  
Allied Supermarkets Inc.**  
we're happy we're moving to Livonia.



## **ALLIED SUPERMARKETS INC.**

serving the retail food industry through:

- Abner A. Wolf Wholesale Grocery Company • Packer Foods
- Wrigley Foods • K-Mart Foods