

Health Club Plans Wig Demonstration

A wig demonstration will be presented to the Women's Health Organization of Farmington at 8:15 p.m. Thursday, Feb. 22, in the cafeteria at Farmington High School.

Beautiful Custom Drapes ...

don't have to cost a fortune!

Call us, 281-6228 and find out before you buy!

Free day or evening, no obligation shop-at-home service

Dennis Drapery

29236 FORD ROAD - RESIDENTIAL & COMMERCIAL
Just East of Middlebelt

Delta Zetas Meet In Livonia

Delta Zeta sorority alumnae in the Plymouth, Livonia and Wayne areas will meet at 8 p.m. Thursday, Feb. 22, for a card party at the home of Mrs. Donald A. Massey, 36719 Angeline Circle, Livonia. Alumnae interested in attending may call Mrs. Massey at 281-0384. Mrs. Douglas Meyers, of Wayne, chairman, said the sorority will celebrate Founders' Day Saturday, March 30, in the Grosse Pointe War Memorial.



Women On The Go Jane Moehle Sees Total College Scene

A lady who has viewed this educational scene from just about every angle imaginable thinks that college students have a lot to offer college administrators in the matter of giving a fresh viewpoint.

And Mrs. John Moehle, student, ex-counselor, and college board members—also hopes that youths who are completely honest with themselves join in campus protest intellectually, fully aware of the whole picture and willing to accept their responsibilities.

"By and large," says Jane Moehle of Plymouth, "college students today are a serious bunch, and they're subject to a lot of pressures that just weren't there for students of earlier generations."



JANE MOEHLE to school as a full time student.

IN HER OWN experience, Mrs. Moehle has plenty of knowledge on what makes the college student tick.

There were her own college days, at the University of Cincinnati. Later, there were teaching and counseling positions, one at a school of nursing where she was the only nurse on the staff.

"I found that interesting," she said, "that I seriously considered getting further training that would include some medical background."

Instead, though, she went to the University of Illinois as an assistant dean of women for five years, and left there to marry Jack Moehle, a financial analysis man for the Ford Motor Co.

AFTER A TIME in Redford Township and a few years outside of Michigan, the family settled in Plymouth, and Jane was in on the original citizens' committee that made plans for Schoolcraft Community College. She now serves on its board of trustees.

And in the last year or so, with six-foot son Bill now 13 and a busy junior high student and daughter Mary Elizabeth at the advanced age of 11, Jane Moehle has returned

to school as a full time student. She is working at Wayne State University toward her Ph. D. in college administration with an eye on an eventual position in community college work.

HER CURRENT PROJECT, with most of the classroom work completed and the doctor's thesis still ahead, is learning German, to meet the requirement of proficiency in two languages.

"And I find it just plain hard work," she said. "For the first time in my life, I'm experiencing academic difficulty, and I know it will make me a lot more sympathetic with students who are under tension to improve their grades."

JANE IS ANXIOUS to get the German study behind her and move on to the fascinating thesis she has in mind.

She would like to take some of the research that has been done in industry, to see what happens to a person's behavior when he feels himself in an unjust situation, and apply it to the field of education.

"The results of the research in industry are incomplete but already rather surprising," she said, "and I am anxious to see how it might apply to teachers

at all levels. The findings should have interesting implications, for instance in the field of teachers' labor unions."

UNIVERSITY LIFE, of course, has changed drastically since Jane's student and counseling days, and she finds student movements and campus policies now a whole new world.

Removal of late night restrictions for coeds, for example, seems to be the result of completely different attitudes on the part of both students and administrators, she believes.

"I don't remember feeling particularly restricted when I was a student and had to be in early," Mrs. Moehle said, "but I understand that students now do feel that way."

SHE FIGURES they must learn before they reach the university campus that more freedom means more responsibility, and that they must accept the consequences of their behavior.

"Students have the responsibility to be scholars," Jane added, "and that means they must know they can't ruin their health with late hours and alcohol and drugs."

"The responsibility for keeping good health, practicing intelligent behavior and accepting moral consequences has to be instilled in the family and carried on by the student himself."

Jane has set herself a target date of January, 1969, for completion of her degree work. After that, plans are indefinite.

But there's no question that colleges and students will remain a big part of her life. Which can't be anything but good for all concerned.

Washington's Birthday

CARPET CLEARANCE!

WE HAVE A SELECTION OF CARPETS THAT ARE PRICED TO SELL. TAKE ADVANTAGE OF THIS CLEARANCE OFFER.

KODEL®

The finest of Polyester fibers! Deep, durable pile. Warm colors. Long life. Virtually stain resistant.

GREEN EMBOSSED . . . REG. 3.98 . . . NOW 5.98
BLUE . . . REG. 3.96 . . . NOW 5.98
GOLD . . . REG. 8.98 . . . NOW 5.98

JUST A PARTIAL LISTING

DU PONT 501 NYLON®

Long wearing, excitingly beautiful DuPont Nylon carpet you'll want for the entire house. New decorator colors.

GOLD . . . REG. 6.98 . . . NOW 4.98
GREEN . . . REG. 6.98 . . . NOW 4.98

ONLY A PARTIAL LISTING

FORTREL®

This fine quality Polyester Fiber adds an enchanting air to every room in your house. Highly stain resistant. Acrylic pile is deep and durable. A wide selection of rich, warm colors.

ANTIQUE GOLD . . . REG. 6.98 . . . NOW 4.98
GREEN VELVET ACRYLIC REG. 6.98 . . . NOW 4.98
BLUE . . . REG. 8.98 . . . NOW 5.98

ONLY A FEW OF MANY COLORS

Kodel: T.M. of Eastman-Kodak Co. Fortrel: T.M. of Fiber Indus., Inc. DuPont Nylon: T.M. for nylon fiber.

RITE Carpet Co.

7 MILE AND MIDDLEBELT - ACROSS FROM LIVONIA MALL
STORE HOURS: 9 to 5 Daily; 9 to 6 Tuesday and Wednesday

For "Where to Buy and Save" READ THE OBSERVER TODAY!

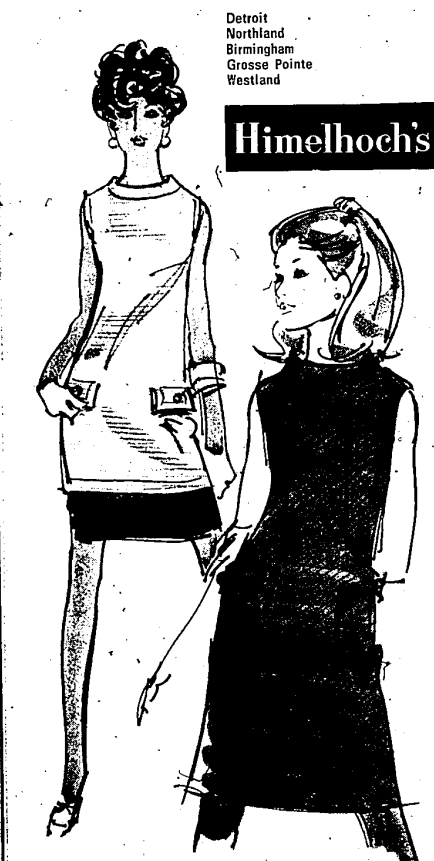


SALE 319

WORTHWHILE SAVINGS ON FINE PURSE ACCESSORIES

French purses, billfolds, clutches, even some purse secretaries included in the group. Fine assortment from a famous maker, in smooth and grained leathers, novelty fabrics. Every color you could wish for! All great values, formerly \$5 to \$9.

Detroit Northland Birmingham Grosse Pointe Westland



Detroit
Northland
Birmingham
Grosse Pointe
Westland

Himelhoch's

DACRON KNIT-KNACK FOR JUNIORS

By Hoot Owl. The weave that's with it...ribbed Dacron® polyester knits are drip-dry marvels that keep their crisp good looks. Tunic style is beige over brown, navy over white. Side-belted shift is in navy, beige or yellow. For junior petites 5-13.

\$26

YW Scene For Continuum Series

The Continuum Center of Oakland University, which has brought counseling to more than a thousand Michigan women, will conduct a 12-session program for women in this area at the Northwest YWCA, 25940 Grand River, beginning March 4.

The center, in operation for three years, is designed to help women whose children have reached school age find their best spot in the world beyond the kitchen and washing machine.

An orientation meeting to familiarize women with the program will be held from 1 to 4 p.m. Monday, March 4.

Lyndon Meadows Sub Plans Dance

Lyndon Meadows Civic Association members will gather at the Danish Hall and Club of Detroit, 22711 Grand River, on Feb. 24 for their annual club dance.

Highlight of the evening will be a smorgasbord dinner. Tickets for the event may be obtained from block captains, according to Mrs. Pat Childs, association president. Guests are welcome.

militarize women with the program will be held from 1 to 4 p.m. Monday, March 4.

MRS. PRISCILLA JACKSON, director of the Continuum Center, said the program is designed to explore each participant's unique situation and her potential for activities outside of the home—usually in the areas of education, volunteer service, or employment.

Each woman is given an extensive series of tests, administered by staff psychologist Dr. Gerald Self, who will speak at the orientation meeting on "Psychological Testing: Its Use and Mis-Use."

Allowance is made for the relative rustiness of housewives, many of whom have not been challenged for some years.

FOLLOWING SESSIONS include discussion on "The Eight Stages of Women" and "Opportunities in Education, Volunteer Service, and Employment."

A counseling call-back interview is conducted six months after the last session to chart each participant's progress.

Permanents including our 5.50 Cut and Styling SALE PRICED!

8⁷⁵ 10¹²⁵⁰

At Artists, when you get our 5.50 cut and styling, it costs as little as 3.25 more for a permanent. So why not get the whole works and make your coiffure more lasting.

SPECIAL! Mon., Tues., Wed. Cut and Set . . . 4.50

February Sale 15% OFF on ALL hair goods

Wigs (and falls) from \$56, now \$47.60 and up; wiglets from \$15, now \$14.75 and up. Wigs include styling and styling. Fine, human hair.

Artiste hairstylists

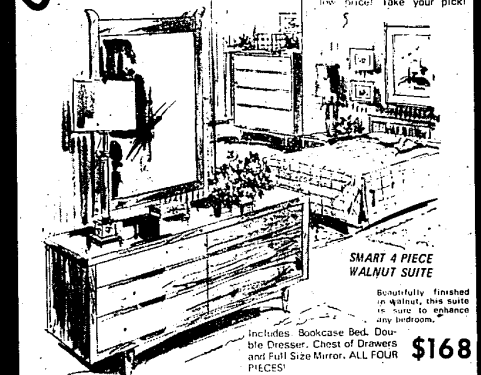
WOMENLAND 27-1380 WESTLAND 435-9111 LIVONIA MALL 24-4600 NORTHLAND 24-0000
Appointments Not Always Necessary — Open Evenings

OPEN PARK SUNDAY 12 to 6!

SALE! 4 Pc. Groups!

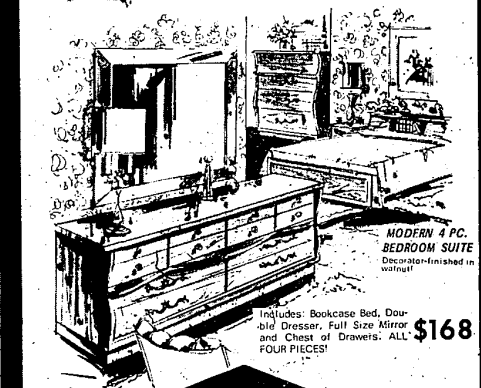
Your Choice! \$168

Our decorators have carefully selected these outstanding suites to sell at a new low. We "must" take your pick!



SMART 4 PIECE WALNUT SUITE

Includes: Bookcase Bed, Double Dresser, Chest of Drawers and Full Size Mirror. ALL FOUR PIECES! \$168



MODERN 4 PC. BEDROOM SUITE

Includes: Bookcase Bed, Double Dresser, Full Size Mirror and Chest of Drawers. ALL FOUR PIECES! \$168

Open Daily 9 to 9 SUNDAY 12 to 6!

PARK FURNITURE CO.

NO MONEY DOWN YEARS TO PAY!

29055 PLYMOUTH RD. of Middlebelt KE. 8-4433