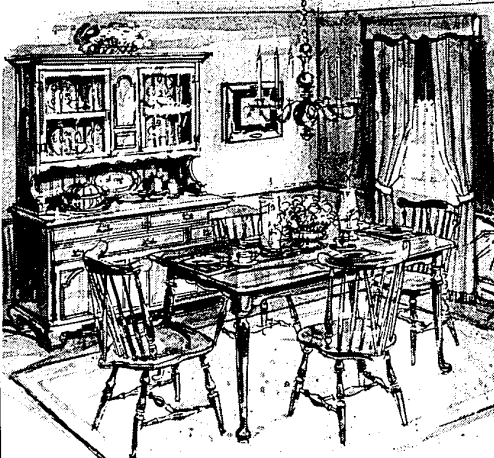


House of Maple

32098 Plymouth Road 421-0700
Open Monday - Saturday 9:30 a.m. to 9 p.m.



Semi/Annual Sale



SPECIAL SAVINGS ON
KLING COLONIAL DINING ROOM



Enjoy the cordial hospitality of this handsome solid maple dining group...and SAVE too! You'll cherish the fine detailing, craftsmanship and superb quality of these handsomely styled pieces, hand-rubbed to a rich Buckwheat brown finish. And there are more sale values from our Kling Colonial Galleries for every room in the house...so visit our store soon!

56" x 18" Spinnaker Extension Table, extends to 66" with two 15" leaves (seats 8-10) and four Dashmore Side Chairs.
Reg. \$284.50 SALE \$249.50
14" Butler and China Top.
Reg. \$384.00 SALE \$329.50

42" Round Extension Table, extends to 52" with one 10" leaf (seats 6), and four Comb Back Mule's Chairs.
Reg. \$212.50 SALE \$179.50
Both Tables also available with woodgrain Formica Tops.



LIVONIAN Keith Crawford, owner of Crawford Trailers Inc., who resides at 19973 Sunbury, is the chairman of the first annual Detroit Camper and Trailer Travel show opening Saturday and continuing through Sunday, March 3 in the Detroit Artillery Armory on W. Eight Mile Road. Crawford has served as travel trailer division chairman of the Michigan Mobile Home Association and a director of the Association.

Plymouth Man Promoted By Chrysler Corp.

Sidney W. Salsburg, of Southfield, and John T. Kenney, of 14753 Dogwood Court, Plymouth, have been named to new positions in Chrysler Corporation's personnel office.

Salsburg was appointed manager-personnel research and planning, and Kenney was named manager-benefit programs and wage administration.

Kenney will be responsible for administering group insurance and medical benefit plans. In addition, he will direct the unemployment benefit plans, pensions, savings and wage administration activities.

Kenney joined Chrysler in 1953 as a labor negotiator in the corporate labor relations department. He has served as supervisor - negotiations and appeals and, since June, 1966, as manager - hourly labor relations in the corporate personnel office.

OPEN SUNDAY 10-4 TUES., WED. 9-7 MON. THURS. FRI. SAT. 9-9

THERE MUST BE A REASON WHY

MURRAY'S

HAS THE BEST PAINT VALUES*

LOW PRICES! CHOOSE FROM HUNDREDS AND HUNDREDS OF COLORS!

NATIONALLY ADVERTISED BRANDS. COURTEOUS AND EXPERT SALESPEOPLE.

NEW 1968 COLORS! DUPONT LUCITE DRIPLESS LATEX \$4.99 GAL. 4 DAYS ONLY!

NOW IN STOCK! NEW 1968 COLORS SUPER KEM-TONE KEM-GLO VELVET FLAT ENAMEL

ODDS AND ENDS SALE OF DISCONTINUED COLORS. KEM-GLO - LOWE BROS. KEM-TONE ONLY \$2. GALLON 75¢ QUART VALUES UP TO \$7. GAL. WHILE THEY LAST!

9 INCH COMPLETE ROLLER OUTFIT CONSISTS OF 9" PAN ROLLER AND HANDLE 99¢

MURRAY'S DISCOUNT AUTOMOTIVE BUYS!

NEW! AMERICAN MADE AC SPARK PLUGS 49¢ EA. 4 DAYS ONLY!

OIL FILTERS FROM 99¢

MOTOR OILS PERMALUBE PENNZOIL QUAKER STATE WOLFS HEAD 39¢ QT.

AUTO TUNE-UP KITS AS LOW AS \$1.77 Rotor - Cond.

ALL SOAP \$8.88 50 LB. BAG FOR THE KIDDIES! SPIROGRAPH DRAW A MILLION MARVELOUS PATTERNS \$2.19

6-TRANSISTOR RADIO EARPHONE CASE AND BATTERY INC. \$2.99

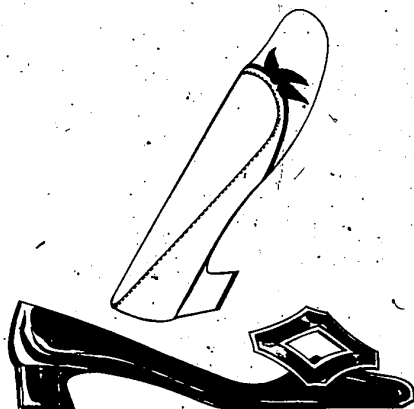
26717 PLYMOUTH RD. OPP. MAYFLOWER BOWLING BET. BEECH AND INKSTER RD.

Shoes '68 Take Changes in Their Stride

Call on them to take you to Spring. These new shoes cause a stir wherever they go. Toes are rounder than ever. The heels, a little chip off the old block. And the colors? Shiny or pale; all to make your wardrobe spirits soar. Sizes are 6 to 10. Below: "Pin-Up" in black/white or brown/white patent. Above: "Spring Fever" in pink or alabaster kid; Shoes (dept. 40). All 5 stores.

\$16

VITALITY.



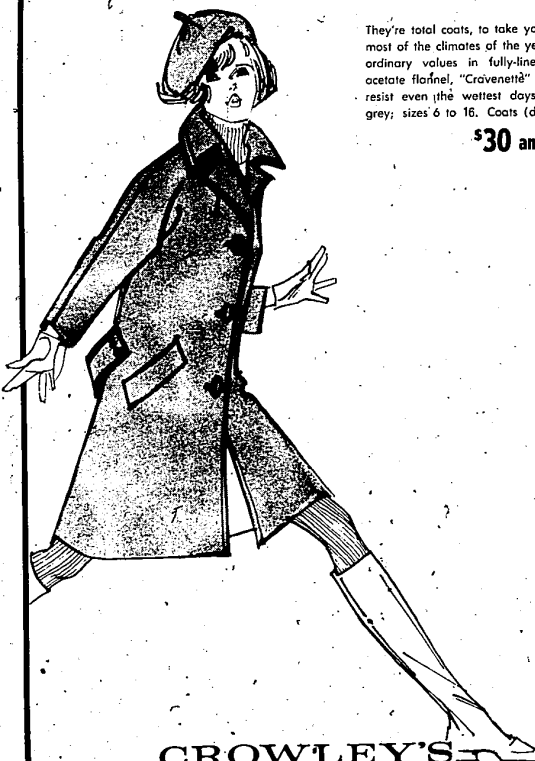
CROWLEY'S

LIVONIA MALL 7 Mile at Middlebelt, Phone 476-6300.

The Flannels Are Coming... Look for Them!

They're total coats, to take you through most of the climates of the year! Extraordinary values in fully-lined rayon/acetate flannel, "Cravenette" treated to resist even the wettest days. Medium grey; sizes 6 to 16. Coats (dept. 37).

\$30 and \$35



CROWLEY'S

Open Monday, Thursday, Friday, Saturday nights until 9.