

Computer To Study Earth's Heat

A more accurate method of calculating the earth's changing heat balance has been developed by a research engineer

NORTHVILLE LAUNDRY*
Laundry - Dry Cleaning
TRADITIONAL FULL SERVICE
FAMILY LAUNDRY
FOR OVER 40 YEARS

CALL
349-0750
FOR PICK UP & DELIVERY
331 N. Center - Northville

*Division Ritchie Bros. Launderers - Cleaners, Inc.

WOOLWORTH'S WONDERLAND CENTER
Plymouth Rd. at Middlebelt
MON., TUES., WED. - FEB. 26 - 27 - 28
PHOTO HOURS: 10 AM-12 1 PM-4:30 6 PM-8 PM



GET 13 PICTURES CHILD or ADULT
8x10 AND 12
WALLET SIZE 2 1/2x3 1/2
\$1.49 ONLY
Per Person Same pose Black & White

NO AGE LIMIT - BRING 'EM ALL ADULTS WELCOME - No Appointment Needed - Photos Are Taken Single Only - Several Finished Prints To Choose From - No Other Obligation.

AT WOOLWORTH'S YOUR MONEY'S WORTH MORE

BIG 2 1/2 CAR GARAGE
1 1/2 & 2 CAR MODELS ALL AT SALE PRICES
INCLUDING CEMENT & RAFTERS
\$999
ABOVE PRICES INCLUDE ALL OF THE FOLLOWING: 22' Steel & Vinyl Siding, 2' x 4' Aluminum Windows & 2' x 6' Sillings & Exteriors, 1/2" x 1/2" x 1/2" Steel Overhead Door, 6" x 6" Steel Corners & Electric Conduit & 225 Shingles, Double Headers
BUILT TO EXCEED CITY CODE
Garage Builders
WHILE OUR SHOWROOM
AT 12327 LAHAR RD.
KE. 8-7921

REMODELING SALE

WE ARE REMODELING AND ENLARGING OUR STORE TO SERVE YOU BETTER WITH FINE SELECTIONS OF QUALITY FURNITURE ATTRACTIVELY DISPLAYED. THIS MEANS WE MUST OFFER OUR PRESENT STOCK OF BEAUTIFUL FURNITURE AT FANTASTIC REDUCTIONS!

SAVE UP TO 60% TERMS OF COURSE

SHOP EARLY WHILE SELECTIONS ARE COMPLETE!

Verardi's
Fine Furniture and Upholstering Co.

34561 PLYMOUTH ROAD
1 Block West of Levan - Phone 427-8771

OPEN DAILY 10:00 A.M. - 6:00 P.M.
THURSDAY & FRIDAY 'TIL 9:00 P.M.

at the University of Michigan. Dr. S. Rolan D. Drayton, of the department of meteorology and oceanography, used an electronic digital computer to give more precise answers to the equations governing long-wave radiative transfer. Those answers will aid weather forecasters and atmospheric scientists.

Drayton's work, done as part of his doctoral degree, was supported by a three-year grant from the National Science Foundation.

"RADIATIVE TRANSFER" is the name for the interaction between solar radiation, which heats the earth and its atmosphere, and long-wave infrared radiation, given off by the earth and its atmosphere.

The close balance between this take-in and give-off energy keeps the earth's climate livable.

"Radiative balance can be modified by a variety of factors, including air pollution," Drayton explained.

"We're continually increasing the amount of carbon dioxide in the atmosphere by burning coal and oil. We're not positive yet what the long-term effects will be, but if the net result is to increase the surface temperature of the earth by as little as two degrees Fahrenheit, it might be enough eventually to melt large amounts of polar ice and cause flooding over low-lying areas of the earth."

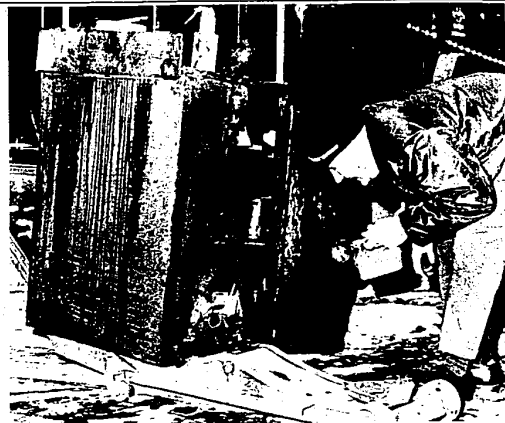
OTHER ENVIRONMENTAL factors—wind, clouds, and the topography of the earth—also affect radiative transfer, so "it is very difficult to understand atmospheric conditions and how the various processes interact," Drayton said.

Thus he has applied his calculations to the relatively un-complicated Martian atmosphere in an attempt to find out more about atmospheric conditions there on earth.

"There are no oceans on Mars, very few clouds, and virtually no water vapor and ozone in the atmosphere there," he explained.

Drayton's calculations will be used on a circulation model of the Martian atmosphere, a project being directed by Dr. Edward S. Epstein of the department of meteorology and oceanography.

Drayton is currently doing research, in conjunction with interpreting measurements from weather satellites, at the High Altitude Lab on U-M's North Campus.



PLAYING SAFE: — City of Plymouth Fire Chief George Schoenneman, is shown here looking for the "cause" of a "fire" at the Hassinger Chevrolet shops on Main Street. He couldn't find a blaze and there was very little damage—but he wasn't taking chances.

No College Sex Revolt, Says New Kinsey Report

"Contraceptives are not changing sexual behavior," a noted scientist says after a survey of 1,200 college students.

"They are simply making safer the sexual behavior that would have occurred anyway... People are going to behave sexually regardless of the availability and type of contraception."

The speaker was Dr. Paul Gebhard, director of the Institute for Sex Research at Indiana University—an office once headed by the late Dr. Alfred C. Kinsey.

DR. GEBHARD'S 1967 survey achieved similar results to the one Kinsey made 20 years ago. Dr. Gebhard reported in New York at a session of the American Association for the Advancement of Science.

Compared with a generation ago, Dr. Gebhard said, "it is clear that the enormous difference between how males and females view their initial partner has changed very little."

"In brief, females surrender their virginity to males they love, whereas males are much more emotionally involved."

For college coeds now at their first experience, "love was involved in 70 to 90 percent of cases"—similar to the earlier findings.

AMONG MALES, 11 to 14 percent in the new study said they first had relations with girls they intended to marry.

He concluded that "males today are much more than their fathers or grandfathers."

DR. AILON SHILOH, University of Pittsburgh anthropologist, described initial or pilot studies among women coming to Planned Parenthood Clinics of Pittsburgh.

One indication so far, he said, is that Catholic women express a more personally satisfactory sex relationship than do white Protestants, and Negro women articulate the least satisfactory personal relationship. After women began using some birth control technique, they reported a slightly increased frequency in sex relations per week, and a "greatly increased personal pleasure from sex relations as measured by her changed feelings about sex relations and her enjoyment of sex relations."

GENERAL CONCLUSIONS: —There has been "no sexual revolution" strictly speaking, rather more a continuation of long existing trends.

—College coeds continue to equal their first sexual relations with love, whereas men continue to be opportunistic.

—There is a definite trend, especially among young women, for the first sexual relations to be a pleasurable event.

—Newer contraceptive devices do NOT seem to have prompted any rise in the percentage of women having relations before marriage.

—Use of birth control devices doesn't seem to lead to increased sexual activity so much as to increased enjoyment.

Consumer Price Index
(1957-59 = 100)

Period	United States				Detroit	
	All Items	All Commodities	Food	All Services	All Items	Food
1960	103.1	101.7	101.4	106.6	101.3	100.1
1965	109.9	106.4	108.8	117.8	106.4	135.0
1966	113.1	109.2	114.2	123.3	111.1	112.2
1966 Nov.	114.6	110.2	114.8	124.7	112.7	113.1
1967 Mar.	115.0	110.0	114.2	126.3	114.3	113.2
Apr.	115.3	110.2	113.7	126.6	114.6	112.6
May	115.6	110.5	113.9	127.0	114.5	113.0
June	116.0	111.0	115.1	127.4	114.7	113.5
July	116.5	111.5	116.0	127.7	115.0	115.1
Aug.	116.9	111.9	116.6	128.2	115.3	116.3
Sept.	117.1	112.0	115.9	128.7	115.3	114.5
Oct.	117.5	112.4	115.7	129.1	115.5	114.7
Nov.	117.8	N. A.	115.6	N. A.	116.0	114.7

1. Excludes home purchase costs after 1963.
Source: U. S. Department of Labor, U. S. Data.

A New Hairdo + Team Mates
Slacks & Tops
from our Boutique Shop will put you in a light-hearted mood! Take advantage of our first-of-the-week permanent SPECIAL Mon. - Tues. - Wed. Reg. \$25. **\$15** Includes Haircut & Set

Coiffures de Roma
15369 Newburg Road
At Five Mile Road - Livonia
Phone 464-2270 for Appointment

Commission On Aging Asks Allowance Hike

The Michigan Commission on Aging urged the State Legislature to appropriate enough money to the Department of Social Services to raise the monthly food allowance for those on Old Age Assistance from \$30.10 to \$43.10 per month.

The recommendation was adopted at the Commission's February meeting in Lansing. The present allowance is based on 1957 food budget figures, and was last priced in 1961. The Commission described this budget as "totally inadequate".

The proposed increase would raise the daily food allowance from the present \$1 to \$14.3.

THIS FOOD BUDGET increase can be achieved now at minimal cost to the state because of a Social Security increase which goes into effect, March 2.

The Commission said that 52 per cent of those on Old Age Assistance (OAA) also receive Social Security, and much of the increased food budget would be supplied by this increase. State funds would only be needed for those OAA recipients who don't receive Social Security payments.

The Commissioners suggested that this increase may prevent many persons from becoming Medicaid patients, as a major reason for old persons becoming ill is faulty diet, resulting in poor health and hospitalization.

This hospital care costs taxpayers more than a proper food allowance in the first place.

Poster Campaign:
Can You Stop In Time?

Winter has a way of playing strange tricks on motorists and one of her favorites is to fool them into thinking they can stop on icy or snow-covered roads just as easily as they could on dry pavement. It can be a cruel joke.

That's why the Traffic Safety Association launched a traffic safety educational program this month with street-side posters asking motorists, "Can You Stop In Time?" The posters are designed to caution motorists against getting trapped into dangerous traffic situations where it's too late to get out safely.

Approximately 1,350 posters are erected on street-side standards in Detroit and another 1,350, bearing the same timely question and provided by local safety organizations, are posted throughout the state.

"IT TAKES MORE time and more distance to bring a car to a stop in the winter," said Garnet M. Griffin, managing director of the Traffic Safety Association.

"This means that drivers must be extra alert to the condition of the road and think ahead in order to avoid trouble. Quick stops, resulting from lack of attention or foolish acts usually lead to skids, loss of control and accidents."

Griffin pointed out that a sensible and safe driver will automatically reduce speed on slippery roads and leave extra space between his vehicle and the one ahead. He noted that the posted speed limits are applicable only under perfect conditions and drivers who insist on driving too fast for conditions or "tailgating" during the winter months are driving straight into trouble.

The Association advises drivers to slow down in winter, keep a safe following distance.



MEADOWBROOK LAKE created just for the joy of living

The skating is great at Meadowbrook Lake and another season to enjoy is here: one of four that make living in Meadowbrook Lake something special. Six model homes are open now in anticipation of our forthcoming Grand Opening, and are priced from only \$32,950. If you think you'd like living in a lakefront community where all four seasons are fun, come see this weekend.

DETROIT WATER DETROIT SEWERS Telephone 349-4340

THOMPSON-BROWN COMPANY
PROGRESS SINCE 1924
32823 West Twelve Mile Rd. • 476-8700

NIEMELA CONSTRUCTION COMPANY
GENERAL CONTRACTOR

COMMERCIAL RESIDENTIAL

Quality Built to your Requirements

KE 5-8010 GR 6-2864 Farmington