

# Schoolcraft Trustees OK \$3.7 Million Issue

Citing need for additional land and buildings to meet the rapidly expanding needs of the college and acting on recommendations of their bonding attorneys, Schoolcraft College Trustees have approved a \$3.7 million building and site bond issue.

Have you visited the glamorous  
**"Over 21"**  
Cocktail Lounge  
Restaurant  
On top of the Quo Vadis Theater  
Wayne Road at Warren

They stressed that a \$5.5 million issue would have to go to the vote of the five committees in the college district and would involve costs of an election, the risk of having an unfavorable vote, delays in getting approval of the Michigan

Finance Commission which could cost existing federal and state grants allocated on the basis of matching funds and the dangers involved in attempting a vote during a national election year.

Among items listed for consideration through funds secured by the sale of the bonds are:

Remodeling of the library at a cost of \$102,000.

Physical Education building, including equipment, \$660,000. This amount is needed in local funds to put the building under contract by June 30, 1968 to protect state grants under made (\$225,000 partial share, full share not to exceed \$1.178 million. The college already has \$1 million to be applied to the project from the 1966 bond issue).

Physical education outdoor areas \$112,500 with an anticipated state grant of \$112,500 for a total of \$225,000.

Maintenance building \$410,000 with an anticipated state grant of \$240,000 for a total cost of \$650,000.

Culinary Arts expansion, \$125,000 with an anticipated state grant of \$125,000 for a total of \$250,000.

Office and Administration space \$375,000 with an anticipated state grant of \$375,000 for a total of \$750,000.

Master Plan, Phase II, \$25,000 with an anticipated state grant of \$25,000 for a total of \$50,000.

Equipment for ongoing programs, \$250,000 from the new issue.

Instructional Building A, \$470,000 with an anticipated state grant of \$470,000 and an anticipated federal grant of \$50,000 for a total of \$1,440,000.

Instructional Building B, \$465,000 with an anticipated state grant of \$465,000 and an anticipated federal grant of \$500,000 for a total of \$1,430,000.

Instructional Building C, \$465,000 with an anticipated state grant of \$465,000 and an anticipated federal grant of \$500,000 for a total of \$1,430,000.

Land purchases, \$450,000 from the new issue.

The total costs of the project is estimated at \$7,585,000 with \$3,607,500 from the college district and the balance from anticipated or already allocated state and federal grants.

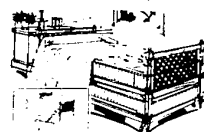
## DISCOVER SLEEP-2 FURNITURE

...That Leads a Double Life!

Here's a wonderful way to save on space... and save the budget too. These handsome designs open to sleep 2 in comfort, thanks to superb Springwell® mattress construction. Be sure to see our matching bolsters and slip covers in a wide range of decorative fabrics.

CHOICE OF 5 DESIGNS  
• MAPLE • WHITE  
• BLACK • WALNUT  
• MEDITERRANEAN

See the newest styles in Daybeds, Duette Beds, High Risers



Sleep-2 Daybed. Sleep in comfort on Springwell two equal-size 33" wide x 74" long mattresses. Large selection of colorful bolsters and slip covers. **ONLY \$16995**

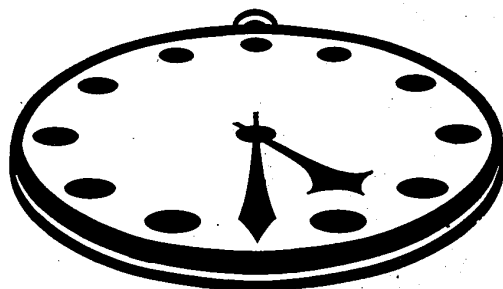


The ultimate in sleeping luxury. This Sleep-2 High-Riser is made with famous Springwell no-sag, quilted mattress construction. 33" or 39" sizes. **ONLY \$12995**

**Bunk & Trundle Bed Center**  
7210 MIDDLEBELT  
Corner Warren  
PHONE 425-7110

## Enjoy the added convenience of Saturday banking

(All offices open from 9:30 A.M. 'til 4:30 P.M.)



while you enjoy money saving services like:



- When a minimum monthly balance of \$300 is maintained.
- Make as many deposits as you want.
- Write as many checks as you want.
- NO service charges, NO maintenance fees.

Open Monday through Saturday until 4:30 p.m. ... 'til 6 p.m. Friday

# LIVONIA NATIONAL BANK

4 Offices to Serve You / Member Federal Deposit Insurance Corporation  
Five Mile Road near Farmington Road, Wonderland Shopping Center, Middlebelt and Seven Mile Road, Plymouth Road near Yale

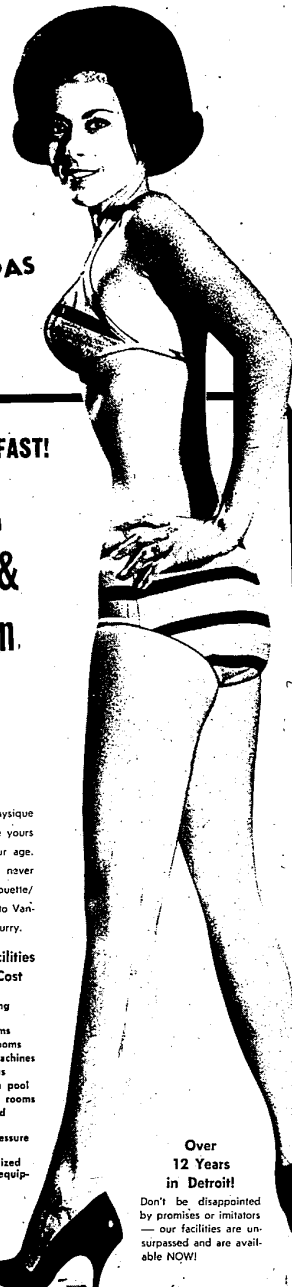
Ladies... Men,  
It Costs No More to Go V.I.P.

V.I.P.

Vanish  
Inches &  
Pounds

in the Finest  
Health Spa Facilities  
in the World!

Silhouette / American  
HEALTH SPAS



LADIES . . . MEN . . . REDUCE FAST!

**LOSE**  
**15** pounds &  
**15** inches in  
**15** Days!

for only \$175 per week

average on a course basis to beginners only who enroll now. Limited time only.



That slim, trim figure or physique you've always wanted can be yours — fast — regardless of your age. No diets and gimmicks that never really work but proven Silhouette / American scientific programs to Vanish Inches and Pounds in a hurry.

Unlimited Use of All Facilities  
at Absolutely No Extra Cost

- Patented electrical reducing machines
- Finnish Sauna steam rooms
- Arizona desert dry heat rooms
- Swiss facial contouring machines
- Hot whirlpool mineral spas
- Olympic-size heated swim pool
- Private ultra-violet sunray rooms
- Private dressing rooms and lockers
- Exclusive needlepoint pressure showers
- Over \$200,000 of specialized patented physical fitness equipment

We Dare Say: YOUR  
MEMBERSHIP FREE IF  
YOU CAN EQUAL OUR  
FACILITIES FOR LESS!

Over  
12 Years  
in Detroit!

Don't be disappointed  
by promises or imitations  
— our facilities are un-  
surpassed and are avail-  
able NOW!



Over \$200,000 of patented fitness apparatus give results quickly.

**FREE!**

Visit Our Fenkell at Southfield Spa

Exclusive new hot whirlpool mineral Spas — displace care and fatigue!

Call or drop in today for your free figure or physique analysis and free trial treatment. Actually go through an entire program including use of whirlpool, sauna and over \$200,000 of specialized equipment free.

Only 5 Minutes Away! Open Daily 10-10. Open 6 Days a week with separate facilities for ladies and men.

**Silhouette / American  
HEALTH SPAS**

17721 Fenkell  
at Southfield  
BR 3-8888

3606 Fort Street  
Lincoln Park Plaza  
DU 1-7581

2222 N. Woodward  
North of 12 Mile Road  
LI 8-1555

Your Membership is Honored at All Our 155 Spas Coast to Coast and Internationally

©Copyright 1968