

Gardening Pruning.. It's An Art That's Also Useful

By BETTY FRANKEL
Special Writer

Pruning is an important part of gardening. In Japan it is regarded as a fine art and much of the charm of Japanese gardens is due to the skillful pruning of trees and shrubs.

In our gardens pruning is generally done for a utilitarian purpose, but any pruning should be artfully done to make the plant a more attractive specimen.

Each tree and shrub has its own natural form. Pruning can improve the symmetry and control the size and appearance of the plant, but no attempt should be made to radically alter the natural size or form of the plant.

Young trees, shrubs and woody vines need pruning to encourage them to grow into their most desirable form. Trees, especially fruit trees, are often pruned to have an open center and evenly spaced branches that will develop into a well-shaped "crown".

Specimens to be grown flat against a wall need quite another kind of pruning so they stay rather two-dimensional and form a strong pattern.

Many shrubs can be pruned when they are young so that they develop a single trunk and are like small trees. This, too, is a rather special type of pruning.

SHRUBS are normally grown with many stems arising from the ground. As they get older they become crowded and often the older branches bear few flowers.

To rejuvenate the shrub, cut out old stems at ground level. A few old stems can be removed each year, allowing young branches to develop.

A more drastic treatment is to cut back all the stems at the same time.

Trees and shrubs that have grown too large for the space they are allotted can be "headed back", but this often results in a stiff, chopped-off look. It is better to prune shrubs by removing branches at ground level, and trees by cutting off entire branches.

ALTHOUGH PRUNING can be done at almost any time, it should be scheduled so as to minimize loss of bloom or fruit. This is a good time to prune, because the basic form of the plant can be seen.

Forsythia and other early blooming trees and shrubs should be pruned as soon as they have finished blooming, or, if they are pruned now, the branches that are removed can be forced into bloom in the house.

Later blooming shrubs that bloom on new growth can be pruned now without sacrificing any flowers. In general, plants grown for their display of berries or fruit should be pruned as little as possible.

PRUNING EQUIPMENT should include a good, sharp pruning shears and a saw. A curved pruning saw is convenient to use.

When removing a branch plan on making three cuts, make a small cut on the under side and then cut off the branch from above a few inches farther out than the first cut. This prevents tearing long strips of bark from the tree.

Finally, trim the stub close to the trunk. All cuts larger than a quarter dollar should be painted with tree wound paint. This is available in regular or spray cans.

Need accents that will beautify and bring vitality and distinction to the rooms of your home and make your family's everyday living more enjoyable?

Then be sure to include living potted plants—both flowering and foliage—in your decorative planning, suggests the Society of American Florists.

They will brighten empty corners and spaces, add interest to end tables, enhance a picture, bay and even small-paneled windows.

"Conversational" lush green foliage plants, large or small, which are distinctive and eye-catching because of their size, shape, color, or texture of leaves, may be used as the focal point around which an entire room setting can be designed. Even the smallest of green plants, a dish garden or a terrarium, will add touches that will transform empty space into nooks of beauty.

Foliage plants blend naturally into any decorative scheme. They are extremely popular not only because of their decorative versatility but because, being portable, they can be moved to new locations in the home.

Young trees, shrubs and woody vines need pruning to encourage them to grow into their most desirable form. Trees, especially fruit trees, are often pruned to have an open center and evenly spaced branches that will develop into a well-shaped "crown".

Under the recent amended Self-employed Individual Tax Retirement Act you may obtain special Federal Income tax treatment. Call me today for complete information.

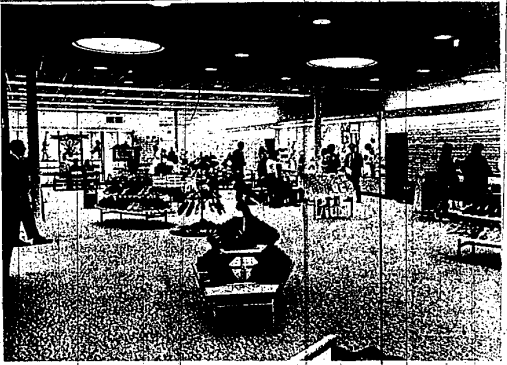
WOODMAN ACCIDENT AND LIFE COMPANY
FARM BUREAU AGENCY
Insurance Office
rewarding career. Call today!

Special Tax Treatment!

DONALD W. SMITH
District Manager
453-4901 or 427-5871
1005 W. Ann Arbor Trail
Huntingtown, Md.

Under the recent amended Self-employed Individual Tax Retirement Act you may obtain special Federal Income tax treatment. Call me today for complete information.

WOODMAN ACCIDENT AND LIFE COMPANY
FARM BUREAU AGENCY
Insurance Office
rewarding career. Call today!



KINNEY SHOES OPENED the doors to a plush new Wonderland Center store last week to become the largest family shoe center in Livonia. The store, expanded to 8,500 square feet, is the largest single-story unit in the 700-store Kinney chain.

Grass Seed Available Now For Every Lawn

"Never has there been finer lawns in wider choice, especially for the home lawn," says Dr. Robert W. Schery, Director of the Lawn Institute. "Seedsmen have developed exquisite varieties for all conceivable lawn conditions," he added, pointing out that:

"There is lawns seed for shade and for sun, for wet and for dry, for unattended turf and pampered turf, for low mowing and high.

"Not only does the seed come with an impressive hereditary pedigree, but it is clean and sprouts well. For every climate and each situation, seedsmen blend differing varieties in proper proportion to assure an attractive lawn."

The American Seed Trade Association calls attention to a new type of labeling, which classifies the elegant turfgrasses in an upper group termed "fine-textured".

A HOMEOWNER, even if totally inexperienced with lawns, can tell from the seed packet's label whether he is planting a lawn of attractively fine-textured species or "coarse-kind" haygrasses. Fine-textured grasses include the Kentucky bluegrasses, the fine or red fescues, the bent grasses, bermudagrass and a few less frequently seen species.

There are probably more new varieties of Kentucky bluegrass under test than any other fine-textured turfgrasses. Many are not yet in adequate seed supply. Available are Kenblue, a natural bluegrass from Kentucky (other seed comes from South Dakota), and mixed populations such as Arboretum, Cougar and Park.

Selected strains include Camperus, Bella, Flying, Merion, Newport, Prato, Primo, Windsor and others. Merion has long been the Cadillac seed variety and is being joined this year by Sorco and low-growing Flying. All bluegrasses are renowned for their sturdy, recuperative sod, spreading as they do by underground stems called rhizomes.

THE FINE FESCUES are excellent companions for bluegrass in seed blends and are selected strains include Camperus, Bella, Flying, Merion, Newport, Prato, Primo, Windsor and others. Merion has long been the Cadillac seed variety and is being joined this year by Sorco and low-growing Flying. All bluegrasses are renowned for their sturdy, recuperative sod, spreading as they do by underground stems called rhizomes.

Need accents that will beautify and bring vitality and distinction to the rooms of your home and make your family's everyday living more enjoyable?

Then be sure to include living potted plants—both flowering and foliage—in your decorative planning, suggests the Society of American Florists.

They will brighten empty corners and spaces, add interest to end tables, enhance a picture, bay and even small-paneled windows.

"Conversational" lush green foliage plants, large or small, which are distinctive and eye-catching because of their size, shape, color, or texture of leaves, may be used as the focal point around which an entire room setting can be designed. Even the smallest of green plants, a dish garden or a terrarium, will add touches that will transform empty space into nooks of beauty.

Foliage plants blend naturally into any decorative scheme. They are extremely popular not only because of their decorative versatility but because, being portable, they can be moved to new locations in the home.

GRAND OPENING
Ozite King of Michigan

We install linoleum and kitchen carpets immediately.

CERAMIC TILE, 5¢ each AMERICAN MADE

VINYL ASBESTOS 5.60 Box 7¢ EA.

MOZAIC TILE 1" ON 12x12 SH. DAMAGED 29¢

ARMSTRONG VINYL 39¢ 12x12 29¢

9300 TELEGRAPH AT W. CHICAGO 255-0075

How Beautification Pays Big Dividends

"Home beautification" is the Society of American Florists' most natural and self-rewarding way for homeowners and homeowners to make a positive contribution to local and national efforts to make America more beautiful," says Wallace R. Pierson, Jr., president of the Society of American Florists.

By beautifying their homes individual citizens will be bringing beauty into their everyday living, enhancing the attractiveness and value of their homes; making their neighborhood a more beautiful place.

NOAH'S ARK
THIS WEEK'S SPECIAL

Red Velvet Swords . . . 49¢
Sun Set Pillows . . . 3 for 59¢
Brick Swords . . . 3 for 79¢
Black Swords . . . 3 for 79¢

Extra Special
Dynaflow Filter #400 . . . \$10.59
Miracle Freeze-Dried tubifex worms 110 gms. 56.95
Bulk Charcoal . . . 50¢ lb.

Daily 12-9
Sat. 10-9
Sun. 12-6

SPECIAL . . . \$10.95
10 Gal. Set-Up
Includes - Tank, Pump, Charcoal, Glass, Wool, Outside Filter, Colored Gravel, Heater, Tubing and Hanging Therm.

NOAH'S ARK 5 Blocks W. of Telegraph LO 2-7603

See our fantastic collection of
WHITEHALL
Weather Vanes
and ornamental items

Remember, America has everything
including:

- Scotts, Greenfield lawn care items
- Complete patio supply selection
- Nail Kegs and Railroad ties
- Largest selection of Fireplaces and accessories in Michigan

American
HARDWARE AND SUPPLY Co.

31245 W. Eight Mile
at Marjman

Ph. 476-6240, 537-2645
Open Mon. - Wed., 8-6
Thurs. - Fri., 8-9
Sat. 8-5:30, Sun. 10-4

WEATHER-ALL GARAGE
FREE ESTIMATE

BIG 2 CAR GARAGE \$880
INCLUDES CRANE AND

• GARAGES • PORCHES • PORCH ENCLOSURES.
• ROOM ADDITIONS • CONCRETE WORK
• GARAGE DOORS • ENLARGEMENT
• BUILDING VIOLATION CORRECTIONS

• Custom construction . . . production prices
• 100% guarantee on materials and workmanship.
• High customer recommendation
• Free estimates
• No money down
• Notarized release of lien

GRISSELL GARAGE BUILDERS
25111 W. 7 Mile . . . 1 Block West of Grand River

Phone 474-0757
23601 Allen - St. Clair Shores

Mr. Dress Up
Wall With Mouldings

Large wall areas in a room usually pose a decorating problem. One inexpensive way to add interest to a wall is to apply standard wood mouldings in rectangular forms directly to the wall surface.

Mouldings may be painted the same color as walls or in contrasting colors. Wallpaper may be applied only in the areas inside the molding rectangles, or only outside, for an interesting decorative effect.

Wood mouldings are available in a variety of shapes and sizes at any lumber yard. They're easy to cut, and apply with glue and small finishing nails.

Bottled in the U.S.A. to save you money on taxes and freight

NOW \$4.98
FIFTH (INCLUDES ALL TAXES)

Royal Canadian
THE IMPORTED CANADIAN WHISKY
WITH THE ROYAL TASTE

Blended Canadian Whisky—50 Proof—Imported by Jas. Barclay Importers, Detroit, Michigan

Royal Canadian
IMPORTED
BLENDED CANADIAN WHISKY