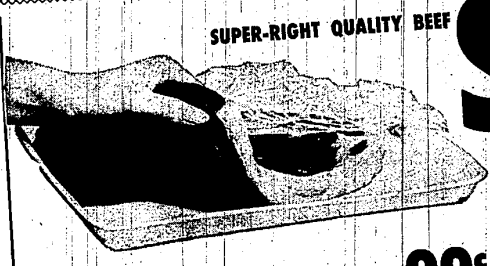


**U.S. INSPECTED AND PASSED BY DEPARTMENT OF AGRICULTURE EST. 419D**

**A&P Maintains A Federally Inspected Meat Plant in Detroit**

Another example of how A&P Cares about you is the fact that A&P is the only retail merchant maintaining a Federally Inspected Meat Plant operation in Detroit. More than that, A&P puts its pre-packaged meats best side down. The side you don't see is guaranteed to be equal to or better than the side you can see.



**SUPER-RIGHT QUALITY BEEF**

# STEAKS

**ROUND** **89<sup>c</sup>** lb  
**SIRLOIN** **99<sup>c</sup>** lb

BONELESS BEEF  
**Rump Roast** ..... lb **99<sup>c</sup>**  
**Boneless Strip Steak** ..... lb **1<sup>99</sup>**  
**T-Bone Steaks** .. lb **1<sup>15</sup>**  
**Porterhouse** ... lb **1<sup>19</sup>**

Prices Effective through Sunday, April 21st in Wayne, Macomb, Oakland and Washtenaw Counties

## CHECK THESE Econo PRICES!

**ROSE CROIX - CUT**

# Asparagus

**14 1/2 - OZ CAN** **29<sup>c</sup>**



**A&P Econo Price**

**Stouffer's Frozen Food**

**Tuna Noodle CASSEROLE** 11 1/2 - OZ. **59<sup>c</sup>**  
**Macaroni & Beef CASSEROLE** 11 1/2 - OZ. **69<sup>c</sup>**  
**Escalloped CHICKEN & NOODLE CASSEROLE** 11 1/2 - OZ. **89<sup>c</sup>**

**FROZEN-NABISCO EASY BAKE**  
**Choc. Chip Cookies** 1 - LB. PKG. **49<sup>c</sup>**  
**Pizza WITH PEPPERONI** 13 1/2 - OZ. PKG. **69<sup>c</sup>**  
**12: OFF LABEL NIAGARA**  
**Spray Starch** 1 - LB. 6 - OZ. SIZE **59<sup>c</sup>**

**ISLAND SUN**  
**Pineapple** .... 4 1 - LB. 4 - OZ. CANS **99<sup>c</sup>**

**MEDDO-LAND FREESTONE**  
**Peaches** ..... 1 - LB. 13 - OZ. CAN **33<sup>c</sup>**

**VELVET**  
**Peanut Butter** .... 2 - LB. JAR **69<sup>c</sup>**

**B&M**  
**Baked Beans** .... 1 - LB. 2 - OZ. JAR **29<sup>c</sup>**

**CARNATION**  
**Coffee Mate** ..... 1 - LB. 2 - OZ. JAR **99<sup>c</sup>**

**BREAKFAST DRINK**  
**Instant Tang** ..... 1 - LB. 2 - OZ. JAR **77<sup>c</sup>**

- |                                                                                                  |                                                                                           |
|--------------------------------------------------------------------------------------------------|-------------------------------------------------------------------------------------------|
| <b>O&amp;C</b><br><b>Shoestring Potatoes</b> .. 7 - OZ. CAN <b>27<sup>c</sup></b>                | <b>OPEN PIT-4: OFF LABEL</b> 1 - LB. 2 - OZ. JAR <b>33<sup>c</sup></b>                    |
| <b>SILVER FLOSS</b><br><b>Sauerkraut</b> ..... 1 - LB. 11 - OZ. CAN <b>26<sup>c</sup></b>        | <b>BETTY CROCKER MONTE BELLO</b> 7 1/2 - OZ. PKG. <b>47<sup>c</sup></b>                   |
| <b>NABISCO SPOON SIZE</b><br><b>Shredded Wheat</b> .. 1 - LB. 2 - OZ. PKG. <b>39<sup>c</sup></b> | <b>BETTY CROCKER</b><br><b>Noodles Stroganoff</b> 5 1/2 - OZ. PKG. <b>47<sup>c</sup></b>  |
| <b>DOG FOOD</b><br><b>Flavor Snacks</b> .... 1 - LB. PKG. <b>29<sup>c</sup></b>                  | <b>BRANDYWINE</b><br><b>Mushrooms FANCY SLICED</b> 4 1/2 - OZ. SLE. <b>39<sup>c</sup></b> |
| <b>FOR SCOURING</b><br><b>Chore Girl</b> ..... PKG. OF 3 <b>25<sup>c</sup></b>                   | <b>DEE-LISH FRESH</b><br><b>Polish Dills</b> ..... 1 1/2 - QT. JAR <b>59<sup>c</sup></b>  |
| <b>POT CLEANER</b><br><b>Golden Fleece</b> .... PKG. OF 3 <b>23<sup>c</sup></b>                  | <b>SOLID WHITE</b><br><b>Empress Tuna</b> .... 7 - OZ. CAN <b>37<sup>c</sup></b>          |
| <b>WHITE CLOUD ASSORTED</b><br><b>Toilet Tissue</b> ... 2 ROLL PACK <b>24<sup>c</sup></b>        | <b>FOIL WRAPPED</b><br><b>Red Star Yeast</b> 3 1/2 - OZ. PKGS. <b>19<sup>c</sup></b>      |
| <b>PAIN RELIEF</b><br><b>Cope Tablets</b> ..... BTL. OF 36 <b>77<sup>c</sup></b>                 | <b>ALL PURPOSE</b><br><b>Gold Medal Flour</b> 10 - LB. BAG <b>97<sup>c</sup></b>          |
| <b>VICKS</b><br><b>Vaporub</b> SMALL SIZE ..... 1 1/2 - OZ. SIZE <b>49<sup>c</sup></b>           | <b>SUNSHINE</b><br><b>Grahams</b> ..... 1 - LB. PKG. <b>38<sup>c</sup></b>                |
| <b>VICKS</b><br><b>Sinax Nasal Spray</b> 15 CC BTL. <b>89<sup>c</sup></b>                        | <b>NABISCO CHEESE</b><br><b>Tid-bits</b> ..... 7 1/2 - OZ. PKG. <b>33<sup>c</sup></b>     |
| <b>VICKS (COUGH SYRUP)</b><br><b>Formula 44</b> ..... 3 1/2 - OZ. BTL. <b>79<sup>c</sup></b>     | <b>KRAFT PHILADELPHIA</b><br><b>Cream Cheese</b> .... 8 - OZ. PKG. <b>32<sup>c</sup></b>  |

**ALCOA WRAP**

# ALUMINUM FOIL

**25<sup>c</sup>** 12 IN. x 25 FT. ROLL

**A&P Econo Price**

**A&P Econo Price**

**LIQUID DIET FOOD**

# SEGO

**25<sup>c</sup>** 10 - OZ. CAN



## Apple Pie

**39<sup>c</sup>**

**JANE PARKER PLAIN OR CUSTARD FLAVORED** 1 - LB. 1 - OZ. RING **39<sup>c</sup>**

**ANGEL FOOD CAKE** ..... 1 - LB. 8 - OZ. SIZE **39<sup>c</sup>**

**JANE PARKER**  
**Glazed Donuts** ..... PKG. OF 12 **39<sup>c</sup>**

**JANE PARKER THIN SLICED**  
**Sandwich Bread** ..... 4 1 1/2 - LB. LOAVES **89<sup>c</sup>**



## Bananas

**15<sup>c</sup>** lb

**KRAFT CRACKER BARREL**

**MELLOW CHEESE** 10 - OZ. BAR **59<sup>c</sup>**  
**SHARP CHEESE** 10 - OZ. BAR **65<sup>c</sup>**  
**Extra Sharp CHEESE** 10 - OZ. BAR **69<sup>c</sup>**

**Variety Pack** CRACKER BARREL 5 2 - OZ. STICKS **69<sup>c</sup>**  
**Sharp Cheese** CRACKER BARREL 5 2 - OZ. STICKS **69<sup>c</sup>**  
**Extra Sharp** CRACKER BARREL 5 2 - OZ. STICKS **79<sup>c</sup>**

**STOKELY'S FINEST**

**Whole Green Beans** 15 1/2 - OZ. CAN **29<sup>c</sup>**  
**Shellie Beans** ..... 1 - LB. CAN **24<sup>c</sup>**  
**Cut Wax Beans** ..... 15 1/2 - OZ. CAN **25<sup>c</sup>**  
**Golden Cream Corn** 1 - LB. 10 - OZ. CAN **22<sup>c</sup>**  
**Whole Kernel Corn** 1 - LB. 10 - OZ. CAN **22<sup>c</sup>**  
**Honey Pod Peas** ..... 1 - LB. 10 - OZ. CAN **21<sup>c</sup>**