

**Engelstolz Boarding Kennels**  
MODERN UP-TO-DATE KENNELS

ALL BREEDS  
28011 ROLLCREST  
Off 12 Mile - Between Middlebelt and Orchard Lake Road  
MEAT FEEDING TWICE A DAY  
DOBERMANS AT STUD  
Phone Mayfair 6-2872  
MIKE and HELEN BELLO

**NEW HUDSON INN**

BEER — WINES — CHOICE LIQUORS

COLD BEER TO TAKE OUT

SYL LESPERANCE, Owner

New Hudson, Michigan

**BE PREPARED****DOUBLE CHECK**

Your Door and Window Screens

GALVANIZED  
Wire Screen . . . 7 1/2 c sq. ft.  
1" x 2"  
Clear W. Fine . . . 8 1/2 c lin. ft.  
Screen Molding . . . 2 c lin. ft.  
CORRUGATE  
Fasteners . . . . . 22 c box  
Tacks . . . . . 6 c box

**COMBINATION DOORS**

Our convenient combination screen - storm doors are expertly made of top quality materials and at economical prices.

2/6 x 6/8 x 1 1/2

\$17.95

3/0 x 6/8 x 1 1/2

\$19.25

2/8 x 6/8 x 1 1/2

\$18.95

3/0 x 7/0 x 1 1/2

\$19.50

**FARMINGTON LUMBER & COAL CO.**

32800 Grand River

Phone 0020

Superior  
in every way

AUTOMATIC

**ELECTRIC WATER HEATERS****SUPERIOR** No other heater is so efficient . . . you get a full tank of piping hot water day in, day out for years on end.**SUPERIOR** No other heater is so easy on your budget . . . heats while you sleep—on special low water heater rates.**SUPERIOR** No other heater is so convenient . . . everything about it is automatic . . . nothing for you to do. Just install and forget it. Clean . . . no soot, no smoke, no chimney connections.**SUPERIOR** No other heater is so completely trouble-free . . . no flames, no fumes, lasts years longer . . . once it's installed, you get really hot water year in, year out. For complete satisfaction, go electric.**FINEST WATER HEATER YOU CAN BUY!****SEE YOUR DEALER or Detroit Edison****FARM NEWS****Alfalfa Valuable In Crop Rotation**

Grass hay programs throughout Michigan during June will demonstrate to farmers the production and utilization of legumes and grasses in good farming programs.

E. D. Longenecker, extension soils specialist at Michigan State College, says demonstrations have been set up at each of the six host farms by MSC agricultural specialists, cooperating with county agricultural agents.

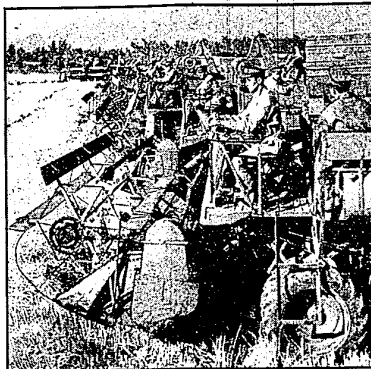
Longenecker believes that a good balance of hay and pasture in the farm cropping program is essential to protect the soil. Tests conducted by the college show the use of legumes in crop rotations not only conserves and builds up the soil, but pays big returns over a five-year period.

Experiments on the Lee Farden farm in Saginaw County show that rotations with alfalfa included in two years of a five-year rotation were most profitable. A one-year use of alfalfa grosses \$21.50 less per acre over the five-year period. When no legume or grass was used, the income was \$50 less per acre than when two years of alfalfa were included in the five-year rotation. Specialists from Michigan State College and cooperating agencies will be on hand to explain the exhibits and to discuss individual problems with visiting farmers. Machinery demonstrations will be conducted during the afternoon sessions of the all-day events.

SELL IT WITH A CLASSIFIED

**Saturday Nights****CECIL BROWN and the NEWS**

CKLW—7:55 p.m.

Brought To You by  
STATE FARM MUTUAL  
AUTOMOBILE INSURANCE  
COMPANYLocal Agency  
33636 Grand River  
(U. S. 16)  
FarmingtonPhone 0757  
MAURICE J. BROWN**"SWORDS INTO PLOWSHARES"**—In a plan to mechanize her agriculture, Chile is training more than 300 soldiers in the use of modern U. S. farm machinery. Some of the "farmers-in-uniform" are shown above manning 15 combines during a harvest of rye near Santiago.**Cattle Bloat Is Spring Danger**

Springtime is cattle bloat time. George Parsons, extension dairyman at Michigan State College, cautions that death of the animal sometimes results from severe bloat dangers. Bloat is a condition in which the rumen of the sow becomes swollen by accumulation of gases. It is common in cattle and sheep and occasionally affects horses.

Bloat is not due to special gas formation by feed materials, but to the failure of the gasses to be released at normal rates.

Parsons points out that feeds usually responsible for bloat are alfalfa, the clovers, peas, beans, as well as grass, cabbage leaves, and beet tops. When these feeds are wet as a result of frost, dew, or rain, they present even greater bloat dangers.

Symptoms of bloat are easily recognized. The first sign is a great swelling of the upper left side of the abdomen of the animal, giving a lopsided appearance. The animal becomes uneasy, the breathing rate increases and becomes short and jerky.

A veterinarian or person skilled in the treatment of bloat should be called to give relief. If the bloat is not reduced, the animal may first stagger, then fall, and finally die of suffocation. The gas pressure becomes great enough to prevent lung action.

Prevention is the first line of defense in the control of bloat in cattle, Parsons says. Gradually change the herd from the accustomed dry roughage to the succulent green feeds. Give the animals a feed of their usual dry material before turning them into unaccustomed pasture.

Animals should be watched closely for the first few days when turned into new grazing areas.

**Garden Tools Require Care**

With gardening season in full swing, Michigan State College extension specialists advise care in the use of common garden tools. Accidents frequently happen from the improper use of these implements.

Replace split or broken handles, they say. Carry cutting tools with the blade or points facing down. Pruning is much easier when you use the notch provided in the blade for cutting woody stems.

Practice care when putting tools away. When you set aside the rake, hoe, spade, or fork, leave them with tines and blades downward.

**COME'N GET IT!**

Our Supply of Quality Seeds Has Arrived. Come In Today!

- GARMO'S HYBRID MICHIGAN SEED CORN . . . . . \$11.25 per bu.  
85 - 90 - 95 Day Maturity
- JACQUES HYBRID WISCONSIN SEED CORN . . . . . \$12.00 per bu.
- PICKETT'S OPEN POLINATED SEED CORN . . . . . \$7.50 per bu.
- O & M SEED CORN . . . . . \$8.00 per bu.
- HAWKEYE CERTIFIED SOY BEAN SEED . . . . . \$5.75 per bu.

Limited Amount of FARM GRASS SEEDS Are Still Available

MILLERS OF FLOUR AND FEED FOR OVER 50 YEARS  
**FARMINGTON MILLS**  
ESTABLISHED 1905  
33408 STATE ST. Delight L. R. GILDEMEISTER, OWNER  
FARMINGTON—PHONE 6076**Clean Eggs Bring Premium At Store**

Cleanliness is one of the first things the egg buyer looks for, say Michigan State College extension poultrymen. Elimination of causes of dirty eggs will pay profits in consumer good will.

Dirty eggs are often caused by wet or muddy ranges, unclean floors in henhouse, infrequent change of litter on henhouse floors, unclean or insufficient nests, and overcrowding of hen houses. Each of these faults can be corrected.

**Four Special Schools Highlight MSC Convo**

Four special schools will highlight the annual conference of the American Society of Engineering Education at Michigan State College June 21 - July 7.

More than 2,400 engineering educators from all parts of the U. S. are expected to attend the various division schools and the national convention. The actual conference will be held June 25 - 29, but special schools will precede and follow it.

Schools to be held are engineering drawing, June 21 - 23; thermodynamics, June 25 - July 7; civil engineering, June 23 - 24; and humanistic - social, June 21 - 23.

**We Have a Complete Stock of GARDEN SUPPLIES**SEED—TOOLS—SPRAYS  
AND **Vertagreen!**

Stop In Today And Get The Quality Supplies You Need.

**Steinkopf Nursery**

Phone 0730

20815 Farmington Rd.

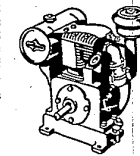
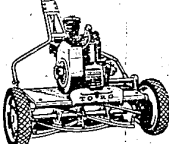
**To Owners of BRIGGS & STRATTON ENGINES**

Regardless of the kind of equipment you use powered by Briggs &amp; Stratton Gasoline Engines, we are prepared to supply original service parts, adjust or repair your engine. Save time and money—bring your engine to us at the first sign of improper operation.

- Original Parts
- Trained Mechanics
- Right Prices

**EASTERN MICHIGAN ORCHARD SUPPLY CO.**

Ph. Farm. 2883 29627 GRAND RIVER East of Middlebelt

**J. KAUFMANN CO.**8919 Fenkel Webster 3-4535 ARCH SUPPORTS.  
• ORTHOPEDIC AND SURGICAL APPLIANCES  
• SURGICAL BELTS  
• ELASTIC STOCKINGS  
• TRUSSES  
• BRACES — All Types  
• ABDOMINAL SUPPORTSNew 1951 **TORO** 21-INCH SPORTLAWN

MOWING'S A BREEZE with this smooth-running Toro on the job! Gives you a velvet-smooth cut in thick grass, on steep slopes . . . while you stroll along behind and guide it with fingertip control! Made by America's leading maker of championship golf course mowing equipment. Low cost 18-inch model, too!

- 6-blade reel, ball-bearing mounted.
- 1.6 h.p. engine for ample power.
- Blades and bed bar of Dismen tool steel.
- Simple, rugged, easy to start and operate.
- Safe, dependable . . . even a child can run it!

**Everett Implement Co.**

"Your International Harvester Dealer"

31200 Grand River at Orchard Lake Road  
Phone 1515**CLUTCH SPECIAL**Including Labor  
**\$30.00**  
'34 - '50 FORD**For FINER FORD SERVICE**See **BERLING-McHUGH Inc.****MOTOR TUNE UP****\$5.85**  
Parts Extra**Clutch Special Includes**NEW PRESSURE PLATE  
NEW CLUTCH DISC  
NEW RELEASE BEARINGS**Motor Tune-Up Includes**  
CLEAN and SPACE PLUGS  
OVERHAUL CARBURETOR  
INSPECT DISTRIBUTOR  
INSPECT FUEL PUMP**'49-'50-'51 WINDSHIELD WASHER****\$10.50**  
INSTALLED**Brake Adjustment Special Includes**ADJUST ALL BRAKE SHOES  
FILL MASTER CYLINDER  
REMOVE FRONT WHEELS  
AND INSPECT BRAKE LININGS  
ADJUST HAND BRAKE  
ROAD TEST**BRAKE ADJUSTMENT**THIS WEEK'S SPECIAL  
**\$1.98****Genuine Ford Parts Made Right Fit Right Last Longer**EXPERT  
BUMPING and PAINTING  
FREE ESTIMATES**BERLING - McHUGH, Inc.**(Formerly Smith - Berling Co.)  
FORD SALES and SERVICE

30711 Grand River Ave.

Farmington, Mich.

Phones 2690-1-2

AFTER JUNE 1 We Will Be Doing  
Business In OUR NEW BUILDING  
30711 GRAND RIVER  
3 Blocks East of Our Present Location