

NEW HUDSON INN

BEER — WINES — CHOICE LIQUORS

COLD BEER TO TAKE OUT

SYL LESPERANCE, Owner

New Hudson, Michigan

We Have a Complete Stock of
GARDEN SUPPLIESSEED—TOOLS—SPRAYS
AND **Vertagreen!**Stop In Today And Get
The Quality Supplies
You Need.

Steinkopf Nursery

Phone 0730 20815 Farmington Rd.

POULTRY POINTERS

By Your Dr. Salisbury's Dealer

Accurate egg records help
you find the weak spots in
your laying program. Keep a
daily check on your birds' egg
production. By knowing when
and why layers stop producing,
you increase the efficiency—and
profitability—of your flock.USE WORMIX REGULARLY
IN THE LAYING FLOCK
Depend on Us for
Poultry Service

POULTRY POINTERS

By Your Dr. Salisbury's Dealer

Old hens often go into a
molt this time of year. Watch
flock carefully for non-layers.
Separate them from other layers
and fatten for 7-10 days. Then sell
them promptly. You'll save feed,
reduce time and labor, and realize
profits from your non-layers.USE DR. SALSBURY'S
POULTRY MEDICATIONS
Depend on Us for
Poultry ServiceLimited Amount of FARM GRASS SEEDS
Are Still Available

Careful, Mother!

Be Sure Farm-Fresh Milk is Safe—Use an Electric Home Pasteurizer

Easily, economically and right in your own kitchen, you can provide your family with all the healthful benefits of fresh milk—without running the risk of disease. Simply pour raw milk into an automatic home pasteurizer and flip the switch. Electricity does the rest; shuts off automatically when pasteurization is complete.

Why take chances with undulant fever and other diseases? Even if cows are tuberculosis-free and tested for Bang's Disease, raw milk can still menace your family's health. See an electric home pasteurizer at your appliance dealer's today.

Detroit Edison

FARM NEWS

Insect Control
Important Job

Pest control may be one of the factors that determines whether Michigan farmers can meet the demand for additional food and fiber for national defense this year. Ray Hutson, head of the department of entomology at Michigan State College, points out that defense demands are for many of the same chemicals used in making insecticides.

"It could be a story like that for the want of a nail, a battle was lost if adequate chlorine, benzene, alcohol and sulphur are not available for making insect control items," the entomologist warned.

The MSC authority points out that toxaphene, BHC, lindane and chlorthane, among some of the leading insecticides, must be made from chlorine and benzene. DDT and methoxychlor require alcohol as well as benzene and chlorine for their manufacture.

Manufacturers and suppliers, Hutson reports, have stocked themselves for normal needs this year. But local outbreaks of bugs could force heavy demands and necessitate substitutions. The entomologist says Michigan suppliers of insecticides have planned to handle the needs within the state and substitutions have been stocked for many items expected to be in short supply.

Hutson advises farmers, fruit growers and truck gardeners to keep an adequate stock on hand and to order their needs well in advance.

Saturday
Nights
CECIL BROWN
and the
NEWS

CKLW—7:55 p.m.

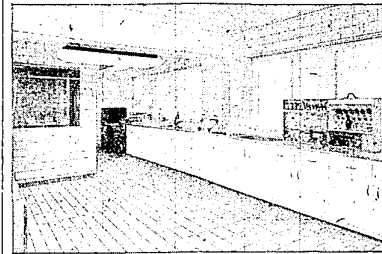
Brought To You by
STATE FARM MUTUAL
AUTOMOBILE INSURANCE
COMPANYLocal Agency
33636 Grand River
(U. S. 16)

Farmington

Phone 0757

MAURICE J. BROWN

Milk Producers Show Imlay City Plant



Partial view of the fully equipped laboratory.

The Michigan Milk Producers Association will hold open house at its new Imlay City manufacturing plant and receiving station on Saturday and Sunday, June 9 and 10, from 10 a.m. to 4 p.m. each day. Opportunity will be afforded to the 10,000 farmer members of the organization who supply the Detroit milk market as well as their friends and the public to inspect the most modern and sanitary milk plant in Michigan.

Building of the new plant, which is located on three acres of ground at the south end of Imlay City, adjoining Highway M-53, completes the post-war modernization plans

Grassland Vital
To Crop Rotation

All-out production of food, fiber and other crops cannot be maintained long if grasslands are eliminated from rotations. Richard Bell, Michigan State College farm crops extension specialist, made this comment in stressing the need for continued effort for production of more high quality grasses and legumes on Michigan farms.

"To protect the soil and, to give profitable and sustained food production, farmers must resist the urge to reduce acreages of good grasses and legumes during this period of high demand for cash crops," Bell stated. Improved grasslands will make possible greater forage production on fewer acres.

After a year or two in soil-building grasses and legumes, the crops specialist says these acres will then produce larger yields of grains and other cash crops.

Bell, who also heads the committee planning six Grass Days in the state in June, urges farmers to attend the event nearest them.

The demonstration plots, which show what good practices, fertilization, seed selection and management can do to increase forage production, will be explained at each farm. There will also be discussion of utilization of the forage crops by farm animals.

The six Michigan Grass Day programs will be held in mid-June in Calhoun, St. Clair, Saginaw, Montcalm, Manistee and Oscoda counties.

BAND SEEDING
PROVES EFFECTIVE
FOR LEGUMES

Band seeding of legumes has resulted in test stands 42 per cent better than conventional broadcast seeding, M. B. Teas, farm crops researcher at Michigan State College, reports.

Band seeding of legumes is done by dropping seeds in a band on top of the ground, directly above the fertilizer which is placed about one and one-half inches deep with the small grain. A regular grain drill specially fitted with short lengths of garden hose, to place the legume seed on top of the ground, is used.

Radio-active phosphorus, used in the plant science greenhouses at the Michigan Agricultural Experiment Station, supported field results which showed band seeding to be superior to conventional broadcast seeding.

Only those alfalfa seedlings which were within one inch left or right of a phosphorus fertilizer band received much stimulation from phosphorus fertilizer during the first month of growth.

Seedlings two or more inches away horizontally from the fertilizer band required two months to get much stimulation from phosphorus.

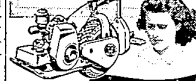
These field and greenhouse tests, Teas says, indicate that band seeding enables a legume to get the early starter benefits of the phosphorus fertilizer applied with the seedling.

The increased stands due to band seeding indicate that it may prove a better seeding method. Use of the method may be reflected in reduced rates of seeding per acre.

Network Broadcast
Opens Dairy Month

Three Michigan State College staff members inaugurated "June Dairy Month" over a nationwide radio broadcast on the National Broadcasting Company's network on Saturday, June 3.

The National Farm and Home Hour, originating from Chicago, paid tribute to the nation's dairymen and presented information on the nutritional value of dairy products. Dr. Dena Celarogist, dairy nutrition researcher in home economics, and Don L. Murray, extension dairy specialist, were interviewed by Earl C. Richardson, MSC extension editor.

FASTER, EASIER
YARD AND
GARDEN
WORK
WITH NEW

Bolens Huski Handi-Ho

Better gardening in less time is your reward for going modern with the BOLSENS HUSKI Handi-Ho. Tool control steering eliminates tugging and lifting. Makes Handi-Ho surprisingly easy to handle. Use it for mowing the lawn, working the garden or clearing snow in winter. High performance at low price.

Come in and see it . . . soon!

J. KAUFMANN CO.

8919 Fenkel
Webster 3-4535
ARCH SUPPORTS

- ORTHOPEDIC and SURGICAL APPLIANCES
- SURGICAL BELTS
- ELASTIC STOCKINGS
- TRUSSES
- BRACES — All Types
- ABDOMINAL SUPPORTS

Everett

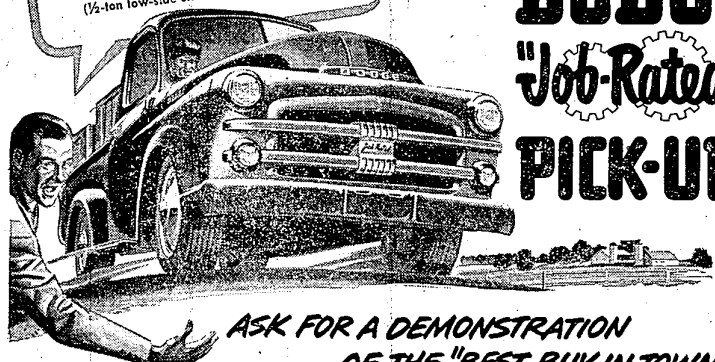
Implement Co.

"Your International Harvester Dealer"

31200 Grand River

at Orchard Lake Road

Phone 1515

BETTER PERFORMANCE, BETTER PRICE
"YOUR BEST BUY IS HERE"Only \$370.00 down
\$53.33 per month
(1/2-ton low-side standard pick-up illustrated)ASK FOR A DEMONSTRATION
OF THE "BEST BUY IN TOWN!"

More load space

Big, rugged high-side body, available on Dodge "Job-Rated" 1/2-ton pick-up, has 44.16 cu.-ft. capacity to top of tailgate—biggest load space of any popular truck of comparable wheelbase. Roomy 3/4-ton and 1-ton pick-ups have extra capacity, too.

Biggest seat and windshield

There's plenty of room for three husky men in the comfortable chair-height seat—widest of any popular truck. You get the biggest windshield of any popular truck, too—more than 900 square inches for extra-safe visibility. Dual windshield wipers are standard.

All these extra values, too!

No other pick-up offers you all these proved features! Big 97-horsepower engine! Onflow shock absorbers for unequalled riding smoothness! Lightweight, 4-rod pistons with top ring chrome-plated for economy and long life! Fully controlled hydraulic brakes with Cyclobond "no-rust" brake linings and independent hand brake! Moistureproof ignition for all-weather dependability!

Once you see . . . ride in . . . and drive this great money-saving 1/2-ton pick-up you'll know why owners all over town say they never expected "so much truck for so little money." And with our special credit terms, it's so easy to buy!

You can also get a 3/4- or 1-ton Dodge "Job-Rated" pick-up with high-side or low-side body on equally easy terms.

On all Dodge "Job-Rated" pick-ups you get increased power . . . higher 7.0 to 1 compression ratio . . . easier handling . . . extra-wide running boards for safe, sure footing . . . all-steel body with load-protecting hardwood floor.

Best of all, the price is so much lower than you'd expect! Buy now and take advantage of low first cost . . . long, easy terms. See us today!

The Only Pick-up Trucks With

99% FLUID DRIVE!

Nothing else like it! Fluid Drive—available on 1/2, 3/4, and 1-ton models—makes driving easier, increases truck life. This proved fluid coupling between engine and clutch makes starts smoother, protects your load.

Come in today for a good deal on

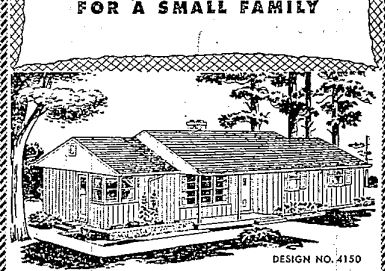
A TRUCK THAT FITS YOUR JOB... A DODGE "Job-Rated" TRUCK.

HOWARD OTIS - 33015 Grand River Ave.

Phone 0001

FARMINGTON, MICHIGAN

Phone 0909

Ranch-type Rambler
FOR A SMALL FAMILY

DESIGNED for a lot of medium size, this sturdy ranch-type rambler assures pleasant, casual living for a two-bedroom family.

The long living room is a delightful room—extending across the full depth of the house with "walls" of welcome windows at the front and rear. The homey fireplace is set against a wall of rich wood paneling. The full, open basement invites you to create the kind of amusement room you have always wanted.

Come in. See this home in full color. Study the floor plan. At the same time, see all the other modern homes in our 4-Square Home Building Service. Each is architect-designed. Each offers great home value. Blueprints are available for all designs. Acquaint yourself with this helpful home planning service.

FARMINGTON
LUMBER & COAL CO.

32800 Grand River

Phone 0020