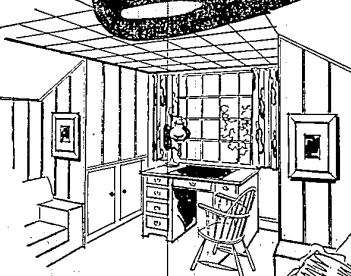


## Engelstolz Boarding Kennels

MODERN UP-TO-DATE KENNELS

ALL BREEDS  
28011 ROLLCREST  
Off 12 Mile - Between Middlebelt and Orchard Lake Road  
MEAT FEEDING TWICE A DAY  
DOBERMANS AT STUD  
Phone Mayfair 6-2872  
MIKE and HELEN BELLO

**NOW!** an easy, low-cost way to build  
**NEW ROOMS from WASTE SPACE**



## CELOTEX

INSULATING INTERIOR FINISHES

Now you can easily transform wasted attic space into an attractive bedroom... or an extra room of any sort! You'll be surprised to find that it can be done at extremely low cost with Celotex Insulating Interior Finishes! And though it is near the roof, your room will still be comfortable, because Celotex Insulating Interior Finishes build... decorate and insulate! Available in a wide range of exciting colors. See them for yourself. Stop in today!

NO EXPOSED NAILHEADS.  
Famous Celotex "E" joint on Ties Board and Finish Plank Miter nailheads and interlocks panels securely—neatly. Walls and ceilings will retain their beauty and finish for years!

## FARMINGTON LUMBER & COAL CO.

32800 Grand River

Phone 0020

## WATROUS COOKING SUITS TO A TEE

**Watrous has the range - it's ELECTRIC!**

"I wouldn't take anything in the world for my electric range," says charming Mrs. Al Watrous. "Many of my friends feel the same way about theirs, too."

"And can she cook with it!" adds Al. "Everything tastes better and she spends about half as much time in the kitchen."

"That's because I'm not forever pot-watching," explains Mrs. Watrous. "Electric cooking gives you a chance

to relax. You just set the controls and after awhile, there's your meal... all hot and cooked to perfection. And electric cooking is so much cleaner, too," but, honestly, there's just no end to the advantages of an electric range."

You'll echo the words of this attractive housewife and her famous husband the moment you try this modern, efficient way of cooking. So don't delay. Visit your dealer and select your electric range—tomorrow!



**AL'S "ACE"**  
**POTATOES AND EGGS IN CHEESE SAUCE**  
4-5 cooked potatoes, sliced 1/2 cups cream sauce  
4 hard-boiled eggs 1/2 cup grated sharp cheese  
2 tbsp. chopped parsley 1/4 cup fine bread crumbs  
2 tsp. grated onion 2 tsp. butter  
Salt and pepper  
Arrange layers of potatoes, sliced eggs, pineapple and onion in greased baking dish. Season with salt and pepper. Add cheese to hot cream sauce and egg combination, until smoothly pour over potato and egg combination. Lightly brown bread crumbs in butter on Medium heat and sprinkle over other ingredients. Bake 25 minutes at 350 degrees. Serves 4.

Come in and see  
**THE "RANGE" OF THE STARS**  
...of course, it's ELECTRIC!

**SEE YOUR DEALER or Detroit Edison**



## FARM NEWS

### Spoiled Hay Valuable Source Of Mulch

Untimely rains that have spoiled a lot of hay this summer on Michigan farms may have "blown some one good" by providing orchardists with valuable mulching material.

Dr. H. B. Tukey, head of the Michigan State College horticulture department, reports that more and more orchardists are turning to some form of mulching because their experience with it has been good.

"Mulch is better than we know," says Dr. Tukey. "We explain that it adds organic matter, improves the physical condition of the soil, prevents run-off, and makes nutrients available."

"While this is a storable package of virtues, there are seemingly still some little understood values. Somehow, many troubles that assail an orchard disappear under a good mulching program," he concludes.

In mulching, hay, straw, marsh grass, sawdust, or any other similar material is brought into the orchard and spread under the trees. The most common procedure is to spread the mulch well out under the drip of the branches and to leave the spaces between the trees in soil, which is kept mowed.

Horticulturists advise that now is the time to get mulch. Some of the hay which has been made unfit for storage by the rains may fit well in the mulching program.

Mulching, the horticulturists advise, may conflict with other orchard operations, but it is worth a little extra effort.

### Saturday Nights CECIL BROWN and the NEWS

CKLW 7:55 p.m.

Brought To You by STATE FARM MUTUAL AUTOMOBILE INSURANCE COMPANY

Local Agency  
33636 Grand River  
(U. S. 16)  
Farmington  
Phone 0757  
MAURICE J. BROWN

### Apple Maggot Control Methods Cited In Bulletin By Agent Bailey

The flies of apple maggot were observed in Oakland County on July 4. Egg-laying begins 7 to 10 days after their emergence from the ground. Piles continue to emerge from the ground until early August and the first spray should have been applied by July 15.

The apple maggot is a black-bodied fly slightly smaller than the housefly. The female is larger than the male, and has four white bands across the abdomen, while the male has only three. Flies may be caught for examination by lowering a mason jar over them as they rest on a leaf.

The female deposits her eggs singly in the flesh of the apple. Late variety apples become much dimpled and pitted as a result. A large number of eggs may be laid in a single fruit, resulting in many maggots tunnelling through the flesh of the apple. Badly infested fruit may fall to the ground.

Apple maggot orchards fall in two classes, "the haves" and the "have nots." A good July and August spray program for the control of codling moth, redbanded leaf roller and mites, with proper timing, should keep maggots out of the "have not" orchards.

For the "haves" — All apple trees, wild crab apple and nearby untended orchards should be carefully sprayed. Drops in heavily infested orchards should, if possible, be picked up and destroyed. Have neglected orchards or trees cut down or removed. The most effective spray is 3 pounds of lead arsenate, 1 pound of zinc sulfate, 4 pounds of fresh spray lime and enough water to make a 100 gallon mixture.

Ferbam may be substituted for the zinc sulfate and lime and will probably serve as an adequate substitute when used at the four-to-five pound to 100 gallons. Use Ferbam if scab is a problem.

A second and third application at intervals of 10 days to two weeks should be followed. For late varieties, a fourth application may be necessary in badly infested orchards, but heavy residues should be avoided.

DVT is not as effective as lead arsenate for apple maggot control, but may be used at shorter intervals in later sprays to avoid heavy residues. Permethrin is effective for about 1-day intervals.

### MUCK FARMERS' FIELD DAY SET FOR JULY 25

The annual Muck Farmers' Field Day, sponsored by the Michigan State College department of soil science, will be held Wednesday, July 25, at the MSC muck experiment farm near Bath.

A comprehensive all-day program has been planned so that muck farmers may plan to inspect all of the work in progress. A new feature this year will be luncheon service provided by a local church auxiliary.

Tours of the plots will begin at 10:00 a.m. and again after the noon program. Michigan Agricultural Experiment Station projects of special interest to farmers include: onions and sugar beets planted on muck that was plowed, cutplowed and seeded without any other soil preparation; studies in overhead irrigation; fertilizer placement on celery, onion, table beets, head lettuce, sugar beets and carrots.

Other projects deal with the effect of nitrogen on onions on tiled muck; the use of sulfur and micro-nutrient elements in the production of blueberries; rock phosphate experiments with table beets and onions; and foliar sprays and dusts for feeding plants.

Bulk storage of onions; new chemicals for weed control; new materials for onion thrip and maggot control; and sprays for prolonging the storage life of onions will also be featured. Crop trials under way include hybrid onions, celery, head lettuce, corn, soybeans, potatoes and barley.

Equipment to be shown includes a 500 foot, 12 inch well with portable pipe irrigation; fertilizer placement attachment; bulk onion storage bins, and rotary-type tillage unit.

### Campers In State Parks Must Pay Regular Fee

Solitude-loving campers who pitch tents or park trailers in remote spots of state parks and recreation areas must obtain permits and pay the regular \$60 a day camping fee, conservation department officials advise.

Electricity at campgrounds where it is available is an additional 20 cents a day. Fees for campground and other camping spots are collected in advance for the number of days the campers will be in the park.

Campers who must leave before they've used the time paid for can be credited for remaining days and spend them at any state park.

### County Holstein Cattle Show To Be Held Aug. 1

The annual Black and White Show, sponsored by the Holstein-Friesian Association, in cooperation with the Oakland County Extension Service, will be held Wednesday, August 1, at the 4-H Fairgrounds, Perry and Pontiac Roads, Pontiac. The show will start at 10:00 a.m. and last until about 4:00 in the afternoon.

Special features will be a 4-H Judging Team Contest and a Rabbit Judging Contest, in which the audience will have opportunity to participate. Prizes will include a show banner, set of plaques and set of pictures for first, second and third prizes in the 4-H Judging contest, and a model cow and bull for the Rabbit Judging.

### IT'S COARSER SWEETER

...grains coarsely ground  
...molasses added

### NEW Larro DAIRY FEED

protected by **Larromin**

**Smell it!**  
**Feel it!**  
**Taste it!**

IT'S FRESH  
Smell the rich, nutty, pungent odor... as fresh and enticing as new-mown hay.

IT'S COARSE  
Grains are ground large enough to recognize.

IT'S SWEET  
Molasses to help keep cows on feed... balance successful feeding.

**LARRO DAIRY FEED**

\*You Need Feed No Supplement Minerals, LARROMIN is General Mills' new, exclusive combination of essential base and trace minerals.

**MILLERS OF FLOUR AND FEED FOR OVER 50 YEARS**

**FARMINGTON MILLS**

ESTABLISHED 1895  
33408 STATE ST. Farmington, Mich. 48334

L. F. GILBERT, OWNER  
FARMINGTON - PHONE 0076

### TOL-E-GRO

Prepared by CITY OF TOLEDO

### Organic Fertilizer

**DOES NOT BURN**  
Spread in hot sun or cool evening, on wet ground or dry, Tol-E-Gro will not burn grass or other plant life.

- Rich in mineral and organic materials
- Promotes continuous plant growth
- Increases length and depth of roots
- Harmless to humans

**80 lbs. \$1.90**

### STEINKOPF NURSERY

Farmington and 8 Mile Roads

### UNEXPECTED COMPANY NO PROBLEM HERE



This wise housewife is prepared for such emergencies. Her International Harvester seven-cubic-foot freezer, known as Model 70, is stocked with 245 pounds of frozen foods. It has more than 17 1/2 square feet of sub-zero fast freezing surface. A steel wire basket keeps the foods she wants handiest near the top of this new kitchen-size freezer.

### EVERETT IMPLEMENT CO.

"Your International Harvester Dealer"

31200 Grand River at Orchard Lake Road Phone 1515

### Check the things you want

- ☐ Plenty of power
- ☐ Maximum safety
- ☐ Easy handling
- ☐ Bigger payloads
- ☐ Extra comfort
- ☐ *gyrol* Fluid Drive

**they're ALL yours in a**

## DODGE "Job-Rated" TRUCK!

**Plenty of power for your job.** Power has been increased up to 20% in eight great engines—94 to 154 hp. You get top economy, too—thanks to high compression ratio, 4-ring pistons with chrome-plated top ring, and many other extra values.

**Maximum safety—You get the finest truck brakes in the industry!** On many models you get new, molded, tapered, Cyclobond brake lining for smoother, quieter, safer braking. And you'll ride in a welded all-steel cab with an extra-big windshield.

**Bigger payloads—Balanced weight distribution enables you to haul bigger payloads on a Dodge "Job-Rated" truck without danger of overloading.** Because the engine has been moved forward and front axle back, the right proportion of the load is carried on each axle.

**Extra comfort—Famous "Pilot-House" cab gives you safe, all-around vision with extra-big windshield and rear quarter windows. Roomy, "chair-height" seat is widest of any popular truck. New "Orion" Shock Absorbers on 1/2-, 3/4-, and 1-ton models give smoother ride.**

**gyrol Fluid Drive—Only Dodge offers gyrol Fluid Drive. Available on 1/2-, 3/4-, and 1-ton models. You start with amazing smoothness. Gearshifting is minimized. Wear is reduced on vital parts. And Fluid Drive protects your load by minimizing damaging jolts.**

**How Dodge trucks are "Job-Rated" to fit your job**

A Dodge "Job-Rated" truck is engineered at the factory to provide the best in low-cost transportation. Every unit from engine to rear axle is "Job-Rated"—factory-engineered to support the load.

**Every load-CARRYING unit—frame, axles, springs, wheels, and tires—is engineered to provide extra strength and capacity necessary to support the load.**

**Every load-MOVING unit—engine, clutch, transmission, propeller shaft, rear axle, and others—is engineered to move the load under most severe operating conditions. A range of over 350 G.V.W. chassis models enables you to select a truck that meets your conditions.**

Come in today for a good deal on a **DODGE "Job-Rated" TRUCK**... low down payment... low monthly payments

### HOWARD OTIS - 33015 Grand River Ave.

Phone 0001 FARMINGTON, MICHIGAN Phone 0909